

# THE COMPLETE XEROX CATALOG

PRODUCTS AND SERVICES FOR SMALL AND MID-SIZED BUSINESSES



## ▼ FREE COLOR PRINTER

Buy the award-winning DocuPrint N40 network laser printer and get a DocuPrint XJ6C color inkjet printer **FREE**. See page 9 for details.



VOLUME TWO  
1-800-ASK XEROX ext. BUY  
WWW.XEROX.COM

DIGITAL  
THE DOCUMENT COMPANY  
XEROX

# welcome

to a new, easy way to  
do business with Xerox.

From the latest in convenience copiers to award-winning desktop digital laser printers, Xerox offers a wide range of affordable products and services for business. You'll find a generous selection of them in this easy-to-use catalog.

Whether you're a small or midsize business, or work in a home office, you'll find new ways to print, fax, copy, scan, and connect with your customers, no matter where they're located. Xerox document solutions can help improve your business processes, lower your costs and save precious time.

Consider this catalog as another way to buy and to learn more about our complete solutions comprised of world-class products and services. Along with online access and our widespread network of sales representatives and resellers, you now have more choices and more convenience for doing business your way.





# why buy Xerox

Why? Because Xerox products and services in this catalog can help improve your company's business processes, lower costs, increase productivity and share crucial knowledge. We've already revolutionized the way people work by easing the flow of information from paper to digital form and back again. Now we're providing you with the power to get the office equipment you want—when, where and how you need it.

## HOW DO I ORDER?

Now, easier access to Xerox document solutions:



**BY PHONE** A customer service representative will take your order or, if you still want to consult face-to-face before purchasing, direct you to a Xerox Sales Rep in your area.

**Call 1-800-ASK-XEROX, ext. BUY**  
(1-800-275-9376, ext. 289)



**ONLINE** Visit our Web site to order online or for additional information: **www.xerox.com**.



**WORKSHEET** Before calling or ordering online, use the worksheet provided on the inside back cover. For complete terms and conditions, visit our Web site at [www.xerox.com](http://www.xerox.com).



**BY FAX** Use the worksheet in this catalog and fax it to us. We will send back a proposal.  
**Fax to 1-877-835-3979.**

## PRICING & PAYMENT

Several different purchasing and leasing options make buying Xerox products easier than ever: online, by phone or fax via this catalog, or from a Xerox authorized sales representative or authorized reseller. The worksheet provided in this catalog will help you save time as you plan your purchase. A Xerox telephone marketing representative will then help you determine the best purchasing method for your situation. Prices in this catalog are stated in U.S. dollars and do not include shipping charges, if any, and applicable taxes. Products ordered are for delivery only in the U.S. and its territories. Lease prices include service. Prices are good through December 31, 1999. For latest prices, call 1-800-ASK-XEROX, ext. BUY.

## WHEN YOU SEE THESE SYMBOLS...



Delivery and installation of products with this symbol will be fulfilled by one of Xerox' leading reseller partners, Global Direct. All other deliveries and installations will be handled by Xerox.



For your added convenience, you can order products with this symbol online or by phone. Look for the product category that lets you go right to the area you're interested in.



Many Xerox products can be customized according to your needs. Call for the latest price or a quote.

## CONTENTS

Introduction	2
Digital Copier/Printers	4
Digital Systems	5
Small/Home Office	7
Network Printers	9
Color Digital Copier/Printers	12
Traditional Copiers	14
Xerox Web Site	17
Multifunction/Fax	18
Xerox Software	20
Xerox Services	21
Supplies	22
Worksheet	23



KEEP THE CONVERSATION GOING. SHARE THE KNOWLEDGE.

To order, call **1-800-ASK-XEROX ext. BUY** or visit **www.xerox.com**





# why digital?

In a recent study, half of all companies surveyed indicated that 50 percent of their documents are digital.\* That percentage will increase as time goes on. This confirms that moving easily from digital to paper and back again is an increasingly critical function.

Fortunately, Xerox makes it simple to get connected. Our full line of networkable digital printers, copiers and document management software provides solutions that offer tremendous flexibility in how and where

work gets done. These products also deliver fully on the promise of digital technology in other ways by providing greater reliability, fewer moving parts, simpler paper paths and reduced paper handling.

When it comes to finding better ways to share the knowledge that drives their business, organizations everywhere are turning to Xerox. In fact, our share of the digital copier market is three times that of our closest competitor.

\* The Delphi Group

The reliability of personal or networked printing, plus the convenience of walk-up copying.



214 with optional Set Document Feeder, 250-Sheet Tray and Stand

**NEW** 

## 212 Digital Printer/Copier

A *Better Buys for Business* "Editor's Choice" for best-in-class price and performance.

Key Features	
Prints/Copies per Minute	12
Volume Range	Low-Mid
Reduction/Enlargement	50% - 200%
Simplex/Duplex	Simplex
Book Copying	Yes
DocFeed Type	No
Networkable	Optional
Extra Trays	No
Staple	No
AutoFinishing/Stapler	No
Pricing/Digital Copier	
Base price	<b>\$1,695.00</b>
36-Month Lease	\$61.64/month
Pricing/Digital Printer	
Base price	<b>\$2,065.00</b>
36-Month Lease	\$75.10/month
Options	
Cabinet Stand	\$245.00 or \$8.91/month
16 MB Memory Upgrade (Printer Only)	\$125.00 or \$4.55/month
Ethernet Adapter (Printer Only)	\$250.00 or \$9.06/month

**Why to buy:** Incredibly low-priced access to the power of digital in a low-volume printer/copier.

**NEW** 

## 214 Digital Printer/Copier

"Unlike other laser multifunctional machines... priced to please and offers 600 dpi resolution in both copy and print modes." *Better Buys for Business*

Key Features	
Prints/Copies per Minute	14
Volume Range	Low-Mid
Reduction/Enlargement	50% - 200%
Simplex/Duplex	Simplex
Book Copying	Yes
DocFeed Type	Optional
Networkable	Optional
Extra Trays	Optional
Staple	No
AutoFinishing/Stapler	No
Pricing/Digital Copier	
Base price	<b>\$1,930.00</b>
36-Month Lease	\$65.94/month
Pricing/Digital Printer	
Base price	<b>\$2,525.00</b>
36-Month Lease	\$78.91/month
Options	
Sheet Document Feeder	\$660.00 or \$24.00/month
Second Paper Tray	\$300.00 or \$11.94/month
Cabinet Stand	\$245.00 or \$8.91/month

**Why to buy:** At 14 ppm, a very affordable opportunity to join the digital revolution.

This symbol  next to a product means you can call for the latest price or a quote on that product.

This symbol  next to a product means that product is available for purchase or lease on our Web site, as well as by phone.





# Simplify network growth.

We live in a digital world. So it's good to know you can count on Xerox for a complete range of digital solutions. Like our Document Centre family of digital products—the biggest selling digital solutions in the United States and Europe. They raise copying and printing to a new level. Your copies or prints look better, and jobs are copied faster with scan-once/print-many technology.

These products put the remarkable productivity-building power of digital printing and copying to work. You'll have all the digital functions you want—printing, copying, scanning, even faxing. Best of all, you can access all these capabilities right from your desktop. With these features plus document management capabilities, your people have virtually no limits in the ways they can use digital and paper documents.

Ask yourself: what business can afford to have multiple office equipment, from multiple vendors, with multiple suppliers and multiple service contracts? Xerox integrates these elements in a common platform with a solution that's right for today . . . and tomorrow.

- ▲ NUMBER-ONE-SELLING DIGITAL COPIER
- ▲ WORLD-CLASS RELIABILITY
- ▲ SUPERIOR IMAGE QUALITY
- ▲ IMPROVED PRODUCTIVITY
- ▲ ENHANCED NETWORKING
- ▲ MODULAR FOR EASY UPGRADING

**NEW**



## Document Centre 340/332ST

These third-generation network document solutions are a revolution ahead of the competition. Designed specifically for today's globally connected office, Document Centre 340 and 332 print, copy, scan and fax at 40 and 32 pages per minute, respectively.

### Key Features

Print/Copy/Scan/Fax Speed	40/32 ppm black
Reduction/Enlargement	25% - 400%
Resolution (dpi)	600 x 600 print
Max. Paper Size	11" x 17"
Memory (MB)	64
Monthly Volume	200,000
Auto Duplex	Standard
Collation Type	Offset
Networkable	Optional
Standard Paper Trays	4
Automatic Document Feeder	Standard
Stapler	Optional
Configurations starting at	<b>\$11,595.00</b>

**Why to buy:** With its powerful job-processing capabilities, concurrent functions and integration of four office services into one, the Document Centre 340/332 will help everyone on your network become more productive.



340/332 with Duplex Digital Document Scanner, 4-Tray, Fax, Finisher, High-Capacity Feeder



KEEP THE CONVERSATION GOING. SHARE THE KNOWLEDGE.

To order, call **1-800-ASK-XEROX ext. BUY** or visit **www.xerox.com**

1 8 0 0 2 7 5 8 3 7 6 ext. 2 8 8



Xerox Document Centre products come in various configurations. For example: Document Centre 220ST is a multipurpose system that comes with full office network connectivity for network printing, scanning and faxing and Document Centre 220DC is a digital copier.



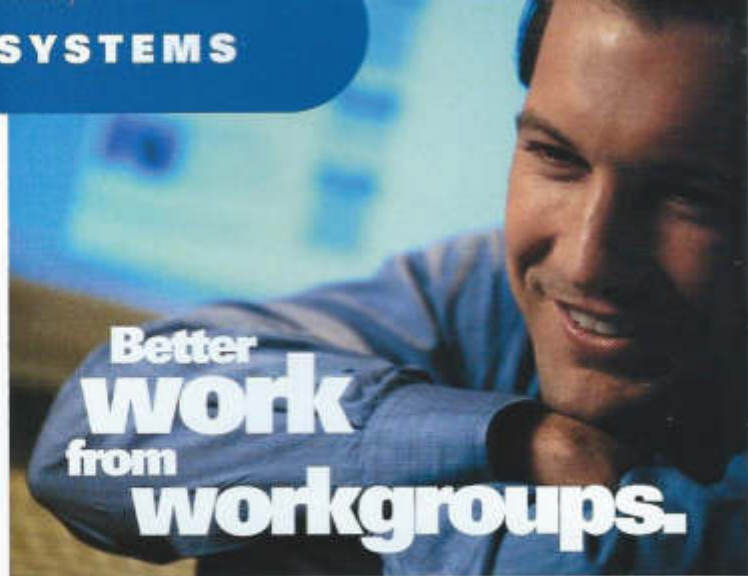
With the click of a mouse it's easy to copy, print, scan and fax.

## Document Centre 220ST/220DC

The Document Centre 220ST provides full office network connectivity for network printing, scanning and faxing. It also has an embedded Web server, so you can access, view and use the system remotely over the Internet. The 220DC version is a digital copier, which may be upgraded to a full network system as an option.

Key Features	220ST (Multipurpose)	220DC (Digital Copier)
Speed	20 ppm black	20 ppm black
Reduction/Enlargement	25% - 400%	25% - 400%
Resolution (dpi)	600 x 600 print	400 x 400
Max. Paper Size	11" x 17"	11" x 17"
Memory (MB)	Up to 128	Up to 64
Monthly Volume	150,000	150,000
Networkable	Included	Optional
Auto Duplex	Optional	Optional
Coflation Type	Offset Catch Tray	Offset
Fax module	Included	Optional
Standard Paper Trays	4	2
Stacker	Optional	Optional
<b>Pricing</b>	Base Price <b>\$12,000.00</b>	<b>C1 Model</b> (includes 2 trays, Digital Auto Document Feeder (DADF), Simplex Module, Customer Replaceable Unit (CRU)) Base Price: <b>\$7,170.00</b> 36-Mo. Lease: \$278.01  <b>C2 Model</b> (C1 plus Duplex Module) Base Price: <b>\$9,135.00</b> 36-Mo. Lease: \$349.47  <b>C3 Model</b> (C2 plus Hard Drive) Base Price: <b>\$9,760.00</b> 36-Mo. Lease: \$372.20  <b>C4 Model</b> (C3 plus Fax Module) Base Price: <b>\$10,925.00</b> 36-Mo. Lease: \$414.57 FSMA for all models \$ 72.30/month
<b>Purchase &amp; Lease Options</b>	<b>220ST (Multipurpose)</b>	<b>220DC (Digital Copier)</b>
One extra paper tray		\$500.00 or \$18.88/month
Second extra paper tray	Included	\$525.00 or \$19.00/month
Envelope tray		\$285.00 or \$9.84/month
Finisher/Stand	Included	\$1,735.00 or \$63.09/month
Finisher with High Capacity Feeder		\$2,760.00 or \$100.37/month
High Capacity Feeder	Included	\$1,095.00 or \$37.84/month
Work surface		\$75.00 or \$2.73/month
Stapler/work surface	Included	\$250.00 or \$9.09/month

**Why to buy:** The 220ST provides the most cost-effective solution for fully networked services. Modular design of the 220DC/220ST eliminates many time-consuming steps.



Today's workgroup employees spend an enormous amount of time printing, copying and faxing—an average of more than 70 pages every day! If this sounds like your office, consider equipment designed specifically for shared use to improve productivity and reduce costs. For example, the ability of Xerox Document Centre products to help manage multiple jobs and users makes them invaluable in any office.

Xerox Document Centre lets you do more in less time. You can turn any desktop into a powerful communication station—able to copy, print, scan, fax and share information with ease—across the office or around the world.

Getting better work from your workgroups has never been easier.





# Get big results from small wonders.

Xerox convenience office products may be small, but they deliver big results at modest prices. Easy ordering lets individuals and small offices enjoy the benefits of world-class document solutions. A simple phone call gets you more value for your money, with fast speeds, smooth feeds and documents ready to go in fewer steps.

These compact, efficient products are perfect for personal use in your home or small office, or for extra convenience in larger offices. Built to last, and priced to give your bottom line a break, every one comes with the Xerox Total Service Guarantee for added peace of mind.



Delivery and installation of most of the products on pages 7 to 11 will be fulfilled by a leading Xerox reseller partner, Global Direct. Years of experience in serving millions of customers has made Global Direct one of the country's foremost direct marketers of high-quality office equipment products.



■ **Digital copier/printers.**

Award-winning designs with big Xerox copier/printer performance.

■ **Laser printers.**

Fast, accurate, reliable printers with up to 1800 x 600 dpi image quality.

■ **Inkjet printers.**

Budget-minded or image-conscious, there's a Xerox inkjet right for you.

■ **Cost-effective copiers.**

An unmatched selection of affordable solutions for individuals and small business.

■ **Multifunction devices.**

Give you the power to copy, print, scan and fax from the desktop.



## WorkCentre XE80 Digital Copier/Laser Printer



Superior laser quality digital copier is also a printer in a desktop unit perfectly sized for the small home office.

**Key Features**

Prints up to	8 ppm
Copies up to	6 cpm
Resolution (dpi)	600 x 600
Paper Capacity	250 sheet
Warranty	3-year
Interfaces	Parallel (cable included)
Price	<b>\$450.00</b>

**Why to buy:** Provides monthly volume up to 750 pages. Digital advantages include stand-alone copying and Windows™ printing in one.

**NEW**



## DocuPrint P8ex Personal Laser Printer

The smart choice for increased productivity. Professional-quality output, plus high-yield laser print cartridge for fewer cartridge changes. PCL6 emulation and USB are standard.

**Key Features**

Prints up to	8 ppm
Resolution (dpi)	1200 dpi image quality, true 600 x 600 dpi resolution
Paper Capacity	150
Networkable	Optional
CentreDirect External Print Server	Optional
Warranty	1 Year
Interface	IEEE 1284 bi-directional parallel, Universal Serial Bus (USB), Windows 98
Price	<b>\$379.99</b>

**NEW**



## DocuPrint P1202 Personal Laser Printer

Lightning-fast printer means less waiting for documents. **Optional Macintosh capability.** Advanced features with PCL6 emulation, including watermark, N-up, booklet and two-sided printing.

**Key Features**

Prints up to	12 ppm
Resolution (dpi)	1200 dpi image quality, true 600 x 600 dpi resolution
Paper Capacity	250-sheet tray, 100-sheet multipurpose unit
Networkable	Optional
250-sheet tray	Optional
CentreDirect External Print Server	Optional
Warranty	1 Year
Interface	IEEE 1284 bi-directional parallel, Universal Serial Bus (USB), Windows 98
Price	<b>\$629.99</b>



KEEP THE CONVERSATION GOING. SHARE THE KNOWLEDGE.

To order, call **1-800-ASK-XEROX ext. BUY** or visit **www.xerox.com**

1 8 0 0 2 7 5 9 3 7 6 X A T 2 8 9





## Document WorkCentre XD100



"A productivity tool that helps business professionals work smarter, better and faster," said *PC Computing* magazine, which nominated the XD100 for its 1998 Most Valuable Product Award.

Key Features	
Copies up to	10 cpm
Prints up to	8 ppm
Resolution (dpi)	600 x 600
Paper Capacity	250
Printer Cable	Yes
Warranty	3 Years
Price	<b>\$550.00</b>

**Why to buy:** Everything you want in a copier, including a printer.



## Document WorkCentre 480CX Color All-in-One



All-in-one color printer designed to meet the needs of small business and home office users. Provides professional quality output right out of the box.

Key Features: Printer	
Speed	Up to 8 ppm black, 4 ppm color
Resolution (dpi)	1200 x 1200
Key Features: Fax	
Transmission speed	5 seconds per page
Resolution (dpi)	300 x 300
Key Features: Copier	
Speed	5 cpm
Resolution (dpi)	300 x 300
Warranty	1 year
Interfaces	Parallel (cable included)
Price	<b>\$449.00</b>

**Why to buy:** Prints up to 30 percent faster than most competitors. Lets you work faster by printing and faxing at the same time.



## WorkCentre 385



Get a whole officeful of performance right on top of your desk. This all-in-one unit lets you do it all—print, fax, copy and scan. Plus you can do more than one task at a time. Delivers excellent, professional-quality laser output.

Key Features: Printer	
Speed	Up to 8 ppm
Resolution (dpi)	600 x 600
Key Features: Plain Paper Fax	
Transmission Speed	5 seconds per page
Resolution (dpi)	300 x 300
One-Touch Dialing	20 one-touch, 80 speed
PC Fax	14.4 Kbps
Key Features: Personal Copier	
Speed	8 cpm
Resolution (dpi)	300 x 300
Warranty	1 Year
Price	<b>\$499.00</b>

**Why to buy:** With fast, professional-quality laser printing, copying and scanning plus fax service, you have everything you need to get your work done faster. Hands-free operation and TextBridge PRO software adds more productivity and time savings.

## WorkCentre XD105f, XD120f, XD155df Digital Copier/Laser Printer



No-compromise digital copy and laser print quality in space-saving units providing monthly volume from 1,000 to 2,000 pages.

Key Features	XD105f	XD120f	XD155df
Prints up to	8 ppm	8ppm	6ppm
Copies up to	10 cpm	12cpm	15cpm
Resolution (dpi)	600 x 600	600 x 600	600 x 600
Paper Capacity	250 sheet	500 sheet—two paper trays	500 sheet—two paper trays
Warranty	3 Year	3 year	3 year
Interface	Parallel (cable included)	Parallel (cable included)	Parallel (cable included)
Price	<b>\$699.00</b>	<b>\$1,099.00</b>	<b>\$1,299.00</b>

**Why to buy:** These digital copiers and laser printers in one offer outstanding text and photo reproduction. Separate drum and toner cartridges also optimize use of supplies.



**Although prices are subject to change, you're guaranteed to get our current best promotional price on any product in this catalog. For the latest and lowest prices call 1-800-ASK-XEROX, ext. BUY.**



**PICK YOUR  
SPEED AND  
"BUILD" THE  
PRINTER THAT'S  
JUST RIGHT  
FOR YOU.**



Every workgroup gets the same amount of time in a day. But now there's a way for workgroups to *make more of the time* they have available. Just install Xerox network printers.

Xerox network printers use exclusive Xerox WorkSet™ Technology to scan originals once and store the information in digital memory. So you can print any number of originals from the desktop, with no time wasted on scanning or standing at the printer.

This exciting new line of mid-volume network printers combines an affordable price with the best thinking of Xerox high-end printers—like industry-standard speed, built-in Web-based tools, multiple job management and more.

The award-winning DocuPrint N-Series family—the N17, N24, N32 and N40 network laser printers—brings high-end document production features to your desktop, incorporating exclusive Xerox technology and "copier-like" paper-handling features.

# Xerox Printers = Productivity.

**NEW**

## DocuPrint N40



The N40 series of network laser printers is 25% faster than the fastest HP LaserJet printer. Robust, reliable, production-level paper handling. DocuPrint N40cn and N40fn models have high-capacity feeder and duplexer. N40fn also has copier-like finishing/stapler feature. Special features include edge-to-edge printing, job offsetting, PrinterMap software, and CentreWare Internet services.

Key Features	N40	N40cn (console version)	N40fn (finisher version)
Print Speed	40 ppm	40 ppm	40 ppm
Resolution (dpi)	600 x 600	600 x 600	600 x 600
Std. Memory (Max.)	24 MB (128)	24 MB (128)	24 MB (128)
Language	PS3/PCL5e	PS3/PCL5e	PS3/PCL5e
Max. Paper Size	11" x 17"	11" x 17"	11" x 17"
Price	<b>\$2,899.99</b>	<b>\$4,195.99</b>	<b>\$5,995.99</b>
35-Month Lease	\$ 103.00/month	\$ 149.00/month	\$ 212.00/month
<b>SKU #</b>	<b>Options</b>		
113R00173	Print Cartridge (23k life)	\$ 299.00	\$ 299.00
97K24870	100-Envelope Feeder	\$ 400.00	\$ 400.00
97S02217	2.1 GB Hard Disk	\$ 520.00	\$ 520.00

**Why to buy:** Suitable for larger networked departments that need to print up to 200,000 pages per month.



The industry's first 40 ppm network printer most recently was honored as *Network Magazine's 1999 Product of the Year* in its category.

**FREE** DocuPrint XJ6C color inkjet printer with purchase of DocuPrint N40. Offer ends 12/31/99, so call in your order today.



**This offer applies only to the Xerox DocuPrint N40.**



DocuPrint N40



KEEP THE CONVERSATION GOING. SHARE THE KNOWLEDGE.

To order, call **1-800-ASK-XEROX ext. BUY** or visit **www.xerox.com**

1 8 0 0 2 7 6 9 3 7 6 4 4 1 2 8 9



## N-SERIES PRINTER OPTIONS

Memory options available for N17, N24, N32 and N40	Price
8 MB SDRAM (50 Ns EDO)	\$109.00
16 MB SDRAM (50 Ns EDO)	\$189.00
32 MB SDRAM (50 Ns EDO)	\$369.00

SKU #	Options available for N24, N32 and N40	Price
18T	DocuPrint N24/N32cn (Duplex + HCF) Kit	\$1,499.00
97K24890	Duplex Kit	\$550.00
97K24850	2500-Sheet Feeder	\$1,090.99
97K24830	Finisher/Stapler	\$1,790.00
97K29430	10-9in Mailbox	\$1,350.00
97K24870	100-Envelope Feeder	\$400.00
97K57180	Console Bracket, Mailbox	\$130.00
97K57190	Tabletop Bracket, Mailbox	\$130.00
97S02189	Ethernet 10/100 Base-T Interface Card	\$380.00
97S02035	Token Ring NIC	\$560.00
97S02217	2.1 GB Hard Disk	\$520.00

SKU #	Options available for N24 and N32 only	Price
108R00348	Maintenance Kit (30k life)	\$599.00
108R00158	Staple Cartridge (3 x 5000)	\$75.00

The N17, N24, N32, N40 and N32cn network printers all come with Xerox 1-Year On-site Warranty and Total Satisfaction Guarantee. Extended service available.



DocuPrint N17

### DocuPrint N17

Streamline printing of multiple page documents to free up your network.

Key Features	N17 (Net-ready)	N17n
Print Speed	17 ppm	17 ppm
Resolution (dpi)	1200 x 600	1200 x 600
Std. Memory (Max.)	16 MB (104)	16 MB (104)
Language	PS3/PCL5e	PS3/PCL5e
Max. Paper Size	8.5" x 14"	8.5" x 14"
Price	<b>\$1,269.99</b>	<b>\$995.99</b>
36-Month Lease	\$49.00/month	\$38.00/month

SKU #	Options		
97K22680	500-Sheet Universal Paper Feeder	\$220.00	\$220.00
97K22660	Duplex Module	\$295.00	\$295.00
97K22670	500-Sheet Offset Catch Tray (OCT)	\$375.00	\$375.00
97K22700	250-Sheet Adjustable Tray	\$100.00	\$100.00
97K22710	500-Sheet Adjustable Tray	\$128.00	\$128.00
97K22690	Envelope Feeder	\$300.00	\$300.00
113R0085	Print Cartridge (10k life)	\$195.00	\$195.00
108R0082	Fuser Cartridge (20k life)	\$270.00	\$270.00
97S02189	Ethernet 10/100 Base-T Interface Card	\$380.00	\$380.00
97S02035	Token Ring NIC	\$560.00	\$560.00
97S02217	2.1 GB Hard Disk	\$520.00	\$520.00

**Why to buy:** For high-end functionality on the desktop at 65,000 pages per month.

### DocuPrint N24

True multiple set printing productivity from advanced Xerox WorkSet™ Technology.

Key Features	
Print Speed	24 ppm
Resolution (dpi)	600 x 600
Std. Memory (Max.)	24 MB (128)
Language	PS3/PCL5e
Max. Paper Size	11" x 17"
Price	<b>\$2,219.99</b>
36-Month Lease	\$79.00/month

SKU #	Options	
113R00173	Print Cartridge (23k life)	\$299.00
97K24870	100-Envelope Feeder	\$400.00
97S02217	2.1 GB Hard Disk	\$520.00

**Why to buy:** Affordable production-level paper handling, document collating and stapling with volume up to 100,000 pages per month.

DocuPrint N24/32/40fn configuration



DocuPrint cn configuration with mailbox feature

DocuPrint N40/N32/N24

### DocuPrint N32

Delivers true multiple set printing and multi-vendor printer management, plus production-level paper handling, document collating and stapling. DocuPrint N32cn and N32fn models have high-capacity feeder and duplex. N32fn also has copier-like finishing/stapler feature.

Key Features	N32	N32cn (console version)	N32fn (finisher version)
Print Speed	32 ppm	32 ppm	32 ppm
Resolution (dpi)	600 x 600	600 x 600	600 x 600
Std. Memory (Max.)	24 MB (128)	24 MB (128)	24 MB (128)
Language	PS3/PCL5e	PS3/PCL5e	PS3/PCL5e
Max. Paper Size	11" x 17"	11" x 17"	11" x 17"
Price	<b>\$2,499.99</b>	<b>\$3,795.99</b>	<b>\$5,595.99</b>
36-Month Lease	\$89.00/month	\$135.00/month	\$199.00/month

SKU #	Options			
113R00173	Print Cartridge (23k life)	\$299.00	\$299.00	\$299.00
97K24870	100-Envelope Feeder	\$400.00	\$400.00	\$400.00
97S02217	2.1 GB Hard Disk	\$520.00	\$520.00	\$520.00

**Why to buy:** Suitable for larger networked departments that need to print up to 150,000 pages per month.



**Xerox Network Printers Take Editor's Choice Awards.**



Designed for direct-connect and networked office environments requiring quick, easy access to full-color capabilities.



DocuPrint NC60

**NEW**



### DocuPrint NC60

High-quality networked laser color at a very affordable price.

Key Features	
Print Speed	15 ppm black, 3-5 ppm color
Resolution (dpi)	600 x 600
Std. Memory (Max.)	64 MB (128)
Language	PS3/PCL5c
Max. Paper Size	8.5" x 14"
Price	<b>\$2,599.99</b>
36-Month Lease	\$ 93.00/month

**Why to buy:** To get a breakthrough price on a workgroup color laser printer that can handle up to 20,000 pages per month.

PERSONAL/SMALL OFFICE PRINTERS



DocuPrint XJ6C

### DocuPrint XJ6C

Color inkjet features Xerox ImageFix Software to automatically improve photos. Separate ink cartridges eliminate the expense of wasted ink.

Key Features	
Prints up to	5 ppm black, 2 ppm color
Memory	512 KB
Resolution (dpi)	600 x 600
Photo Print Cartridge	Optional
Warranty	3 Years
Price	<b>\$129.99</b>



**NEW**

### DocuPrint C8

Affordable, quality color, plus laser-like crisp black text makes this inkjet printer perfect for home offices.

Key Features	
Prints up to	7 ppm black, 2.5 ppm color
Resolution (dpi)	up to 1200 x 600
Paper Capacity	100 sheets
Max. Paper Size	8.5" x 14"
Warranty	1 year
Interface	Parallel
Price	<b>\$149.00</b>

**Why to buy:** Quick "return to application" frees up PC when printing so you can get back to work.



**NEW**

### DocuPrint C11

Prints in brilliant color or laser-sharp black and white for impressive business or personal documents, such as reports, Web photos, banners and other great-looking pages.

Key Features	
Prints up to	8 ppm black, 5 ppm color
Resolution (dpi)	up to 1200 x 1200
Paper Capacity	100 Sheets
Max. Paper Size	8.5" x 14"
Warranty	1 year
Interface	Parallel
Price	<b>\$249.00</b>

**Why to buy:** Provides photo-quality printing right out of the box—no optional cartridge needed.



**NEW**

### DocuPrint C15

High quality, small footprint, great performance at fast 6 pages per minute full color. Also prints 10 ppm black and white.

Key Features	
Prints up to	10 ppm black, 6 ppm color
Resolution (dpi)	1200 x 1200
Max. Paper Size	8.5" x 14"
Warranty	1 year
Interfaces	Parallel, optional External Ethernet Adapter
Price	<b>\$ 329.00</b>

**Why to buy:** Get it with the optional external Ethernet Adapter to give all users in a shared workgroup access to the benefits of color.



### DocuPrint C20

Robust large-format capability of DocuPrint C20 expands your color options and prints on sizes up to 12.6" x 22".

Key Features	
Prints up to	8 ppm black, 4 ppm color
Resolution (dpi)	600 x 600
Max. Paper Size	12.6" x 22"
Warranty	1 year
Interfaces	Parallel, optional External Ethernet Adapter
Price	<b>\$879.00</b>

**Why to buy:** Get it with the optional six-color photo cartridge option for enriched color saturation and photo-quality results.



DocuPrint C20



DocuPrint C15



KEEP THE CONVERSATION GOING. SHARE THE KNOWLEDGE.

To order, call **1-800-ASK-XEROX ext. BUY** or visit **www.xerox.com**





**NEW**

**DocuColor 4 LP**



A DocuColor laser printer for business and graphic arts markets features embedded electronics for imaging controller. Advanced Xerox color technology results in exceptionally high image quality at a reasonable cost.

Key Features	
Copies/Minute	16 ppm black, 4 ppm color
Resolution (dpi)	600 x 600 x 8-bit color
Max. Paper Size	13" x 18"
Monthly Volume	2,500 - 5,000 prints
Standard Paper Trays	One
Network Connectivity	Standard
Configurations starting at	<b>\$6,995.00</b>

**Why to buy:** Now you can create high-impact color and crisp black-and-white prints at a very affordable price. Recommended monthly volume: 2,500 to 5,000 prints.

**DocuColor Office 6 Copier/Printer**

The Xerox DocuColor Office 6 combines the image quality and reliability of a Xerox digital color copier/printer with a controller to print color-intensive documents at 6 pages per minute. The server's job is to provide consistent color quality for all your color-on-demand needs.

Key Features	
Copies/Minute	24 ppm black, 6 ppm color
Resolution (dpi)	400 x 400 x 8-bit color
Max. Paper Size	12" x 18"
Collation Type	Electronic Collation standard
Automatic Document Feeder	Optional
Monthly Volume	5,000
Reduction/Enlargement	25 - 400%
Standard Paper Trays	3
Edit Pad and Pen	Optional
Network Connectivity	Included
Configurations starting at	<b>\$19,995.00</b>

**Why to buy:** Economical, productive solution to producing multiple color sets FAST. Monthly recommended volume is 5,000.

**GREAT COLOR.  
GREAT FOR BUSINESS.**

In business, color does more than make documents look good. Study after study proves that it draws more attention, persuades more effectively, builds excitement and speeds response.

Xerox has the industry's broadest spectrum of digital color solutions and services. Color that helps you sell ideas, generate revenue and grab a big competitive advantage. And Xerox is making color more affordable than ever.







**Color  
servers  
enable  
high-quality  
color  
production.**

Xerox has exclusive connectivity solutions for some of the fastest, most cost-effective, easy-to-use, full-featured digital controllers available. Providers include Electronics for Imaging (EFI), Splash and Scitex in a variety of configurations to support a wide array of network demands.

Your color copier/printer is designed and engineered to produce high-quality color documents at multiple pages per minute. The controller provides consistent color quality for all your color-on-demand needs: exceptional digital color fidelity, reliable performance and network capability.



KEEP THE CONVERSATION GOING. SHARE THE KNOWLEDGE.

To order, call **1-800-ASK-XEROX ext. BUY** or visit **www.xerox.com**

1 8 0 0 2 7 5 9 3 7 6 ext. 2 8 9



# When the only task is copying.

Some 50 years after having introduced the first copier, Xerox continues to market the broadest line of copiers in the industry. As always, Xerox copiers offer state-of-the-art reliability, copy quality and ease of use. You can also count on world-class service and support—all designed to make classic Xerox quality more affordable than ever. We pay great attention to customer call response times, the latest diagnostic equipment and availability of 24-hour-a-day, seven-day-a-week service.



5626 with Duplex Automatic Document Feeder, optional 10-Bin Sorter and optional Convenience Stapler

## 5624



This 24-ppm copier is just right for the busy small office.

### Key Features

Copies/Minute	24
Volume Range	Low-Mid
Zoom	Yes
Reduction/Enlargement	50% - 200%
Simplex/Duplex	Simplex
Book Copying	Yes
DocFeed Type	Optional
Sorting	Optional
Extra Trays	Optional
Staple	Optional
AutoFinishing/Stapler	Optional
Base price	<b>\$2,900.00</b>
36-month lease price	\$113.73/month
FSMA (Full-Service Maintenance Agreement)	\$21.00/month

### Purchase & lease options

2-Tray Paper Supply with Auto Document Feeder	\$1,755.00 or \$63.82/month
10-bin Sorter without Convenience Stapler	\$945.00 or \$34.37/month
10-bin Sorter with Convenience Stapler	\$1,195.00 or \$43.46/month
10-bin Sorter/Finisher	\$1,585.00 or \$57.64/month
20-bin Sorter/Finisher	\$2,270.00 or \$82.55/month

**Why to buy:** For great features and improvements that have never been available before on a compact Xerox copier in this speed class.

## 5626



Convenient copier features extra trays to let you have up to 700 sheets ready to go.


### Key Features

Copies/Minute	24
Volume Range	Low-Mid
Zoom	Yes
Reduction/Enlargement	50% - 200%
Simplex/Duplex	Duplex
Book Copying	Yes
DocFeed Type	Yes
Sorting	Yes
Extra Trays	Yes
Staple	Optional
AutoFinishing/Stapler	Optional
Base price	<b>\$6,845.00</b>
36-month lease price	\$253.56/month
FSMA (Full-Service Maintenance Agreement)	\$21.00/month

### Purchase & lease options

10-bin Sorter without Convenience Stapler	\$945.00 or \$34.37/month
10-bin Sorter with Convenience Stapler	\$1,195.00 or \$43.46/month
10-bin Sorter/Finisher	\$1,585.00 or \$57.64/month
20-bin Sorter/Finisher	\$2,270.00 or \$82.55/month

**Why to buy:** Standard Automatic Document Feeder lets you load up to 40 originals for automatic copying.

This symbol  next to a product means you can call for the latest price or a quote on that product.

This symbol  next to a product means that product is available for purchase or lease on our Web site, as well as by phone.

**5818**



Convenient, compact copier designed for the walk-up user.

Key Features	
Copies/Minute	21
Volume Range	Low-Mid
Zoom	Yes
Reduction/Enlargement	64% - 156%
Simplex/Duplex	Simplex
Book Copying	Yes
DocFeed Type	Optional
Sorting	Yes
Extra Trays	Optional
Staple	Optional
AutoFinishing/Stapler	No
Base price	<b>\$2,740.00</b>
36-month lease price	\$104.73/month
FSMA (Full-Service Maintenance Agreement)	\$16.00/month
Purchase & lease options	
2-Tray Paper Supply	\$325.00 or \$11.82/month
2-Tray Paper Supply with Auto Document Feeder	\$1,110.00 or \$40.37/month
10-bin Sorter without Convenience Stapler	\$810.00 or \$29.46/month
10-bin Sorter with Convenience Stapler	\$1,050.00 or \$38.18/month

**Why to buy:** For reliable performance from 2,000 to 25,000 copies per month.

**5820**



Valuable features let you make great copies day in and day out.

Key Features	
Copies/Minute	21
Volume Range	Low-Mid
Zoom	Yes
Reduction/Enlargement	64% - 156%
Simplex/Duplex	Duplex
Book Copying	Yes
DocFeed Type	Yes
Sorting	Yes
Extra Trays	Yes
Staple	Optional
AutoFinishing/Stapler	Optional
Base price	<b>\$5,575.00</b>
36-month lease price	\$204.19 / month
FSMA (Full-Service Maintenance Agreement)	\$18.00/month
Purchase & lease options	
10-bin Sorter without Convenience Stapler	\$810.00 or \$29.46/month
10-bin Sorter with Convenience Stapler	\$1,050.00 or \$38.18/month

**Why to buy:** Duplex feature saves you money by using both sides of a page.



5818 with Automatic Document Feeder, 2-Tray Drawer, Stand, 10-Bin Sorter and Convenience Stapler

**5828**



Compact console copier has the extra speed you need to churn out the work.

Key Features	
Copies/Minute	30
Volume Range	Low-Mid
Zoom	Yes
Reduction/Enlargement	50% - 200%
Simplex/Duplex	Simplex
Book Copying	Yes
DocFeed Type	Optional
Sorting	Yes
Extra Trays	Yes
Staple	Optional
AutoFinishing/Stapler	Optional
Base price	<b>\$4,420.00</b>
36-month lease price	\$159.37 /month
FSMA (Full-Service Maintenance Agreement)	\$15.00/month
Purchase & lease options	
2-Tray Paper Supply with Platen Copier	\$685.00 or \$24.91/month
2-Tray Paper Supply with Auto Document Feeder	\$1,080.00 or \$39.28/month
10-bin Sorter without Convenience Stapler	\$945.00 or \$34.37/month
10-bin Sorter with Convenience Stapler	\$1,195.00 or \$43.46/month
10-bin Sorter/Finisher	\$1,585.00 or \$57.64/month
20-bin Sorter/Finisher	\$2,270.00 or \$82.55/month

**Why to buy:** Advanced features give you more control over image quality. Monthly volume of 40,000 copies.

**5830**



Huge paper capacity lets you produce a tremendous volume of work without interruption.

Key Features	
Copies/Minute	30
Volume Range	Low-Mid
Zoom	Yes
Reduction/Enlargement	50% - 200%
Simplex/Duplex	Duplex
Book Copying	Yes
DocFeed Type	Yes
Sorting	Yes
Extra Trays	Optional
Staple	Optional
AutoFinishing/Stapler	Optional
Base price	<b>\$6,705.00</b>
36-month lease price	\$239.83 /month
FSMA (Full-Service Maintenance Agreement)	\$15.00/month
Purchase & lease options	
4-Tray Paper Supply	\$725.00 or \$26.18/month
10-bin Sorter	\$945.00 or \$34.37/month
10-bin Sorter with Convenience Stapler	\$1,195.00 or \$43.46/month
10-bin Sorter/Finisher	\$1,585.00 or \$57.64/month
20-bin Sorter/Finisher	\$2,270.00 or \$82.55/month

**Why to buy:** For reliable performance from 5,000 to 40,000 copies per month. Optimal volume is 10,000 copies per month.



5828/5830 with Duplex Automatic Document Feeder, 20-Bin Sorter/Finisher and High-Capacity Feeder



KEEP THE CONVERSATION GOING. SHARE THE KNOWLEDGE.

To order, call **1-800-ASK-XEROX ext. BUY** or visit **www.xerox.com**

1 8 0 0 2 7 5 9 3 7 6 ext. 2 8 9



**5837**



Delivers big performance in a small space.

Key Features	
Copies/Minute	37 ppm black
Max. Paper Size	11" x 17"
Auto Duplex	Included
Collation Type	-
Monthly Volume	45,000
Reduction/Enlargement	50 - 200%
Standard Paper Trays	3
Automatic Document Feeder	Auto document handler
Edge-trimming	Included
Collator	Optional
Binder	Not available
Stapler	Optional
Stitcher	Not available
Configurations starting at	<b>\$10,560.00</b>

**Why to buy:** For reliable performance up to 45,000 copies per month in a convenient, compact footprint.



**45,000 copies a month in a convenient, compact footprint.**

5837 with 20-Bin Multi-Position Sorter-Stapler

**One of the most reliable copying solutions in the business.**



5845c with 20-Bin Multi-Position Sorter-Stapler

**5845c/5855c**



Hard-working. Quiet. The advanced features you need to create a wide range of finished, professional-looking documents with **highlight color**.

Key Features	5845c/5855c
Copies/Minute	45/55 ppm black
Max. Paper Size	11" x 17"
Auto Duplex	Included
Collation Type	Offset Catch Tray
Monthly Volume	65,000
Reduction/Enlargement	50 - 200%
Standard Paper Trays	3 / 4
Automatic Document Feeder	Included
Edge-trimming	Included
Collator	Optional
Stacker	Optional
Stapler	Optional
Configurations starting at	
5845c	<b>\$15,120.00</b>
5855c	<b>\$20,320.00</b>

**Why to buy:** For reliable monthly volume between 7,500 and 60,000 copies on 5845 (optimal 35,000) and 10,000 to 75,000 copies on 5855 (optimal 40,000).

# Leasing or buying...

## what's right for you?

Whether you're thinking about leasing or buying, Xerox offers a full range of acquisition plans to help make the choice easier. As with most acquisitions, the two primary considerations involved in the lease-or-buy decision-making process are the accounting implications and the tax benefits.

Let's say you're looking for low monthly payments to manage your assets better. Assume you have figured the total price for each method (lease or buy) for the projected life of the equipment, including any tax benefits. At this point, you decide that you want to conserve your working capital and avoid tapping into existing credit resources.

You may also have decided to put a three-year limit on the time you anticipate keeping your equipment—the term for most office equipment lease contracts. In this case, leasing may be more advantageous. Our leases include full-service maintenance agreements (FSMA) to keep your equipment functioning perfectly. Having decided to lease, you opt for a contract that gives you:

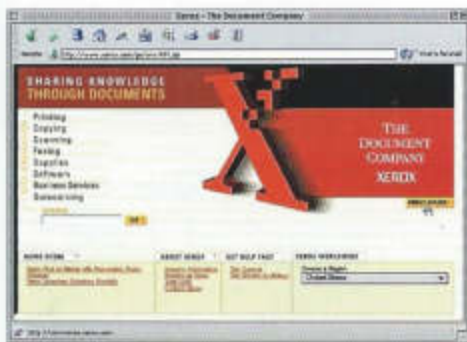
- Competitive rates and flexible terms
- Built-in service programs
- Free delivery, installation and set-up
- No added fees or hidden costs
- The convenience of working with one vendor for everything

On the other hand, if you intend to keep the equipment for more than three years, you'll probably want to buy outright. If you do buy outright, then keep the equipment after paying it off, the *long-term* costs of buying may be less than the cost of leasing. However you decide to go, you can lease or buy your selection via credit card or check. If you're acquiring a product online, you can use Electronic Funds Transfer.

For more information about financing office equipment, call 1-800-ASK-XEROX, ext. BUY, or visit our Web site at [www.xerox.com](http://www.xerox.com).

## Need more information?

Find it at [www.xerox.com](http://www.xerox.com)



We hope the first thing you notice when you log onto our new Xerox Web site is how user-friendly and flexible it is. We designed it that way—to make it as easy as possible for you to find the information you need.

As you move from page to page, you will find product descriptions and specifications far exceeding what we could fit in this catalog. Plus, along with communicating factual information about products and services, our Web content has another important purpose: to help you find out more about sharing knowledge through documents.

A selection of our products and corresponding supplies are available for purchase or lease directly from Xerox online. You'll find purchasing online with Xerox is fast and easy. You can

search or browse to find the product you want. Once you've selected any available options and a payment plan, add the product to your shopping cart. Click the "How to buy" button and follow instructions.



KEEP THE CONVERSATION GOING. SHARE THE KNOWLEDGE.

To order, call **1-800-ASK-XEROX ext. BUY** or visit [www.xerox.com](http://www.xerox.com)

1 8 0 0 2 7 5 9 3 7 6 ext. 2 8 9



Faxing ... copying ... PC-based printing and scanning ... all in one affordable, convenient, easy-to-use product.

Xerox multifunction solutions are an ideal way to make workflow faster, more efficient and more productive. You can make a copy from your desk instead of walking to the copier. Print with the click of a mouse. Or fax directly from your computer instead of printing and waiting in line to transmit it.

Along with meeting your high-quality fax standards, Xerox multifunction solutions perform their multiple tasks of printing, copying and scanning equal to or better than their stand-alone equivalents.

In simple terms, that means you get Xerox quality from top to bottom.

# Make light work of many tasks.



## Document WorkCentre Pro 545



The low-cost business fax that lets you print, copy and scan with laser quality and speed.

**Key Features**

Max. Faxes/Month	1400
Max. Office Users	5
Modem Speed (Kbps)	14.4
Upgradeable Modem	No
Print Pages/Minute	4
Max PC Print Resolution (dpi)	300
Standard Paper Capacity	250
Maximum Paper Capacity	250
LAN Faxing Ability	No
Scan Speed (ppm)	6
Maximum Memory (pps)	205
Base price	<b>\$999.00</b>
36-month lease	\$50.00/month
1-year FSMA	\$168.00
3-year FSMA	\$432.00

**Purchase and 36-month lease options**

6-foot bidirectional printer cable \$20.00 or \$7.73/month

**Why to buy:** For individual or very small workgroups with a fax demand of up to 1,400 transactions per month.



Document WorkCentre Pro 635/645

## Document WorkCentre Pro 635



Affordable multi-user fax system brings superior fax capabilities to your business.

**Key Features**

Max. Faxes/Month	3000
Max. Office Users	15
Modem Speed (Kbps)	14.4
Upgradeable Modem	Yes
Print Pages/Minute	8
Max PC Print Resolution (dpi)	600 Class
Standard Paper Capacity	250
Maximum Paper Capacity	500
LAN Faxing Ability	Yes
Scan Speed (ppm)	4
Maximum Memory (pps)	401
Base price	<b>\$1,799.00</b>
36-month lease	\$81.42/month
1-year FSMA	\$216.00
3-year FSMA	\$540.00

**Purchase and 36-month lease options**

2 MB upgrade	\$360.00 or \$13.09/month
4 MB upgrade	\$625.00 or \$22.73/month
DocuLAN Fax stand-alone version	\$295.00 or \$9.64/month
DocuLAN Fax 4 user	\$445.00 or \$16.18/month
DocuLAN Fax 8 user	\$805.00 or \$29.27/month
DocuLAN Fax 16 user	\$1,320.00 or \$48.00/month
33.6 Kbps/V.34 modem	\$520.00 or \$18.91/month
250-sheet paper tray	\$520.00 or \$18.91/month
6-foot bidirectional printer cable	\$20.00 or \$7.73/month
Telephone Handset	\$70.00 or \$2.55/month
Cabinet Stand	\$310.00 or \$11.27/month

**Why to buy:** Fast scan, high memory and upgradeability offer perfect solution for customers who currently have limited capital funds.

## Document WorkCentre Pro 645



Powerful fax performance for exceptional productivity, plus a pathway to the future.

**Key Features**

Max. Faxes/Month	3000
Max. Office Users	15
Modem Speed (Kbps)	14.4
Upgradeable Modem	Yes
Print Pages/Minute	8
Max PC Print Resolution (dpi)	600 Class
Standard Paper Capacity	250
Maximum Paper Capacity	500
LAN Faxing Ability	Yes
Scan Speed (ppm)	2
Maximum Memory (pps)	571
Base price	<b>\$1,999.00</b>
36-month lease	\$90.70/month
1-year FSMA	\$240.00
3-year FSMA	\$548.00

**Purchase and 36-month lease options**

2 MB upgrade	\$360.00 or \$13.09/month
4 MB upgrade	\$625.00 or \$22.73/month
DocuLAN Fax stand-alone version	\$295.00 or \$9.64/month
DocuLAN Fax 4 user	\$445.00 or \$16.18/month
DocuLAN Fax 8 user	\$805.00 or \$29.27/month
DocuLAN Fax 16 user	\$1,320.00 or \$48.00/month
33.6 Kbps/V.34 modem	\$520.00 or \$18.91/month
250-sheet paper tray	\$520.00 or \$18.91/month
6-foot bidirectional printer cable	\$20.00 or \$7.73/month
Telephone Handset	\$70.00 or \$2.55/month
Cabinet Stand	\$310.00 or \$11.27/month

**Why to buy:** JBIG technology and 2-second scan saves you time and money with every fax you send.



# Acclaimed series of fax systems let you custom-fit their performance to your needs.

## Document WorkCentre Pro 745/745DL/745SX



Key Features	
Max. Faxes/Month	5000
Max. Office Users	25
Modem Speed (Kbps)	14.4/Dual 14.4/33.6
Upgradeable Modem	Yes
Print Pages/Minute	11
Max. PC Print Resolution (dpi)	600 Class
Standard Paper Capacity	250
Maximum Paper Capacity	250/500/500
LAN Faxing Ability	Yes
Scan Speed (ppm)	1
Maximum Memory (pgs)	640
Base price or 36-month lease: 745	<b>\$2,999.00</b> or \$133.79/month
Base price or 36-month lease: 745DL	<b>\$3,499.00</b> or \$151.97/month
Base price or 36-month lease: 745SX	<b>\$3,499.00</b> or \$151.97/month
1-year FSMA (for all configurations)	\$468.00
3-year FSMA (for all configurations)	\$1,152.00

Option for the 745 ONLY:	
250-sheet paper tray	Purchase/36-month lease \$415.00 or \$ 14.99/month

Options available for Document WorkCentre Pro 745, 745DL and 745SX:	
	Purchase/36-month lease
4 MB upgrade	\$595.00 or \$21.84/month
DocuLAN Fax stand-alone version	\$265.00 or \$9.54/month
DocuLAN Fax 4 user	\$445.00 or \$15.18/month
DocuLAN Fax 8 user	\$805.00 or \$29.27/month
DocuLAN Fax 16 user	\$1,320.00 or \$48.00/month
Second fax line (with 14.4 Kbps modem)	\$495.00 or \$18.00/month
33.6 kbps/V.34 modem	\$495.00 or \$18.00/month
6-foot bidirectional printer cable	\$20.00 or \$ 7.73/month
Telephone Handset	\$65.00 or \$2.36/month
Cabinet Stand (for a 3-paper-tray 745)	\$175.00 or \$6.36/month
WorkCentre Stand (for a 2-paper-tray 745)	\$295.00 or \$10.73/month

**Why to buy:** Series is highly recommended for ease of use, fast scan and transmission time, and capacity for up to 5,000 transactions per month.

### Document WorkCentre Pro 745

Powerful, versatile fax system that also lets you print and copy. Now at a new low price.

### Document WorkCentre Pro 745DL



High-capacity, dual-line fax system that can send and receive simultaneously.

### Document WorkCentre Pro 745SX



Fastest, most efficient fax performance available with built-in Super G3 33.6 Kbps modem.



## Document WorkCentre Pro 657



High-performance fax system features the newest technology to handle the most demanding workloads.

Key Features	
Max. Faxes/Month	3000
Max. Office Users	15
Modem Speed (Kbps)	33.6
Print Pages/Minute	8
Max. PC Print Resolution (dpi)	600 Class
Standard Paper Capacity	500
Maximum Paper Capacity	500
LAN Faxing Ability	Yes
Scan Speed (ppm)	2
Maximum Memory (pgs)	571
Base price	<b>\$2,399.00</b>
36-month lease	\$108.24/month
1-year FSMA	\$276.00
3-year FSMA	\$766.00
Purchase and 36-month lease options	
2 MB upgrade	\$360.00 or \$13.08/month
4 MB upgrade	\$625.00 or \$22.73/month
DocuLAN Fax stand-alone version	\$265.00 or \$9.54/month
DocuLAN Fax 4 user	\$445.00 or \$15.18/month
DocuLAN Fax 8 user	\$805.00 or \$29.27/month
DocuLAN Fax 16 user	\$1,320.00 or \$48.00/month
6-foot bidirectional printer cable	\$20.00 or \$ 7.73/month
Telephone Handset	\$70.00 or \$2.55/month
Cabinet Stand	\$310.00 or \$11.27/month

**Why to buy:** Ideal for small workgroups that make up to 3,000 transactions per month.



Document WorkCentre Pro 745



KEEP THE CONVERSATION GOING. SHARE THE KNOWLEDGE.

To order, call **1-800-ASK-XEROX ext. BUY** or visit **www.xerox.com**

1 8 0 0 2 7 5 0 3 7 6 e x t . 2 8 0





# Xerox Certified Pre-Owned Equipment

## Top quality, economical, guaranteed... only the best are selected!

The Xerox certified pre-owned program offers you the best factory reconditioned copiers at a substantial savings and fully guaranteed by Xerox. You'll find a wide selection of the most popular Xerox copier models from 12 to 100 copies per minute, including color.

To ensure that only the best pre-owned Xerox equipment is selected for reconditioning, we look at age, service history and cosmetic condition. Once selected, each unit undergoes a 16-hour, 150-point ISO 9002 certified process.

From replacing parts to upgrading software, we do what it takes to bring the equipment up to Xerox quality and performance standards. Machines that pass our battery of tests **are covered by** the benchmark Xerox Total Satisfaction Guarantee.

For information about available certified pre-owned equipment, call 1-800-ASK-XEROX, ext. BUY. Some pre-owned products also are available online at <http://www.xerox.com/preowned>



Own this Xerox 5328 DZTAS Certified Pre-Owned copier for as little as **\$2,000.00** or lease for **\$116.73** a month. (Original manufacturer's list price **\$9,575.00**)

## The easy, secure, Web-based solution for managing and sharing information.

Web browsers make it easy to find and download information from the Internet. Xerox DocuShare makes it just as easy to post, manage and share information across your organization.

Simply install the DocuShare software on your Web server and you have an instant knowledge-sharing platform. Any authorized user can immediately post, manage, edit and share any type of file or scanned image—from text files to executables.

DocuShare is also available as an accessory to Document Centre 220 systems enabled for scanning.

Seamlessly integrates OCR into your word-processing tasks.



### TextBridge® Pro 9.0

TextBridge® Pro 9.0 **\$99.00**

TextBridge® Pro 9.0 is a product of ScanSoft, Inc.

The best way to scan, organize and use all of your color documents and photos.



### Pagis® Pro 2.0

Pagis® Pro 2.0 **\$99.00**

Pagis® Pro 2.0 is a product of ScanSoft, Inc.

### DocuShare Software

## DocuShare®

SHARE THE KNOWLEDGE

Key Features	DocuShare Basics	DocuShare Office	DocuShare Enterprise
Users	25	500	Unlimited
Designed for	Small workgroups	Private and public-sector institutions	Organizations with enterprise or global needs
Price	<b>\$1,349.00</b>	<b>\$14,995.00</b>	<b>\$44,995.00</b>



# Xerox Services and small business . . . a responsive relationship.

When it comes to understanding what it takes to keep your small or midsize business moving, Xerox offers you a world of services and support. Personal attention and powerful results—it's what you'd expect from a company recognized as one of the top 10 service providers worldwide. Every appointment you schedule with us includes an estimated time of arrival that we adhere to. You can rest assured that we'll always have the genuine Xerox parts you need.

## **Satisfaction guaranteed.**

Our commitment to our customers is demonstrated by the Xerox Total Satisfaction Guarantee: If you are not totally satisfied with your Xerox equipment, and if certain requirements are met, Xerox will replace it without charge to you with an identical model or a machine with comparable features and capabilities. (The complete Xerox Total Satisfaction Guarantee can be found on page 22.)

## **Well-trained, well-equipped people.**

We make sure you're satisfied right from day one. By working in teams, we keep you covered and your equipment running at peak performance. We continually upgrade our technologies to improve the functionality of your products, using only genuine Xerox parts. And because of our ongoing training and updates, no one knows your Xerox products better than Xerox people.

## **Xerox Service Agreements.**

Customers who choose a Xerox Service Agreement have access to a service organization long recognized as one of the best trained and best equipped in the industry. Service locations use advanced communications systems to provide your Xerox Service Representative with all the data needed to respond to your call quickly and efficiently. Find out just how much a Xerox Service Agreement can help make your job easier.



## **Xerox Customer Service . . . what you need, when you need it.**

Xerox gives you a complete range of services and customer support—long after the sale, no matter what product you buy. For more information about service, call **1-800-822-2979**.



KEEP THE CONVERSATION GOING. SHARE THE KNOWLEDGE.

To order, call **1-800-ASK-XEROX** ext. **BUY** or visit **www.xerox.com**



**XEROX**  
**TOTAL**  
**SATISFACTION**  
**GUARANTEE**

If you are not totally satisfied with any Xerox equipment ordered under this Agreement, and if certain requirements are met, Xerox will, at your request, replace it without charge with an identical model or, at the option of Xerox, with a machine with comparable features and capabilities. This guarantee will be effective for 3 years following initial equipment delivery, unless the equipment is financed by Xerox for more than 3 years, in which event it will be effective during the entire term of Xerox financing (except for certain previously installed models which receive coverage for one year). This guarantee applies only to equipment which has been continuously maintained by Xerox or its authorized representatives under a Xerox express warranty or Xerox Maintenance agreement.

## Don't forget the supplies.



To make sure you get the most out of your Xerox equipment, use Xerox supplies. They're specifically engineered for each Xerox model, and now they're easier

to get than ever before. Order them toll free, over the Web, or as part of your service agreement.

Unlike "generic" supplies that must work with many brands, purchasing Genuine Xerox paper and consumable supplies ensures that you are using products made to the highest standards for Xerox digital copiers and printers. From cartridges to transparencies, our products are designed to help you get fine image quality time after time along with reduced paper jams and machine downtime.

We even manufacture supplies for your non-Xerox equipment. From toner, developer and cartridges to paper, tab stock and everything else you need—count on genuine Xerox supplies to get the job done right.

### Basic Supply Orders to help you get started right.

We've put together the following "starter" kits to make it as easy as possible for you to move forward with your Xerox machine. You can order Genuine Xerox Supplies in packages that will keep you up and running for three or six months. Following are Basic Supply Orders (BSO) for Xerox products available on our Web site, as well as through this catalog.

<b>Xerox 5624/5626</b>	
3-month supply includes 1 cartridge pack and 3 cartons of 4200 DP paper	\$224.45
6-month supply includes 2 cartridge packs and 6 cartons of 4200 DP paper	\$448.90
<b>Xerox 5818/5820</b>	
3-month supply includes 1 cartridge pack and 3 cartons of 4200 DP paper	\$224.45
6-month supply includes 2 cartridge packs and 6 cartons of 4200 DP paper	\$326.90
<b>Xerox 5828/5830</b>	
3-month supply includes 1 cartridge pack and 3 cartons of 4200 DP paper	\$224.45
6-month supply includes 2 cartridge packs and 6 cartons of 4200 DP paper	\$448.90
<b>Xerox 212/214</b>	
3-month supply includes 1 cartridge pack and 3 cartons of 4200 DP paper	\$438.45
6-month supply includes 1 cartridge pack and 6 cartons of 4200 DP paper	\$540.90
<b>Document WorkCentre Pro 545</b>	
6-month supply includes 2 cartons of toner and 1 carton of cartridges	\$258.00
<b>Document WorkCentre Pro 635/645/657</b>	
6-month supply includes 3 cartons of toner	\$147.00
<b>Document WorkCentre Pro 745/745DL/745SX</b>	
6-month supply includes 3 cartons of toner and 2 cartons of cartridges	\$418.00

For Xerox Supplies, call: 1-800-822-2200, ext. 932.  
 Or visit our Web site at [www.xerox.com](http://www.xerox.com).

If you have questions about prices, availability or usage of any of our supplies, call or fax to the following: **TOLL FREE:** 1-800-822-2200 x 932 **FAX:** 1-800-338-7020  
 Monday - Friday, 8:00 a.m. - 8:00 p.m. EDT

# Worksheet

THE DOCUMENT COMPANY

XEROX

Use this worksheet so that we can quickly process your order when you call or go online.  
Remember to have your credit card handy.

Use this form as a worksheet.

<b>PRODUCT 1</b>	PRODUCT NAME	QUANTITY		PRICE
	OPTION	QUANTITY	+	PRICE
	OPTION	QUANTITY	+	PRICE
	OPTION	QUANTITY	+	PRICE
	OPTION	QUANTITY	+	PRICE
	SERVICE AGREEMENT OPTION			
PLEASE CONTACT ME TO DISCUSS SERVICE AGREEMENTS				
<b>SUBTOTAL</b>			=	

<b>PRODUCT 2</b>	PRODUCT NAME	QUANTITY		PRICE
	OPTION	QUANTITY	+	PRICE
	OPTION	QUANTITY	+	PRICE
	OPTION	QUANTITY	+	PRICE
	OPTION	QUANTITY	+	PRICE
	SERVICE AGREEMENT OPTION			
PLEASE CONTACT ME TO DISCUSS SERVICE AGREEMENTS				
<b>SUBTOTAL</b>			=	

<b>PRODUCT 3</b>	PRODUCT NAME	QUANTITY		PRICE
	OPTION	QUANTITY	+	PRICE
	OPTION	QUANTITY	+	PRICE
	OPTION	QUANTITY	+	PRICE
	OPTION	QUANTITY	+	PRICE
	SERVICE AGREEMENT OPTION			
PLEASE CONTACT ME TO DISCUSS SERVICE AGREEMENTS				
<b>SUBTOTAL</b>			=	

<b>SUPPLIES</b>	PRODUCT NAME	QUANTITY		PRICE
	PRODUCT NAME	QUANTITY	+	PRICE
	PRODUCT NAME	QUANTITY	+	PRICE
<b>SUBTOTAL</b>			=	

<b>TOTAL</b>	ALL APPLICABLE SALES AND USE TAXES AT SHIP-TO ADDRESS:	+	
	SHIPPING	+	
	<b>TOTAL</b>	=	



KEEP THE CONVERSATION GOING. SHARE THE KNOWLEDGE.

To order, call **1-800-ASK-XEROX ext. BUY** or visit [www.xerox.com](http://www.xerox.com)



# SMALL BUSINESS SPECIAL

If you are not totally satisfied with your Xerox equipment, and if certain requirements are met, at your request Xerox will replace it without charge to you with an identical model or a machine with comparable features and capabilities.

**XEROX**  
**TOTAL**  
**SATISFACTION**  
**GUARANTEE**

**Buy the award-winning  
DocuPrint N40 network  
laser printer and get a  
DocuPrint XJ6C color  
inkjet printer **FREE.****

**See page 9 for details.**

This special offer is available only by calling 1-800-ASK-XEROX ext. BUY or via the Xerox Web site at [www.xerox.com/specialn40](http://www.xerox.com/specialn40). In order to take advantage of this special offer you must use the code **specialn40** when ordering via the phone or Web.



DocuPrint XJ6C



DocuPrint N40

XEROX® The Document Company,® the digital X,® Document Centre,® Document WorkCentre,® DocuPrint,® DocuShare,® WorkCentre,® CentreWare,® 5624, 5626, 5818, 5820, 5837, 5845, 5855, "Keep the Conversation Going. Share the Knowledge.", 106f, 120f, 212, 214, 220DC, 220ST, 332ST, 340, 385, 480CX, 4LP, 545, 5828, 5830, 635, 645, 657, 745, C8, C11, C15, C20, N17, N24, N32, N40, NC60, Office 6, P1202, P8ex, PrinterMap, WorkSet, XD100, XD155df and XE80 are trademarks of XEROX CORPORATION. DocuColor™ is a trademark licensed to XEROX CORPORATION. Product and service names profiled herein are trademarks of XEROX CORPORATION. Any other named products profiled herein are trademarks of their respective companies. In support of Xerox' environmental leadership goals, Xerox equipment contains new components and/or reprocessed components that are reconditioned, and cartridges used in Xerox equipment contain new and/or reprocessed components that meet new performance standards. In order to enhance print quality, some cartridges are designed to cease functioning at a predetermined point. Product appearance and/or specifications are subject to change without notice. Xerox reserves its rights to correct any errors in this catalog and to change the price and terms and conditions for the acquisition of any product identified herein. All orders for products are subject to acceptance by Xerox. For the latest prices or a quote or for service agreement cost, please call 1-800-ASK-XEROX, ext. BUY. Please review the terms and conditions before ordering. Products ordered are for delivery only in the U.S. and its territories. Appropriate shipping charges will be added to your order.

**KEEP THE CONVERSATION GOING. SHARE THE KNOWLEDGE.**

**DIGITAL**  
THE DOCUMENT COMPANY  
**XEROX**

Xerox Corporation  
8700 Freeport Parkway  
Suite 100  
Irving, TX 75063  
Attention: Box C

PRSR STD  
US Postage  
**PAID**  
Xerox Corp.

Catalog Number

19-015317274

