

These drawings and specifications, and the data contained therein, are the exclusive property of Xerox Corporation and/or Rank Xerox, Ltd. issued in strict confidence and shall not, without the prior written permission of Xerox Corporation or Rank Xerox, Ltd., be reproduced, copied or used for any purpose whatsoever, except the manufacture of articles for Xerox Corporation or Rank Xerox, Ltd.

Title

ALTO II
 ASSEMBLY, CABLE - HY-TYPE/XREG
 (INTERNAL)

Xerox Corporation
 El Segundo, California

XEROX

216416

F

Sheet

3 Of 6

Wire No.	Term	From	To	Term	Wire Type	Notes	Signal	Cng. Let.
1		J3 - 13	J1 - 1		50		PPFSTR	
2		25	2				PREST	
3		12	3				PRIB	
4		24	4				PCHSTR	
5		11	5				PCARSTR	
6		23	6				PDATA1024	
7		10	7				PDATA512	
8		22	8				PDATA256	
9		9	9				PDATA128	
10		21	10				PDATA64	
11		8	11				PDATA32	
12		20	12				PDATA16	
13		7	13				PDATA8	
14		19	14				PDATA4	
15		6	15				PDATA2	
16		18	16				PDATA1	
17		5	17				PPFRDY	
18		17	18				PCHK	
19		4	19				PPO	
20		16	20				PCHRDY	
21		3	21				PRDY	
22		15	22				PCARRDY	
23		2	23				GROUND	
24		14	24				GROUND	
25		J3 - 1	J1 - 25				GROUND	
26		J4 - 13	J1 - 26		50		GROUND	

These drawings and specifications, and the data contained therein, are the exclusive property of Xerox Corporation and/or Rank Xerox, Ltd. issued in strict confidence and shall not, without the prior written permission of Xerox Corporation or Rank Xerox, Ltd., be reproduced, copied or used for any purpose whatsoever, except the manufacture of articles for Xerox Corporation or Rank Xerox, Ltd.

1. Ref Item No's in Applicable Material List.
2. Ref Designations Are Abbreviated. Prefix Each Designation With:

Title: ALTO II
ASSEMBLY, CABLE -
HY TYPE/X REG (INTERNAL)

Xerox Corporation
El Segundo, California

Sheet 5 Or 6

216416

F

565(3/73)

Wire No.	Term	From	To	Term	Wire Type	Notes	Signal	Chg. Let.
27		J4 - 25	J1 - 27		50		X(0)	
28		12	28				X(8)	
29		24	29				X(1)	
30		11	30				X(9)	
31		23	31				X(2)	
32		10	32				X(10)	
33		22	33				X(3)	
34		9	34				X(11)	
35		21	35				X(4)	
36		8	36				X(12)	
37		20	37				X(5)	
38		7	38				X(13)	
39		19	39				X(6)	
40		6	40				X(14)	
41		18	41				X(7)	
42		5	42				X(15)	
43		17	43				KEYWAY	
44		4	44				KEYWAY	
45		16	45				GROUND	
46		3	46				GROUND	
47		15	47				XREG	
48		2	48				SELI	
49		14	49				X(6)	
50		J4 - 1	J1 - 50		50		SELO	

These drawings and specifications, and the data contained therein, are the exclusive property of Xerox Corporation and/or Rank Xerox, Ltd. issued in strict confidence and shall not, without the prior written permission of Xerox Corporation or Rank Xerox, Ltd., be reproduced, copied or used for any purpose whatsoever, except the manufacture of articles for Xerox Corporation or Rank Xerox, Ltd.

1. Ref Item No's in Applicable Material List.
2. Ref Designations Are Abbreviated. Prefix Each Designation With:

Title ALTO II
ASSEMBLY, CABLE-
HY TYPE/X REG (INTERNAL)

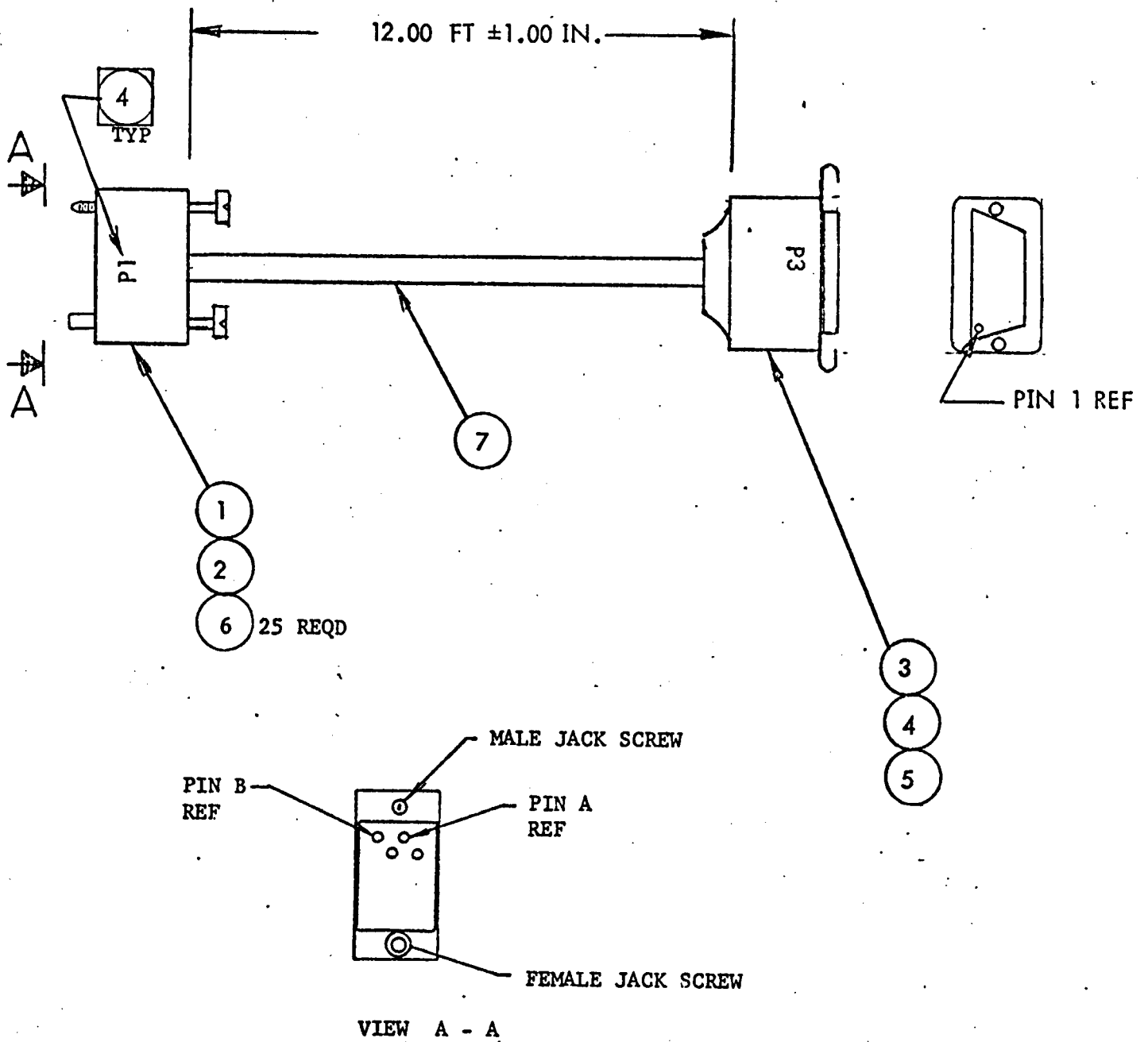
Xerox Corporation
El Segundo, California

216416

Sheet 6 Of 6

F

XEROX



These drawings and specifications, and the data contained therein, are the exclusive property of Xerox Corporation and/or Rank Xerox, Ltd. issued in strict confidence and shall not, without the prior written permission of Xerox Corporation or Rank Xerox, Ltd., be reproduced, copied or used for any purpose whatsoever, except the manufacture of articles for Xerox Corporation or Rank Xerox, Ltd.

Title ALTO II
 ASSEMBLY, CABLE
 HY TYPE (EXTERNAL)

Xerox Corporation
 El Segundo, California

XEROX

216440

C

Sheet 3 of 6

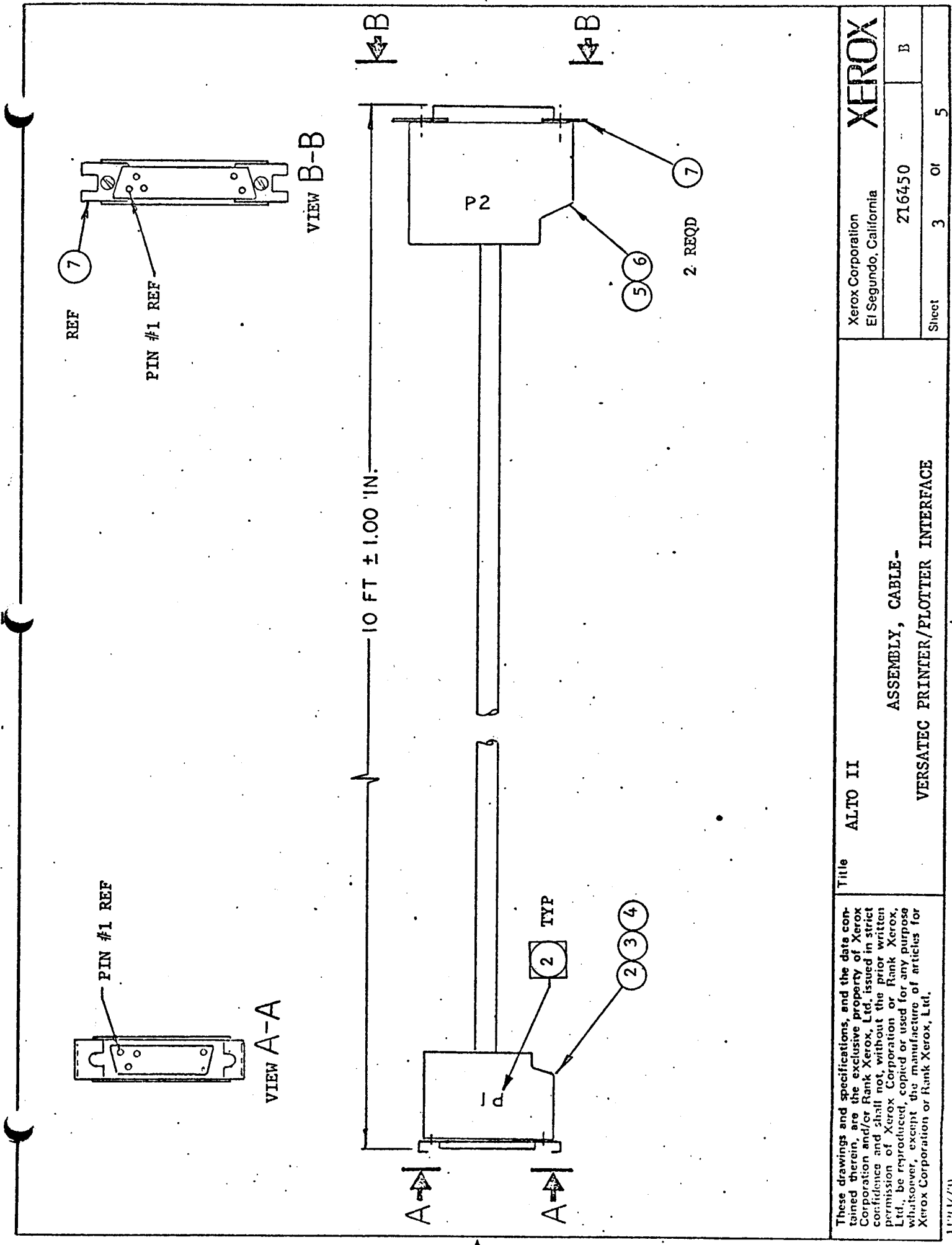
Wire No.	Term	From	To	Term	Wire Type	Notes	Signal	Chg. Let.
1		P1- h	P3- 18		7	BLACK	PDATA1	
2		j	6			WHITE	PDATA2	
3		m	19			RED	PDATA4	
4		f	7			GREEN	PDATA8	
5		k	20			ORANGE	PDATA16	
6		i	8			BLUE	PDATA32	
7		g	21			WHT/BLK	PDATA64	
8		d	9			RED/BLK	PDATA128	
9		b	22			GRN/BLK	PDATA256	
10		v	10			ORN/BLK	PDATA512	
11		F	23			BLU/BLK	PDATA1024	
12		E	25			BLK/WHT	PREST	
13		P	24			RED/WHT	PCHSTR	
14		K	11			GRN/WHT	PCARSTR	
15		C	13			BLU/WHT	PPFSTR	
16		M	12			BLK/RED	PRIB	
17		a	3			WHT/RED	PRDY	
18		B	17			ORN/RED	PCHK	
19		R	4			BLU/RED	PPO	
20		Y	16			RED/GRN	PCHRDY	
21		W	15			ORN/GRN	PCARRDY	
22		c	5			BLK/WHT/GRN	PPFRDY	
23		A	2			WHT/BLK/RED	GROUND	
24		D	14			RED/BLK/WHT	GROUND	
25		P1- J	P3- 1		7	ORN/BLK/WHT	GROUND	
26		P1- S	P1- T		8		SELECT PRINTER	

These drawings and specifications, and the data contained therein, are the exclusive property of Xerox Corporation and/or Rank Xerox, Ltd. issued in strict confidence and shall not, without the prior written permission of Xerox Corporation or Rank Xerox, Ltd., be reproduced, copied or used for any purpose whatsoever, except the manufacture of articles for Xerox Corporation or Rank Xerox, Ltd.

1. Ref Item No's in Applicable Material List.
2. Ref Designations Are Abbreviated. Prefix Each Designation With:

Title ALTO II
ASSEMBLY, CABLE-HY TYPE (EXTERNAL)

Xerox Corporation
El Segundo, California
216440
C



These drawings and specifications, and the data contained therein, are the exclusive property of Xerox Corporation and/or Rank Xerox, Ltd. issued in strict confidence and shall not, without the prior written permission of Xerox Corporation or Rank Xerox, Ltd., be reproduced, copied or used for any purpose whatsoever, except the manufacture of articles for Xerox Corporation or Rank Xerox, Ltd.

Title ALTO II

ASSEMBLY, CABLE-
VERSATEC PRINTER/PLOTTER INTERFACE

XEROX	
Xerox Corporation El Segundo, California	
216450	B
Sheet 3	OF 5