



Idorst.

JAN 20 1986
COMMUNICATIONS
ADMINISTRATION

PUBLICATIONS RELEASE
System 80
Summary of Current Documentation
December 1985
UP-8986

This Library Memo announces the release and availability of "SPERRY System 80 Summary of Current Documentation, December 1985", UP-8986. This is a Standard Library Item (SLI).

This summary lists the current and orderable System 80 documentation items released through the month of December 1985. The summary has four sections.

● Section 1. General Information

This section:

- Explains what documents customers are entitled to upon purchase or lease of a SPERRY System 80
- Gives information about the ordering of items listed in this summary
- Notes the use of technical material mailing lists to inform users of System 80 about new, revised, and updated documents and how to get on the lists
- Explains the entries in the columnar listings in Section 2 and 3

● Section 2. Alphabetical Listing

This section lists items alphabetically by title. The listing includes an abstract for each document listed.

● Section 3. Numerical listing

This section lists items numerically by document number in this sequence of prefixes: UD1- and UP-. Please note that items with document numbers prefixed by UD1- should be ordered from Stationery Stock.

● Section 4. Mailing List Configurator

This section lists the various technical materials mailing list numbers assigned to the System 80 products and the documentation available to support each product.

Destruction Notice: This issue of UP-8986 supersedes and replaces the previous issue dated February 1984. Please destroy all copies of the issue dated February 1984.

NOTE: When ordering items for the SPERRY System 80, please refer to this summary for the current information.

Additional copies may be ordered by your local Sperry representative.

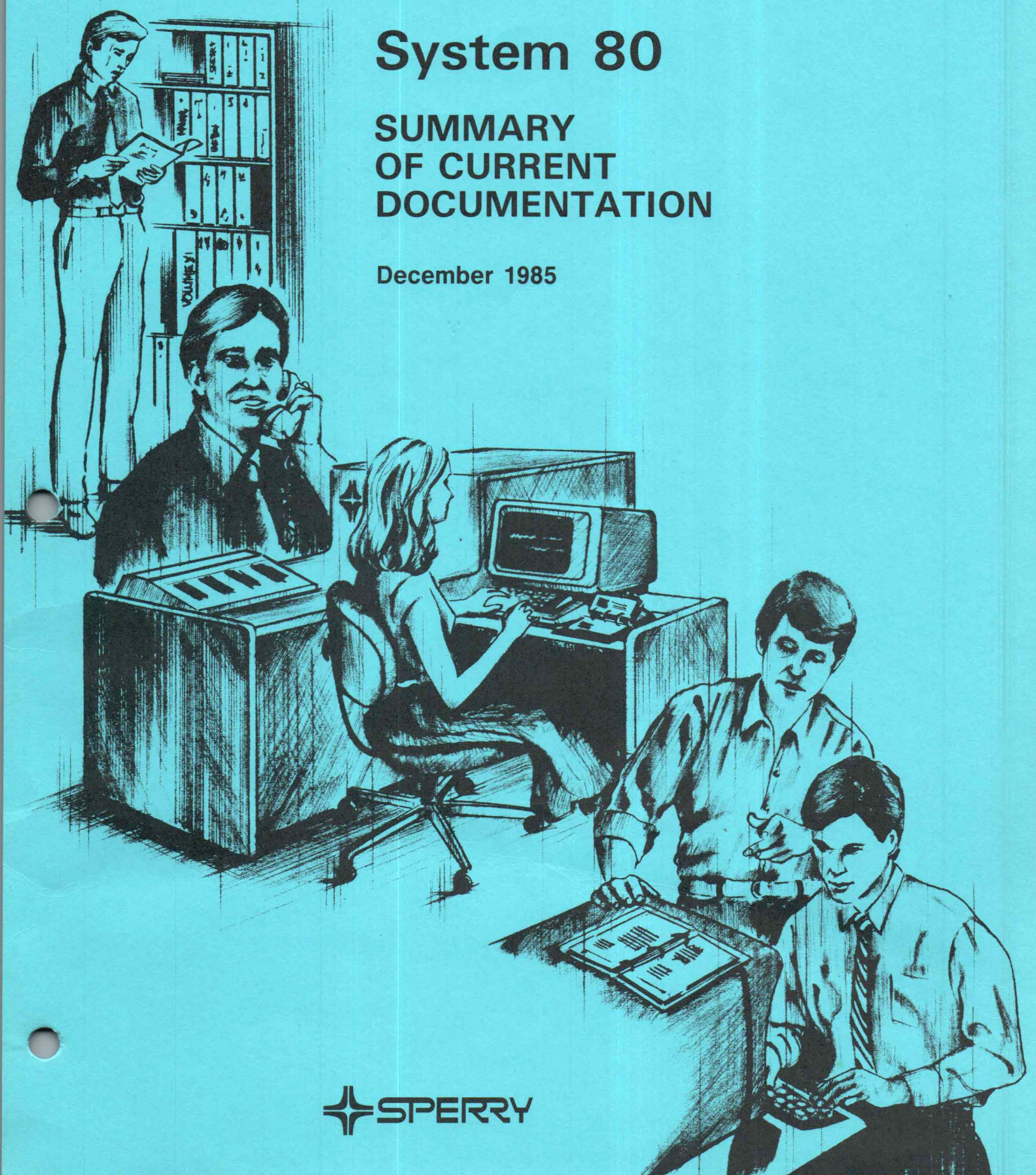
LIBRARY MEMO ONLY	LIBRARY MEMO AND ATTACHMENTS	THIS SHEET IS
Mailing Lists BZ, CZ (less HA) MZ, 28U, 29U	Mailing Lists B00, B01, and HA (Cover and 99 pages)	Library Memo for UP-8986
		RELEASE DATE: December 1985



System 80

SUMMARY OF CURRENT DOCUMENTATION

December 1985



 SPERRY

This document contains the latest information available at the time of preparation. Therefore, it may contain descriptions of functions not implemented at manual distribution time. To ensure that you have the latest information regarding levels of implementation and functional availability, please consult the appropriate release documentation or contact your local Sperry representative.

Sperry reserves the right to modify or revise the content of this document. No contractual obligation by Sperry regarding level, scope, or timing of functional implementation is either expressed or implied in this document. It is further understood that in consideration of the receipt or purchase of this document, the recipient or purchaser agrees not to reproduce or copy it by any means whatsoever, nor to permit such action by others, for any purpose without prior written permission from Sperry.

FASTRAND, ✦SPERRY, SPERRY, SPERRY✦UNIVAC, SPERRY UNIVAC, UNISCOPE, UNISERVO, UNIVAC, and ✦ are registered trademarks of the Sperry Corporation. ESCORT, MAPPER, PAGEWRITER, PIXIE, SPERRYLINK, and UNIS are additional trademarks of the Sperry Corporation. USERNET, MAPPER, and CUSTOMCARE are service marks of the Sperry Corporation.

Contents

CONTENTS

1. GENERAL INFORMATION

1.1.	PURPOSE OF THIS SUMMARY	1
1.2.	ITEMS LISTED IN THIS SUMMARY	1
	Items Listed in Sections 2 and 3	1
	Items Listed in Section 4	3
1.3.	CUSTOMER ENTITLEMENT	3
1.4.	ORDERING PROCEDURE	4
1.5.	MAILING LISTS	4

2. ALPHABETICAL LISTING

3. NUMERICAL LISTING

4. SYSTEM 80 MAILING LIST CONFIGURATOR

USER COMMENT SHEET



1. General Information

1.1. PURPOSE OF THIS SUMMARY

This summary is a guide to documents and documentation aids available to users of the SPERRY System 80. It will be revised and reprinted as necessary.

Publications supporting application programs available from the Applications Services Distribution Center are listed in the Applications Services Library Directory. (This directory lists documents prefixed by UA.)

1.2. ITEMS LISTED IN THIS SUMMARY

Sections 2 and 3 of this summary list manuals, technical bulletins, Program Product Specifications, release announcements and descriptions, and coding forms. They also list binders, index tabs, and similar aids.

Section 4 lists the standard and restricted distribution library items for each System 80 product.

Items Listed in Sections 2 and 3

Section 2 lists these items alphabetically by title. Section 3 lists them in ascending numerical sequence by the following prefixes:

The image shows the prefix "UD1-" in a bold, sans-serif font, centered within a rectangular box that has a background of horizontal lines.

This prefix precedes document numbers for coding forms, flowchart templates, and similar items.

The image shows the prefix "UP-" in a bold, sans-serif font, centered within a rectangular box that has a background of horizontal lines.

This prefix generally precedes document numbers for system software and hardware manuals, Program Product Specifications, and binders.

Sections 2 and 3 list information in columnar form under one of these two headers:

SECTION 2

TITLE AND DESCRIPTION	DOC. NO.	TYPE	NO. PAGES	STATUS
-----------------------	----------	------	-----------	--------

SECTION 3

DOC. NO.	TITLE AND DESCRIPTION	TYPE	NO. PAGES	STATUS
----------	-----------------------	------	-----------	--------

TITLE AND DESCRIPTION

This column lists the title and document category (user guide, programmer reference, etc) of each item and any update packages for the item. In Section 2, this column also summarizes the content of documents.

DOC. NO.

This column lists the document number and any update packages for each item.

TYPE

This column lists the type of distribution to be made:



Restricted distribution (not provided as part of standard library; must be purchased by customer)



Standard library item (provided automatically as part of product)

An update package with the same type of distribution as its base document gets no type designation.

NO. PAGES

This column gives the number of pages in each item.

STATUS

This column identifies by a double dagger (‡) those items added or changed since the last issue of this summary.

Items Listed in Section 4

Section 4 lists:

- mailing list numbers in alphanumeric sequence;
- the product associated with each number; and
- the documentation available to support each product.

Both standard and restricted distribution items are listed.

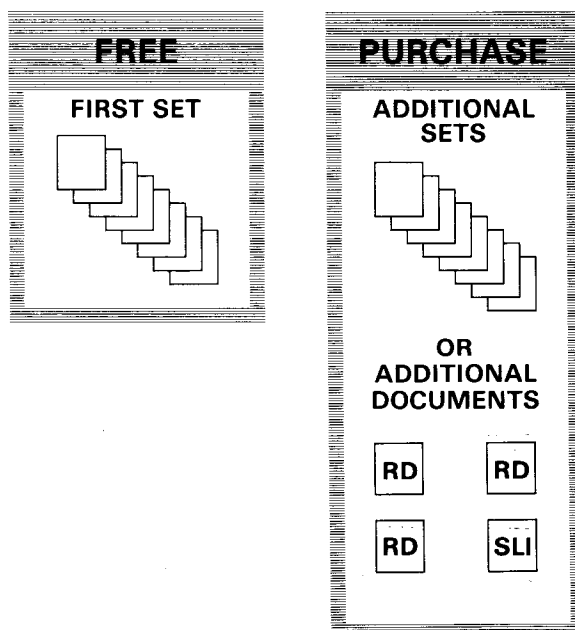
1.3. CUSTOMER ENTITLEMENT

Each customer receives without charge one set of standard library items based on the System 80 configuration purchased or leased. Section 4 lists the standard library items for each System 80 product.

Customers are also entitled to receive any updates or revisions to their standard library items as they become available. However, to receive these updates their names must be placed on the appropriate mailing lists by a Sperry Sales Representative or Systems Analyst Account Representative.

The documents in each set shipped are the latest versions of the documents. Since individual documents are subject to revision or updating at any time, sets cannot be returned.

A charge is made for each additional set or document ordered. All restricted distribution items must be ordered.



Sperry maintains an automatic back-order service for customers normally receiving a complete set. That is, if an item is not included in a set when it is shipped, the item is mailed as soon as it becomes available. There is no need to reorder it.

1.4. ORDERING PROCEDURE

Only Sperry personnel can order items listed in this summary. To arrange for the ordering of an item, see your Sperry Sales Representative or Systems Analyst Account Representative.

To expedite the handling of your requests, keep these two things in mind:

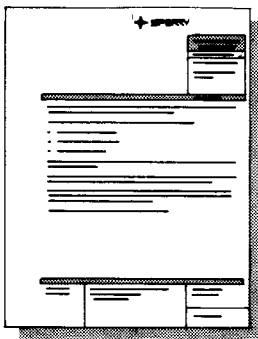
1

The latest version of a requested document is shipped, regardless of the revision level specified, unless the order states that the revision level specified is required to support a system using an earlier release level.

2

Previous versions of a document are stocked for only 6 months after the announcement of a new version. Thus, a request for a previous version of a document after this 6-month period usually requires individual reproduction of the document. This usually increases the cost of the document and delays its delivery.

1.5. MAILING LISTS



Sperry maintains technical material mailing lists to inform users of its systems about new, revised, and updated documents. Persons on these lists generally receive informational release memos and related attachments for a particular system. If you want automatic delivery of updates and revisions to a set of standard library items when they become available, you must arrange to have your name placed on the mailing list for that set. To do this, see your Sperry Sales Representative or Systems Analyst Account Representative. These representatives are the only ones who can place a customer name on a technical material mailing list.

2. Alphabetical Listing

TITLE AND DESCRIPTION	DOC. NO.	TYPE	NO. PAGES	STATUS
ASSEMBLER Introduction	UP-8030 R2	SLI	26	
Describes, in easy-to-understand language, the OS/3 basic assembly language (BAL). Lists the features of the OS/3 assembler, and describes the programming aids available to the OS/3 assembler programmer.				
ASSEMBLER Program Product Specification	UP-9265.18	SLI	4	
ASSEMBLER Programmer Reference	UP-8914	SLI	372	
Provides a quick-reference manual for the experienced assembler programmer, summarizing the use of BAL instructions, directives, and other language facilities.				
UPDATE PACKAGE A	UP-8914-A		42	
Discusses enhancements to the assembler for OS/3 Release 7.1, including: new instructions: IPL and SWLS; deleted instructions: ENQ, DEQ, STEP, and MSS; and a new assembler listing option: LST=NR.				
UPDATE PACKAGE B	UP-8914-B		99	
Documents the following enhancement for Release 8.0: display of final error messages on the console; addition of two privileged instructions (Get IORB, Put IORB); and an additional warning message when using continuation characters with macroinstructions.				
UPDATE PACKAGE C	UP-8914-C		28	
Contains corrections or clarifications applicable to features present in the OS/3 Assembler prior to Release 8.2.				
UPDATE PACKAGE D	UP-8914-D		6	‡
Describes for Release 9.0 a change to the ICM instruction.				

‡ Denotes items added or changed since the last issue of this summary.

TITLE AND DESCRIPTION	DOC. NO.	TYPE	NO. PAGES	STATUS
ASSEMBLER User Guide	UP-8913	SLI	930	
Describes, for both novice and experienced programmers, the OS/3 basic assembly language (BAL) and its use. Discusses general language concepts, assembler instructions, and programming techniques.				
UPDATE PACKAGE A	UP-8913-A		84	
Discusses assembler features new to OS/3 Release 7.1, including: added IPL and SWLS instructions; a new option, LST=NR, for the ASM listing parameter; ASM, ASML, and ASMLG jproc enhancements to accept cataloged files for input, output, macro library, COPY source code library, and alternate load library files. Deletes ENQ, DEQ, STEP, and MSS instructions.				
UPDATE PACKAGE B	UP-8913-B		193	
Provides enhancements to the assembler for OS/3 Release 8.0, including: two privileged instructions (Put IORB, Get IORB); an additional UPSI byte setting for diagnostic errors; addition of STXIT island code; display of error messages on the console or workstation; and an additional warning message when using continuation characters with macroinstructions. Appendix A includes job control information.				
UPDATE PACKAGE C	UP-8913-C		133	
Contains corrections to features present in Assembler prior to Release 8.2.				
UPDATE PACKAGE D	UP-8913-D		8	‡
Describes changes to the subroutine linkage discussion.				
ASSEMBLER CODING FORM 8-1/2" x 11" (50 SHEETS/PAD)	UD1-1548	RD		
BASIC Introduction	UP-8801	SLI	20	
Discusses the purpose, use, capabilities, and limitations of OS/3 BASIC. For all levels of users.				
BASIC Program Product Specification	UP-9265.15	SLI	4	
BASIC Programmer Reference	UP-9168 R2	SLI	202	
Describes how an application programmer uses BASIC to write programs. Covers: an overview of BASIC; definition of constants, variables, expressions, and function references; the statements used to code BASIC programs; how to segment programs; file control; commands; programming techniques; error and debugging; and operation in a batch environment.				
UPDATE PACKAGE A	UP-9168 R2-A		40	‡
Provides new BASIC error messages.				

‡ Denotes items added or changed since the last issue of this summary.

TITLE AND DESCRIPTION	DOC. NO.	TYPE	NO. PAGES	STATUS
UPDATE PACKAGE B Describes the BASIC collating sequence and how BASIC handles lowercase characters.	UP-9168 R2-B		26	‡
BASIC Summary An easy-to-reference pocket guide for the experienced applications programmer that contains BASIC logon and logoff procedures, syntax conventions, statement and command formats, and language elements.	UP-9169 R3	SLI	15	
BASIC User Guide Describes for the novice programmer the BASIC programming language and its use. Discusses general language concepts and uses of the language.	UP-9109	SLI	311	‡
BINDER, THREE RING, FOR 8-½" x 4" PAGES, 3/4" RINGS	UP-8430	RD		
BINDER, THREE RING, FOR 8-½" x 4" PAGES, 1-¼" RINGS	UP-8573	RD		
BINDER, THREE RING, FOR 8-½" x 11" PAGES, 3-½" RINGS	UP-8700	RD		
CARD PUNCH, 0608 General Description Describes general functional characteristics, configuration, control operation, operator controls and indicators, physical characteristics, and programming aids. Includes punched card, ASCII, and EBCDIC codes.	UP-8894	SLI	24	
CARD PUNCH, 0608 Media and Expendable Supplies Provides paper card specifications and recommends storage and handling procedures. Includes punch dimensions.	UP-8388	SLI	12	
CARD PUNCH, 0608 Operator Reference Provides a brief functional description of the card punch and its controls and indicators. Describes operating procedures, including diagnostics, operator recovery, clearing card jams, and lamp replacement.	UP-8896 R1	SLI	32	
UPDATE PACKAGE A Changes the disclaimer to include the required FCC warning on device radiation. Also adds information on error messages and recovery procedures for OS/3 users.	UP-8896 R1-A		17	
CARD READER, 0719 General Description Describes general functional characteristics and control operation. Also describes operator controls and indicators and lists physical characteristics.	UP-8619	SLI	12	

‡ Denotes items added or changed since the last issue of this summary.

TITLE AND DESCRIPTION	DOC. NO.	TYPE	NO. PAGES	STATUS
CARD READER, 0719 Media and Expendable Supplies	UP-8390	SLI	12	
Provides specifications of paper cards and recommends storage and handling procedures. Includes punch dimensions.				
CARD READER, 0719 Operator Reference	UP-8617 R1	SLI	24	
Provides operator instructions. Describes the subsystem, lists controls and indicators, gives operator instructions and maintenance procedures, includes error messages and recovery procedures.				
COBOL, 1974 AMERICAN NATIONAL STANDARD Fundamentals	UP-8805	SLI	273	
Is an easy-to-use explanation of 1974 American National Standard COBOL based on the American National Standards Institute COBOL, ANSI X3.23-1974.				
UPDATE PACKAGE A	UP-8805-A		6	
Incorporates a minor change.				
UPDATE PACKAGE B	UP-8805-B		7	
Incorporates a minor change.				
COBOL, 1974 AMERICAN NATIONAL STANDARD Introduction	UP-8804 R1	SLI	27	
Discusses the purpose, use, capabilities, and limitations of 1974 ANS COBOL. For all levels of users.				
COBOL, 1974 AMERICAN NATIONAL STANDARD Program Product Specification	UP-9265.13	SLI	4	
COBOL, 1974 AMERICAN NATIONAL STANDARD Programmer Reference	UP-8613 R2	SLI	413	
Describes 1974 ANS COBOL for the applications programmer. Covers: COBOL character set; data types; character strings; method of reference; the statements permitted in each COBOL division; and statements pertaining to table handling, file processing, sort/merge, library, debugging, interprogram communication, and communications.				
UPDATE PACKAGE A	UP-8613 R2-A		39	
Provides additional information for OS/3 Release 8.0 on the RESERVE clause and OCCURS DEPENDING clause. Some expanded descriptions are provided that pertain to features present in 1974 ANS COBOL prior to Release 8.0.				
UPDATE PACKAGE B	UP-8613 R2-B		83	
Provides the following for Release 8.2: additional names for the SOURCE_COMPUTER, OBJECT_COMPUTER, and SPECIAL_NAMES paragraphs; information about size of COMPUTATIONAL items in a PICTURE character string; additional information on the procedure division storage map listings; and additional reserved words.				

TITLE AND DESCRIPTION	DOC. NO.	TYPE	NO. PAGES	STATUS
UPDATE PACKAGE C Includes information on the compilation summary listing and updates the procedure call statement for the job control stream requirements.	UP-8613 R2-C		42	‡
COBOL, 1974 AMERICAN NATIONAL STANDARD Summary Provides a quick-look reference for the experienced COBOL applications programmer. Covers: character set; efficiency considerations; statement formats; constants, symbols, expressions, operators, and reserved words; PARAM statement options and checks; the COBL74 jproc; and rules for moving, data item relationships, and PICTURE formatting.	UP-8612 R3	SLI	48	
UPDATE PACKAGE A Provides the following for Release 8.2: additional names for the SOURCE_COMPUTER, OBJECT_COMPUTER, and SPECIAL_NAMES paragraphs; and additional reserved words.	UP-8612 R3-A		13	
COBOL EDITOR User Guide/Programmer Reference For users prior to Release 8.2, describes, for both the novice and experienced programmer, the use of the COBOL editor. Enables the programmer to interactively create and modify COBOL source programs.	UP-9106	SLI	157	
COBOL EDITOR (COBEDT) User Guide/Programmer Reference Supersedes UP-9106 for System 80 users of OS/3 Release 8.2 forward. Includes corrections or clarifications applicable to features present in OS/3 prior to Release 8.2.	UP-9974	SLI	168	
COBOL EDITOR, 1974 AMERICAN NATIONAL STANDARD, TYPE NUMBER: 6222-XX Program Product Specification	UP-9265.41	SLI	4	
COBOL PROGRAM FORM 11" x 16" (50 SHEETS/PAD)	UD1-905	RD		
CONSOLIDATED DATA MANAGEMENT Concepts and Facilities For users prior to Release 8.2, provides, for the system administrator and programmer, an overview of what consolidated data management is and how it handles the movement of data between peripheral devices and programs. Also describes the organization of data files under OS/3, the formats of the different types of data files, and discusses programming considerations for each type of data file.	UP-8825 R1	SLI	122	
UPDATE PACKAGE A Adds new features for OS/3 Release 8.0: ACCESS option (ACCESS=UCP) provides read/write access of the specified file with no restrictions; supports RCFM, BKSZ, RCSZ, KLEN, KLOC, INDS, REWIND, OPRW, CLRW, FILABL, and TPMARK keyword specifications for the //DD job control statement.	UP-8825 R1-A		24	

‡ Denotes items added or changed since the last issue of this summary.

TITLE AND DESCRIPTION	DOC. NO.	TYPE	NO. PAGES	STATUS
UPDATE PACKAGE B	UP-8825 R1-B		14	
Documents, for OS/3 Release 8.1, a method for obtaining accelerated file access. Includes corrections or expanded descriptions applicable to features present in consolidated data management prior to Release 8.1.				
CONSOLIDATED DATA MANAGEMENT Introduction	UP-8824	SLI	21	
Describes, in easy-to-understand language, how data is moved between peripheral devices and main storage, and how consolidated data management simplifies the programmer's interaction with the process.				
CONSOLIDATED DATA MANAGEMENT Concepts and Facilities	UP-9978	SLI	127	
Supersedes UP-8825 for System 80 users starting with Release 8.2. Includes a description of the 8470 disk subsystem, which is new for Release 8.2.				
CONSOLIDATED DATA MANAGEMENT MACROINSTRUCTIONS User Guide/Programmer Reference	UP-8826 R1	SLI	185	
For users prior to Release 8.2, describes, for the experienced assembler programmer, the macroinstructions used by consolidated data management, which are used in assembly language programs to define data files and manage the movement of data to and from those files.				
CONSOLIDATED DATA MANAGEMENT MACROINSTRUCTIONS User Guide/Programmer Reference	UP-9979	SLI	184	
Supersedes, for System 80 users, UP-8826. Is essentially the same except for references to the 8470 disk subsystem, which is new for Release 8.2 of OS/3. Includes corrections or clarifications applicable to features present in OS/3 prior to Release 8.2.				
DATA BASE MANAGEMENT SYSTEM (DMS) Introduction	UP-8808	SLI	24	
Discusses the purpose, use, capabilities, and limitations of DMS. For all levels of users.				
DATA MANAGEMENT SYSTEM (DMS) Program Product Specification	UP-9265.9	SLI	6	
DATA BASE MANAGEMENT SYSTEM (DMS) Summary	UP-9009 R4	SLI	51	
A quick-reference summary for the experienced applications programmer. Covers: processor and utilities DUPL syntax; jprocs; DDL, DML, and DMCL statement formats; error status and rollback error codes; reserved words; and conversational data base manipulation language formats.				

TITLE AND DESCRIPTION	DOC. NO.	TYPE	NO. PAGES	STATUS
DATA BASE MANAGEMENT SYSTEM (DMS) DATA DESCRIPTION LANGUAGE User Guide/Programmer Reference	UP-8022 R5	SLI	112	
Describes the schema and subschema data definition language (DDL) used to logically define a data base (schema) and to logically define subsets (subschemas) of the data base of interest to particular application programmers. Also describes the device media control language (DMCL) used to physically define a data base. A prerequisite to use of other DMS manuals. Defines language character set, words, organization, and coding form. Provides lists of reserved words and restricted data and procedure names. Includes information about the indexed location mode.				
DATA BASE MANAGEMENT SYSTEM (DMS) DATA MANIPULATION LANGUAGE User Guide/Programmer Reference	UP-8036 R5	SLI	210	
Provides the information applications programmers need to develop COBOL programs that access a data base. Contains an overview of the OS/3 data base management system (DMS). Covers: the data manipulation language (DML) used to write the programs; data structure and manipulation concepts; programming strategy; error recovery techniques; and indexed location mode.				
UPDATE PACKAGE A	UP-8036 R5-A		24	‡
Incorporates minor corrections for Release 8.1.				
DATA BASE MANAGEMENT SYSTEM (DMS) SYSTEM SUPPORT FUNCTIONS User Guide/Programmer Reference	UP-8272 R4	SLI	219	
Describes how to create, establish, and maintain a data base. For the data base administrator who must set up and maintain a data base. Covers: system generation considerations; data base creation and loading; lock operation; data base start-up and shutdown; checkpoint statistics; data base recovery; report and statistics utilities; data base and journal file formats; and data dictionary storage requirements. Also describes the conversational data manipulation language utility program (CDML) and the CDML commands.				
UPDATE PACKAGE A	UP-8272 R4-A		100	
For Release 8.1, adds information about the indexed location mode. Includes: ACTIVATE WRITE VERIFY statement; PRINT directory, index, and data page command; PRINT space inventory report command; UPDATE space inventory command; index directory page and index page formats; index structure; and space inventory report.				

‡ Denotes items added or changed since the last issue of this summary.

TITLE AND DESCRIPTION	DOC. NO.	TYPE	NO. PAGES	STATUS
DATA BASE MANAGEMENT SYSTEM (DMS) SYSTEM SUPPORT FUNCTIONS User Guide/Programmer Reference	UP-10870	SLI	235	‡
Describes for the data base administrator, DMS system support utilities, DMS utility processor language commands executing DMS components, and DMS recovery procedures. Replaces UP-8272 for System 80 users for Release 9.0 and forward.				
DATA UTILITIES Introduction	UP-8833	SLI	16	
Describes, in easy-to-understand language, how the data utilities perform various file maintenance and reproduction chores. Describes the use of data utilities in batch and interactive environments.				
DATA UTILITIES User Guide/Programmer Reference	UP-8834 R2	SLI	136	
Provides, for both novice and experienced programmers, information necessary to use the data utilities. Data utilities are used for reproducing and maintaining data files on disks, diskettes, and tapes. Explains how to execute data utilities interactively and as a batch job.				
UPDATE PACKAGE A	UP-8834 R2-A		27	
Documents the // PARAM DTE statement, which is a new data utilities feature for Release 8.2.				
DATAPAC PUBLIC DATA NETWORK (PDN) SUPPORT TYPE NUMBER: 6248-XX (CANADIAN) Program Product Specification	UP-9265.35	RD	4	
DATEX-L PUBLIC DATA NETWORK (PDN) Program Product Specification	UP-9265.2	RD	4	
DATEX-P PDN SUPPORT SYSTEM ENHANCEMENT E8B See SYSTEM ENHANCEMENTS.	UP-9280.4	SLI	17	
DATEX-P PDN SUPPORT SYSTEM RELEASE ANNOUNCEMENT E8G See SYSTEM RELEASE ANNOUNCEMENTS.	UP-9280.7	SLI	12	
DATEX-P PUBLIC DATA NETWORK (PDN) SUPPORT TYPE NUMBER: 6248-XX (GERMAN) Program Product Specification	UP-9265.34	RD	4	
DCA TERMINATION SYSTEMS Program Product Specification	UP-9265.31 R2	SLI	2	
DDP FILE ACCESS FACILITY, TYPE NUMBER: 6229-XX Program Product Specification	UP-9265.44 R2	SLI	4	
DDP TRANSFER FACILITY, TYPE NUMBER: 6229-XX Program Product Specification	UP-9265.30 R2	SLI	6	
DDX-P PUBLIC DATA NETWORK (PDN) SUPPORT TYPE NUMBER: 6248-XX (JAPANESE) Program Product Specification	UP-9265.37	RD	4	

‡ Denotes items added or changed since the last issue of this summary.

TITLE AND DESCRIPTION	DOC. NO.	TYPE	NO. PAGES	STATUS
DIALOG PROCESSOR Introduction	UP-8857	SLI	16	
Describes, in easy-to-understand language, the OS/3 dialog processor and how it enables system programmers to develop actual dialogs through which users can interact with the OS/3 operating system and its components.				
DIALOG PROCESSOR User Guide/Programmer Reference	UP-8858 R1	SLI	39	
Provides the experienced programmer with information on the dialog processor, which is the interface between the dialog (written in the dialog specification language) and the application program using the dialog.				
DIALOG SPECIFICATION LANGUAGE User Guide/Programmer Reference	UP-8806	SLI	234	
Describes the purpose and use of the dialog specification language. For applications programmers. Explains the declarations and commands that comprise the language and how they are used to write programs that produce interactive dialogs. Also covers basic dialog concepts, coding rules, and how to execute the dialog specification language translator.				
UPDATE PACKAGE A	UP-8806-A		49	
Includes, for OS/3 Release 7.1, // PARAM BACK STROKE and // PARAM RIGHT BRACKET parameters. Also includes corrections and expanded descriptions applicable to the dialog specification language prior to Release 7.1.				
UPDATE PACKAGE B	UP-8806-B		43	
Incorporates minor corrections for Release 8.0: nested COPY commands; compile bigger dialogs; and output command.				
DIRECT CONNECTION MODULE, 8610 Deinstallation and Repacking Guide	UP-9361	SLI	11	
Contains instructions for deinstalling and repacking the 8610 direct connection module (DCM) including the power cable.				
DISK, 8417 General Description	UP-8916 R1	SLI	23	
Describes the general characteristics and capabilities of the 8417 disk subsystem and summarizes the minimal procedures required by the operator.				
DISK, 8417 Operator Reference	UP-8917 R1	SLI	18	
Describes the procedures required by an operator of the 8417 disk drive. Describes operator controls and indicators and summarizes the subsystem operating principles.				

TITLE AND DESCRIPTION	DOC. NO.	TYPE	NO. PAGES	STATUS
UPDATE PACKAGE A	UP-8917 R1-A		9	
Provides a caution to ensure the integrity of disk files when system power is turned off.				
UPDATE PACKAGE B	UP-8917 R1-B		5	
Changes the disclaimer to include the required FCC warning on device radiation.				
DISK, 8419 General Description	UP-8918 R1	SLI	24	
Describes general performance, safety circuits, configurations, drive types, optional features, controls and indicators, physical characteristics, power requirements, commands, and status.				
DISK, 8419 Operator Reference	UP-8919 R1	SLI	26	
Provides a brief functional description of the disk drive and its controls and indicators. Describes operating procedures, including replacing disk packs, unsafe operating conditions causing device check, and safety resets.				
UPDATE PACKAGE A	UP-8919 R1-A		6	
Provides a caution to ensure the integrity of disk files when system power is turned off.				
UPDATE PACKAGE B	UP-8919 R1-B		5	
Changes the disclaimer to include the required FCC warning on device radiation.				
DISK DRIVE, 8470 General Description	UP-10002	SLI	23	
Includes a functional description and operation of the disk drive hardware, configurations available, specifications, operator controls and indicators, interface and power requirements, physical characteristics, and environmental operating requirements.				
DISK DRIVE, 8470 Operator Reference	UP-10004	SLI	25	
Provides information for operating the 8470 disk drive when used with an integrated disk controller or control unit. Includes basic description of major components, as well as illustrations and descriptions of operator controls.				
DISK DRIVES, 8405/8430/8433 Operator Reference	UP-8343 R1	SLI	28	
Provides instructions and procedures for operating the 8405/8430/8433 disk drives.				

TITLE AND DESCRIPTION	DOC. NO.	TYPE	NO. PAGES	STATUS
DISK DRIVES, 8416/8418 General Description	UP-10005	SLI	22	
Includes a description of the disk drive hardware, configurations available, specifications, operator controls, interface requirements, power consumptions, and physical and environmental characteristics.				
DISK DRIVES, 8416/8418 Operator Reference	UP-8361 R1	SLI	23	
Includes operating procedures for 8416 disk drive. Also includes updating information for 8418 disk drive.				
DISKETTE, 8406 General Description	UP-8475	SLI	22	
Describes diskette controls and indicators, configurations, features, operating characteristics, maintenance provisions, and physical characteristics and specifications.				
DISKETTE, 8406, DOUBLE-SIDED General Description	UP-9163	SLI	24	
Describes diskette characteristics, compatibility, controls and indicators, configurations, features, operating characteristics, formats, diskette preparation, drive selection, read and write operation, status reporting, error detection, maintenance, and physical and electrical specifications.				
DISKETTE, 8406, DOUBLE-SIDED Operator's Guide	UP-9164	SLI	27	
Describes the operator's responsibility and provides a brief functional description of the diskette drive and its controls and indicators. Provides instructions for operating the diskette drive, diskette preparation, and handling and storage of diskette media.				
DISKETTE, 8420/8422 General Description	UP-8699 R2	SLI	29	
Describes configuration and optional features, operating specifications, system components, diskette media, recording format, data transfer rate, operator controls and indicators, and physical and electrical characteristics. Describes software control, including the command repertoire, status, and sense.				
DISKETTE, FLEXIBLE, DOUBLE-SIDED Media	UP-9166	SLI	27	
Provides a physical description of double-sided diskette media, handling precautions, and initialization. Includes specifications of physical parameters, track and recording requirements, and electrical characteristics.				
DISKETTE, FLEXIBLE, SINGLE-SIDED Media	UP-8593	SLI	14	
Provides information concerning the general, physical, and magnetic characteristics of the flexible unrecorded single-sided diskette used with diskette drives and associated information processing systems.				

TITLE AND DESCRIPTION	DOC. NO.	TYPE	NO. PAGES	STATUS
DISKETTE SUBSYSTEM, 8406 Operator's Guide	UP-8476	RD	25	
Provides operating instructions for the diskette subsystem exclusive of any host controller; these are intended to supplement specific host-dependent operations.				
DISTRIBUTED DATA PROCESSING Concepts and Facilities	UP-8811 R2	SLI	201	‡
Describes, for the system programmer or site administrator, how Sperry defines distributed data processing, and what products are used to implement that definition. Also describes, in detail, the use of the various distributed data processing program products, including the DDP transfer facility and the DDP file access.				
DISTRIBUTED DATA PROCESSING Introduction	UP-8843	SLI	25	
Describes the DDP file transfer facility, the IMS-DDP transaction facility, and the DDP file access facility, and gives an example showing how these facilities can be used in a DDP network.				
DISTRIBUTED DATA PROCESSING (DDP) SUPPORT SYSTEM ENHANCEMENT E7E See SYSTEM ENHANCEMENTS.	UP-9210.7	SLI	11	
DISTRIBUTED DATA PROCESSING (DDP) SUPPORT SYSTEM RELEASE ANNOUNCEMENT E7E See SYSTEM RELEASE ANNOUNCEMENTS.	UP-9210.6	SLI	9	
DOCUMENTATION RELEASE STATUS, RELEASE 8.1	UP-9068	SLI	41	
Documents restrictions and last-minute changes to the manuals comprising the OS/3 library.				
DUMP ANALYSIS User Guide/Programmer Reference	UP-8837	SLI	91	
For users prior to Release 8.2, discusses, for the system administrator and experienced programmer, the process of analyzing OS/3 dumps. Explains the purpose of various types of dumps, when and how to take them, their formats, and their interpretation. Analyzes a sample dump.				
UPDATE PACKAGE A	UP-8837-A		33	
Contains corrections and clarifications of dump procedures applicable to OS/3 Release 7.0.				
UPDATE PACKAGE B	UP-8837-B		33	
Documents the following changes for OS/3 Release 8.0: suboptions (NOSHARE) and (SELECT) are added to the RV SYSDUMP command to permit dumping selected regions; parameters are added to the SU\$PREP command; storage of the current PSW in the preamble on abnormal termination is described; and low-order main storage areas are defined.				

‡ Denotes items added or changed since the last issue of this summary.

TITLE AND DESCRIPTION	DOC. NO.	TYPE	NO. PAGES	STATUS
DUMP ANALYSIS User Guide/Programmer Reference	UP-9980	SLI	91	
Supersedes, for System 80 users, UP-8837. Essentially the same except for modifications made for Release 8.2 of OS/3. Changes and additions include: new, simplified format to command a system dump; now possible to select SUPERVISOR as a particular region to be dumped; and formats 2 and 3 now provide more optional parameters for system dump execution.				
UPDATE PACKAGE A	UP-9980-A		22	‡
Documents for Release 9.0 the MINI dump and FDD=NO options.				
EASEL, 8-1/2" x 4" FOR USE IN BINDERS UP-8430 AND UP-8573	UP-8573.1	RD		
EDITOR, TYPE NUMBER: 6226-XX Program Product Specification	UP-9265.17	SLI	4	
ESCORT PROGRAMMING LANGUAGE Introduction	UP-8854 R3	SLI	22	
Discusses the purpose, use, capabilities, and limitations of the ESCORT programming language. For all levels of users.				
ESCORT PROGRAMMING LANGUAGE Summary	UP-8856 R4	SLI	21	
An easy-to-reference pocket guide for the experienced ESCORT programmer. Covers: format conventions; language rules; reserved words; statement and command formats; operators; system utility fields; edit codes; and function keys. Also includes UPDATING clause, KEYS parameter, a function key table, expanded descriptions of the function keys, and additional program, structure, and job commands.				
ESCORT PROGRAMMING LANGUAGE User Guide	UP-8855 R3	SLI	427	
Describes how an end user and novice applications programmer use the ESCORT programming language to write programs. Covers: an overview of the ESCORT language; starting and terminating ESCORT sessions; operation in interactive tutorial and interactive program modes; ESCORT commands; defining, creating, and manipulating files; program statements; creating and controlling jobs; and creating custom input/output forms. Documents new ESCORT features for Release 8.1.				
UPDATE PACKAGE A	UP-8855 R3-A		48	‡
Includes for Release 9.0 additional information on: cataloging files; using edit codes; using the change data statement; and using the SELECT DATA statement.				
ESCORT PROGRAMMING LANGUAGE TYPE NUMBER: 6225-XX Program Product Specification	UP-9265.16 R1	SLI	4	
EXTENDED CHANNEL FUNCTIONALITY SYSTEM ENHANCEMENT E7F See SYSTEM ENHANCEMENTS.	UP-9210.11	SLI	9	

‡ Denotes items added or changed since the last issue of this summary.

TITLE AND DESCRIPTION	DOC. NO.	TYPE	NO. PAGES	STATUS
EXTENDED CHANNEL FUNCTIONALITY SYSTEM RELEASE ANNOUNCEMENT E7D See SYSTEM RELEASE ANNOUNCEMENTS.	UP-9210.10	SLI	10	
EXTENDED SYSTEM SOFTWARE (ESS) TYPE NUMBER: 6211-XX Program Product Specification	UP-9265.33	SLI	8	
FILE CATALOGING Concepts and Facilities For users prior to Release 8.2, discusses file cataloging and describes the OS/3 facilities provided for it. For the system administrator or programmers who are authorized to control the use of the system catalog file.	UP-8860 R1	SLI	86	
FILE CATALOGING Concepts and Facilities Supersedes, for System 80, UP-8860. Contains information concerning file cataloging in a System 80 environment only.	UP-9982	SLI	86	
FILE PLACEMENT ANALYZER (FIPLAN) User Guide Describes the OS/3 file placement analyzer (FIPLAN), which provides an easy-to-use mechanism for improving system performance. FIPLAN projects an optimized disk file allocation that allows the user to physically relocate files, resulting in balanced disk loads and reduced seek time.	UP-9731 R1	SLI	38	‡
FILE PLACEMENT ANALYZER (FIPLAN) Program Product Specification	UP-11456	SLI	2	‡
FILE TRANSFER UTILITY (PCTTRAN), SYSTEM ENHANCEMENT See SYSTEM ENHANCEMENTS.	UP-9280.81	SLI	27	‡
FILE TRANSFER UTILITY (PCTTRAN), SYSTEM RELEASE ANNOUNCEMENT See SYSTEM RELEASE ANNOUNCEMENTS.	UP-9280.80	SLI	10	‡
FLOWCHART TEMPLATE AND BOOKLET (REV. 3-73) Contains a plastic flowchart template and instructions on its use.	UD1-723	SLI		
FOLDERS: PRINTOUT AND LISTING FOLDER	UD1-787	RD		
FORMS:				
ASSEMBLER CODING 8-½" x 11" (50 SHEETS/PAD)	UD1-1548	RD		
COBOL PROGRAMMING FORM 11" x 16" (50 SHEETS/PAD)	UD1-905	RD		
FORTRAN PROGRAMMING FORM 8-½" x 14" (50 SHEETS/PAD)	UD1-1156	RD		
KEYPUNCH FORM, GENERAL 11" x 17" (50 SHEETS/PAD)	UD1-1819	RD		
PRINTER, HIGH SPEED, FORMAT SHEET 11" x 16" (50 SHEETS/PAD)	UD1-1108	RD		

‡ Denotes items added or changed since the last issue of this summary.

TITLE AND DESCRIPTION	DOC. NO.	TYPE	NO. PAGES	STATUS
REPORT PROGRAM GENERATOR PRINTER FORMAT CHART R. 3-70 8-½" x 11" (50 SHEETS/PAD)	UD1-1628	RD		
REPORT PROGRAM GENERATOR II CALCULATION SPECIFICATION 11" x 16" (50 SHEETS/PAD)	UD1-1167	RD		
REPORT PROGRAM GENERATOR II CONTROL CARD AND FILE SPECIFICATION 11" x 16" (50 SHEETS/PAD)	UD1-1166	RD		
REPORT PROGRAM GENERATOR II FILE EXTENSION AND LINE CONTROL SPECIFICATION 11" x 16" (50 SHEETS/PAD)	UD1-1170	RD		
REPORT PROGRAM GENERATOR II INPUT FORMAT SPECIFICATION 11" x 16" (50 SHEETS/PAD)	UD1-1164	RD		
REPORT PROGRAM GENERATOR II OUTPUT FORMAT SPECIFICATION 11" x 16" (50 SHEETS/PAD)	UD1-1165	RD		
REPORT PROGRAM GENERATOR II TELECOMMUNICATIONS SPECIFICATION 11" x 16" (50 SHEETS/PAD)	UD1-1171	RD		
SOFTWARE USER REPORT (SUR) 5-PART FORM	UD1-745	SLI		
TECHNICAL QUESTIONS, QUESTION AND ANSWER FORM 8-½" x 11" (50 SHEETS/PAD)	UD1-1195	RD		
FORTRAN, FUNDAMENTALS OF Programmer Reference	UP-7536 R1	SLI	182	
Describes FORTRAN based on American National Standards Institute FORTRAN X3.9-1966.				
UPDATE PACKAGE A	UP-7536 R1-A		17	
Provides corrections to the DO, FORMAT, EQUIVALENT, FUNCTION, and COMMON statements.				
UPDATE PACKAGE B	UP-7536 R1-B		6	
Corrects a preparation error to page 6-24.				
UPDATE PACKAGE C	UP-7536 R1-C		6	
Incorporates minor corrections to the manual.				
UPDATE PACKAGE D	UP-7536 R1-D		27	
Incorporates minor corrections to the manual.				
UPDATE PACKAGE E	UP-7536 R1-E		6	
Incorporates a minor change to the manual.				
FORTRAN PROGRAMMING FORM 8½" x 14" (50 SHEETS/PAD)	UD1-1156	RD		

TITLE AND DESCRIPTION	DOC. NO.	TYPE	NO. PAGES	STATUS
FORTRAN IV Introduction	UP-8813	SLI	17	
Discusses the purpose, use, capabilities, and limitations of FORTRAN IV. For all levels of users.				
FORTRAN IV Program Product Specification	UP-9265.14	SLI	4	
FORTRAN IV Programmer Reference	UP-8814	SLI	230	
Describes how an applications programmer uses FORTRAN IV to write programs. Covers: overview of FORTRAN IV; program structure; coding form; character set; data types; FORTRAN IV statement formats; functions and subroutines; input/output formatting and control; program debugging; and compilation, linking, and execution of FORTRAN IV programs.				
UPDATE PACKAGE A	UP-8814-A		20	
Includes changes to the job control procedure for OS/3 Release 7.1: specification of catalog files; and expanded explanation of parameters.				
UPDATE PACKAGE B	UP-8814-B		33	
Incorporates minor changes for OS/3 Release 8.0 and describes the // PARAM ERRFIL parameter for using the error file processor with FORTRAN IV.				
UPDATE PACKAGE C	UP-8814-C		6	
Adds information about the PRNTR parameter.				
UPDATE PACKAGE D	UP-8814-D		9	
Includes the addition of X as an options argument and incorporates a rule for using the IN parameter of the FOR4L and FOR4LG jprocs.				
UPDATE PACKAGE E	UP-8814-E		18	‡
Explains the use of a FORTRAN interface routine for making FORTRAN IV mathematical functions available to programs written in other languages; describes how to determine job size.				
FORTRAN IV Summary	UP-8815	SLI	63	
A quick look-up summary for the experienced FORTRAN IV applications programmer. Covers: statement formats; data types; expression modes and evaluation; syntax conventions; format codes; standard functions and subroutines; and how to compile, link, and execute programs.				

‡ Denotes items added or changed since the last issue of this summary.

TITLE AND DESCRIPTION	DOC. NO.	TYPE	NO. PAGES	STATUS
UPDATE PACKAGE A Includes, for OS/3 Release 8.0, the // PARAM ERRFIL parameter for using the error file processor with FORTRAN IV.	UP-8815-A		6	
GENERAL EDITOR (EDT) Introduction Describes, in easy-to-use language, the features and capabilities of the OS/3 general editor. Describes how to use the general editor and the many tasks it can perform for the OS/3 programmer.	UP-8827	SLI	21	
GENERAL EDITOR (EDT) User Guide/Programmer Reference For users prior to Release 8.2, describes the commands and procedures needed to use the OS/3 general editor. Can be used to create and modify library modules and data files interactively from a workstation. Can also copy and concatenate files using the general editor. For all levels of users.	UP-8828 R2	SLI	270	
UPDATE PACKAGE A Provides the following EDT features for OS/3 Release 8.0: clarification of workstation displays in screen mode; clarification of the use of variables; recommendation for using the ROLL screen command only at workstations with the field-protect feature; explanation of headers and error message areas on screens displayed by EDT screen commands.	UP-8828 R2-A		101	
GENERAL EDITOR (EDT) User Guide/Programmer Reference Supersedes UP-8828 for System 80 users starting with Release 8.2. Includes revised screen formats used for updating a MIRAM data file in screen mode.	UP-9976	SLI	273	
UPDATE PACKAGE A Contains the following new EDT features for Release 9.0: SAVEFILE and AUTOSAVE; SCREEN UPPER and SCREEN LOWER system commands.	UP-9976-A		135	‡
HARDWARE AND SOFTWARE Summary A quick-reference manual intended for use by the experienced programmer when detecting hardware errors and performing dump analysis. Summarizes machine instructions, supervisor related information, physical input/output control system (PIOCS) information, and I/O sense data byte definitions.	UP-8868 R2	SLI	391	‡
IBERPAC PUBLIC DATA NETWORK SUPPORT Program Product Specification	UP-9265.52	SLI	4	‡

‡ Denotes items added or changed since the last issue of this summary.

TITLE AND DESCRIPTION	DOC. NO.	TYPE	NO. PAGES	STATUS
IBM SYSTEM/3 TO OS/3 CONVERSION Introduction Describes, in easy-to-understand language, the process of converting from an IBM System/3 data processing system to OS/3. Includes brief descriptions of the utility programs available to ease the conversion process.	UP-8864	SLI	16	
IBM SYSTEM/3 TO OS/3 CONVERSION Introduction Describes, in easy-to-understand language, the process of converting from an IBM System/3 data processing system to OS/3. Includes brief descriptions of the utility programs available to ease the conversion process.	UP-8864	SLI	16	
IBM SYSTEM/32-SYSTEM/34 TO SYSTEM 80 TRANSITION Introduction Describes, in easy-to-understand language, the process of converting from an IBM System/32 or System/34 data processing system to OS/3. Summarizes the features of OS/3 that make it compatible with System/32-34 software and briefly describes the utility programs available to aid in the conversion.	UP-8987	SLI	24	
IBM 3270 EMULATOR SYSTEM RELEASE ANNOUNCEMENT See SYSTEM RELEASE ANNOUNCEMENTS.	UP-9280.3	SLI	10	
IBM 3270 EMULATOR, TYPE NUMBER: 6247-XX Program Product Specification	UP-9265.43 R1	SLI	4	
IBM 3270 REMOTE TERMINAL HANDLER Program Product Specification	UP-9265.1 R2	SLI	4	
ICAM TERMINAL SUPPORT FACILITY Program Product Specification	UP-9265.21 R1	SLI	4	
IMS - MULTITHREAD Program Product Specification	UP-9265.8	SLI	6	
IMS - SINGLE THREAD Program Product Specification	UP-9265.7	SLI	6	
IMS-DDP TRANSACTION FACILITY (MULTITHREAD), TYPE NUMBER: 6229-XX Program Product Specification	UP-9265.45	SLI	2	
IMS-DDP TRANSACTION PROCESSING SYSTEM ENHANCEMENT E8A See SYSTEM ENHANCEMENTS.	UP-9280.10	SLI	12	
IMS-DDP TRANSACTION PROCESSING SYSTEM RELEASE ANNOUNCEMENT See SYSTEM RELEASE ANNOUNCEMENTS.	UP-9280.9	SLI	10	

‡ Denotes items added or changed since the last issue of this summary.

TITLE AND DESCRIPTION	DOC. NO.	TYPE	NO. PAGES	STATUS
INDEPENDENT SORT/MERGE User Guide/Programmer Reference	UP-8819 R2	SLI	133	
A quick-reference manual for the experienced programmer. Describes the structure of the independent sort/merge utility, the statements the programmer uses to create sort specifications, and information on running the sort/merge utility.				
UPDATE PACKAGE A	UP-8819 R2-A		8	‡
For Release 9.0, includes changes to program restrictions and considerations, and comparison of transfer rates for magnetic tape devices.				
INDEX AND PUBLICATIONS GUIDE	UP-8874 R1	SLI	117	
Lists the types of publications available and includes their use, maintenance, and ordering procedures. Contains a complete cross-reference index of the subjects covered in the OS/3 library and a glossary of terms peculiar to System 80.				
INDEX TABS, SYSTEM 80	UP-8997	SLI	86	
A set of index tabs for insertion in binders holding documentation. Organize documentation library and ease referencing particular books.				
INFORMATION MANAGEMENT SYSTEM (IMS) Concepts and Facilities	UP-9205	SLI	213	
Provides a general description of IMS and its features for an applications programmer. Covers: general overview; the IMS environment; action programming; generating IMS; starting and ending IMS sessions; file handling; IMS and DDP; IMS access of DMS files; batch processing of transactions; defined record management; UNIQUE; and various utilities such as continuous output, output-for-input, snapshot dump, downline loading, etc.				
UPDATE PACKAGE A	UP-9205-A		101	
Clarifies and expands descriptions of IMS terminology.				
UPDATE PACKAGE B	UP-9205-B		54	
Includes a new IMS feature called the printer file processor that allows a user to print output from action programs using printer files defined at configuration time. Also contains additional processing considerations for operators who use IMS at a console.				
UPDATE PACKAGE C	UP-9205-C		20	‡
Adds information from SURs and user comments.				
UPDATE PACKAGE D	UP-9205-D		23	‡
Adds guidelines from the 8.2 software release description.				

‡ Denotes items added or changed since the last issue of this summary.

TITLE AND DESCRIPTION	DOC. NO.	TYPE	NO. PAGES	STATUS
INFORMATION MANAGEMENT SYSTEM (IMS) Introduction	UP-8816	SLI	23	
Discusses the purpose, use, capabilities, and limitations of IMS. For all levels of users.				
INFORMATION MANAGEMENT SYSTEM (IMS) Terminal Users Guide	UP-9208	SLI	151	
Describes how a terminal operator enters and receives messages at terminals. Covers: entering messages; standard terminal commands; transaction codes; master terminal commands; and error messages. Information for the IMS administrator included.				
UPDATE PACKAGE A	UP-9208-A		18	
Provides the following changes for OS/3 Release 8.0: MORE unique command now includes the SHOW verb (MORE SHOW); messages for console processing; and ZMCH can be entered from an operating master terminal to designate a new one.				
UPDATE PACKAGE B	UP-9208-B		31	
Describes the BRKPT transaction code, which breakpoints user-defined printer files and releases any assignment locks; can be issued from the master terminal or from any IMS terminal.				
UPDATE PACKAGE C	UP-9208-C		14	‡
Adds information from SURs and user comments. Adds guidelines from the 8.2 software release description.				
INFORMATION MANAGEMENT SYSTEM (IMS) ACTION PROGRAMMING IN COBOL AND BASIC ASSEMBLY LANGUAGE (BAL) User Guide	UP-9207	SLI	562	
Describes how an applications programmer can write IMS action programs in COBOL and BAL. Covers: interface with IMS; handling input messages; processing data files; generating and sending output messages; how to use screen format services; calling subprograms; operating in a DDP environment; various utilities such as downline loading, line disconnect; how to compile, link, and store action programs; error diagnostics; and how to debug action programs.				
UPDATE PACKAGE A	UP-9207-A		59	
Adds new class and reason codes returned to the input message area after unsuccessful remote transactions; applicable to OS/3 Release 8.0.				
UPDATE PACKAGE B	UP-9207-B		45	
Describes three new function calls: PRINT; UNLOCK for printer files; and BRKPT, which assign and control printing of user-defined printer files, release them, and control spooled output from them.				

‡ Denotes items added or changed since the last issue of this summary.

TITLE AND DESCRIPTION	DOC. NO.	TYPE	NO. PAGES	STATUS
UPDATE PACKAGE C	UP-9207-C		43	
Provides the following: additional clarification of the input message text description; additional considerations for the SEND function; information concerning the PRINT and BRKPT function calls; and additional detailed status code for internal message control errors.				
UPDATE PACKAGE D	UP-9207-D		13	‡
Adds information from SURs and user comments. Adds guidelines from the 8.2 software release description.				
INFORMATION MANAGEMENT SYSTEM (IMS) ACTION PROGRAMMING IN RPG II User Guide	UP-9206	SLI	289	
Describes how an applications programmer writes IMS action programs in RPG II. Covers: general rules for coding RPG II action programs; assessing RPG II/IMS interface areas; handling input messages; creating and sending output messages; using internal subroutines; using screen format services; multiple output; output-for-input; continuous output; output with message switching; operating in a DDP environment; compiling, linking, and storing programs; debugging action programs; error codes; and coding restrictions.				
UPDATE PACKAGE A	UP-9206-A		8	
Provides guidelines for defining the program information block and buffer size for local workstations.				
UPDATE PACKAGE B	UP-9206-B		16	‡
Expands the description of CALL SEND for output-for-input queueing and documents a restriction in using a screen bypass device.				
UPDATE PACKAGE C	UP-9206-C		35	‡
Includes for Release 9.0 an expanded description for configuring the work area when using screen format services and for using multikey MIRAM files.				
INFORMATION MANAGEMENT SYSTEM (IMS) DATA DEFINITION AND UNIQUE User Guide	UP-9209	SLI	175	
Describes how the applications programmer uses defined record management and UNIQUE to create and access new data files from existing data files. Covers: defined file structure; how to write data definitions; the data definition processor; reserved words; error diagnostics; and the UNIQUE commands.				
UPDATE PACKAGE A	UP-9209-A		25	
Discusses the MORE SHOW command of the UNIQUE package for OS/3 Release 8.0.				
UPDATE PACKAGE B	UP-9209-B		6	‡
Adds information from SURs and user comments. Adds guidelines from the 8.2 software release description.				

‡ Denotes items added or changed since the last issue of this summary.

TITLE AND DESCRIPTION	DOC. NO.	TYPE	NO. PAGES	STATUS
INFORMATION MANAGEMENT SYSTEM (IMS), SYSTEM SUPPORT FUNCTIONS User Guide	UP-8364 R7	SLI	303	
Describes how to configure and generate IMS. For the site administrator who must set up and maintain IMS. Covers: system generation considerations; generating the integrated communications access method (ICAM) symbiont; preparation for and configuration of IMS; initiating and terminating IMS; and data file recovery.				
UPDATE PACKAGE A	UP-8364 R7-A		44	
Includes for OS/3 Release 8.0: COBOL subprograms must be configured as serially reusable; IMS shutdown cannot be performed from the console unless it is the master terminal; main storage requirements for IMS utility programs.				
Other corrections apply to features prior to OS/3 Release 8.0.				
UPDATE PACKAGE B	UP-8364 R7-B		90	
Includes for OS/3 Release 8.1: printer files can be defined in COBOL or BAL action programs in multithread configurations; printer files are specified in the configurator FILE section after all other user-defined files; multithread configurations support more than one master terminal; STATFIL is optional for multithread configurations when subparameter 6 of the INIT keyword parameter is specified as NO.				
UPDATE PACKAGE C	UP-8364 R7-C		25	‡
Adds information from SURs and user comments, and adds guidelines from the 8.2 software release description.				
UPDATE PACKAGE D	UP-8364 R7-D		42	‡
Incorporates items from SURs and the system release description.				
INFORMATION MANAGEMENT SYSTEM (IMS) TO DMS INTERFACE User Guide	UP-8748 R1	SLI	107	
Describes how an applications programmer can use IMS to access DMS files. Includes IMS/DMS preparation, start-up, and shutdown; transaction processing; writing DML/COBOL action programs, using defined record management to access DMS files; and file recovery. Contains a complete example.				
UPDATE PACKAGE A	UP-8748 R1-A		23	
Describes for OS/3 Release 8.0: DMS support of multiple IMS systems; shutting down DMS before IMS; rollback error codes returned to IMS by DMS; and support for multithread IMS in System 80.				
UPDATE PACKAGE B	UP-8748 R1-B		30	
Changes references to other IMS documents and expands descriptions applicable to the software prior to Release 8.0.				

‡ Denotes items added or changed since the last issue of this summary.

TITLE AND DESCRIPTION	DOC. NO.	TYPE	NO. PAGES	STATUS
INPUT/OUTPUT MICROPROCESSOR - SYSTEM 80 Programmer Reference Provides detailed hardware-oriented information to program device channels, communications devices, single-line communications adapters, communications multiplexer, and universal data link controller.	UP-8909	RD	220	
INSTALLATION VERIFICATION PROCEDURES User Guide/Programmer Reference For users prior to Release 8.2, describes the procedures used by the system administrator to verify that OS/3 software products are properly installed and ready for use. Each procedure lists the execution requirements, operating instructions, expected verification status, and error handling techniques for installation verification. Run at the conclusion of software installation or whenever a new software product is installed.	UP-8820 R2	SLI	222	
UPDATE PACKAGE A Includes for OS/3 Release 8.0: the new IVPX21; ISCSER ONUERL messages; IVPESC command 10 changed to command 12; IVP RTP release pack messages; and IVP MUG menu changes.	UP-8820 R2-A		29	
INSTALLATION VERIFICATION PROCEDURES User Guide/Programmer Reference Supersedes, for System 80 users, UP-8820. Essentially the same except for deletion of features and references applicable to Series 90 system.	UP-10003	SLI	171	
INTEGRATED COMMUNICATIONS ACCESS METHOD (ICAM) Concepts and Facilities For users prior to Release 8.2, provides an overview of ICAM for the applications programmer. Also of interest to site administrators planning communications systems. Covers: structure and capabilities of ICAM; line and terminal support; buffers and queues; message processing procedure specifications (MPPS); global networks; reporting and journaling facilities; coding conventions; and a listing of all ICAM statements and macroinstructions cross-referenced to the manual in which they are described. Enhancements to ICAM for OS/3 Release 8.0 include: IBM 3270 emulator support; OS/3 remote terminal processor; public data network support; new SLCAs; and DCA multinode support.	UP-8194 R7	SLI	233	
UPDATE PACKAGE A Improves the description of the OS/3 remote terminal processor (RTP) for OS/3 Release 8.0.	UP-8194 R7-A		6	
UPDATE PACKAGE B Describes support for the SPERRY Universal Terminal System 4040 (UTS 4040) Cluster Controller, new system activity monitor (SAM) functions (CPOL and DBYT), and the ICAM edit dump (IED) utility.	UP-8194 R7-B		48	

TITLE AND DESCRIPTION	DOC. NO.	TYPE	NO. PAGES	STATUS
INTEGRATED COMMUNICATIONS ACCESS METHOD (ICAM) Concepts and Facilities	UP-9744	SLI	210	
Supersedes UP-8194 for System 80 users starting with OS/3 Release 8.2. Guides you in programming and using ICAM.				
INTEGRATED COMMUNICATIONS ACCESS METHOD (ICAM) Introduction	UP-8846 R1	SLI	51	
Provides an introduction to ICAM, which is the OS/3 communications software that allows remote terminals and workstations to communicate with the central processor.				
Describes: information management system (IMS); distributed data processing (DDP); interactive programming; how ICAM handles remote devices; public data networks (PDNs); and distributed communications architecture.				
INTEGRATED COMMUNICATIONS ACCESS METHOD (ICAM) Programmer Reference	UP-8269 R7	SLI	502	
For users prior to Release 8.2, a quick reference of essential ICAM information for applications programmers familiar with ICAM. Covers: defining the communications network; the macroinstructions available with each interface to write communications user programs; the message processing procedure specification (MPPS) macroinstructions; the various communication utilities (IDES, NTR, CMCS, RBP, etc); operating procedures; cancel and error codes; operating procedures; and the error conditions and tables associated with each ICAM interface.				
UPDATE PACKAGE A	UP-8269 R7-A		61	
Provides changes to ICAM network definition macroinstructions for OS/3 Release 8.0.				
UPDATE PACKAGE B	UP-8269 R7-B		79	
Includes, for OS/3 Release 8.1, changes to the ICAM CCA, LINE, TERM, and VLINE macroinstructions, which include expanded support of the UTS 4020 and 4040 cluster controllers and the UTS 400 terminal. Contains expanded RTP coverage to include operations between RTP and the IBM host.				
INTEGRATED COMMUNICATIONS ACCESS METHOD (ICAM) Programmer Reference	UP-9749	SLI	467	
Supersedes UP-8269 for System 80 users starting with Release 8.2. Summarizes information found in the other ICAM manuals. Covers all statements, commands, and macroinstructions used in preparing network definitions and communications user programs and in running ICAM utilities. Intended as a quick reference manual for those familiar with ICAM.				
UPDATE PACKAGE A	UP-9749-A		66	‡
Describes the following enhancements for OS/3 Release 9.0: addition of X.21 circuit-switched public data networks for connection to UTS 20X; additional capabilities for the ICAM trace facility; input journaling for remote workstations; how to specify single- or dual-screen remote workstations.				

‡ Denotes items added or changed since the last issue of this summary.

TITLE AND DESCRIPTION	DOC. NO.	TYPE	NO. PAGES	STATUS
INTEGRATED COMMUNICATIONS ACCESS METHOD (ICAM), COMMUNICATIONS PHYSICAL INTERFACE (CPI) User Guide For users prior to Release 8.2, describes how an experienced communications applications programmer uses the ICAM communications physical interface to write a communications program at the physical level. Discusses loading the communications adapter, chaining control packets, obtaining diagnostics and CPIOCS trace tables, reading communications adapter words and tables, using automatic input buffering, and summarizes SLCA features.	UP-8945 R1	RD	140	
UPDATE PACKAGE A Contains expanded descriptions, clarifications, and corrections for the SLCA and communications control packet for OS/3 Release 7.1.	UP-8945 R1-A		60	
UPDATE PACKAGE B Consists of minor additions to System 80 guidelines for the communications physical interface.	UP-8945 R1-B		10	
INTEGRATED COMMUNICATIONS ACCESS METHOD (ICAM) COMMUNICATIONS PHYSICAL INTERFACE (CPI) User Guide Supersedes UP-8945 for System 80 users of OS/3 Release 8.2 forward. Describes the communications physical interface of ICAM and explains how to write a user program at the physical level.	UP-9746	SLI	142	
INTEGRATED COMMUNICATIONS ACCESS METHOD (ICAM), DIRECT DATA INTERFACE (DDI) User Guide Describes how an experienced applications programmer can write a DDI communications program in basic assembly language (BAL). Covers: the macroinstructions used to code the program; message control table fields; special considerations when using DDI; error conditions; screen control; and remote terminal characteristics.	UP-8549 R4	RD	176	
UPDATE PACKAGE A Includes, for OS/3 Release 8.0, a new keyword for the NETREQ macroinstruction and expanded descriptions and corrections for the software prior to release 8.0.	UP-8549 R4-A		66	
INTEGRATED COMMUNICATIONS ACCESS METHOD (ICAM), INTERFACING A REMOTE DEVICE HANDLER Programmer Reference Describes how a systems programmer can interface a remote device handler (RDH) for a nonsupported terminal to ICAM. Starts with a description of handler interfaces, then guides reader in changing a design to one that can handle the nonsupported terminals. Covers: common structure; handler conventions; ICAM and handler interfaces; status codes; console messages; a functional description of interactive and batch handlers; considerations for new handlers; common routines; and the ICAM subroutines and macroinstructions used by handlers.	UP-8424	RD	133	

TITLE AND DESCRIPTION	DOC. NO.	TYPE	NO. PAGES	STATUS
INTEGRATED COMMUNICATIONS ACCESS METHOD (ICAM), MESSAGE PROCESSING PROCEDURE SPECIFICATIONS (MPPS) User Guide Describes how an application programmer can use MPPS to preprocess communications messages. Covers: the interaction of message processing routines with ICAM; the MPPS macroinstructions used to preprocess messages; and examples of message processing routines.	UP-8946	SLI	96	
UPDATE PACKAGE A Provides an expanded description of how to use the JOURN macroinstruction to process message header prefixes, segments, or complete messages for both input and output; applicable to OS/3 Release 7.1.	UP-8946-A		19	
INTEGRATED COMMUNICATIONS ACCESS METHOD (ICAM), NETWORK DEFINITION AND OPERATIONS User Guide For users prior to Release 8.2, describes how an applications programmer creates the ICAM symbiont that supports communications. Covers: the ICAM interfaces and types of networks; how to prepare a network definition; the macroinstructions used to create networks; and how to generate, load, and run ICAM.	UP-8947 R3	SLI	342	‡
INTEGRATED COMMUNICATIONS ACCESS METHOD (ICAM), NETWORK DEFINITION AND OPERATIONS User Guide Supersedes UP-8947 for System 80 users starting with release 8.2. Describes how to define an ICAM network, create a communications symbiont, and start up ICAM terminals.	UP-9745	SLI	332	
UPDATE PACKAGE A Describes for Release 9.0 the addition of an X.21 circuit-switched public data network for connection to a UTS 20X terminal. Defines new operands required to support this configuration.	UP-9745-A		113	‡
INTEGRATED COMMUNICATIONS ACCESS METHOD (ICAM) REMOTE TERMINAL PROCESSOR (RTP) User Guide Describes how an applications programmer can use a SPERRY System 80 as a remote job entry terminal to a large-scale IBM host processor. Covers: an overview of RTP; how to install and generate an RTP system; console commands; sending jobs to the host; establishing communication with host; handling print, punch, and tape files; and diagnostic messages.	UP-8990	SLI	77	

‡ Denotes items added or changed since the last issue of this summary.

TITLE AND DESCRIPTION	DOC. NO.	TYPE	NO. PAGES	STATUS
INTEGRATED COMMUNICATIONS ACCESS METHOD (ICAM) REMOTE TERMINAL PROCESSOR (RTP) User Guide	UP-10047	SLI	80	‡
Discusses how to generate and use RTP to provide remote job entry capabilities for the OS/3 user to IBM host processors. Discusses: concepts, functions, and structure of RTP; installing, generating, and executing RTP; console commands; communicating with the host; and format and structure of RTP messages. Replaces UP-8990 starting with Release 8.2.				
INTEGRATED COMMUNICATIONS ACCESS METHOD (ICAM), STANDARD MCP (STDMCP) INTERFACE User Guide	UP-8550 R5	RD	328	
Describes how an application programmer can write a BAL communications program that employs the standard MCP interface. Covers: an overview of the interface; a description of the macroinstructions used to write the programs; the characteristics of the terminals supported by this interface; control packets; error conditions; and work areas.				
UPDATE PACKAGE A	UP-8550 R5-A		122	
Contains for OS/3 Release 8.0: addition of the GAWAKE parameter list; how to write a dynamic session program; a working example of a dynamic session program; running a dynamic session program via interactive services; and guidelines for using the IBM 3270 emulator.				
UPDATE PACKAGE B	UP-8550 R5-B		47	‡
Contains for OS/3 Release 8.2: output delivery notice request (ODNR); auxiliary device status codes for UTS 4000 devices; enhancement to ICAM's IBM 3270 Emulator.				
INTEGRATED COMMUNICATIONS ACCESS METHOD (ICAM), UTILITIES User Guide	UP-8552 R6	SLI	171	
For users prior to Release 8.2, describes how the applications programmer can use the utility routines provided by ICAM. Covers: the ICAM device emulation system (IDES); remote batch processing (RBP); RPG II telecommunications; the journal utility; the COBOL message control system (CMCS); the ICAM trace facility (ITF); the ICAM edit dump (IED); and how to dump the single line communications adapter.				
INTEGRATED COMMUNICATIONS ACCESS METHOD (ICAM) UTILITIES User Guide	UP-9748	SLI	176	
Supersedes UP-8552 for System 80 users starting with OS/3 Release 8.2. Describes the following ICAM utilities: ICAM device emulation system; remote batch processing; journal utility; COBOL message control system; single-line communications adapter dump routine; ICAM trace facility; and ICAM edit dump. Includes a new format for the operator command to dump the single-line communications adapter and three new fields on the network descriptor card for ICAM IDES.				
UPDATE PACKAGE A	UP-9748-A		29	‡
Incorporates enhancements to ICAM trace facility for OS/3 Release 9.0.				

‡ Denotes items added or changed since the last issue of this summary.

TITLE AND DESCRIPTION	DOC. NO.	TYPE	NO. PAGES	STATUS
INTERACTIVE PROCESSING Introduction	UP-8844 R1	SLI	32	
Discusses, in easy-to-understand language, the growing range of computer users and how different interactive OS/3 products can help them make use of the computing power available through System 80.				
INTERACTIVE SERVICES, COMMANDS AND FACILITIES Summary	UP-8938 R2	SLI	170	
For users prior to Release 8.2, a quick reference that includes commands, information on logon, and ICAM sign-on procedures. Summarizes the general editor commands and how to initialize the various interactive facilities, such as the screen format generator.				
UPDATE PACKAGE A	UP-8938 R2-A		32	
Discusses the following new interactive services features for Release 8.0: ability to downline load a program to a UTS 40 workstation; new formats for the DLOAD command; new parameters on the SCREEN command for specifying where and when your system prints your files; and clarification of the use of the RP command.				
UPDATE PACKAGE B	UP-8938 R2-B		7	
Documents two new parameters for the SCREEN command (PAGE and CONTINUOUS) that support either continuous or page mode printing for the 0791 auxiliary printer.				
INTERACTIVE SERVICES COMMANDS AND FACILITIES Summary	UP-9973	SLI	168	
Supersedes UP-8938 for System 80 users starting with Release 8.2. Includes corrections and clarifications applicable for features present in OS/3 prior to Release 8.2.				
INTERACTIVE SERVICES COMMANDS AND FACILITIES User Guide/Programmer Reference	UP-8845 R3	SLI	254	
For users prior to Release 8.1, describes, for both novice and experienced programmers, the procedures used to communicate interactively through a local workstation or remote terminal with the operating system. Describes the procedures for logging on and off the system, performing various interactive commands, and using various interactive utilities, such as the general editor and job control dialog.				
UPDATE PACKAGE A	UP-8845 R3-A		49	
Discusses the following new interactive services features for OS/3 Release 8.0: ability to downline load a program to a UTS 40 workstation; new formats for the DLOAD command; new parameters on the screen command for specifying where and when the system prints print files; clarification of the use of the RP command.				
UPDATE PACKAGE B	UP-8845 R3-B		24	
Documents, for Release 8.1, two new parameters for the SCREEN command (PAGE and CONTINUOUS), which support either continuous or page mode printing for the 0791 auxiliary printer.				

TITLE AND DESCRIPTION	DOC. NO.	TYPE	NO. PAGES	STATUS
INTERACTIVE SERVICES COMMANDS AND FACILITIES User Guide/Programmer Reference Supersedes UP-8845 for System 80 users starting with Release 8.2. Changes for Release 8.2 include: new section that discusses profiles and profile management; new logon screen and NEW PASSWORD logon parameter; new format for input, output, and unsolicited system messages, and many others.	UP-9972	SLI	293	
I/O INTEGRATED CONTROLLERS Programmer Reference Contains hardware design, operations, and hardware-oriented programming information to assist in programming the peripheral systems integrated with System 80. Describes data transfer methods and commands used among the system processor, main storage, I/O channels, and peripheral devices.	UP-8742 R1	RD	235	
UPDATE PACKAGE A Deletes description of and all references to the intercomputer control unit (ICCU), which is not supported by System 80, models 3 and 5. Discussion added to the 8417, 8419 disk gross data organization regarding the innermost cylinder of both fixed and removable disk media being dedicated for maintenance; any user data written into this area is subject to loss or destruction.	UP-8742 R1-A		34	
JOB CONTROL Introduction Describes, in easy-to-understand language, how job control functions in the OS/3 operating system. Describes the use of job control in batch and interactive environments, and how to create a job control stream interactively.	UP-8821	SLI	28	
JOB CONTROL Programmer Reference For users prior to Release 8.2, a quick-reference document for programmers familiar with the OS/3 job control language. Contains descriptions of job control statements and job control procedures supplied as part of the operating system.	UP-8217 R8	SLI	213	
UPDATE PACKAGE A Contains corrections applicable to features present in job control for OS/3 Release 8.0 and prior releases.	UP-8217 R8-A		20	
JOB CONTROL Programmer Reference Supersedes, for System 80 users, UP-8217. Essentially the same except for changes made for Release 8.2 of OS/3 and for the System 80 model 8. Changes have been made to the following statements and jprocs: DD, EXT, INQ JOB, LCB, LFD, SKIP, SPL, VFB, and COBL74. Also new are the low priority job queue and a new logical unit (lun) table.	UP-9984	SLI	206	

TITLE AND DESCRIPTION	DOC. NO.	TYPE	NO. PAGES	STATUS
UPDATE PACKAGE A Includes, for Release 9.0, changes to disk and diskette subsystem characteristics, DVC statement, JSET statement, EXEC statement, and VFB statement.	UP-9984-A		18	‡
JOB CONTROL User Guide For users prior to Release 8.2, describes the OS/3 job control language - the part of the operating system that manages system resources, prepares programs for execution, and starts program execution. Presents, in two parts, the statements that make up the job control language. First, for basic job control, describes those statements necessary for simple program executions, geared to the needs of the novice programmer. Second, describes the more complex job control statements that allow the experienced programmer wider and more varied control of job processing.	UP-8065 R9	SLI	339	
UPDATE PACKAGE A Contains corrections or clarifications applicable to job control features for OS/3 Release 8.0 and prior releases.	UP-8065 R9-A		32	
JOB CONTROL User Guide Supersedes, for System 80 users, UP-8065. Describes OS/3 Job Control and its use and includes many enhancements applicable to Release 8.2 of OS/3.	UP-9986	SLI	318	
UPDATE PACKAGE A Describes changes to multiple volumes in a file, scratching unwanted files, and 8470 disk subsystem characteristics applicable to Release 9.0.	UP-9986-A		31	‡
KEYPUNCH FORM, GENERAL 11" x 17" (50 SHEETS/PAD)	UD1-1819	RD		
LOCAL WORKSTATION - SYSTEM 80 Operator Reference Provides an operational description of the workstation, 0797 and 0798 printers, and magnetic stripe reader. Illustrates and describes keyboard, controls, and indicators for the workstation. Separately describes keyboard control keys. Describes use of the control page, along with general workstation operating instructions. Includes operating instructions for the printers and magnetic stripe reader.	UP-8910 R1	SLI	83	‡
MAGNETIC TAPE DRIVE, 3782 STREAMING General Description Includes a general functional description of the tape drive capabilities, operating principles, and characteristics. Also includes a brief description of the programming considerations.	UP-9382	RD	19	

‡ Denotes items added or changed since the last issue of this summary.

TITLE AND DESCRIPTION	DOC. NO.	TYPE	NO. PAGES	STATUS
MAGNETIC TAPE DRIVES, UNISERVO 22 AND 24 Operator Reference Provides information for operating the UNISERVO 22 and UNISERVO 24 magnetic tape drives. Includes a general description of operating principles, as well as detailed description of operating controls.	UP-8903 R2	SLI	36	
MAGNETIC TAPE DRIVES, UNISERVO 22 AND 24 Reference Provides programming information used to operate the UNISERVO 22 and UNISERVO 24 tape drives, including information about the formatter.	UP-8902 R1	SLI	60	
MAGNETIC TAPE DRIVES, UNISERVO 26 AND 28 General Description Contains: an introduction to the recording methods, standard and optional features; description of the tape drives control unit and configurations; control and indicator description of the tape drives and control unit; and information about the ASCII/EBCDIC and EBCDIC/ASCII code translator.	UP-10010	SLI	24	
MAGNETIC TAPE DRIVES, UNISERVO 26 AND 28 Operator Reference Provides information and procedures for the operation of the UNISERVO 26 and UNISERVO 28 tape drives. Includes: operator responsibilities; controls and indicators; and operator-performed maintenance.	UP-10009	SLI	42	
MAGNETIC TAPE SUBSYSTEM, 0871 Operator Reference Contains operating instructions and procedures, lists operator controls and indicators, and provides operator maintenance information. Defines operator responsibilities.	UP-8609	SLI	27	
UPDATE PACKAGE A Changes the disclaimer to include the required FCC warning on device radiation.	UP-8609-A		5	
MAGNETIC TAPE SUBSYSTEMS Media Lists the specifications for the magnetic tape and reel assembly used on tape drives, including test prerequisites and cable documents. Covers: physical, magnetic, and quality characteristics; safety and environmental requirements; and tape, reel assembly components, and cartridge information.	UP-8208 R2	SLI	40	‡
MAIN STORAGE SUPPORT, 4-MB SYSTEM ENHANCEMENT E7H See SYSTEM ENHANCEMENTS.	UP-9210.18	SLI	9	
MAIN STORAGE SUPPORT, 4-MB SYSTEM RELEASE ANNOUNCEMENT E7H See SYSTEM RELEASE ANNOUNCEMENTS.	UP-9210.17	SLI	9	

‡ Denotes items added or changed since the last issue of this summary.

TITLE AND DESCRIPTION	DOC. NO.	TYPE	NO. PAGES	STATUS
MAPPER 80 FORMS GENERATION AND UTILITIES User Guide	UP-9736 R1	SLI	168	‡
Describes how to generate report forms and create reports. Also discusses MAPPER 80 utilities and their use, with or without your own code.				
MAPPER 80 MANUAL FUNCTIONS User Guide	UP-9735 R1	SLI	196	‡
Describes MAPPER 80 manual functions and provides examples of their use. Reports used in the examples are from the self-training data base supplied with the MAPPER 80 system; this allows the user to practice the manual functions while using this manual.				
MAPPER 80 SYSTEM OPERATOR AND COORDINATOR User Guide	UP-9737 R2	SLI	107	‡
Describes the following features of the MAPPER 80 software: preparation of job control streams; unsolicited operator commands; system messages; MAPPER 80 coordinator functions; software installation and modification; and data base considerations.				
MAPPER 80 RUN FUNCTIONS User Guide	UP-9734 R1	SLI	140	‡
Describes the MAPPER 80 run functions by providing an overview of what is required for run creation, debugging and registration, and execution. Also explains: conventions and run design considerations, processing reports and results, and workstation operation.				
MAPPER 80 SOFTWARE Introduction	UP-10000	SLI	26	
Describes the MAPPER 80 software, which is an all-purpose computing system that enables the user to access data contained on data base and produce printed reports. Includes a built-in demonstration data base for practice.				
MAPPER 80 SYSTEM Program Product Specification	UP-9265.50 R2	SLI	4	
MAPPER 80 VERSION 3.0 FOR SYSTEM 80, SYSTEM ENHANCEMENT See SYSTEM ENHANCEMENTS.	UP-9280.86	SLI	19	‡
MAPPER 80 VERSION 3.0 FOR SYSTEM 80, SYSTEM RELEASE ANNOUNCEMENT See SYSTEM RELEASE ANNOUNCEMENTS.	UP-9280.85	SLI	10	‡
MARKETING CENTRAL SOFTWARE SUPPORT Procedure Manual	UP-9537 R1	SLI	24	‡
Describes the SPERRY OS/3 Marketing Central Software Support (MCSS) Centers and the recommended procedures to be followed to report suspected software problems. Provides Sperry customers within the continental United States with the ability to directly communicate OS/3 software problems to SPERRY by calling a toll-free 800 WATS number, and to receive available problem resolutions. Also contains procedures for reporting hardware problems.				

‡ Denotes items added or changed since the last issue of this summary.

TITLE AND DESCRIPTION	DOC. NO.	TYPE	NO. PAGES	STATUS
MENU GENERATOR TYPE NUMBER: 6254-XX Program Product Specification	UP-9265.29	SLI	2	
MENU SERVICES Concepts and Facilities	UP-9317 R1	SLI	134	‡
Describes, to both novice and experienced programmers, the concepts and use of OS/3 menus. Describes how menus, displayed on the workstation screen, can be used with assembly, COBOL, RPG II, and FORTRAN IV programs.				
MENU SERVICES Introduction	UP-9316	SLI	37	
Describes, in easy-to-understand language, the creation and use of menu display screens in OS/3. Permits novice data processing users to easily perform useful work with System 80.				
MODEL 8 - SYSTEM 80 System Description	UP-9386	SLI	137	
Describes the System 80 model 8 data processing system. Includes descriptions of the model 8 processor and peripherals available with model 8. Also includes descriptions of OS/3 software and applications software packages available with model 8.				
MODEL 8 CONTROLLERS AND COMMUNICATIONS CHANNEL OF THE MICROPROCESSOR Hardware Programmer Reference	UP-9732	RD	466	
Contains hardware design, operations, and programming information to assist in the programming of peripheral devices and communications attachments integrated with System 80 model 8 I/O facilities.				
MODEL 8 CONTROLLERS OF THE I/O PROCESSOR - SYSTEM 80 Hardware Programmer Reference	UP-9607	RD	148	
Provides hardware design, operations, and programming information that can be used to assist in the programming of peripheral subsystems integrated with System 80 model 8 I/O facilities.				
UPDATE PACKAGE A	UP-9607-A		58	‡
Documents support of the 8417/8419 disk drives. Includes the commands and sense/status information applicable to these devices.				
MODEL 8 PROCESSOR - SYSTEM 80 Hardware Programmer Reference	UP-9692	SLI	162	
Describes the operating characteristics of the model 8 processor. Includes configurations of peripheral equipment used in the system, as well as commands, formats, and other data needed to operate the system.				
UPDATE PACKAGE A	UP-9692-A		17	‡
Documents the support of the 8417/8419 disk devices.				

‡ Denotes items added or changed since the last issue of this summary.

TITLE AND DESCRIPTION	DOC. NO.	TYPE	NO. PAGES	STATUS
MODEL 8 PROCESSOR AND CENTRAL PERIPHERALS - SYSTEM 80 Operator Reference	UP-9608	SLI	188	
Provides information required to operate the model 8 processor and peripheral equipment required for minimum system configuration. Operator control panels are illustrated and described, as well as set-up procedures required to initiate operation of the system and peripheral equipment.				
UPDATE PACKAGE A	UP-9608-A		58	‡
Documents support of the 8417/8419 disk devices and the information necessary to operate these devices.				
MODELS 4 AND 6 I/O INTEGRATED CONTROLLERS Reference	UP-9693	SLI	325	‡
Contains information to assist in programming peripheral subsystems through the I/O integrated controller.				
MODELS 4 AND 6 - SYSTEM 80 System Description	UP-9577	SLI	131	
Describes System 80 models 4 and 6 data processing systems. Covers: hardware description, including processors and peripherals, description of operating system and its various components, and descriptions of applications software packages available for System 80 models 4 and 6.				
NINE THOUSAND REMOTE (NTR) Program Product Specification	UP-9265.22	SLI	2	
NORDIC PDN SUPPORT SYSTEM RELEASE ANNOUNCEMENT E8F See SYSTEM RELEASE ANNOUNCEMENTS.	UP-9280.5	SLI	11	
NORDIC PUBLIC DATA NETWORK (PDN) SUPPORT TYPE NUMBER: 6248-XX Program Product Specification	UP-9265.48 R1	RD	4	
NTR UTILITY User Guide	UP-9502	SLI	81	
Describes the NTR utility, which permits a System 80 system to operate as a remote job entry/batch terminal to a SPERRY Series 1100 system via ICAM. Previously, information in this manual was part of the ICAM Utilities User Guide, UP-8552.				
UPDATE PACKAGE A	UP-9502-A		38	‡
Contains messages that can be displayed when using the NTR utility in a Telcon environment and additional NTR utility run-time messages.				
ONLINE DIAGNOSTICS AND MAINTENANCE Program Product Specification	UP-9265.28	SLI	4	

‡ Denotes items added or changed since the last issue of this summary.

TITLE AND DESCRIPTION	DOC. NO.	TYPE	NO. PAGES	STATUS
OPERATIONS HANDBOOK Operator Reference	UP-8859 R3	SLI	233	
Instructs and guides the system operator, at the console workstation, in the procedures and commands required to operate System 80. Introduces the operator to System 80 hardware and software. Describes system turn-on and turn-off procedures, system initialization and job processing procedures, as well as system operator commands and messages for controlling interactive services, ICAM, and various system utilities.				
UPDATE PACKAGE A	UP-8859 R3-A		73	‡
Documents for Release 9.0: IPL procedures for 8470 disks and model 8 disk control units; model 8 processor configurations to include 8417/8419 disk subsystems, U26/28 magnetic tape subsystems, RPI-RPA 789/798 remote printers, and documentation references for this added equipment; changes regarding ONUERL error log editor; LIMITS resource management parameter definitions; disk cache facility (DCF).				
OS/4 TO OS/3 ASSEMBLY PROGRAM TRANSLATOR User Guide/Programmer Reference	UP-8516 R1	SLI	313	
Describes, for experienced assembler programmers and system analysts, the use of the assembly program translator (ASMTRN) in the conversion of OS/4 assembler programs to OS/3. Provides information on running ASMTRN, as well as information on converting those assembler statements that ASMTRN cannot translate automatically.				
OS/4 TO OS/3 COMMUNICATIONS CONVERSION User Guide/Programmer Reference	UP-8515 R1	SLI	89	
Describes the conversion from OS/4 standard and mini-message control programs to the OS/3 ICAM communications system. For use by experienced communications programmers and system analysts.				
OS/4 TO OS/3 CONVERSION Introduction	UP-8596 R1	SLI	29	
Describes, in easy-to-understand language, the process of converting from a data processing system running under OS/4 to a system running under OS/3. Describes the programs available to aid in the conversion and the processes for converting data and program files.				
OS/4 TO OS/3 CONVERSION GUIDE User Guide/Programmer Reference	UP-8553 R1	SLI	129	
Provides the system analyst and site manager with an overview of the process of converting from OS/4 to OS/3. Describes, in detail, the process of transcribing program source libraries and data files. Discusses FORTRAN, COBOL, and RPG language differences, as well as the conversion of ICAM and IMS programs.				
OS/4 TO OS/3 JOB CONTROL CONVERSION UTILITY User Guide/Programmer Reference	UP-8589 R1	SLI	107	
Describes the utility program (JCON1) used to convert OS/4 job control streams to their OS/3 equivalents. Provides programmers and systems analysts with information on how to run the utility and gives examples of conversion.				

‡ Denotes items added or changed since the last issue of this summary.

TITLE AND DESCRIPTION	DOC. NO.	TYPE	NO. PAGES	STATUS
PRESENTATION FOLDER	UD1-572	RD		
PRINTER, HIGH SPEED, FORMAT SHEET 11" x 16" (50 SHEETS/PAD)	UD1-1108	RD		
PRINTER, 0776 General Description	UP-8354 R3	SLI	84	
Provides a general functional description, including subsystem configuration and performance characteristics of forms, ribbons, print bands, and hardware elements. Lists printer commands, operator controls and indicators, and 23 types of print cartridge character sets. Also describes physical characteristics.				
PRINTER, 0776 Media and Expendable Supplies	UP-8445 R1	SLI	19	
Defines form design and construction, defines storage requirements, and provides ribbon specifications and ordering information.				
PRINTER, 0776 Operator Reference	UP-8250 R3	SLI	59	
Describes hardware elements and operating procedures. Lists controls and indicators and defines operator maintenance. Provides instructions, including on/off procedures, forms loading, and ribbon replacement.				
UPDATE PACKAGE A	UP-8250 R3-A		5	
Changes the disclaimer to include the required FCC warning on device radiation.				
PRINTER 0776 Reference	UP-8441 R3	RD	124	
Provides information needed to program the SPERRY 0776 Printer Subsystem and describes printer characteristics and configurations. Includes programming information on control and diagnostic byte structures, and recovery procedures.				
PRINTER, 0786 General Description	UP-8495	SLI	23	
Describes general printer features, operation (including printing method and print system), interface signals and control, and printer specifications (including physical characteristics).				
PRINTER, 0786 Operator's Guide	UP-8496 R1	SLI	30	
Provides a brief description of the printer operating principles, as well as the controls and indicators. Describes operating instructions, including paper loading, format tape installation, tape-loop construction, ribbon replacement, and cleaning.				

TITLE AND DESCRIPTION	DOC. NO.	TYPE	NO. PAGES	STATUS
<p>PRINTER, 0789 General Description</p> <p>Briefly describes printer configuration, performance, media, controls and indicators, commands, status and sense bytes, and physical characteristics. Provides a complete set of print band character sets.</p>	UP-8897	SLI	54	
<p>PRINTER, 0789 Media and Expendable Supplies</p> <p>Describes forms characteristics in detail, including dimensions, construction, material, and packaging and storage, as well as type, characteristics, and expected life of the printer ribbon.</p>	UP-8907	SLI	20	
<p>PRINTER, 0789 Operator Reference</p> <p>Provides a brief description of the printer and the print bands available. Describes external and internal operator controls and indicators. Includes operating procedures, including forms loading and unloading, ribbon replacement, and print band replacement. Describes use of internal operator adjustments, as well as operator recovery procedures and cleaning instructions.</p>	UP-8908 R1	SLI	47	
<p>PRINTER, 0789 Subsystem Reference</p> <p>Provides a brief functional description and configurations of the printer. Describes functional elements and lists available print bands. Includes printer commands, status byte, and sense bytes. Lists character sets for each print band. Provides hardware-oriented programming information.</p>	UP-9167	RD	52	
<p>PRINTER, 0797 General Description</p> <p>Provides a general functional description of the characteristics, printing method, interface control, controls and indicators, and physical specifications of the printer.</p>	UP-9159	SLI	21	
<p>PRINTER, 0797 Media and Expendable Supplies</p> <p>Provides a description and specifications of forms, both preprinted and blank, used on the printer. Also includes specifications on the ribbon fabric, ink, and spool.</p>	UP-9162	SLI	21	
<p>PRINTER, 0797 Operator Guide</p> <p>Provides a brief functional description of the printer, as well as self-tests and operator responsibilities. Illustrates and describes controls and indicators. Includes operating instructions for loading forms, installing forms tractor, loading sprocketed forms, self-tests, ribbon replacing, and operator maintenance.</p>	UP-9160 R1	SLI	28	

TITLE AND DESCRIPTION	DOC. NO.	TYPE	NO. PAGES	STATUS
PRINTER, 0798 General Description	UP-8871	SLI	31	
Describes general operating characteristics, interface selections, character set selections, print format and control, printing method, printing system, interface control, print commands, status signals, and physical specifications.				
PRINTER, 0798 Installation Guide	UP-8865 R1	SLI	42	
Describes the procedure for installing the SPERRY 0798 Printer Subsystem. Instructions are included for connecting the printer interface cable to the printer, turning on printer power, and performing a printer self-test.				
PRINTER, 0798 Operator's Guide	UP-8882	SLI	31	
Provides a brief description of how the printer works, dot matrix printing method, printer characteristics, and self-tests. Describes controls and indicators. Includes operating instructions for paper loading, adjustments for forms thickness, self-tests, use of a forms bar, ribbon changing, and cleaning instructions.				
UPDATE PACKAGE A	UP-8882-A		3	
Corrects an error in Table 2-1.				
UPDATE PACKAGE B	UP-8882-B		5	
Changes the disclaimer to include the required FCC warning on device radiation.				
PROCESSOR - SYSTEM 80 Operator Reference	UP-8880 R1	SLI	62	
Provides a brief description of the System 80 processor and its closely associated peripheral devices, including the diskette drive and console workstation. Describes operating controls and indicators and operating procedures.				
UPDATE PACKAGE A	UP-8880 R1-A		13	
Provides information to ensure the integrity of disk files when system power is turned off.				
UPDATE PACKAGE B	UP-8880 R1-B		5	
Changes the disclaimer to include the required FCC warning on device radiation.				
PROCESSOR - SYSTEM 80 Programmer Reference	UP-8881 R1	RD	203	
Provides detailed hardware-oriented information required to program the System 80 processor. Includes a brief functional description and configurations. Includes information for programming the processor, system control, operations control, interruption processing, and I/O processing.				

TITLE AND DESCRIPTION	DOC. NO.	TYPE	NO. PAGES	STATUS
UPDATE PACKAGE A Deletes references to the intercomputer control unit (ICCU).	UP-8881 R1-A		10	
PSS PUBLIC DATA NETWORK (PDN) SUPPORT TYPE NUMBER: 6248-XX (UNITED KINGDOM) Program Product Specification	UP-9265.47	RD	4	
REMOTE PRINTER SUPPORT, 0789 SYSTEM ENHANCEMENT E7I See SYSTEM ENHANCEMENTS.	UP-9210.9	SLI	12	
REMOTE PRINTER SUPPORT, 0789 SYSTEM RELEASE ANNOUNCEMENT E7I See SYSTEM RELEASE ANNOUNCEMENTS.	UP-9210.8	SLI	9	
REMOTE TERMINAL PROCESSING (RTP), TYPE NUMBER: 6130-XX Program Product Specification	UP-9265.40 R1	SLI	4	
REMOTE TERMINAL PROCESSOR SYSTEM ENHANCEMENT E8E See SYSTEM ENHANCEMENTS.	UP-9280.20	SLI	10	
REPORT PROGRAM GENERATOR PRINTER FORMAT CHART R. 3-70 8-1/2" x 11" (50 SHEETS/PAD)	UD1-1628	RD		
REPORT PROGRAM GENERATOR II (RPG II) Introduction Discusses the purpose, use, capabilities, and limitations of RPG II. For all levels of users.	UP-8818	SLI	28	
REPORT PROGRAM GENERATOR II (RPG II) Programmer Reference A quick reference for applications programmers familiar with OS/3 RPG II. Covers: specifications forms; indicators; automatic services for printed reports; collating and file translation; subroutines; IMS action programs; program execution; auto report; compilation time; and auto report error messages.	UP-8044 R3	SLI	254	
UPDATE PACKAGE A Provides additional information about RPG II for OS/3 Release 8.0, including: using RPG II interactively; the /SPACE n directive; error messages; defining a PAGE field; SETK operation; RCB continuation line for MIRAM files; file retrieval; adding/deleting records; and MIRAM parameter.	UP-8044 R3-A		74	
UPDATE PACKAGE B Includes: correction of the number of continuation lines permitted for each file (five); expanded explanation of AR068 diagnostic message; and data structures that begin on a double-word boundary in main storage.	UP-8044 R3-B		9	
UPDATE PACKAGE C Provides additional information about RPG II for Release 8.2: field location description; keyword parameter PROGID; and change and expansion of diagnostic messages.	UP-8044 R3-C		23	

TITLE AND DESCRIPTION	DOC. NO.	TYPE	NO. PAGES	STATUS
REPORT PROGRAM GENERATOR II (RPG II) Summary	UP-8253 R4	SLI	1	
Summarizes the RPG II specification formats; indicator definitions, use, and settings; calculation operations; and error messages. Pocket-sized.				
REPORT PROGRAM GENERATOR II (RPG II) User Guide	UP-8067 R6	SLI	751	
Describes RPG II and its effective use for the novice applications programmers and experienced applications programmers not familiar with SPERRY systems. Discusses general concepts and program logic, file organization, record and data formats, RPG II specifications forms, telecommunications, and how to compile, link, and execute a user program.				
UPDATE PACKAGE A	UP-8067 R6-A		174	
Provides additional information about RPG II for OS/3 Release 8.0, including: using RPG II interactively; the /SPACE n directive; error messages; defining a PAGE field; job control for interactive data entry; SETK operation; RCB continuation line for MIRAM files; file retrieval; data structures; multikey MIRAM files; adding/deleting records; and MIRAM parameter.				
UPDATE PACKAGE B	UP-8067 R6-B		95	
Includes: a reference to assigned DVC numbers; correction as to how many continuation specifications may be used (five); expanded explanation of AR068 diagnostic message; data structures that begin on a double-word boundary in main storage; correction of number of workstations (255) used with workstation files; and explanation for placement of input format specifications for data structures.				
UPDATE PACKAGE C	UP-8067 R6-C		86	
Provides additional information about the following features for Release 8.2: field location description; interactive data entry screen formats; PROGID keyword parameter; and changed and expanded diagnostic messages.				
UPDATE PACKAGE D	UP-8067 R6-D		50	‡
Describes the REFER operation, which lets you retrieve records from indexed multikey files in IMS action programs.				
Provides additional compilation time error messages.				
REPORT PROGRAM GENERATOR II CALCULATION SPECIFICATION FORM 11" x 16" (50 SHEETS/PAD)	UD1-1167	RD		
REPORT PROGRAM GENERATOR II CONTROL CARD AND FILE SPECIFICATION FORM 11" x 16" (50 SHEETS/PAD)	UD1-1166	RD		
REPORT PROGRAM GENERATOR II FILE EXTENSION AND LINE CONTROL SPECIFICATION FORM 11" x 16" (50 SHEETS/PAD)	UD1-1170	RD		

‡ Denotes items added or changed since the last issue of this summary.

TITLE AND DESCRIPTION	DOC. NO.	TYPE	NO. PAGES	STATUS
REPORT PROGRAM GENERATOR II (RPG II) GROUP Program Product Specification	UP-9265.10	SLI	2	
REPORT PROGRAM GENERATOR II INPUT FORMAT SPECIFICATION FORM 11" x 16" (50 SHEETS/PAD)	UD1-1164	RD		
REPORT PROGRAM GENERATOR II OUTPUT FORMAT SPECIFICATION FORM 11" x 16" (50 SHEETS/PAD)	UD1-1165	RD		
REPORT PROGRAM GENERATOR II TELECOMMUNICATIONS SPECIFICATION FORM 11" x 16" (50 SHEETS/PAD)	UD1-1171	RD		
REPORT PROGRAM GENERATOR (RPG II) EDITOR User Guide/Programmer Reference	UP-8803 R2	SLI	96	
<p>For users prior to Release 8.2, describes how the RPG II programmer can use the RPG II editor to create and maintain RPG II source programs interactively from a workstation. Explains and illustrates how to activate the RPG II editor and use it to create and update source programs. Also lists the general editor commands available through the RPG II editor and describes how to use the general editor to store and compile the finished program.</p>				
UPDATE PACKAGE A	UP-8803 R2-A		18	
<p>Explains how to enter an & option in a /COPY modifier statement applicable to OS/3 Release 8.0. Provides sample initial display screens to illustrate the position of the release level and version number of the RPG II editor being used.</p>				
REPORT PROGRAM GENERATOR II (RPG II) EDITOR User Guide/Programmer Reference	UP-9981	SLI	96	
<p>Supersedes, for System 80 users, UP-8803. Essentially the same except for corrections or clarifications applicable to features present in OS/3 prior to Release 8.2.</p>				
RESOURCE MANAGEMENT FACILITY, TYPE NUMBER 6933-00 Program Product Specification	UP-9265.51	SLI	4	‡
SCREEN FORMAT SERVICES Concepts and Facilities	UP-8802 R2	SLI	191	
<p>For users prior to Release 8.2, describes how programmers can use screen format services to create and maintain formatted screen displays for use with their application programs. Discusses the use of screen formats with COBOL, RPG II, FORTRAN IV, or assembler programs.</p>				
UPDATE PACKAGE A	UP-8802 R2-A		48	
<p>Provides corrections or clarifications for features present for OS/3 Release 8.0 and prior releases.</p>				

‡ Denotes items added or changed since the last issue of this summary.

TITLE AND DESCRIPTION	DOC. NO.	TYPE	NO. PAGES	STATUS
SCREEN FORMAT SERVICES Concepts and Facilities	UP-9977	SLI	226	
Supersedes UP-8802 for System 80 users starting with Release 8.2. Changes include: a 24-line display format that provides easier readability; use of underlines in the user's work area for numeric edited fields; notification via a response indicator (dialog 7) that a field was modified by the operator; and transmission of all input-capable variables on the screen without regard to cursor positioning.				
UPDATE PACKAGE A	UP-9977-A		23	‡
Documents for Release 9.0 the Batch Format Generator feature.				
SCREEN FORMAT SERVICES Introduction	UP-8873	SLI	23	
Describes, in pamphlet form, an easy way to move information through your computer system using the OS/3 screen format services. Describes how the screen format generator and coordinator help create and maintain files.				
SCREEN PAINT TIME SYSTEM ENHANCEMENT E7K See SYSTEM ENHANCEMENTS.	UP-9210.25	SLI	11	
SECURITY MAINTENANCE UTILITY User Guide/Programmer Reference	UP-8823 R1	SLI	28	
Instructs the system administrator in the enforcement of system security through controlling access to his system's interactive facilities. Explains how to set up interactive security, explains the dialog used to communicate with the utility setting up interactive security, and gives examples. Also describes how to use the system maintenance utility to account for use of interactive computer time.				
SERIES 90 TO MODEL 8 MIGRATION User Guide	UP-9743	SLI	72	
Describes the process of migrating from the SPERRY Series 90 Data Processing System to the SPERRY System 80 Model 8 Data Processing System. Provides an overview of the migration process and gives a suggested sequence for accomplishing the phases of migration. Discusses migration tasks in detail.				
SINGLE-LINE COMMUNICATIONS ADAPTER-2 (SCLA-2) SYSTEM ENHANCEMENT E7D See SYSTEM ENHANCEMENTS.	UP-9210.5	SLI	9	
SINGLE-LINE COMMUNICATIONS ADAPTER-2 (SCLA-2) SYSTEM RELEASE ANNOUNCEMENT E7D See SYSTEM RELEASE ANNOUNCEMENTS.	UP-9210.4	SLI	9	
SOFTWARE USER REPORT (SUR) 5-PART FORM	UD1-745	SLI		

‡ Denotes items added or changed since the last issue of this summary.

TITLE AND DESCRIPTION	DOC. NO.	TYPE	NO. PAGES	STATUS
SORT/MERGE Introduction	UP-8073 R2	SLI	20	
Describes, in easy-to-understand language, the sort/merge facilities available with OS/3, as well as the independent sort/merge program, the subroutine sort/merge, and the IBM-compatible SORT3 program. Includes how they are used and the options available to make them more versatile.				
SORT/MERGE Program Product Specification	UP-9265.19	SLI	2	
SORT/MERGE MACROINSTRUCTIONS User Guide/Programmer Reference	UP-9072 R1	SLI	142	
Describes, for the assembly language programmer, the macroinstructions provided for sorting and merging files as part of an assembler program. Provides greater control over the sort/merge process than other available sort/merge facilities. Two specialized features: tag sorts and merge-only routines.				
UPDATE PACKAGE A	UP-9072 R1-A		10	‡
Corrects Table 1-2, Comparison of Transfer Rates for Magnetic Tape Devices.				
SORT3 Program Product Specification	UP-9265.20	SLI	2	
SORT3 User Guide/Programmer Reference	UP-8836 R2	SLI	87	
Describes the use of the SORT3 program, compatible with sort programs available with IBM System/3, System/32, and System/34. Describes the statements needed to create sort specifications and how to run SORT3.				
UPDATE PACKAGE A	UP-8836 R2-A		10	‡
Includes changes for Release 9.0 to program restrictions and considerations, and comparison of transfer rates for magnetic tape devices.				
SPOOLING AND JOB ACCOUNTING Concepts and Facilities	UP-8869 R2	SLI	209	
For users prior to Release 8.2, describes, for the system administrator, basic spooling concepts, input and output spooling functions, remote spooling capabilities, and general spooling controls. Explains how the spool file is initialized and recovered, and how job accounting reports are produced. Includes the system operator's spooling reference and a spooling summary.				
UPDATE PACKAGE A	UP-8869 R2-A		42	
Discusses remote auxiliary printer support for OS/3 Release 8.0. Provides expanded descriptions applicable to features for prior releases.				

‡ Denotes items added or changed since the last issue of this summary.

TITLE AND DESCRIPTION	DOC. NO.	TYPE	NO. PAGES	STATUS
UPDATE PACKAGE B	UP-8869 R2-B		30	
Introduces page mode printing feature now supported by the output writer. Includes changes to the ALL parameter associated with the BEGIN, DELETE, and HOLD SPL commands, as well as miscellaneous technical changes and corrections.				
SPOOLING AND JOB ACCOUNTING	UP-9975	SLI	210	
Concepts and Facilities				
Supersedes UP-8869 for System 80 users starting with Release 8.2. Includes: enhancement of the BRKPT LOG and BRKPT CNSLG commands that allows the user to redirect these logs to tape, disk, or diskette for later processing (printing); and enhancement of the output writer to permit redirected output to be retained on disk/diskette after processing. Also to release these subfiles for processing.				
STREAMING MAGNETIC TAPE DRIVE, 3782	UP-9381	SLI	34	
Operator Reference				
Describes the operation of the 3782 streaming magnetic tape drive. Includes procedures for tape loading and unloading, error recovery, tape drive cleaning, and self-test routines.				
UPDATE PACKAGE A	UP-9381-A		5	
Changes the disclaimer to include the required FCC warning on device radiation.				
SUMMARY OF CURRENT DOCUMENTATION	UP-8986	SLI	101	
Lists all current documents released.				
SUPERVISOR	UP-8831 R2	SLI	72	
Concepts and Facilities				
Provides an overview of the OS/3 supervisor and its functions for OS/3 high-level language programmers and site administrators.				
SUPERVISOR	UP-8830	SLI	18	
Introduction				
Describes, in easy-to-understand language, the role of the supervisor in the OS/3 operating system, and gives an overview of how the supervisor works in both batch and interactive modes.				
SUPERVISOR MACROINSTRUCTIONS	UP-8832	SLI	255	
Programmer Reference				
Describes, for the assembler programmer, the OS/3 supervisor macroinstructions used for program management, file space management, file access, multitasking, and spooling. Describes formats and coding conventions for the macroinstructions, as well as diagnostic and debugging information and examples of macroinstruction use.				

TITLE AND DESCRIPTION	DOC. NO.	TYPE	NO. PAGES	STATUS
UPDATE PACKAGE A Discusses newly added support of checkpoint files on diskette and magnetic tape available with OS/3 Release 7.1.	UP-8832-A		41	
UPDATE PACKAGE B Documents the following changes for OS/3 Release 8.0: enhancement of the OC STXIT routine; restrictions to the monitor routine; and addition of the soft-patch symbiont to the system debugging aids. Also includes minor technical changes to features of supervisor macroinstructions prior to Release 8.0.	UP-8832-B		42	
UPDATE PACKAGE C Provides a correction to features of supervisor macroinstructions prior to OS/3 Release 8.0.	UP-8832-C		5	
UPDATE PACKAGE D Documents the following new macroinstructions for Release 8.2: GETLDA and PUTLDA.	UP-8832-D		14	
SYSTEM ACTIVITY MONITOR User Guide/Programmer Reference For users prior to Release 8.2, describes, for the system administrator and site manager, the use of the system activity monitor (SAM) when evaluating system performance. Discusses the system activities and events that can be monitored, the statistical information collected, and the types of reports that can be produced from those statistics. Provides sample monitoring sessions and examples of how to use each statistic to analyze and remedy system performance problems.	UP-8812 R3	SLI	79	
SYSTEM ACTIVITY MONITOR User Guide/Programmer Reference Supersedes, for System 80 users, UP-8812. Essentially the same except reflects enhancements that, though primarily devices for model 8, are available to all System 80 models.	UP-9983	SLI	79	
UPDATE PACKAGE A Documents for Release 9.0 changes in co-channeling, I/O class readings, and DSK class items.	UP-9983-A		8	‡
SYSTEM CONTROL SOFTWARE, TYPE NUMBER: 6210-XX Program Product Specification	UP-9265.3 R1	SLI	6	
SYSTEM 80 System Description Contains information on the enhancements made to System 80 via OS/3 release 7.1.	UP-8800 R1	SLI	121	

‡ Denotes items added or changed since the last issue of this summary.

TITLE AND DESCRIPTION	DOC. NO.	TYPE	NO. PAGES	STATUS
SYSTEM ENHANCEMENTS:				
DATEX-P PDN SUPPORT SE E8G	UP-9280.8	SLI	15	
Describes DATEX-P Public Data Network Support for OS/3 Release 8.0. Connects a System 80 or Series 90 system to the German DATEX-P packet-switched public data network using the CCITT X.25 recommendation. Includes a description of the enhancement release contents, package, and installation procedures.				
IBM 3270 EMULATOR SE E8B	UP-9280.4	SLI	17	
Describes the enhancement release contents, package, and installation procedures for System Enhancement E8B. Provides support for an IBM 3270 Emulator, which functions as a 3271 control unit. Allows an OS/3 processor to function as an IBM 3270 Information Display System attached by a remote BSC communications link to an IBM host processor. Permits half-duplex communication using BSC with EBCDIC code in a point-to-point or multipoint polled environment.				
FILE TRANSFER UTILITY (PCTTRAN) SE	UP-9280.81	SLI	27	‡
Describes the File Transfer Utility (PCTTRAN) for OS/3 Release 8.1.1/8.2 System 80.				
IMS-DDP TRANSACTION PROCESSING SE E8A	UP-9280.10	SLI	12	
Describes the IMS-DDP Transaction Processing support OS/3 Release 8.0. Is a multithread IMS enhancement that provides a set of distributed data processing transaction facilities to give the user a high degree of flexibility in the design of distributed applications. Includes: transaction directory routing, transaction program routing, and transaction operator routing.				
MAPPER 80 VERSION 3.0 FOR SYSTEM 80 SE	UP-9280.86	SLI	19	‡
Contains new MAPPER 80 functions and enhancements. Also included is the installation procedure and a description of the release media for OS/3 Release 8.2 and 9.0.				
REMOTE TERMINAL PROCESSOR SE E8E	UP-9280.20	SLI	10	
Describes the Remote Terminal Processor Enhancement operating under OS/3 Release 8.0. Operates on an OS/3 host processor functioning as a remote job entry system to an IBM central site host system. Includes a description of the enhancement release contents, package, and installation procedures.				
UTS 40D LOCAL WORKSTATION WITH AUXILIARY PRINTER FOR SYSTEM 80 SE E8C	UP-9280.12	SLI	23	
Describes the UTS 40D Local Workstation with Auxiliary Printer for Release 8.0. Allows routing of spool print files to a local workstation auxiliary printer. By using job control and screen commands, can also: direct printout to any model 2 workstation auxiliary printer or to any system printer via job control; interactively direct printout to a system printer or to a model 2 workstation auxiliary printer; and use the model 2 workstation auxiliary printer as an offline device.				

‡ Denotes items added or changed since the last issue of this summary.

TITLE AND DESCRIPTION	DOC. NO.	TYPE	NO. PAGES	STATUS
SYSTEM INSTALLATION Introduction	UP-8838	SLI	19	
Describes, in easy-to-understand language, the procedures for installing a System 80 data processing system and the software aids available to help the site administrator complete the installation process.				
SYSTEM INSTALLATION User Guide/Programmer Reference	UP-8839 R4	SLI	236	
Provides the system administrator with information and procedures necessary to install, tailor, and maintain OS/3 software in a System 80 environment.				
UPDATE PACKAGE A	UP-8839 R4-A		101	‡
Includes for OS/3 Release 9.0: capabilities of the 8417, 8419, and 8470 disks; differentiation of models 3-6 and model 8; addition of CU=AAA option for running IMPLDSKT; addition of a resource management capability; new keyword parameters RESMG, SM\$LOD, and ISWORKn; changes in numerous keyword parameters.				
SYSTEM MAINTENANCE FACILITIES Introduction	UP-8872	SLI	17	
Describes, in easy-to-understand language, the facilities available to monitor the performance of System 80 and its associated peripheral devices and to help diagnose any problems that may arise with System 80 hardware.				
SYSTEM MESSAGES Programmer/Operator Reference	UP-8076 R11	SLI	710	
A quick-reference manual intended for operators and programmers. Groups system messages into four sections: three by prefixes, and one for unprefixed messages. Informs the operator of job status or tasks to be performed; informs programmer of job status and program errors. Message description composed of the remedial action or response required as applicable.				
UPDATE PACKAGE A	UP-8076 R11-A		48	‡
For Release 9.0, incorporates changes to many messages, including those that were revised, added, or deleted.				
SYSTEM OPERATIONS Summary	UP-8376 R8	SLI	187	
For users prior to Release 8.2, a quick-reference guide for system administrators, operators, and programmers that summarizes the procedures and commands used operating under OS/3.				
SYSTEM OPERATIONS Summary	UP-9985	SLI	171	
Supersedes, for System 80 users, UP-8376. Contains information concerning the operations of System 80 only. Includes new information on the operation of System 80 model 8.				

‡ Denotes items added or changed since the last issue of this summary.

TITLE AND DESCRIPTION	DOC. NO.	TYPE	NO. PAGES	STATUS
UPDATE PACKAGE A	UP-9985-A		10	‡
For Release 9.0, includes information on changing resource management memory and job initiation limits (LIMITS) and displaying system status (STATUS).				
SYSTEM RELEASE ANNOUNCEMENTS:				
FILE TRANSFER UTILITY (PCTRAN)	UP-9280.80	SLI	10	‡
Announces the availability of the File Transfer Utility (PCTRAN) for OS/3 Release 8.1.1/8.2 System 80.				
MAPPER 80 VERSION 3.0 FOR SYSTEM 80	UP-9280.85	SLI	10	‡
Announces the availability of the enhanced MAPPER 80 Version 3.0 for OS/3 Releases 8.2 and 9.0 for System 80.				
RELEASE 8.1.1	UP-9280.68	SLI	17	‡
Announces the availability of the SPERRY Operating System/3 (OS/3) Release 8.1.1. Incorporates SMCs not applied to Release 8.1 as of 4-16-84. Includes system enhancements for streaming tape support, MAPPER 80 software for System 80, and DMS index location mode.				
RELEASE 8.2	UP-9280.70	SLI	17	‡
Announces the availability of the SPERRY Operating System/3 (OS/3) Release 8.2 for System 80. Describes the release enhancements and new hardware support. Also includes the software category changes.				
RELEASE 9.0	UP-10830.1	SLI	17	‡
Announces the availability of the SPERRY Operating System/3 (OS/3) Release 9.0. Includes a description of release enhancements, new hardware support, software category changes, and ordering procedures.				
REMOTE TERMINAL PROCESSOR ENHANCEMENT E8E	UP-9280.19	SLI	12	
Announces the availability of the Remote Terminal Processor Enhancement for OS/3 Release 8.0. Operates on an OS/3 host processor functioning as a remote job entry system to an IBM central site host system. Includes a description of the release and the request and ordering procedures for it.				

SYSTEM RELEASE DESCRIPTIONS:

RELEASE 8.1.1	UP-9280.69	SLI	243	‡
Describes the contents of SPERRY Operating System/3 (OS/3) Release 8.1.1, guidelines and restrictions concerning its use, and system enhancements for streaming tape support, MAPPER 80 software for System 80, and DMS index location mode.				

‡ Denotes items added or changed since the last issue of this summary.

TITLE AND DESCRIPTION	DOC. NO.	TYPE	NO. PAGES	STATUS
RELEASE 8.2	UP-9280.71	SLI	223	‡
Describes the contents of SPERRY Operating System/3 (OS/3) Release 8.2 and provides support for the new System 80 Model 8 and includes performance and functional enhancements for all System 80 models.				
RELEASE 9.0	UP-10830.2	SLI	165	‡
Describes the contents of SPERRY Operating System/3 (OS/3) Release 9.0, guidelines and restrictions concerning its use. Includes major performance and functional enhancements for the control system, support programs, communications, applications support, and hardware diagnostics.				
SYSTEM SERVICE PROGRAMS (SSP) Introduction	UP-8840	SLI	27	
Describes, in easy-to-understand language, the programs that make up the software package termed the OS/3 system service programs. Includes the linkage editor, the librarians, programs to prepare magnetic disks and tapes for use, and various other programs designed to remove the necessity for programmers to write their own housekeeping programs.				
SYSTEM SERVICE PROGRAMS (SSP) Programmer Reference	UP-8842 R3	SLI	142	
For experienced programmers, provides a quick-reference guide to the system service programs. Includes the SAT and MIRAM librarians, the linkage editor, disk, tape, and diskette preps, and various other utility routines.				
UPDATE PACKAGE A	UP-8842 R3-A		12	‡
Includes for Release 9.0 corrections and clarifications of the 8.2 release.				
SYSTEM SERVICE PROGRAMS (SSP) User Guide	UP-8841 R3	SLI	473	
Describes, for the novice programmer, the use of the system service programs, which are utility programs that support the operation and organization of the operating system and that include the SAT and MIRAM librarians, linkage editor, disk, tape, and diskette prep routines, and various copy routines.				
UPDATE PACKAGE A	UP-8841 R3-A		26	‡
Documents for Release 9.0 revisions to the source module, object, and load code sets. Other changes are expanded descriptions, corrections, or clarifications of the 8.2 release.				
SYSTEM/3 TO OS/3 TRANSITION User Guide/Programmer Reference	UP-8379 R4	SLI	193	
Describes, in detail, the process of converting from IBM System/3 to OS/3. Includes information on how to transcribe System/3 program source libraries, data files, and operation control language (OCL) streams to their OS/3 analogs. Also describes the differences in programming languages between System/3 and OS/3 and how to convert language programs. Assists the systems analyst, programmer, and site manager in the conversion process.				

‡ Denotes items added or changed since the last issue of this summary.

TITLE AND DESCRIPTION	DOC. NO.	TYPE	NO. PAGES	STATUS
UPDATE PACKAGE A Covers removal of support for split-cylinder file allocation, corrects several errors in sample OCL and JCL streams, and contains other minor corrections.	UP-8379 R4-1		71	‡
SYSTEM/32, 34 TO OS/3 CONVERSION User Guide Describes the various activities necessary to convert from an IBM System/32 or System/34 data processing system to OS/3. Describes in detail the transcription of source program libraries and data files, discusses the differences in COBOL, FORTRAN, and RPG between the IBM systems and OS/3, and describes the utility programs available to aid the conversion effort. Also provides a general conversion plan, outlining the steps to be taken to facilitate the conversion.	UP-9318	SLI	102	
SYSTEM 80 Concepts and Facilities Describes, for the system administrator or programmer unfamiliar with System 80, overall operation and use of System 80 and OS/3 software. Discusses the function of all software products, particularly the relationship of the components, one with another, and in relation to the system as a whole.	UP-8870 R1	SLI	193	
UPDATE PACKAGE A Clarifies several System 80 features that appeared in prior releases.	UP-8870 R1-A		20	
SYSTEM 80 Operator Maintenance Guide Presents procedures for defining System 80 malfunctions through fault isolation diagnostics and procedures for reporting detailed error descriptions to customer engineering when requesting corrective maintenance.	UP-8915 R3	SLI	83	
SYSTEM 80 MODEL 8 Operator's Maintenance Guide Describes the procedures to isolate fault conditions, run proper diagnostic procedures, and request corrective maintenance.	UP-9710	SLI	81	‡
TECHNICAL BULLETIN #11 Describes various guidelines for using diskettes on System 80. Covers: diskette prepping considerations, allocating and scratching files on diskettes, restrictions, and considerations for conversion from IBM to SPERRY equipment using diskettes.	UP-8605.11	SLI	16	
TECHNICAL BULLETIN #12 Describes restrictions and provides guidelines to be followed when using the communications facilities of the COBOL language to interact with communication devices through ICAM.	UP-8605.12 R1	SLI	15	
TECHNICAL QUESTIONS, QUESTION AND ANSWER FORM 8-1/2" x 11" (50 SHEETS/PAD)	UD1-1195	RD		

‡ Denotes items added or changed since the last issue of this summary.

TITLE AND DESCRIPTION	DOC. NO.	TYPE	NO. PAGES	STATUS
TERMINAL MULTIPLEXER, 8609 Deinstallation and Packing Guide	UP-9358	SLI	18	
Contains instructions for deinstalling and repacking the 8609 terminal multiplexer including the power cable.				
TERMINAL MULTIPLEXER, 8609/8610, DIRECT CONNECTION MODULE Site Preparation Guide	UP-9355	SLI	62	
Provides assistance in planning the installation of the 8610 direct connection module (DCM) and the 8609 terminal multiplexer. Describes the physical and electrical characteristics of the DCM and the terminal multiplexer and includes information for planning a data communications network that includes DCMs and terminal multiplexers.				
TERMINAL PRINTER, MODEL 800, TYPE 0774 Component Description	UP-8339	SLI	49	
Describes operating characteristics, printing system, configuration and cabling, operational selections, technical specifications, and ordering and storing supplies. Describes controls and indicators and operational procedures. Includes interface signal descriptions, mode of operation, and operational select codes.				
TERMINAL PRINTER, MODEL 800, TYPE 0774-07, 08 General Description	UP-8471	SLI	33	
Describes printer use, functional operation, controls and indicators, customer selections and features, ordering directions, and detailed specifications, including operational data, physical characteristics, power requirements, and environmental requirements.				
TERMINAL PRINTER, MODEL 800, TYPE 0774-07, 08 Operator Guide	UP-8470	SLI	57	
Provides a brief functional description and describes printer operation. Illustrates and describes controls and indicators and provides operating instructions and maintenance instructions, including those for adjustments and cleaning. Provides forms loading procedures and internal adjustments for improved print quality. Includes a troubleshooting guide for the operator.				
TRANSPAC PUBLIC DATA NETWORK (PDN) SUPPORT TYPE NUMBER: 6248-XX (FRENCH) Program Product Specification	UP-9265.32	RD	4	
UNISCOPE DISPLAY TERMINAL Concept and Applications	UP-8155	SLI	54	
Discusses the design philosophy and functional description for UNISCOPE 100 and 200 display terminals. Lists controls and indicators, describes auxiliary devices and terminal applications, and defines specifications and physical characteristics.				

TITLE AND DESCRIPTION	DOC. NO.	TYPE	NO. PAGES	STATUS
UNISCOPE DISPLAY TERMINAL Operator Reference	UP-7788 R2	SLI	26	
Provides operating information for the UNISCOPE 100 and 200 display terminals, as well as for the model 610 tape cassette. Lists and describes operator controls and indicators, keyboard control keys, and format keys. Includes operating procedures for the tape cassette for read/write sequences, search, and other procedures. Includes operator maintenance for both units.				
UPDATE PACKAGE A	UP-7788 R2-A		32	
Contains corrections to Figure 1-2 and eliminates an incorrect reference. Also contains an additional document reference and an appendix containing operating information for the model 610 tape cassette system.				
UNISCOPE DISPLAY TERMINAL Programmer Reference	UP-7807 R2	RD	175	
Provides a brief functional description for the UNISCOPE 100 and 200 as well as for the 0866 tape cassette. Includes programmer information for both units, and provides operation sequence examples, as well as error recovery.				
UNISERVO 10, TYPE 0871, MAGNETIC TAPE SUBSYSTEM General Description	UP-8891 R1	SLI	23	
Provides general functional description, including configuration tape format and conventions and data translation/conversion. Briefly describes controls and indicators, operational capabilities, command repertoire, and physical characteristics.				
UNISERVO 10, TYPE 0871, MAGNETIC TAPE Subsystem Reference	UP-8890 R1	RD	49	
Provides basic hardware-oriented information for programming the printer. Includes a brief description of the characteristics, configuration, tape drive components, and the tape format and conventions used on the printer. Lists and describes the commands, status byte, sense bytes, and data transfer conventions.				
UNIVERSAL TERMINAL SYSTEM (UTS), COBOL (SYSTEM 80) Program Product Specification	UP-9258.5	SLI	3	
UNIVERSAL TERMINAL SYSTEM (UTS), COBOL 2R1 SYSTEM RELEASE ANNOUNCEMENT See SYSTEM RELEASE ANNOUNCEMENTS.	UP-9289.2	SLI	12	
UNIVERSAL TERMINAL SYSTEM (UTS), COBOL 2R1 SYSTEM RELEASE DESCRIPTION See SYSTEM RELEASE DESCRIPTIONS.	UP-9289.1	SLI	72	
UNIVERSAL TERMINAL SYSTEM (UTS), DISKETTE FILE UTILITY Program Product Specification	UP-9220.12	SLI	2	
UNIVERSAL TERMINAL SYSTEM 20 (UTS 20) SINGLE STATION Installation Guide	UP-9140 R1	RD	33	‡
Contains simple, step-by-step procedures for installing the SPERRY Universal Terminal System 20 (UTS 20) Single Station (including keyboard) and the SPERRY Magnetic Stripe Reader. Verification procedures are now found in UP-9182 R2.				

‡ Denotes items added or changed since the last issue of this summary.

TITLE AND DESCRIPTION	DOC. NO.	TYPE	NO. PAGES	STATUS
UNIVERSAL TERMINAL SYSTEM 20 (UTS 20) SINGLE STATION Operator's Guide Contains complete operating instructions for the UTS 20 in operator-oriented language.	UP-9135 R1	RD	99	
UPDATE PACKAGE A Includes information on changing the program cartridge to include a design change from a thumbscrew to a slotted screw.	UP-9135 R1-A	11	‡	
UNIVERSAL TERMINAL SYSTEM 20 (UTS 20) SINGLE STATION Ordering Guide Contains information and instructions necessary to prepare an equipment order for the UTS 20 terminal system, including associated peripheral/auxiliary equipment. Includes a general functional overview of the equipment, along with simplified instructions for filling out the order forms.	UP-9137 R1	RD	30	
UNIVERSAL TERMINAL SYSTEM 20 (UTS 20) SINGLE STATION System Description Describes the capabilities and functional operations of the UTS 20 in general terms.	UP-9134 R2	RD	57	
UNIVERSAL TERMINAL SYSTEM 20 (UTS 20) SINGLE STATION System Reference Contains information that must be considered when programming a host processing system for use with the UTS 20.	UP-9136	RD	203	
UNIVERSAL TERMINAL SYSTEM 20W (UTS 20W), WORKSTATION Installation and Verification Guide Contains procedures for installing the UTS 20W workstation (including keyboard) and magnetic stripe reader and for checking basic operation of these units.	UP-9157.1	SLI	85	
UNIVERSAL TERMINAL SYSTEM 40 (UTS 40) SINGLE STATION Operator's Guide Contains complete operating instructions for the UTS 40 in operator-oriented language. Includes new information on an alternate method for offline loading a program from a diskette subsystem.	UP-9142 R1	RD	196	
UPDATE PACKAGE A Includes information on: the low-profile keyboard; models 25B, 35, and 31 printers; the double-sided diskette subsystem; and the RS-232 interface.	UP-9142 R1-A		58	‡
UNIVERSAL TERMINAL SYSTEM 40 (UTS 40) SINGLE STATION System Description Describes the UTS 40 terminal including: characteristics; configurations; specifications; terminal system applications; and peripheral/auxiliary devices.	UP-9141 R3	RD	41	‡

‡ Denotes items added or changed since the last issue of this summary.

TITLE AND DESCRIPTION	DOC. NO.	TYPE	NO. PAGES	STATUS
UNIVERSAL TERMINAL SYSTEM 40 (UTS 40) SINGLE STATION System Reference	UP-9143	RD	210	
Contains information that must be considered when programming a host processing system for use with the UTS 40.				
UPDATE PACKAGE A	UP-9143-A		17	
Provides information concerning changes in the power-on confidence (POC) display and in the control page information. Includes other minor technical changes.				
UPDATE PACKAGE B	UP-9143-B		7	
Provides a brief description of the UTS 40 CP/M program product.				
UNIVERSAL TERMINAL SYSTEM 40W (UTS 40W) WORKSTATION Operator's Guide	UP-9366	SLI	158	
Provides an overview of traditional data processing terminology and describes the role of each device used in the cluster controller. Focuses on the identification and function of UTS 40W controls, indicators, and keyboard keys required to perform user tasks. Also provides information on the interaction of the UTS 40W with the cluster controller, peripheral and auxiliary devices, user programs, and the host processor.				
UNIVERSAL TERMINAL SYSTEM 400 (UTS 400) Operator's Guide (Includes UPDATE PACKAGE A)	UP-8358 R1	SLI	268	
Describes operator duties for using the UTS 400, including operator controls for the keyboard and panel. Describes screen displays in all applications, use of the tape cassette, diskette subsystem, printers, and magnetic stripe reader. Provides information in update package A on use of the 0791 correspondence quality printer subsystem with the UTS 400.				
UPDATE PACKAGE A	UP-8358 R1-A		59	
Provides information on use of the 0791 correspondence quality printer subsystem with the UTS 400.				
UPDATE PACKAGE B	UP-8358 R1-B		19	
Provides instructions for operating the cut-sheet feeder with the 0791 correspondence quality printer used with the UTS 400.				
UNIVERSAL TERMINAL SYSTEM 400 (UTS 400) Programmer Reference	UP-8359 R1	RD	276	
Provides a brief functional description of the UTS 400. Includes programmer information on communications protocol, UTS 400 and host processor intercommunications, and user programmability.				

TITLE AND DESCRIPTION	DOC. NO.	TYPE	NO. PAGES	STATUS
UNIVERSAL TERMINAL SYSTEM 400 (UTS 400) System Description	UP-8357 R2	SLI	73	
Explains concepts and design philosophy, describes attributes and capabilities, and provides system configurations and functional descriptions. Defines programmability, peripheral device selection, and terminal applications.				
UNIVERSAL TERMINAL SYSTEMS 400/4000 (UTS 400/4000) TO OS/3 INTERFACE User Guide/Programmer Reference	UP-8611	SLI	79	
Describes how an applications programmer can load or dump a UTS 400 terminal from an OS/3 system. Covers how to transcribe UTS 400 programs in OS/3 files, compile and link them, and store them for downline loading; how to load and upline dump a UTS 400 program; and various character protection features.				
UPDATE PACKAGE A	UP-8611-A		33	
Describes an interactive services capability to downline load and upline dump a UTS 4000 terminal.				
UPDATE PACKAGE B	UP-8611-B		17	
Provides for OS/3 Release 8.0: addition to the upline print dump and delete (UPLDUMP) command and the interactive services downline load command.				
UNIVERSAL TERMINAL SYSTEM 400 (UTS 400), COBOL Programmer Reference	UP-8481 R2	SLI	196	
Conforms to the requirements of American National Standard COBOL, X3.23-1974, the specification of the American National Standards Institute and describes modules and levels implemented. Includes specifications for the UTS COBOL features of screen management, interactive data entry, and unique input/output support.				
UPDATE PACKAGE A	UP-8481 R2-A		77	
Contains an index for the manual and minor technical corrections.				
UNIVERSAL TERMINAL SYSTEM 400 (UTS 400), EDIT PROCESSOR User Guide/Programmer Reference	UP-9076	SLI	26	
Describes the UTS 400 edit processor (editor), a stand-alone utility that enables the user to do offline editing of text lines. Is line-oriented, which permits the user to conversationally insert, delete, and replace text on a diskette and can be used on up to two terminals per cluster. Includes routines to interface with diskettes in standard UTS 400 firmware format and to send data to a host computer.				
UNIVERSAL TERMINAL SYSTEM 400 (UTS 400), UTILITY LIBRARY Programmer Reference	UP-8483 R1	SLI	73	
Discusses the following nine utility library routines: arithmetic; data manipulation; conversion; debug routine; screen management; peripheral I/O; 3741 diskette media compatibility; arithmetic floating point package; and UTS 400 character-protection mode.				
UNIVERSAL TERMINAL SYSTEM 4000 (UTS 4000), COBOL Program Product Specification	UP-9258.9	SLI	2	

TITLE AND DESCRIPTION	DOC. NO.	TYPE	NO. PAGES	STATUS
UNIVERSAL TERMINAL SYSTEM 4000 (UTS 4000), COBOL Programmer Reference	UP-9377 R1	SLI	243	‡
Conforms to the requirements of American National Standard COBOL, X3.23-1974, the specification of the American National Standards Institute and describes modules and levels implemented. Includes specifications for the UTS COBOL features of screen management, interactive data entry, and unique input/output support.				
UNIVERSAL TERMINAL SYSTEM 4000 (UTS 4000) COBOL 2R2 SYSTEM RELEASE DESCRIPTION See SYSTEM RELEASE DESCRIPTIONS.	UP-9289.5	SLI	12	
UNIVERSAL TERMINAL SYSTEM 4000 (UTS 4000), LOADABLE CHARACTER SET GENERATOR Program Product Specification	UP-9220.4	SLI	2	
UNIVERSAL TERMINAL SYSTEM 4000 (UTS 4000), SCS, UTS 400 MODE Program Product Specification	UP-9220.10	SLI	4	
UNIVERSAL TERMINAL SYSTEM 4020 (UTS 4020) CLUSTER CONTROLLER System Description	UP-9149 R2		72	
Describes the SPERRY Universal Terminal System 4020 (UTS 4020) Cluster Controller, which acts as an interface between the terminal system and host processor. Also controls workstations and peripherals connected to the controller.				
UNIVERSAL TERMINAL SYSTEM 4020 (UTS 4020) CLUSTER CONTROLLER System Reference	UP-9150	RD	144	
Contains information that must be considered when programming a host processing system for use with the UTS 4020 system.				
UTS 40D LOCAL WORKSTATION WITH AUXILIARY PRINTER FOR SYSTEM 80 SYSTEM ENHANCEMENT E8C See SYSTEM ENHANCEMENTS.	UP-9280.12	SLI	23	
UTS 40D LOCAL WORKSTATION WITH AUXILIARY PRINTER FOR SYSTEM 80 SYSTEM RELEASE ANNOUNCEMENT E8C See SYSTEM RELEASE ANNOUNCEMENTS.	UP-9280.11	SLI	9	
UTS 400/UTS 4000/SLCA LOAD/DUMP TERMINAL FACILITY Program Product Specification	UP-9265.39	SLI	2	
VOCABULARY FOR INFORMATION PROCESSING	UD1-1604	SLI	164	
WORKSTATION - SYSTEM 80 Site Preparation Guide	UP-8911	SLI	30	
Provides site preparation and environmental considerations and lists power requirements for foreign countries. Describes communications, cabling, and space considerations and includes a checklist for recommended site planning and preparation.				

‡ Denotes items added or changed since the last issue of this summary.

3. Numerical Listing

DOC. NO.	TITLE AND DESCRIPTION	TYPE	NO. PAGES	STATUS
UD1-572	PRESENTATION FOLDER	RD		
UD1-723	FLOWCHART TEMPLATE AND BOOKLET (REV. 3-73)	SLI		
UD1-745	FORMS: SOFTWARE USER REPORT (SUR) 5-PART FORM	SLI		
UD1-787	FOLDERS: PRINTOUT AND LISTING FOLDER	RD		
UD1-905	FORMS: COBOL PROGRAMMING FORM 11" x 16" (50 SHEETS/PAD)	RD		
UD1-1108	FORMS: PRINTER, HIGH SPEED, FORMAT SHEET 11" x 16" (50 SHEETS/PAD)	RD		
UD1-1156	FORMS: FORTRAN PROGRAMMING FORM 8-1/2" x 14" (50 SHEETS/PAD)	RD		
UD1-1164	FORMS: REPORT PROGRAM GENERATOR II INPUT FORMAT SPECIFICATION 11" x 16" (50 SHEETS/PAD)	RD		
UD1-1165	FORMS: REPORT PROGRAM GENERATOR II OUTPUT FORMAT SPECIFICATION 11" x 16" (50 SHEETS/PAD)	RD		
UD1-1166	FORMS: REPORT PROGRAM GENERATOR II CONTROL CARD AND FILE SPECIFICATION 11" x 16" (50 SHEETS/PAD)	RD		
UD1-1167	FORMS: REPORT PROGRAM GENERATOR II CALCULATION SPECIFICATION 11" x 16" (50 SHEETS/PAD)	RD		
UD1-1170	FORMS: REPORT PROGRAM GENERATOR II FILE EXTENSION AND LINE CONTROL SPECIFICATION 11" x 16" (50 SHEETS/PAD)	RD		
UD1-1171	FORMS: REPORT PROGRAM GENERATOR II TELECOMMUNICATIONS SPECIFICATION 11" x 16" (50 SHEETS/PAD)	RD		
UD1-1195	FORMS: TECHNICAL QUESTIONS, QUESTION AND ANSWER FORM 8-1/2" x 11" (50 SHEETS/PAD)	RD		
UD1-1548	FORM: ASSEMBLER CODING, 8-1/2" x 11" (50 SHEETS/PAD)	RD		
UD1-1604	VOCABULARY FOR INFORMATION PROCESSING	SLI	164	
UD1-1628	FORMS: REPORT PROGRAM GENERATOR PRINTER FORMAT CHART R. 3-70 8-1/2" x 11" (50 SHEETS/PAD)	RD		

DOC. NO.	TITLE AND DESCRIPTION	TYPE	NO. PAGES	STATUS
UD1-1819	FORMS: KEYPUNCH FORM, GENERAL 11" x 17" (50 SHEETS/PAD)	RD		
UP-7536 R1	FORTRAN, FUNDAMENTALS OF Programmer Reference	SLI	182	
UP-7536 R1-A	UPDATE PACKAGE A		17	
UP-7536 R1-B	UPDATE PACKAGE B		6	
UP-7536 R1-C	UPDATE PACKAGE C		6	
UP-7536 R1-D	UPDATE PACKAGE D		27	
UP-7536 R1-E	UPDATE PACKAGE E		6	
UP-7788 R2	UNISCOPE DISPLAY TERMINAL Operator Reference	SLI	26	
UP-7788 R2-A	UPDATE PACKAGE A		32	
UP-7807 R2	UNISCOPE DISPLAY TERMINAL Programmer Reference	RD	175	
UP-8022 R5	DATA BASE MANAGEMENT SYSTEM (DMS) DATA DESCRIPTION LANGUAGE User Guide/Programmer Reference	SLI	112	
UP-8030 R2	ASSEMBLER Introduction	SLI	26	
UP-8036 R5	DATA BASE MANAGEMENT SYSTEM (DMS) DATA MANIPULATION LANGUAGE User Guide/Programmer Reference	SLI	210	
UP-8036 R5-A	UPDATE PACKAGE A		24	‡
UP-8044 R3	REPORT PROGRAM GENERATOR II (RPG II) Programmer Reference	SLI	254	
UP-8044 R3-A	UPDATE PACKAGE A		74	
UP-8044 R3-B	UPDATE PACKAGE B		9	
UP-8044 R3-C	UPDATE PACKAGE C		23	
UP-8065 R9	JOB CONTROL User Guide	SLI	339	
UP-8065 R9-A	UPDATE PACKAGE A		32	
UP-8067 R6	REPORT PROGRAM GENERATOR II (RPG II) User Guide	SLI	751	
UP-8067 R6-A	UPDATE PACKAGE A		174	

‡ Denotes items added or changed since the last issue of this summary.

DOC. NO.	TITLE AND DESCRIPTION	TYPE	NO. PAGES	STATUS
UP-8067 R6-B	UPDATE PACKAGE B		95	
UP-8067 R6-C	UPDATE PACKAGE C		86	
UP-8067 R6-D	UPDATE PACKAGE D		50	‡
UP-8073 R2	SORT/MERGE Introduction	SLI	20	
UP-8076 R11	SYSTEM MESSAGES Programmer/Operator Reference	SLI	710	
UP-8076 R11-A	UPDATE PACKAGE A		48	‡
UP-8155	UNISCOPE DISPLAY TERMINAL Concept and Applications	SLI	54	
UP-8194 R7	INTEGRATED COMMUNICATIONS ACCESS METHOD (ICAM) Concepts and Facilities	SLI	233	
UP-8194 R7-A	UPDATE PACKAGE A		6	
UP-8194 R7-B	UPDATE PACKAGE B		48	
UP-8208 R2	MAGNETIC TAPE SUBSYSTEMS Media	SLI	40	‡
UP-8217 R8	JOB CONTROL Programmer Reference	SLI	213	
UP-8217 R8-A	UPDATE PACKAGE A		20	
UP-8250 R3	PRINTER, 0776 Operator Reference	SLI	59	
UP-8250 R3-A	UPDATE PACKAGE		5	‡
UP-8253 R4	REPORT PROGRAM GENERATOR II (RPG II) Summary	SLI	1	
UP-8269 R7	INTEGRATED COMMUNICATIONS ACCESS METHOD (ICAM) Programmer Reference	SLI	502	
UP-8269 R7-A	UPDATE PACKAGE A		61	
UP-8269 R7-B	UPDATE PACKAGE B		79	
UP-8272 R4	DATA BASE MANAGEMENT SYSTEM (DMS) SYSTEM SUPPORT FUNCTIONS User Guide/Programmer Reference	SLI	219	
UP-8272 R4-A	UPDATE PACKAGE A		101	
UP-8339	TERMINAL PRINTER, MODEL 800, TYPE 0774 Component Description	SLI	49	

‡ Denotes items added or changed since the last issue of this summary.

DOC. NO.	TITLE AND DESCRIPTION	TYPE	NO. PAGES	STATUS
UP-8343 R1	DISK DRIVES, 8405/8430/8433 Operator Reference	SLI	28	
UP-8354 R3	PRINTER, 0776 General Description	SLI	84	
UP-8357 R2	UNIVERSAL TERMINAL SYSTEM 400 (UTS 400) System Description	SLI	73	
UP-8358 R1	UNIVERSAL TERMINAL SYSTEM 400 (UTS 400) Operator's Guide (Includes UPDATE PACKAGE A)	SLI	268	
UP-8358 R1-A	UPDATE PACKAGE A		59	
UP-8358 R1-B	UPDATE PACKAGE B		19	
UP-8359 R1	UNIVERSAL TERMINAL SYSTEM 400 (UTS 400) Programmer Reference	RD	276	
UP-8361 R1	DISK DRIVES, 8416/8418 Operator Reference	RD	23	
UP-8364 R7	INFORMATION MANAGEMENT SYSTEM (IMS), SYSTEM SUPPORT FUNCTIONS User Guide	SLI	303	
UP-8364 R7-A	UPDATE PACKAGE A		44	
UP-8364 R7-B	UPDATE PACKAGE B		90	
UP-8364 R7-C	UPDATE PACKAGE C		25	‡
UP-8364 R7-D	UPDATE PACKAGE D		42	‡
UP-8376 R8	SYSTEM OPERATIONS Summary	SLI	187	
UP-8379 R4	SYSTEM/3 TO OS/3 TRANSITION User Guide/Programmer Reference	SLI	193	
UP-8379 R4-A	UPDATE PACKAGE A		71	
UP-8388	CARD PUNCH, 0608 Media and Expendable Supplies	SLI	12	
UP-8390	CARD READER, 0719 Media and Expendable Supplies	SLI	12	
UP-8424	INTEGRATED COMMUNICATIONS ACCESS METHOD (ICAM), INTERFACING A REMOTE DEVICE HANDLER Programmer Reference	RD	133	
UP-8430	BINDER, THREE RING, FOR 8-½" x 4" PAGES, 3/4" RINGS	RD		

‡ Denotes items added or changed since the last issue of this summary.

DOC. NO.	TITLE AND DESCRIPTION	TYPE	NO. PAGES	STATUS
UP-8441 R3	0776 PRINTER Reference	RD	124	
UP-8445 R1	PRINTER, 0776 Media and Expendable Supplies	SLI	19	
UP-8470	TERMINAL PRINTER, MODEL 800, TYPE 0774-07, 08 Operator Guide	SLI	57	
UP-8471	TERMINAL PRINTER, MODEL 800, TYPE 0774-07, 08 General Description	SLI	33	
UP-8475	DISKETTE, 8406 General Description	SLI	22	
UP-8476	DISKETTE SUBSYSTEM, 8406 Operator's Guide	RD	25	
UP-8481 R2	UNIVERSAL TERMINAL SYSTEM 400 (UTS 400), COBOL Programmer Reference	SLI	196	
UP-8481 R2-A	UPDATE PACKAGE A		77	
UP-8483 R1	UNIVERSAL TERMINAL SYSTEM 400 (UTS 400), UTILITY LIBRARY Programmer Reference	SLI	73	
UP-8495	PRINTER, 0786 General Description	SLI	23	
UP-8496 R1	PRINTER, 0786 Operator's Guide	SLI	30	
UP-8515 R1	OS/4 TO OS/3 COMMUNICATIONS CONVERSION User Guide/Programmer Reference	SLI	89	
UP-8516 R1	OS/4 TO OS/3 ASSEMBLER PROGRAM TRANSLATOR User Guide/Programmer Reference	SLI	313	
UP-8549 R4	INTEGRATED COMMUNICATIONS ACCESS METHOD (ICAM), DIRECT DATA INTERFACE (DDI) User Guide	RD	176	
UP-8549 R4-A	UPDATE PACKAGE A		66	
UP-8550 R5	INTEGRATED COMMUNICATIONS ACCESS METHOD (ICAM), STANDARD MCP (STMCP) INTERFACE User Guide	RD	328	
UP-8550 R5-A	UPDATE PACKAGE A		122	
UP-8550 R5-B	UPDATE PACKAGE B		47	‡
UP-8552 R6	INTEGRATED COMMUNICATIONS ACCESS METHOD (ICAM), UTILITIES User Guide	SLI	171	

‡ Denotes items added or changed since the last issue of this summary.

DOC. NO.	TITLE AND DESCRIPTION	TYPE	NO. PAGES	STATUS
UP-8553 R1	OS/4 TO OS/3 CONVERSION GUIDE User Guide/Programmer Reference	SLI	129	
UP-8573	BINDER, THREE RING, FOR 8-½" x 4" PAGES, 1-¼" RINGS	RD		
UP-8573.1	EASEL, 8-½" x 4", FOR USE IN BINDERS UP-8430 AND UP-8573	RD		
UP-8589 R1	OS/4 TO OS/3 JOB CONTROL CONVERSION UTILITY User Guide/Programmer Reference	SLI	107	
UP-8593	DISKETTE, FLEXIBLE, SINGLE-SIDED Media	SLI	14	
UP-8596 R1	OS/4 TO OS/3 CONVERSION Introduction	SLI	29	
UP-8605.11	TECHNICAL BULLETIN #11	SLI	16	
UP-8605.12 R1	TECHNICAL BULLETIN #12	SLI	15	
UP-8609-A	MAGNETIC TAPE SUBSYSTEM, 0871 Operator Reference	SLI	27	
UP-8609	UPDATE PACKAGE A		5	
UP-8611	UNIVERSAL TERMINAL SYSTEMS 400/4000 (UTS 400/4000) TO OS/3 INTERFACE User Guide/Programmer Reference	SLI	79	
UP-8611-A	UPDATE PACKAGE A		33	
UP-8611-B	UPDATE PACKAGE B		17	
UP-8612 R3	COBOL, 1974 AMERICAN NATIONAL STANDARD Summary	SLI	48	
UP-8612 R3-A	UPDATE PACKAGE A		13	
UP-8613 R2	COBOL, 1974 AMERICAN NATIONAL STANDARD Programmer Reference	SLI	413	
UP-8613 R2-A	UPDATE PACKAGE A		40	
UP-8613 R2-B	UPDATE PACKAGE B		83	
UP-8613 R2-C	UPDATE PACKAGE C		42	‡
UP-8617 R1	CARD READER, 0719 Operator Reference	SLI	24	
UP-8619	CARD READER, 0719 General Description	SLI	12	
UP-8699 R2	DISKETTE, 8420/8422 General Description	SLI	29	

‡ Denotes items added or changed since the last issue of this summary.

DOC. NO.	TITLE AND DESCRIPTION	TYPE	NO. PAGES	STATUS
UP-8700	BINDER, THREE RING, FOR 8-½" x 11" PAGES, 3-½" RINGS	RD		
UP-8742 R1	I/O INTEGRATED CONTROLLERS Programmer Reference	RD	235	
UP-8742 R1-A	UPDATE PACKAGE A		34	
UP-8748 R1	INFORMATION MANAGEMENT SYSTEM (IMS) TO DMS INTERFACE User Guide	SLI	107	
UP-8748 R1-A	UPDATE PACKAGE A		23	
UP-8748 R1-B	UPDATE PACKAGE B		30	
UP-8800 R1	SYSTEM 80 System Description	SLI	121	
UP-8801	BASIC Introduction	SLI	20	
UP-8802 R2	SCREEN FORMAT SERVICES Concepts and Facilities	SLI	191	
UP-8802 R2-A	UPDATE PACKAGE A		48	
UP-8803 R2	REPORT PROGRAM GENERATOR II (RPG II) EDITOR User Guide/Programmer Reference	SLI	96	
UP-8803 R2-A	UPDATE PACKAGE A		18	
UP-8804 R1	COBOL, 1974 AMERICAN NATIONAL STANDARD Introduction	SLI	27	
UP-8805	COBOL, 1974 AMERICAN NATIONAL STANDARD Fundamentals	SLI	273	
UP-8805-A	UPDATE PACKAGE A		6	
UP-8805-B	UPDATE PACKAGE B		7	
UP-8806	DIALOG SPECIFICATION LANGUAGE User Guide/Programmer Reference	SLI	234	
UP-8806-A	UPDATE PACKAGE A		49	
UP-8806-B	UPDATE PACKAGE B		43	
UP-8808	DATA BASE MANAGEMENT SYSTEM (DMS) Introduction	SLI	24	
UP-8811 R2	DISTRIBUTED DATA PROCESSING Concepts and Facilities	SLI	201	‡

‡ Denotes items added or changed since the last issue of this summary.

DOC. NO.	TITLE AND DESCRIPTION	TYPE	NO. PAGES	STATUS
UP-8812 R3	SYSTEM ACTIVITY MONITOR User Guide/Programmer Reference	SLI	79	
UP-8813	FORTRAN IV Introduction	SLI	17	
UP-8814	FORTRAN IV Programmer Reference	SLI	230	
UP-8814-A	UPDATE PACKAGE A		20	
UP-8814-B	UPDATE PACKAGE B		33	
UP-8814-C	UPDATE PACKAGE C		6	
UP-8814-D	UPDATE PACKAGE D		9	
UP-8814-E	UPDATE PACKAGE E		18	‡
UP-8815	FORTRAN IV Summary	SLI	63	
UP-8815-A	UPDATE PACKAGE A		6	
UP-8816	INFORMATION MANAGEMENT SYSTEM (IMS) Introduction	SLI	23	
UP-8818	REPORT PROGRAM GENERATOR II (RPG II) Introduction	SLI	28	
UP-8819 R2	INDEPENDENT SORT/MERGE User Guide/Programmer Reference	SLI	133	
UP-8819 R2-A	UPDATE PACKAGE A		8	‡
UP-8820 R2	INSTALLATION VERIFICATION PROCEDURES User Guide/Programmer Reference	SLI	222	
UP-8820 R2-A	UPDATE PACKAGE A		29	
UP-8821	JOB CONTROL Introduction	SLI	28	
UP-8823 R1	SECURITY MAINTENANCE UTILITY User Guide/Programmer Reference	SLI	28	
UP-8824	CONSOLIDATED DATA MANAGEMENT Introduction	SLI	21	
UP-8825 R1	CONSOLIDATED DATA MANAGEMENT Concepts and Facilities	SLI	122	
UP-8825 R1-A	UPDATE PACKAGE A		24	

‡ Denotes items added or changed since the last issue of this summary.

DOC. NO.	TITLE AND DESCRIPTION	TYPE	NO. PAGES	STATUS
UP-8825 R1-B	UPDATE PACKAGE B		14	
UP-8826 R1	CONSOLIDATED DATA MANAGEMENT MACROINSTRUCTIONS User Guide/Programmer Reference	SLI	185	
UP-8827	GENERAL EDITOR (EDT) Introduction	SLI	21	
UP-8828 R2	GENERAL EDITOR (EDT) User Guide/Programmer Reference	SLI	270	
UP-8828 R2-A	UPDATE PACKAGE A		101	
UP-8830	SUPERVISOR Introduction	SLI	18	
UP-8831 R2	SUPERVISOR Concepts and Facilities	SLI	72	
UP-8832	SUPERVISOR MACROINSTRUCTIONS Programmer Reference	SLI	255	
UP-8832-A	UPDATE PACKAGE A		41	
UP-8832-B	UPDATE PACKAGE B		42	
UP-8832-C	UPDATE PACKAGE C		5	
UP-8832-D	UPDATE PACKAGE D		14	
UP-8833	DATA UTILITIES Introduction	SLI	16	
UP-8834 R2	DATA UTILITIES User Guide/Programmer Reference	SLI	136	
UP-8834 R2-A	UPDATE PACKAGE A		27	
UP-8836 R2	SORT3 User Guide/Programmer Reference	SLI	87	
UP-8836 R2-A	UPDATE PACKAGE A		10	‡
UP-8837	DUMP ANALYSIS User Guide/Programmer Reference	SLI	91	
UP-8837-A	UPDATE PACKAGE A		33	
UP-8837-B	UPDATE PACKAGE B		33	
UP-8838	SYSTEM INSTALLATION Introduction	SLI	19	

‡ Denotes items added or changed since the last issue of this summary.

DOC. NO.	TITLE AND DESCRIPTION	TYPE	NO. PAGES	STATUS
UP-8839 R4	SYSTEM INSTALLATION User Guide/Programmer Reference	SLI	236	
UP-8839 R4-A	UPDATE PACKAGE A		101	‡
UP-8840	SYSTEM SERVICE PROGRAMS (SSP) Introduction	SLI	27	
UP-8841 R3	SYSTEM SERVICE PROGRAMS (SSP) User Guide	SLI	473	
UP-8841 R3-A	UPDATE PACKAGE A		26	‡
UP-8842 R3	SYSTEM SERVICE PROGRAMS (SSP) Programmer Reference	SLI	142	
UP-8842 R3-A	UPDATE PACKAGE A		12	‡
UP-8843	DISTRIBUTED DATA PROCESSING Introduction	SLI	25	
UP-8844 R1	INTERACTIVE PROCESSING Introduction	SLI	32	
UP-8845 R3	INTERACTIVE SERVICES, COMMANDS AND FACILITIES User Guide/Programmer Reference	SLI	254	
UP-8845 R3-A	UPDATE PACKAGE A		49	
UP-8845 R3-B	UPDATE PACKAGE B		24	
UP-8846 R1	INTEGRATED COMMUNICATIONS ACCESS METHOD (ICAM) Introduction	SLI	51	
UP-8854 R3	ESCORT PROGRAMMING LANGUAGE Introduction	SLI	22	
UP-8855 R3	ESCORT PROGRAMMING LANGUAGE User Guide	SLI	427	
UP-8855 R3-A	UPDATE PACKAGE A		48	‡
UP-8856 R4	ESCORT PROGRAMMING LANGUAGE Summary	SLI	21	
UP-8857	DIALOG PROCESSOR Introduction	SLI	16	
UP-8858 R1	DIALOG PROCESSOR User Guide/Programmer Reference	SLI	39	
UP-8859 R3	OPERATIONS HANDBOOK Operator Reference	SLI	233	

‡ Denotes items added or changed since the last issue of this summary.

DOC. NO.	TITLE AND DESCRIPTION	TYPE	NO. PAGES	STATUS
UP-8859 R3-A	UPDATE PACKAGE A		73	‡
UP-8860 R1	FILE CATALOGING Concepts and Facilities	SLI	86	
UP-8864	IBM SYSTEM/3 TO OS/3 CONVERSION Introduction	SLI	16	
UP-8865 R1	PRINTER, 0798 Installation Guide	SLI	42	
UP-8868 R2	HARDWARE AND SOFTWARE Summary	SLI	391	‡
UP-8869 R2	SPOOLING AND JOB ACCOUNTING Concepts and Facilities	SLI	209	
UP-8869 R2-A	UPDATE PACKAGE A		42	
UP-8869 R2-B	UPDATE PACKAGE B		30	
UP-8870 R1	SYSTEM 80 Concepts and Facilities	SLI	193	
UP-8870 R1-A	UPDATE PACKAGE A		20	
UP-8871	PRINTER, 0798 General Description	SLI	31	
UP-8872	SYSTEM MAINTENANCE FACILITIES Introduction	SLI	17	
UP-8873	SCREEN FORMAT SERVICES Introduction	SLI	23	
UP-8874 R1	INDEX AND PUBLICATIONS GUIDE	SLI	117	
UP-8880 R1	PROCESSOR - SYSTEM 80 Operator Reference	SLI	62	
UP-8880 R1-A	UPDATE PACKAGE A		13	
UP-8880 R1-B	UPDATE PACKAGE B		5	
UP-8881 R1	PROCESSOR - SYSTEM 80 Programmer Reference	RD	203	
UP-8881 R1-A	UPDATE PACKAGE A		10	
UP-8882	PRINTER, 0798 Operator's Guide	SLI	31	
UP-8882-A	UPDATE PACKAGE A		3	

‡ Denotes items added or changed since the last issue of this summary.

DOC. NO.	TITLE AND DESCRIPTION	TYPE	NO. PAGES	STATUS
UP-8882-B	UPDATE PACKAGE B		5	
UP-8890 R1	UNISERVO 10, TYPE 0871, MAGNETIC TAPE Subsystem Reference	RD	49	
UP-8891 R1	UNISERVO 10, TYPE 0871, MAGNETIC TAPE SUBSYSTEM General Description	SLI	23	
UP-8894	CARD PUNCH, 0608 General Description	SLI	24	
UP-8896 R1	CARD PUNCH, 0608 Operator Reference	SLI	32	
UP-8896 R1-A	UPDATE PACKAGE A		17	
UP-8897	PRINTER, 0789 General Description	SLI	54	
UP-8902 R1	MAGNETIC TAPE DRIVES, UNISERVO 22 AND 24 Reference	SLI	60	
UP-8903 R2	MAGNETIC TAPE DRIVES, UNISERVO 22 AND 24 Operator Reference	SLI	36	
UP-8907	PRINTER, 0789 Media and Expendable Supplies	SLI	20	
UP-8908 R1	PRINTER, 0789 Operator Reference	SLI	47	
UP-8909	INPUT/OUTPUT MICROPROCESSOR - SYSTEM 80 Programmer Reference	RD	220	
UP-8910 R1	LOCAL WORKSTATION - SYSTEM 80 Operator Reference	SLI	83	
UP-8911	WORKSTATION - SYSTEM 80 Site Preparation Guide	SLI	30	
UP-8913	ASSEMBLER User Guide	SLI	930	
UP-8913-A	UPDATE PACKAGE A		84	
UP-8913-B	UPDATE PACKAGE B		193	
UP-8913-C	UPDATE PACKAGE C		133	
UP-8913-D	UPDATE PACKAGE D		8	‡
UP-8914	ASSEMBLER Programmer Reference	SLI	372	

‡ Denotes items added or changed since the last issue of this summary.

DOC. NO.	TITLE AND DESCRIPTION	TYPE	NO. PAGES	STATUS
UP-8914-A	UPDATE PACKAGE A		42	
UP-8914-B	UPDATE PACKAGE B		99	
UP-8914-C	UPDATE PACKAGE C		28	
UP-8914-D	UPDATE PACKAGE D		6	‡
UP-8915 R3	SYSTEM 80 Operator Maintenance Guide	SLI	83	
UP-8916 R1	DISK, 8417 General Description	SLI	23	
UP-8917 R1	DISK, 8417 Operator Reference	SLI	18	
UP-8917 R1-A	UPDATE PACKAGE A		9	
UP-8917 R1-B	UPDATE PACKAGE B		5	
UP-8918 R1	DISK, 8419 General Description	SLI	24	
UP-8919 R1	DISK, 8419 Operator Reference	SLI	26	
UP-8919 R1-A	UPDATE PACKAGE A		6	
UP-8919 R1-B	UPDATE PACKAGE B		5	
UP-8938 R2	INTERACTIVE SERVICES, COMMANDS AND FACILITIES Summary	SLI	170	
UP-8938 R2-A	UPDATE PACKAGE A		32	
UP-8938 R2-B	UPDATE PACKAGE B		7	
UP-8945 R1	INTEGRATED COMMUNICATIONS ACCESS METHOD (ICAM), COMMUNICATIONS PHYSICAL INTERFACE (CPI) User Guide	RD	140	
UP-8945 R1-A	UPDATE PACKAGE A		60	
UP-8945 R1-B	UPDATE PACKAGE B		10	
UP-8946	INTEGRATED COMMUNICATIONS ACCESS METHOD (ICAM), MESSAGE PROCESSING PROCEDURE SPECIFICATIONS (MPPS) User Guide	SLI	96	
UP-8946-A	UPDATE PACKAGE A		19	
UP-8947 R3	INTEGRATED COMMUNICATIONS ACCESS METHOD (ICAM), NETWORK DEFINITION AND OPERATIONS User Guide	SLI	342	‡

‡ Denotes items added or changed since the last issue of this summary.

DOC. NO.	TITLE AND DESCRIPTION	TYPE	NO. PAGES	STATUS
UP-8986	SUMMARY OF CURRENT DOCUMENTATION	SLI	104	‡
UP-8987	IBM SYSTEM/32-SYSTEM/34 TO SYSTEM 80 TRANSITION Introduction	SLI	24	
UP-8990	INTEGRATED COMMUNICATIONS ACCESS METHOD (ICAM) REMOTE TERMINAL PROCESSOR (RTP) User Guide	SLI	77	
UP-8997	INDEX TABS, SYSTEM 80	SLI	86	
UP-9009 R4	DATA BASE MANAGEMENT SYSTEM (DMS) Summary	SLI	51	
UP-9040 R1	PRINTER, 0791, CORRESPONDENCE QUALITY General Description	SLI	27	
UP-9068	DOCUMENTATION RELEASE STATUS, RELEASE 8.1	SLI	41	
UP-9072 R1	SORT/MERGE MACROINSTRUCTIONS User Guide/Programmer Reference	SLI	142	
UP-9072 R1-A	UPDATE PACKAGE A		10	‡
UP-9076	UNIVERSAL TERMINAL SYSTEM 400 (UTS 400), EDIT PROCESSOR User Guide/Programmer Reference	SLI	26	
UP-9106	COBOL EDITOR User Guide/Programmer Reference	SLI	157	
UP-9109	BASIC User Guide	SLI	311	‡
UP-9134 R2	UNIVERSAL TERMINAL SYSTEM 20 (UTS 20) SINGLE STATION System Description	RD	57	
UP-9135 R1	UNIVERSAL TERMINAL SYSTEM 20 (UTS 20) SINGLE STATION Operator's Guide	RD	99	
UP-9135 R1-A	UPDATE PACKAGE A		11	
UP-9136 R1	UNIVERSAL TERMINAL SYSTEM 20 (UTS 20) SINGLE STATION System Reference	RD	203	
UP-9137 R1	UNIVERSAL TERMINAL SYSTEM 20 (UTS 20) SINGLE STATION Ordering Guide	RD	30	
UP-9140 R1	UNIVERSAL TERMINAL SYSTEM 20 (UTS 20) SINGLE STATION Installation Guide	RD	33	‡
UP-9141 R3	UNIVERSAL TERMINAL SYSTEM 40 (UTS 40) SINGLE STATION System Description	RD	41	‡

‡ Denotes items added or changed since the last issue of this summary.

DOC. NO.	TITLE AND DESCRIPTION	TYPE	NO. PAGES	STATUS
UP-9142 R1	UNIVERSAL TERMINAL SYSTEM 40 (UTS 40) SINGLE STATION Operator's Guide	RD	196	
UP-9142 R1-A	UPDATE PACKAGE A		58	‡
UP-9143	UNIVERSAL TERMINAL SYSTEM 40 (UTS 40) SINGLE STATION System Reference	RD	210	
UP-9143-A	UPDATE PACKAGE A		17	
UP-9143-B	UPDATE PACKAGE B		7	‡
UP-9149 R2	UNIVERSAL TERMINAL SYSTEM 4020 (UTS 4020) CLUSTER CONTROLLER System Description	RD	72	
UP-9150	UNIVERSAL TERMINAL SYSTEM 4020 (UTS 4020) CLUSTER CONTROLLER System Reference	RD	144	
UP-9157.1	UNIVERSAL TERMINAL SYSTEM 20W (UTS 20W), WORKSTATION Installation and Verification Guide	SLI	85	
UP-9159	PRINTER, 0797 General Description	SLI	21	
UP-9160 R1	PRINTER, 0797 Operator Guide	SLI	28	
UP-9162	PRINTER, 0797 Media and Expendable Supplies	SLI	21	
UP-9163	DISKETTE, 8406, DOUBLE-SIDED General Description	SLI	24	
UP-9164	DISKETTE, 8406, DOUBLE-SIDED Operator's Guide	SLI	27	
UP-9166	DISKETTE, FLEXIBLE, DOUBLE-SIDED Media	SLI	27	
UP-9167	PRINTER, 0789 Subsystem Reference	RD	52	
UP-9168 R2	BASIC Programmer Reference	SLI	202	
UP-9168 R2-A	UPDATE PACKAGE A		40	‡
UP-9168 R2-B	UPDATE PACKAGE B		26	‡
UP-9169 R4	BASIC Summary	SLI	15	‡

‡ Denotes items added or changed since the last issue of this summary.

DOC. NO.	TITLE AND DESCRIPTION	TYPE	NO. PAGES	STATUS
UP-9205	INFORMATION MANAGEMENT SYSTEM (IMS) Concepts and Facilities	SLI	213	
UP-9205-A	UPDATE PACKAGE A		101	
UP-9205-B	UPDATE PACKAGE B		54	‡
UP-9205-C	UPDATE PACKAGE C		20	‡
UP-9205-D	UPDATE PACKAGE D		23	‡
UP-9206	INFORMATION MANAGEMENT SYSTEM (IMS) ACTION PROGRAMMING IN RPG II User Guide	SLI	289	
UP-9206-A	UPDATE PACKAGE A		8	
UP-9206-B	UPDATE PACKAGE B		16	‡
UP-9206-C	UPDATE PACKAGE C		35	‡
UP-9207	INFORMATION MANAGEMENT SYSTEM (IMS) ACTION PROGRAMMING IN COBOL AND BASIC ASSEMBLY LANGUAGE (BAL) User Guide	SLI	562	
UP-9207-A	UPDATE PACKAGE A		59	
UP-9207-B	UPDATE PACKAGE B		45	
UP-9207-C	UPDATE PACKAGE C		43	
UP-9207-D	UPDATE PACKAGE D		13	‡
UP-9208	INFORMATION MANAGEMENT SYSTEM (IMS) Terminal Users Guide	SLI	151	
UP-9208-A	UPDATE PACKAGE A		18	
UP-9208-B	UPDATE PACKAGE B		31	
UP-9208-C	UPDATE PACKAGE C		14	‡
UP-9209	INFORMATION MANAGEMENT SYSTEM (IMS) DATA DEFINITION AND UNIQUE User Guide	SLI	175	
UP-9209-A	UPDATE PACKAGE A		25	
UP-9209-B	UPDATE PACKAGE B		6	‡
UP-9210.4	SINGLE LINE COMMUNICATIONS ADAPTER-2 (SLCA-2) System Release Announcement (SRA)	SLI	9	
UP-9220.4	UNIVERSAL TERMINAL SYSTEM 4000 (UTS 4000), LOADABLE CHARACTER SET GENERATOR Program Product Specification	SLI	2	

‡ Denotes items added or changed since the last issue of this summary.

DOC. NO.	TITLE AND DESCRIPTION	TYPE	NO. PAGES	STATUS
UP-9220.10	UNIVERSAL TERMINAL SYSTEM 4000 (UTS 4000), SCS, UTS 400 MODE Program Product Specification	SLI	4	
UP-9220.12	UNIVERSAL TERMINAL SYSTEM (UTS), DISKETTE FILE UTILITY Program Product Specification	SLI	2	
UP-9258.5	UNIVERSAL TERMINAL SYSTEM (UTS), COBOL (SYSTEM 80) Program Product Specification	SLI	3	
UP-9258.9	UNIVERSAL TERMINAL SYSTEM 4000 (UTS 4000), COBOL Program Product Specification	SLI	2	
UP-9265.1 R2	IBM 3270 REMOTE TERMINAL HANDLER Program Product Specification	SLI	4	
UP-9265.2	DATEX-L PUBLIC DATA NETWORK (PDN) Program Product Specification	RD	4	
UP-9265.3 R1	SYSTEM CONTROL SOFTWARE, TYPE NUMBER: 6210-XX Program Product Specification	SLI	6	
UP-9265.7	IMS - SINGLE THREAD Program Product Specification	SLI	6	
UP-9265.8	IMS - MULTITHREAD Program Product Specification	SLI	6	
UP-9265.9	DATA MANAGEMENT SYSTEM (DMS) Program Product Specification	SLI	6	
UP-9265.10	REPORT PROGRAM GENERATOR II (RPG II) GROUP Program Product Specification	SLI	2	
UP-9265.13	COBOL, 1974 AMERICAN NATIONAL STANDARD Program Product Specification	SLI	4	
UP-9265.14	FORTRAN IV Program Product Specification	SLI	4	
UP-9265.15	BASIC Program Product Specification	SLI	4	
UP-9265.16 R1	ESCORT PROGRAMMING LANGUAGE TYPE NUMBER: 6225-XX Program Product Specification	SLI	4	
UP-9265.17	EDITOR, TYPE NUMBER: 6226-XX Program Product Specification	SLI	4	
UP-9265.18	ASSEMBLER Program Product Specification	SLI	4	
UP-9265.19	SORT/MERGE Program Product Specification	SLI	2	

DOC. NO.	TITLE AND DESCRIPTION	TYPE	NO. PAGES	STATUS
UP-9265.20	SORT3 Program Product Specification	SLI	2	
UP-9265.21 R1	ICAM TERMINAL SUPPORT FACILITY Program Product Specification	SLI	4	
UP-9265.22	NINE THOUSAND REMOTE (NTR) Program Product Specification	SLI	2	
UP-9265.28	ONLINE DIAGNOSTICS AND MAINTENANCE Program Product Specification	SLI	4	
UP-9265.29	MENU GENERATOR TYPE NUMBER: 6254-XX Program Product Specification	SLI	2	
UP-9265.30 R2	DDP TRANSFER FACILITY, TYPE NUMBER: 6229-XX Program Product Specification	SLI	6	
UP-9265.31 R2	DCA TERMINATION SYSTEMS Program Product Specification	SLI	2	
UP-9265.32	TRANSPAC PUBLIC DATA NETWORK (PDN) SUPPORT TYPE NUMBER: 6248-XX (FRENCH) Program Product Specification	RD	4	
UP-9265.33	EXTENDED SYSTEM SOFTWARE (ESS) TYPE NUMBER: 6211-XX Program Product Specification	SLI	8	
UP-9265.34	DATEX-P PUBLIC DATA NETWORK (PDN) SUPPORT TYPE NUMBER: 6248-XX (GERMAN) Program Product Specification	RD	4	
UP-9265.35	DATAPAC PUBLIC DATA NETWORK (PDN) SUPPORT TYPE NUMBER: 6248-XX (CANADIAN) Program Product Specification	RD	4	
UP-9265.37	DDX-P PUBLIC DATA NETWORK (PDN) SUPPORT TYPE NUMBER: 6248-XX (JAPANESE) Program Product Specification	RD	4	
UP-9265.39 R1	UTS 400/UTS 4000/SLCA LOAD/DUMP TERMINAL FACILITY Program Product Specification	SLI	2	
UP-9265.40 R1	REMOTE TERMINAL PROCESSOR (RTP), TYPE NUMBER: 6130-XX Program Product Specification	SLI	4	
UP-9265.41	COBOL EDITOR, 1974 AMERICAN NATIONAL STANDARD, TYPE NUMBER: 6222-XX Program Product Specification	SLI	4	
UP-9265.43 R1	IBM 3270 EMULATOR, TYPE NUMBER: 6247-XX Program Product Specification	SLI	4	
UP-9265.44 R2	DDP FILE ACCESS FACILITY, TYPE NUMBER: 6229-XX Program Product Specification	SLI	4	‡
UP-9265.45	IMS-DDP TRANSACTION FACILITY (MULTITHREAD), TYPE NUMBER: 6229-XX Program Product Specification	SLI	2	

‡ Denotes items added or changed since the last issue of this summary.

DOC. NO.	TITLE AND DESCRIPTION	TYPE	NO. PAGES	STATUS
UP-9265.47	PSS PUBLIC DATA NETWORK (PDN) SUPPORT TYPE NUMBER: 6248-XX (UNITED KINGDOM) Program Product Specification	RD	4	
UP-9265.48 R1	NORDIC PUBLIC DATA NETWORK (PDN) SUPPORT TYPE NUMBER: 6248-XX Program Product Specification	RD	4	
UP-9265.50 R1	MAPPER 80 SOFTWARE TYPE NUMBER: 6752-XX Program Product Specification	SLI	4	
UP-9265.52	IBERPAC PUBLIC DATA NETWORK SUPPORT Program Product Specification	SLI	4	‡
UP-9280.3	IBM 3270 EMULATOR System Release Announcement (SRA)	SLI	10	
UP-9280.4	IBM 3270 EMULATOR System Enhancement E8B	SLI	17	
UP-9280.5	NORDIC PDN SUPPORT System Release Announcement (SRA) E8F	SLI	11	
UP-9280.7	DATEX-P PDN SUPPORT System Release Announcement (SRA) E8G	SLI	12	
UP-9280.8	DATEX-P PDN SUPPORT System Enhancement (SE) E8H	SLI	15	
UP-9280.9	IMS-DDP TRANSACTION PROCESSING System Release Announcement (SRA)	SLI	10	
UP-9280.10	IMS-DDP TRANSACTION PROCESSING System Enhancement (SE) E8A	SLI	12	
UP-9280.11	UTS 40D LOCAL WORKSTATION WITH AUXILIARY PRINTER FOR SYSTEM 80 System Release Announcement (SRA) E8C	SLI	9	
UP-9280.12	UTS 40D LOCAL WORKSTATION WITH AUXILIARY PRINTER FOR SYSTEM 80 System Enhancement (SE) E8C	SLI	23	
UP-9280.19	REMOTE TERMINAL PROCESSOR ENHANCEMENT System Release Announcement (SRA) E8E	SLI	12	
UP-9280.20	REMOTE TERMINAL PROCESSOR ENHANCEMENT System Enhancement (SE) E8E	SLI	10	
UP-9280.68	SYSTEM RELEASE ANNOUNCEMENT (SRA), RELEASE 8.1.1	SLI	17	‡
UP-9280.69	SYSTEM RELEASE DESCRIPTION (SRD), RELEASE 8.1.1	SLI	243	‡
UP-9280.70	SYSTEM RELEASE ANNOUNCEMENT (SRA), RELEASE 8.2	SLI	17	
UP-9280.71	SYSTEM RELEASE DESCRIPTION (SRD), RELEASE 8.2	SLI	223	

‡ Denotes items added or changed since the last issue of this summary.

DOC. NO.	TITLE AND DESCRIPTION	TYPE	NO. PAGES	STATUS
UP-9280.80	FILE TRANSFER UTILITY (PCTRAN) SYSTEM RELEASE ANNOUNCEMENT (SRA) E8M	SLI	10	‡
UP-9280.81	FILE TRANSFER UTILITY (PCTRAN) SYSTEM ENHANCEMENT (SE) E8M	SLI	27	‡
UP-9280.85	MAPPER 80 VERSION 3.0 FOR SYSTEM 80 SYSTEM RELEASE ANNOUNCEMENT (SRA)	SLI	10	‡
UP-9280.86	MAPPER 80 VERSION 3.0 FOR SYSTEM 80 SYSTEM ENHANCEMENT (SE)	SLI	19	‡
UP-9289.1	UNIVERSAL TERMINAL SYSTEM (UTS), COBOL 2R1 Component SRD (CSRD)	SLI	72	
UP-9280.1-A	UPDATE PACKAGE A		8	
UP-9289.2	UNIVERSAL TERMINAL SYSTEM (UTS), COBOL 2R1 Component SRA (CSRA)	SLI	12	
UP-9289.5	UNIVERSAL TERMINAL SYSTEM 4000 (UTS 4000), COBOL 2R2 System Release Description	SLI	12	
UP-9316	MENU SERVICES Introduction	SLI	37	
UP-9317 R1	MENU SERVICES Concepts and Facilities	SLI	134	‡
UP-9318	SYSTEM/32, 34 TO OS/3 CONVERSION User Guide	SLI	102	
UP-9355	TERMINAL MULTIPLEXER, 8609/8610, DIRECT CONNECTION MODULE Site Preparation Guide	SLI	62	
UP-9358	TERMINAL MULTIPLEXER, 8609 Deinstallation and Packing Guide	SLI	18	
UP-9361	DIRECT CONNECTION MODULE, 8610 Deinstallation and Repacking Guide	SLI	11	
UP-9366	UNIVERSAL TERMINAL SYSTEM 40W (UTS 40W) WORKSTATION Operator's Guide	SLI	158	
UP-9377 R1	UNIVERSAL TERMINAL SYSTEM 4000 (UTS 4000), COBOL Programmer Reference	SLI	243	‡
UP-9381	STREAMING MAGNETIC TAPE DRIVE, 3782 Operator Reference	SLI	34	
UP-9381-A	UPDATE PACKAGE A		5	
UP-9382	MAGNETIC TAPE DRIVE, 3782 STREAMING General Description	RD	19	

‡ Denotes items added or changed since the last issue of this summary.

DOC. NO.	TITLE AND DESCRIPTION	TYPE	NO. PAGES	STATUS
UP-9386	MODEL 8 - SYSTEM 80 System Description	SLI	137	
UP-9502	NTR UTILITY User Guide	SLI	81	
UP-9502-A	UPDATE PACKAGE A		38	‡
UP-9537	MARKETING CENTRAL SOFTWARE SUPPORT Procedure Manual	SLI	24	‡
UP-9577	MODELS 4 AND 6 - SYSTEM 80 System Description	SLI	131	
UP-9607	MODEL 8 CONTROLLERS OF THE I/O PROCESSOR - SYSTEM 80 Hardware Programmer Reference	RD	148	
UP-9607-A	UPDATE PACKAGE A		58	‡
UP-9608	MODEL 8 PROCESSOR AND CENTRAL PERIPHERALS - SYSTEM 80 Operator Reference	SLI	188	
UP-9608-A	UPDATE PACKAGE A		51	‡
UP-9692	MODEL 8 PROCESSOR - SYSTEM 80 Hardware Programmer Reference	SLI	162	
UP-9692-A	UPDATE PACKAGE A		17	‡
UP-9693	MODELS 4 AND 6 I/O INTEGRATED CONTROLLERS Reference	SLI	325	‡
UP-9710	SYSTEM 80 MODEL 8 Operator's Maintenance Guide	SLI	81	‡
UP-9731 R1	FILE PLACEMENT ANALYZER (FIPLAN) User Guide	SLI	38	‡
UP-9732	MODEL 8 CONTROLLERS AND COMMUNICATIONS CHANNEL OF THE MICROPROCESSOR Hardware Programmer Reference	RD	466	
UP-9734 R1	MAPPER 80 RUN FUNCTIONS User Guide	SLI	140	‡
UP-9735 R1	MAPPER 80 MANUAL FUNCTIONS User Guide	SLI	196	‡
UP-9736 R1	MAPPER 80 FORMS GENERATION AND UTILITIES User Guide	SLI	168	‡
UP-9737 R2	MAPPER 80 OPERATOR AND COORDINATOR User Guide	SLI	107	‡

‡ Denotes items added or changed since the last issue of this summary.

DOC. NO.	TITLE AND DESCRIPTION	TYPE	NO. PAGES	STATUS
UP-9743	SERIES 90 TO MODEL 8 MIGRATION User Guide	SLI	72	
UP-9744	INTEGRATED COMMUNICATIONS ACCESS METHOD (ICAM) Concepts and Facilities	SLI	210	
UP-9745	INTEGRATED COMMUNICATIONS ACCESS METHOD (ICAM), NETWORK DEFINITION AND OPERATIONS User Guide	SLI	332	
UP-9745-A	UPDATE PACKAGE A		113	‡
UP-9746	INTEGRATED COMMUNICATIONS ACCESS METHOD (ICAM), COMMUNICATIONS PHYSICAL INTERFACE (CPI) User Guide	SLI	142	
UP-9748	INTEGRATED COMMUNICATIONS ACCESS METHOD (ICAM), UTILITIES User Guide	SLI	176	
UP-9748-A	UPDATE PACKAGE A		29	‡
UP-9749	INTEGRATED COMMUNICATIONS ACCESS METHOD (ICAM) Programmer Reference	SLI	467	
UP-9749-A	UPDATE PACKAGE A		66	‡
UP-9972	INTERACTIVE SERVICES COMMANDS AND FACILITIES User Guide/Programmer Reference	SLI	293	
UP-9973	INTERACTIVE SERVICES COMMANDS AND FACILITIES Summary	SLI	168	
UP-9974	COBOL EDITOR (COBEDT) User Guide/Programmer Reference	SLI	168	
UP-9975	SPOOLING AND JOB ACCOUNTING Concepts and Facilities	SLI	210	
UP-9976	GENERAL EDITOR (EDT) User Guide/Programmer Reference	SLI	273	
UP-9976-A	UPDATE PACKAGE A		135	‡
UP-9977	SCREEN FORMAT SERVICES Concepts and Facilities	SLI	226	
UP-9977-A	UPDATE PACKAGE A		23	‡
UP-9978	CONSOLIDATED DATA MANAGEMENT Concepts and Facilities	SLI	127	
UP-9979	CONSOLIDATED DATA MANAGEMENT MACROINSTRUCTIONS User Guide/Programmer Reference	SLI	184	

‡ Denotes items added or changed since the last issue of this summary.

	TITLE AND DESCRIPTION	DOC. NO.	TYPE	NO. PAGES	STATUS
UP-9980	DUMP ANALYSIS User Guide/Programmer Reference		SLI	91	
UP-9980-A	UPDATE PACKAGE A			22	‡
UP-9981	REPORT PROGRAM GENERATOR II (RPG II) EDITOR User Guide/Programmer Reference		SLI	96	
UP-9982	FILE CATALOGING Concepts and Facilities		SLI	86	
UP-9983	SYSTEM ACTIVITY MONITOR User Guide/Programmer Reference		SLI	79	
UP-9983-A	UPDATE PACKAGE A			8	‡
UP-9984	JOB CONTROL Programmer Reference		SLI	206	
UP-9984-A	UPDATE PACKAGE A			18	‡
UP-9985	SYSTEM OPERATIONS Summary		SLI	171	
UP-9985-A	UPDATE PACKAGE A			10	‡
UP-9986	JOB CONTROL User Guide		SLI	318	
UP-9986-A	UPDATE PACKAGE A			31	‡
UP-10000	MAPPER 80 SOFTWARE Introduction		SLI	26	
UP-10002	DISK DRIVE, 8470 General Description		SLI	23	
UP-10003	INSTALLATION VERIFICATION PROCEDURES User Guide/Programmer Reference		SLI	171	
UP-10004	DISK DRIVE, 8470 Operator Reference		SLI	25	
UP-10005	DISK DRIVES, 8416/8418 General Description		RD	22	
UP-10009	MAGNETIC TAPE DRIVES, UNISERVO 26 AND 28 Operator Reference		SLI	42	
UP-10010	MAGNETIC TAPE DRIVES, UNISERVO 26 AND 28 General Description		SLI	24	

‡ Denotes items added or changed since the last issue of this summary.

	TITLE AND DESCRIPTION	DOC. NO.	TYPE	NO. PAGES	STATUS
UP-10047	INTEGRATED COMMUNICATIONS ACCESS METHOD (ICAM) REMOTE TERMINAL PROCESSOR (RTP) User Guide		SLI	80	‡
UP-10830.1	SYSTEM RELEASE ANNOUNCEMENT (SRA), RELEASE 9.0		SLI	17	‡
UP-10830.2	SYSTEM RELEASE DESCRIPTION (SRD), RELEASE 9.0		SLI	165	‡
UP-10870	DATA BASE MANAGEMENT (DMS) SYSTEM SUPPORT FUNCTIONS User Guide/Programmer Reference		SLI	235	‡
UP-11456	FILE PLACEMENT ANALYZER (FIPLAN) Program Product Specification		SLI	2	‡

‡ Denotes items added or changed since the last issue of this summary.

4. System 80 Mailing List Configurator

RELATED DOCUMENTATION				
MAILING LIST NO.	TITLE AND DESCRIPTION	NUMBER	TYPE	PAGE COUNT
BA6 (Mod 3/4)	I/O Integ Controllers PR	UP-8742	RD	235
	System Description	UP-9577	SLI	118
	Processor OR	UP-8880	SLI	62
	Processor PR	UP-8881	RD	203
	I/O Microprocessor PR	UP-8909	RD	220
	Sys Rel Desc (SRD) 9.0	UP-10830.2	SLI	165
	1 standard loose-leaf binder	UP-8700	SLI	NA
BA7 (Mod 5/6)	Same as BA6			
BA8 (Mod 8)	Model 8 Cont of IOP HPR	UP-9607	RD	48
	Model 8 Cont & Comm Chan	UP-9732	RD	466
	Microprocessor HPR			
	Model 8 Processor OR	UP-9608	SLI	188
	Model 8 Processor PR	UP-9692	RD	162
	Model 8 Sys Desc	UP-9386	SLI	137
	Sys Rel Desc (SRD) 9.0	UP-10830.2	SLI	165
BB2 (8416/18 Disk)	8416/8418 Disk Drives OR	UP-8361	SLI	23
	8416/8418 Disk Drives GD	UP-10005	SLI	22
BB6 (8430/33 Disk)	8430/8433 Disk Drives GD	UP-10028	SLI	45
	8405/8430/8433 Disk Drives OR	UP-8343	SLI	28
BB7 (8417 Disk)	8417 Disk Gen Desc	UP-8916	SLI	23
	8417 Disk Oper Ref	UP-8917	SLI	18
BB8 (8419 Disk)	8419 Disk Gen Desc	UP-8918	SLI	24
	8419 Disk Oper Ref	UP-8919	SLI	26
BB9 (8470 Disk)	None Available at Present			
BD1 (8420 Diskette)	8420/8422 Diskette Gen Desc	UP-8699	SLI	29
	8420/8422 Diskette Media Ref	UP-9166	SLI	27
BD2 (8422 Diskette)	Same as BD1			
BE0 (3560 Loc Wkstn)	Workstation Oper Ref	UP-8910	SLI	83
	Workstation Gen Desc	UP-9134	SLI	57
	Workstation Subsys Ref	UP-9136	RD	203
	Workstation Media Ref	UP-9137	SLI	27

RELATED DOCUMENTATION

MAILING LIST NO.	TITLE AND DESCRIPTION	NUMBER	TYPE	PAGE COUNT
BE1 (3561 Loc Wkstn)	UTS 40 Single Station Sys Desc	UP-9141	RD	65
	UTS 40 Single Station Oper Guide	UP-9142	RD	179
	UTS 40 Single Station Sys Ref	UP-9143	RD	210
BE2 (3560 Rem Wkstn)	Workstation Gen Desc	UP-9134	SLI	57
	Workstation Oper Guide	UP-9135	SLI	99
	Workstation Subsys Ref	UP-9136	RD	203
	Workstation Media Ref	UP-9137	SLI	27
BE3 (3561 Rem Wkstn)	Same as BE1			
BF1 (0770 Printer)	0770 Printer Subsys SR	UP-8016	SLI	142
	0770 Printer Subsys OR	UP-7938	SLI	91
BF3 (0776 Printer)	0776 Printer Oper Ref	UP-8250	SLI	59
	0776 Printer Gen Desc	UP-8354	SLI	84
	0776 Printer Media & Exp Supp	UP-8445	SLI	19
BF5 (0789 Printer)	0789 Printer Gen Desc	UP-8897	SLI	54
	0789 Printer Media & Exp Supp	UP-8907	SLI	20
	0789 Printer Oper Ref	UP-8908	SLI	47
	0789 Printer Subsys Ref	UP-9167	RD	52
BF6 (0798 Printer)	0798 Printer Gen Desc	UP-8871	SLI	31
	0798 Printer Oper Guide	UP-8882	SLI	31
BF7 (0425 Printer)	0425 Printer Subsys GD	UP-9581	SLI	23
	0425 Printer Subsys SR	UP-9586	SLI	13
BG0 (0716 Crd Rdr)	0716 Card Reader Subsys OR	UP-7921	SLI	25
BG2 (0719 Cd Rdr)	0719 Card Reader Media & Exp Supp	UP-8390	SLI	12
	0719 Card Reader Oper Ref	UP-8617	SLI	24
	0719 Card Reader Gen Desc	UP-8619	SLI	12
BH2 (0608 Cd Punch)	0608 Card Punch Media & Exp Supp	UP-8388	SLI	12
	0608 Card Punch Gen Desc	UP-8894	SLI	24
	0608 Card Punch Oper Ref	UP-8896	SLI	32
BI1 (UNISERVO 10)	UNISERVO 10 Mag Tape Media Ref	UP-8208	SLI	34
	UNISERVO 10 Mag Tape Oper Ref	UP-8609	SLI	27
	UNISERVO 10 Mag Tape Subsys Ref	UP-8890	RD	49
	UNISERVO 10 Mag Tape Gen Desc	UP-8891	SLI	23
BI2 (U12/16)	UNISERVO 12/16 Mag Tape Subsys OR	UP-7882	SLI	52
	UNISERVO Mag Tape Subsys Media	UP-8208	SLI	34
BI3 (U20)	UNISERVO 20 Mag Tape Subsys OR	UP-7956	SLI	47
	UNISERVO Mag Tape Subsys Media	UP-8208	SLI	34
BI4 (3782 Str Tape)	3782 Streaming Tape Oper Ref	UP-9381	SLI	34
	3782 Streaming Tape Gen Desc	UP-9382	RD	19
BI5 (U22/24)	UNISERVO 22/24 Mag Tape Drives Ref	UP-8902	SLI	60
	UNISERVO 22/24 Mag Tape Drives OR	UP-8903	SLI	36
	UNISERVO 22/24 Mag Tape Drives GD	UP-8904	SLI	24
	UNISERVO Mag Tape Subsys Media	UP-8208	SLI	34

RELATED DOCUMENTATION

MAILING LIST NO.	TITLE AND DESCRIPTION	NUMBER	TYPE	PAGE COUNT
B16	UNISERVO 26/28 Oper Ref	UP-10009	SLI	40
	UNISERVO 26/28 Gen Desc	UP-10010	SLI	25
	UNISERVO 26/28 Ref	UP-10011	RD	150
BL1 (U100)	UNISCOPE 100/200, Oper Ref	UP-7788	SLI	26
	UNISCOPE 100/200, Prog Ref	UP-7807	RD	175
	UNISCOPE 100/200, Concepts & Appl's	UP-8155	SLI	54
BL2 (U200)	Same as BL1			
BL3 (UTS 400)	UTS 400 Sys Desc	UP-8357	SLI	73
	UTS 400 Oper Guide	UP-8358	SLI	268
	UTS 400 Prog Ref	UP-8359	RD	276
	UTS 400 to OS/3 Interface UG/PR	UP-8611	SLI	79
BL4 (UTS 4000)	UTS 4020 Gen Desc	UP-9149	SLI	74
	UTS 4020 System Ref	UP-9150	SLI	144
	UTS 4000 COBOL Prog Ref	UP-9377	RD	244
BN0 (0774 Prntr)	0774 Terminal Printer Comp Desc	UP-8339	SLI	49
	0774 Terminal Printer Oper Guide	UP-8470	SLI	57
	0774 Terminal Printer Gen Desc	UP-8471	SLI	33
BN1 (0786 Printer)	0786 Printer Gen Desc	UP-8495	SLI	23
	0786 Printer Oper Guide	UP-8496	SLI	30
BN2 (0791 Printer)	UTS 20 Installation/Verification Guide	UP-9140	RD	31
	UTS 40 Single Station Sys Description	UP-9141	RD	40
BN3 (0797 Printer)	0797 Printer Gen Desc	UP-9159	SLI	21
	0797 Printer Oper Guide	UP-9160	SLI	28
	0797 Printer Media & Exp Supp	UP-9162	SLI	21
BN6 (0866 Tape Cass)	0866 Tape Cassette Concepts & Appl's	UP-8282	SLI	36
BN7 (8406 Diskette)	8406 Diskette Gen Desc	UP-8475	SLI	22
	8406 Diskette Oper Guide	UP-8476	SLI	25
	8406 Diskette Media Ref	UP-8593	SLI	14
BP3 (UNIS 80E)	UNIS 80-E Data Base Gen Ref	UA-0354	SLI	420
	UNIS 80-E Use and Operation Guide	UA-0355	SLI	1293
	UNIS 80-E General Ref	UA-0356	SLI	241
	UNIS 80-E Prog Ref	UA-0357	SLI	171
	UNIS 80-E Data Dictionary Prog Ref	UA-0358	RD	60
	2 standard loose-leaf binders	UP-8700	SLI	NA
BP4 UNIS 80)	UNIS 80 Data Base Gen Ref	UA-0359	SLI	223
	UNIS 80 Use and Operation Guide	UA-0360	SLI	809
	1 standard loose-leaf binder	UP-8700	SLI	NA
BP5 (ACS 80 Acct's Pay)	ACS 80 Acct's Payable User Ref	UA-0323	SLI	278
BP6 (ACS 80 Acct's Rec)	ACS 80 Acct's Rec'able User Ref	UA-0325	SLI	312

RELATED DOCUMENTATION

MAILING LIST NO.	TITLE AND DESCRIPTION	NUMBER	TYPE	PAGE COUNT
BP7 (ACS 80 Gen Ledger)	ACS 80 Gen Ledger User Ref	UA-0327	SLI	287
BP8 (ACS 80 Payroll)	ACS 80 Payroll User Ref	UA-0329	SLI	227
BP9 (ICS/80)	ICS/80 User Reference	UA-0341	SLI	171
	ICS/80 Terminal Operator Guide	UA-0342	SLI	41
BQ1 (UNIDIS)	UNIDIS Data Base Gen Ref	UA-0365	SLI	127
	UNIDIS Use and Operation Guide	UA-0366	SLI	442
	UNIDIS Simulator Gen Ref	UA-0367	SLI	164
	1 standard loose-leaf binder	UP-8700	SLI	NA
BR0 (AMS 80 Payroll)	AMS 80 Multistate Payroll Cert User Ref	UA-0460	SLI	98
BR1 (AMS 80 Acc'ts Pay)	AMS 80 Accounts Payable User Guide	UA-0461	SLI	99
BR2 (AMS 80 Acc'ts Rec)	AMS 80 Accounts Receivable User Ref	UA-0462	SLI	121
BR3 (AMS 80 Gen Ledger)	AMS 80 Gen Ledger User Guide	UA-0463	SLI	149
BR4 (WAMS 80 Inv/Sales)	WAMS 80 Inventory/Sales Analysis User Ref	UA-0529	SLI	123
BR5 (WAMS 80 Order Entry)	WAMS 80 Order Entry User Ref	UA-0530	SLI	267
BR6 (WAMS 80 Credit Ref)	WAMS 80 Credit Returns User Ref	UA-0531	SLI	143
BR7 (WAMS 80 Exp Sales)	WAMS 80 Expanded Sales Analysis User Ref	UA-0532	SLI	93
BR8 (UNIFACS 80 Acc'ts Rec)	UNIFACS 80 Accounts Receivable User Ref	UA-0534	SLI	67
	UNIFACS 80 Accounts Receivable Prog Ref	UA-0535	SLI	564
BR9 (UNIFACS 80 Acc'ts Pay)	UNIFACS 80 Accounts Payable User Ref	UA-0536	SLI	230
	UNIFACS 80 Accounts Payable Prog Ref	UA-0537	SLI	422
BS0 (UNIFACS 80 Payroll)	UNIFACS 80 Payroll User Ref	UA-0538	SLI	261
	UNIFACS 80 Payroll Prog Ref	UA-0539	SLI	532
BS1 (UNIFACS 80 Gen Ledger)	UNIFACS 80 Gen Ledger User Ref	UA-0540	SLI	238
	UNIFACS 80 Gen Ledger Prog Ref	UA-0541	SLI	398
B00 (All System 80 Docs)	PPS - UTS 400 COBOL	U6698	SLI	2
	PPS - UTS 400 Edit Processor	U6699	SLI	2
	ACS 80 Acct's Payable User Ref	UA-0323	SLI	278
	ACS 80 Acct's Rec'able User Ref	UA-0325	SLI	312
	ACS 80 Gen Ledger User Ref	UA-0327	SLI	287

RELATED DOCUMENTATION

MAILING LIST NO.	TITLE AND DESCRIPTION	NUMBER	TYPE	PAGE COUNT
800 (All System 80 Docs) (cont)	ACS 80 Payroll User Ref	UA-0329	SLI	227
	PPS - ACS 80 (Acctg Control Sys Accounts Payable Sys)	UA-0332	SLI	4
	PPS - ACS 80 (Acctg Control Sys Accounts Receivable Sys)	UA-0333	SLI	4
	PPS - ACS 80 (Acctg Control Sys General Ledger Sys)	UA-0334	SLI	4
	PPS - ACS 80 (Acctg Control Sys Payroll System)	UA-0335	SLI	4
	PPS - ICS 80 (Info Collection Sys) ICS/80 User Reference	UA-0340	SLI	4
	ICS/80 Terminal Operator Guide	UA-0341	SLI	171
	UA-0342	SLI	41	
	PPS - Order Entry-E (Extended Interactive Order Entry System)	UA-0346	SLI	2
	PPS - Order Entry 80 (Interactive Order Entry System)	UA-0347	SLI	2
	PPS - UNIS 80-E (Extended Interactive Mfg Planning and Control Sys)	UA-0348	SLI	4
	PPS - UNIS 80 (Interactive Mfg Planning and Control Sys)	UA-0349	SLI	4
	PPS - UNIDIS-WHOLESALE (Order Entry and Stock Control Sys)	UA-0350	SLI	4
	PPS - UNIDIS-WHOLESALE (Inventory Mgmt Subsystem)	UA-0351	SLI	4
	UNIS 80-E Data Base Gen Ref	UA-0354	SLI	420
	UNIS 80-E Use and Operation Guide	UA-0355	SLI	1293
	UNIS 80-E General Ref	UA-0356	SLI	241
	UNIS 80-E Prog Ref	UA-0357	SLI	171
	UNIS 80-E Data Dictionary Prog Ref	UA-0358	RD	60
	UNIS 80 Data Base Gen Ref	UA-0359	SLI	223
	UNIS 80 Use and Operation Guide	UA-0360	SLI	809
	UNIDIS Data Base Gen Ref	UA-0365	SLI	127
	UNIDIS Use and Operation Guide	UA-0366	SLI	442
	UNIDIS Simulator Gen Ref	UA-0367	SLI	164
	AMS 80 Multistate Payroll/Cert User Ref	UA-0460	SLI	98
	AMS 80 Accounts Payable User Guide	UA-0461	SLI	99
	AMS 80 Accounts Payable User Ref	UA-0462	SLI	121
	AMS 80 Gen Ledger User Guide	UA-0463	SLI	149
	WAMS 80 Inventory/Sales Analysis User Ref	UA-0529	SLI	123
	WAMS 80 Order Entry User Ref	UA-0530	SLI	267
	WAMS 80 Credit Returns User Ref	UA-0531	SLI	143
	WAMS 80 Expanded Sales Analysis User Ref	UA-0532	SLI	93
	UNIFACS 80 Accounts Receivable User Ref	UA-0534	SLI	67
	UNIFACS 80 Accounts Receivable Prog Ref	UA-0535	SLI	564
	UNIFACS 80 Accounts Payable User Ref	UA-0536	SLI	230
UNIFACS 80 Accounts Payable Prog Ref	UA-0537	SLI	TBS	
UNIFACS 80 Payroll User Ref	UA-0538	SLI	261	
UNIFACS 80 Payroll Prog Ref	UA-0539	SLI	532	
UNIFACS 80 Gen Ledger User Ref	UA-0540	SLI	238	
UNIFACS 80 Gen Ledger Prog Ref	UA-0541	SLI	TBS	
Fundamentals of FORTRAN Prog Ref	UP-7536	SLI	182	
UNISCOPE Oper Ref	UP-7788	SLI	26	

RELATED DOCUMENTATION

MAILING LIST NO.	TITLE AND DESCRIPTION	NUMBER	TYPE	PAGE COUNT
BOO (All System 80 Docs) (cont)	UNISCOPE Prog Ref	UP-7807	RD	175
	DMS DDL UG/PR	UP-8022	SLI	112
	Intro to the Assembler	UP-8030	SLI	26
	DMS DML UG/PR	UP-8036	SLI	210
	RPG II PR	UP-8044	SLI	254
	Job Control UG	UP-8065	SLI	339
	RPG II UG	UP-8067	SLI	751
	Intro to Sort/Merge	UP-8073	SLI	20
	System Messages P/OR	UP-8076	SLI	710
	UNISCOPE 100/200 Concepts & Appl's	UP-8155	SLI	54
	ICAM C & F	UP-8194	SLI	233
	UNISERVO Mag Tape Media Ref	UP-8208	SLI	40
	Job Control PR	UP-8217	SLI	213
	0776 Printer Oper Ref	UP-8250	SLI	59
	RPG II Summary	UP-8253	SLI	1
	ICAM PR	UP-8269	SLI	502
	DMS SSF UG/PR	UP-8272	SLI	219
	0866 Tape Cassette Concepts & Appl's	UP-8282	SLI	36
	0774 Terminal Printer Comp Desc	UP-8339	SLI	49
	0776 Printer Gen Desc	UP-8354	SLI	84
	UTS 400 Sys Desc	UP-8357	SLI	73
	UTS 400 Oper Guide	UP-8358	SLI	268
	IMS SSF UG	UP-8364	SLI	303
	System Operations Summary	UP-8376	SLI	187
	System/3 to OS/3 Transition UG/PR	UP-8379	SLI	193
	0608 Card Punch Media & Exp Supp	UP-8388	SLI	12
	0719 Card Reader Media & Exp Supp	UP-8390	SLI	12
	Interfacing a Remote Device Handler PR	UP-8424	RD	133
	0776 Printer Ref	UP-8441	RD	124
0776 Printer Media & Exp Supp	UP-8445	SLI	19	
0774 Terminal Printer Oper Guide	UP-8470	SLI	57	
0774 Terminal Printer Gen Desc	UP-8471	SLI	33	
8406 Diskette Gen Desc	UP-8475	SLI	22	
8406 Diskette Oper Guide	UP-8476	SLI	25	
UTS 400 COBOL PR	UP-8481	SLI	196	
UTS 400 Utility Library PR	UP-8483	SLI	73	
0786 Printer Gen Desc	UP-8495	SLI	23	
0786 Printer Oper Guide	UP-8496	SLI	30	
OS/4 to OS/3 Comm Conv UG/PR	UP-8515	SLI	89	
OS/4 to OS/3 Assembly Prog Trans UG/PR	UP-8516	SLI	313	
ICAM DDI UG	UP-8549	RD	176	
ICAM STDMCP UG	UP-8550	RD	328	
ICAM Utilities UG	UP-8552	SLI	171	
OS/4 to OS/3 Conversion UG/PR	UP-8553	SLI	129	
OS/4 to OS/3 Job Control Conv Util UG/PR	UP-8589	SLI	107	
8406/8413 Diskette Media Ref	UP-8593	SLI	14	
Intro to OS/4 to OS/3 Conversion	UP-8596	SLI	29	

RELATED DOCUMENTATION

MAILING LIST NO.	TITLE AND DESCRIPTION	NUMBER	TYPE	PAGE COUNT
800 (All System 80 Docs) (cont)	UNISERVO 10 Mag Tape Oper Ref	UP-8609	SLI	27
	UTS 400/4000 - OS/3 Interface UG/PR	UP-8611	SLI	79
	74 ANS COBOL Summary	UP-8612	SLI	48
	74 ANS COBOL PR	UP-8613	SLI	413
	0719 Card Reader Oper Ref	UP-8617	SLI	24
	0719 Card Reader Gen Desc	UP-8619	SLI	12
	8420/8422 Diskette Gen Desc	UP-8699	SLI	29
	I/O Integ Controllers PR	UP-8742	RD	235
	IMS/DMS Interface UG	UP-8748	SLI	107
	System 80 System Description	UP-8800	SLI	121
	Intro to BASIC	UP-8801	SLI	20
	Screen Format Services C & F	UP-8802	SLI	191
	RPG II Editor UG/PR	UP-8803	SLI	96
	Intro to 74 ANS COBOL	UP-8804	SLI	27
	74 ANS COBOL Fundamentals	UP-8805	SLI	273
	Dialog Specifications Language UG/PR	UP-8806	SLI	234
	Intro to DMS	UP-8808	SLI	24
	Distributed Data Processing C & F	UP-8811	SLI	200
	System Activity Monitor UG/PR	UP-8812	SLI	79
	Intro to FORTRAN	UP-8813	SLI	17
	FORTRAN IV PR	UP-8814	SLI	230
	FORTRAN IV Summary	UP-8815	SLI	63
	Intro to IMS	UP-8816	SLI	23
Intro to RPG II	UP-8818	SLI	28	
Independent Sort/Merge UG/PR	UP-8819	SLI	133	
Installation Verification Procedures	UP-8820	SLI	222	
Intro to Job Control	UP-8821	SLI	28	
Security Maintenance Utility UG/PR	UP-8823	SLI	28	
Intro to Consolidated Data Mgmt	UP-8824	SLI	21	
Consolidated Data Mgmt C & F	UP-8825	SLI	122	
Consolidated Data Mgmt Macro UG/PR	UP-8826	SLI	185	
Intro to General Editor	UP-8827	SLI	21	
General Editor UG/PR	UP-8828	SLI	270	
Intro to Supervisor	UP-8830	SLI	18	
Supervisor C & F	UP-8831	SLI	72	
Supervisor Macroinstructions PR	UP-8832	SLI	255	
Intro to Data Utilities	UP-8833	SLI	16	
Data Utilities UG/PR	UP-8834	SLI	136	
SORT/3 UG/PR	UP-8836	SLI	87	
Dump Analysis UG/PR	UP-8837	SLI	91	
Intro to System Installation	UP-8838	SLI	19	
System Installation UG/PR	UP-8839	SLI	236	
Intro to System Service Programs	UP-8840	SLI	27	
System Service Programs UG	UP-8841	SLI	473	
System Service Programs PR	UP-8842	SLI	142	
Intro to Distributed Data Processing	UP-8843	SLI	25	
Intro to Interactive Processing	UP-8844	SLI	32	
Interactive Services Cmds & Fac UG/PR	UP-8845	SLI	254	
Intro to ICAM	UP-8846	SLI	51	
Intro to ESCORT Prog. Lang.	UP-8854	SLI	22	
ESCORT Prog. Lang. UG	UP-8855	SLI	427	
ESCORT Prog. Lang. Summary	UP-8856	SLI	21	
Intro to Dialog Processor	UP-8857	SLI	16	
Dialog Processor UG/PR	UP-8858	SLI	39	
Operations Handbook	UP-8859	SLI	233	
File Cataloging C & F	UP-8860	SLI	86	
Intro to System/3 Conversion	UP-8864	SLI	16	

RELATED DOCUMENTATION

MAILING LIST NO.	TITLE AND DESCRIPTION	NUMBER	TYPE	PAGE COUNT
B00 (All System 80 Docs) (cont)	Hardware/Software Summary	UP-8868	SLI	391
	Spooling and Job Accounting C & F	UP-8869	SLI	209
	System Concepts & Facilities	UP-8870	SLI	193
	0798 Printer Gen Desc	UP-8871	SLI	31
	Intro to System Maintenance Facilities	UP-8872	SLI	17
	Intro to Screen Format Services	UP-8873	SLI	23
	Index & Publications Guide	UP-8874	SLI	117
	Processor OR	UP-8880	SLI	62
	Processor PR	UP-8881	RD	203
	0798 Printer Oper Guide	UP-8882	SLI	31
	UNISERVO 10 Mag Tape Subsys Ref	UP-8890	RD	49
	UNISERVO 10 Mag Tape Gen Desc	UP-8891	SLI	23
	0608 Card Punch Gen Desc	UP-8894	SLI	24
	0608 Card Punch Oper Ref	UP-8896	SLI	32
	0789 Printer Gen Desc	UP-8897	SLI	54
	0789 Printer Media & Exp Supp	UP-8907	SLI	20
	0789 Printer Oper Ref	UP-8908	SLI	47
	I/O Microprocessor PR	UP-8909	RD	220
	Workstation Oper Ref	UP-8910	SLI	83
	Assembler UG	UP-8913	SLI	930
	Assembler PR	UP-8914	SLI	372
	Operator Maintenance Guide	UP-8915	SLI	83
	8417 Disk Gen Desc	UP-8916	SLI	23
	8417 Disk Oper Ref	UP-8917	SLI	18
	8419 Disk Gen Desc	UP-8918	SLI	24
	8419 Disk Oper Ref	UP-8919	SLI	26
	Interactive Services Summary	UP-8938	SLI	170
	ICAM CPI UG	UP-8945	RD	140
	ICAM MPPS UG	UP-8946	SLI	96
	ICAM Network Definition & Operations UG	UP-8947	SLI	342
	Intro to System/32, 34 Conversion	UP-8987	SLI	24
	ICAM Remote Term Proc UG	UP-8990	SLI	77
	System Index Tabs	UP-8997	SLI	86
	DMS Summary	UP-9009	SLI	51
OS/3 Documentation Release Status	UP-9068	SLI	41	
Sort/Merge Macroinstructions PR	UP-9072	SLI	142	
UTS 400 Edit Processor UG/PR	UP-9076	SLI	26	
COBOL Editor UG/PR	UP-9106	SLI	157	
Workstation Gen Desc	UP-9134	SLI	57	
Workstation Oper Guide	UP-9135	SLI	99	
Workstation Subsys Ref	UP-9136	RD	203	
Workstation Media Ref	UP-9137	SLI	27	
UTS 20 Install/Verif Guide	UP-9140	RD	102	
UTS 40 Single Station Sys Desc	UP-9141	RD	65	
UTS 40 Single Station Oper Guide	UP-9142	SLI	196	
UTS 40 Single Station Sys Ref	UP-9143	RD	210	
UTS 4020 Gen Desc	UP-9149	SLI	74	
UTS 4020 System Ref	UP-9150	SLI	144	
0797 Printer Gen Desc	UP-9159	SLI	21	
0797 Printer Oper Guide	UP-9160	SLI	28	
0797 Printer Media & Exp Supp	UP-9162	SLI	21	
Diskette Flexible Media Ref	UP-9166	SLI	27	
0789 Printer Subsys Ref	UP-9167	RD	52	
BASIC PR	UP-9168	SLI	202	
BASIC Summary	UP-9169	SLI	15	

RELATED DOCUMENTATION

MAILING LIST NO.	TITLE AND DESCRIPTION	NUMBER	TYPE	PAGE COUNT
BO1 (Sys Cont Software) (cont)	IMS Concepts & Facilities	UP-9205	SLI	213
	IMS Action Prog in RPG II UG	UP-9206	SLI	289
	IMS Action Prog in COBOL & BAL UG	UP-9207	SLI	562
	IMS Terminal Users Guide	UP-9208	SLI	151
	IMS Data Defin & UNIQUE UG	UP-9209	SLI	175
	PPS - IBM 3270 RTH	UP-9265.1	SLI	4
	PPS - System Control Software	UP-9265.3	SLI	6
	PPS - IMS Single-Thread	UP-9265.7	SLI	6
	PPS - DMS	UP-9265.9	SLI	6
	PPS - RPG II Group	UP-9265.10	SLI	2
	PPS - ANSI '74 COBOL	UP-9265.13	SLI	4
	PPS - FORTRAN IV	UP-9265.14	SLI	4
	PPS - BASIC	UP-9265.15	SLI	4
	PPS - ESCORT Prog. Lang.	UP-9265.16	SLI	4
	PPS - Editor	UP-9265.17	SLI	4
	PPS - Assembler	UP-9265.18	SLI	4
	PPS - Sort/Merge	UP-9265.19	SLI	2
	PPS - SORT3	UP-9265.20	SLI	2
	PPS - ICAM Term. Support Fac.	UP-9265.21	SLI	4
	PPS - Nine Thousand Remote (NTR)	UP-9265.22	SLI	2
	PPS - Online Diagnostics & Maint	UP-9265.28	SLI	4
	PPS - Menu Generator	UP-9265.29	SLI	2
	PPS - DDP Transfer Fac.	UP-9265.30	SLI	6
	PPS - DCA Termination Systems	UP-9265.31	SLI	2
	PPS - Extended System Software	UP-9265.33	SLI	8
	PPS - UTS 400 Load/Dump Term Fac	UP-9265.39	SLI	2
	PPS - Remote Term Processor (RTP)	UP-9265.40	SLI	4
	PPS - COBOL Editor	UP-9265.41	SLI	4
	PPS - Basic FORTRAN (DTF)	UP-9265.42	SLI	4
	PPS - IBM 3270 Emulator	UP-9265.43	SLI	4
	PPS - DDP File Access Facility	UP-9265.44	SLI	4
	PPS - IMS-DDP Transaction Facility	UP-9265.45	SLI	2
	PPS - MAPPER 80 System	UP-9265.50	SLI	4
	PPS - Resource Mgmt Facility	UP-9265.51	SLI	4
	PPS - IBERPAC PDN Support	UP-9265.52	SLI	4
	Sys Rel Desc (SRD) 8.1	UP-9280.51	SLI	225
	Sys Rel Announcement (SRA) 8.1	UP-9280.68	SLI	17
	Sys Rel Desc (SRD) 8.1.1	UP-9280.69	SLI	242
	Sys Rel Announcement 8.2	UP-9280.70	SLI	16
	Sys Rel Desc (SRD) 8.2	UP-9280.71	SLI	250
	Sys Rel Announcement (SRA) 8.1.1/8.2	UP-9280.80	SLI	12
	Sys Rel Announcement (SRA) MAPPER 80	UP-9280.85	SLI	13
MAPPER 80 Version 3.0 Sys Enhance.	UP-9280.86	SLI	19	
Intro to Menu Services	UP-9316	SLI	37	
Menu Services C & F	UP-9317	SLI	134	
System/32, 34 to OS/3 Conv UG	UP-9318	SLI	102	
3782 Streaming Tape Oper Ref	UP-9381	SLI	34	
3782 Streaming Tape Gen Desc	UP-9382	SLI	30	
Mktg Central SW Support Procedures	UP-9537	SLI	24	
RPG II Editor UG/PR	UP-9981	SLI	97	
ICAM Remote Term Proc (RBT) UG	UP-10047	SLI	80	
Sys Rel Desc (SRD) 9.0	UP-10830.2	SLI	165	
DMS Support Func UG/PR	UP-10870	SLI	235	
File Placement Analyzer PPS	UP-11456	SLI	2	
3 - 5" x 9" x 1" loose-leaf binders	UP-8430	SLI	NA	
2 - 5" x 9" x 2" loose-leaf binders	UP-8573	SLI	NA	
1 - 5" x 9" loose-leaf binder easel	UP-8573.1	SLI	NA	
17 - Standard (10 3/8" x 11 5/8" x 3 1/2") loose-leaf binders	UP-8700	SLI	NA	

RELATED DOCUMENTATION

MAILING LIST NO.	TITLE AND DESCRIPTION	NUMBER	TYPE	PAGE COUNT
B01 (Sys Cont Software)	PPS - UTS 400 COBOL	U6698	SLI	2
	PPS - UTS 400 Edit Processor	U6699	SLI	2
	PPS - IBM 3270 RTH	UP-9265.1	SLI	4
	PPS - System Control Software	UP-9265.3	SLI	6
	PPS - IMS Single-Thread	UP-9265.7	SLI	6
	PPS - DMS	UP-9265.9	SLI	6
	PPS - RPG II Group	UP-9265.10	SLI	2
	PPS - ANSI '74 COBOL	UP-9265.13	SLI	4
	PPS - FORTRAN IV	UP-9265.14	SLI	4
	PPS - BASIC	UP-9265.15	SLI	4
	PPS - ESCORT Prog. Lang.	UP-9265.16	SLI	4
	PPS - Editor	UP-9265.17	SLI	4
	PPS - Assembler	UP-9265.18	SLI	4
	PPS - Sort/Merge	UP-9265.19	SLI	2
	PPS - SORT3	UP-9265.20	SLI	2
	PPS - ICAM Term. Support Fac.	UP-9265.21	SLI	4
	PPS - Nine Thousand Remote (NTR)	UP-9265.22	SLI	2
	PPS - Online Diagnostics & Maint	UP-9265.28	SLI	4
	PPS - Menu Generator	UP-9265.29	SLI	2
	PPS - DDP Transfer Fac.	UP-9265.30	SLI	6
	PPS - DCA Termination System	UP-9265.31	SLI	2
	PPS - Extended System Software	UP-9265.33	SLI	6
	PPS - UTS 400 Load/Dump Term Fac	UP-9265.39	SLI	2
	PPS - Remote Term Processor (RTP)	UP-9265.40	SLI	4
	PPS - COBOL Editor	UP-9265.41	SLI	4
	PPS - Basic FORTRAN (DTF)	UP-9265.42	SLI	4
	PPS - IBM 3270 Emulator	UP-9265.43	SLI	4
	PPS - DDP File Access Fac	UP-9265.44	SLI	4
	PPS - IMS-DDP Processing Fac	UP-9265.45	SLI	2
	PPS - MAPPER 80 System	UP-9265.50	SLI	4
	PPS - Resource Mgmt Facility	UP-9265.51	SLI	4
	PPS - IBERPAC PDN Support	UP-9265.52	SLI	4
	PPS - ACS 80 (Acctg Control Sys Accounts Payable Sys)	UA-0332	SLI	4
	PPS - ACS 80 (Acctg Control Sys Accounts Receivable Sys)	UA-0333	SLI	4
	PPS - ACS 80 (Acctg Control Sys General Ledger Sys)	UA-0334	SLI	4
	PPS - ACS 80 (Acctg Control Sys Payroll System)	UA-0335	SLI	4
	PPS - ICS 80 (Info Collection Sys)	UA-0340	SLI	4
	PPS - Order Entry-E (Extended Interactive Order Entry System)	UA-0346	SLI	2
	PPS - Order Entry 80 (Interactive Order Entry System)	UA-0347	SLI	2
	PPS - UNIS 80-E (Extended Interactive Mfg Planning and Control Sys)	UA-0348	SLI	4
	PPS - UNIS 80 (Interactive Mfg Planning and Control Sys)	UA-0349	SLI	4
	PPS - UNIDIS-WHOLESALE (Order Entry and Stock Control Sys)	UA-0350	SLI	4
	PPS - UNIDIS-WHOLESALE (Inventory Mgmt Subsystem)	UA-0351	SLI	4

RELATED DOCUMENTATION

MAILING LIST NO.	TITLE AND DESCRIPTION	NUMBER	TYPE	PAGE COUNT	
B01 (Sys Cont Software) (cont)	Intro to Assembler	UP-8030	SLI	26	
	Intro to Sort/Merge	UP-8073	SLI	20	
	Intro to BASIC	UP-8801	SLI	20	
	Intro to ANSI '74 COBOL	UP-8804	SLI	27	
	Intro to DMS	UP-8808	SLI	24	
	Intro to FORTRAN	UP-8813	SLI	17	
	Intro to IMS	UP-8816	SLI	23	
	Intro to RPG II	UP-8818	SLI	28	
	Intro to Job Control	UP-8821	SLI	28	
	Intro to Consolidated Data Mgmt	UP-8824	SLI	21	
	Intro to General Editor	UP-8827	SLI	21	
	Intro to Supervisor	UP-8830	SLI	18	
	Intro to Data Utilities	UP-8833	SLI	16	
	Intro to Sys Installation	UP-8838	SLI	19	
	Intro to System Service Programs	UP-8840	SLI	27	
	Intro to Distributed Data Processing	UP-8843	SLI	25	
	Intro to Interactive Processing	UP-8844	SLI	32	
	Intro to ICAM	UP-8846	SLI	51	
	Intro to ESCORT Prog. Lang.	UP-8854	SLI	22	
	Intro to Dialog Processor	UP-8857	SLI	16	
	Intro to Sys Maint Fac	UP-8872	SLI	17	
	Intro to Screen Format Services	UP-8873	SLI	23	
	Intro to Menu Services	UP-9316	SLI	37	
		Job Control User Guide	UP-8065	SLI	339
		System Messages	UP-8076	SLI	710
		ICAM Concepts & Facilities	UP-8194	SLI	233
		Job Control Prog Ref	UP-8217	SLI	213
		System Operations Summary	UP-8376	SLI	187
		Screen Formatting C & F	UP-8802	SLI	191
		Sys Activity Monitor UG/PR	UP-8812	SLI	79
		Install Verification Procedures UG/PR	UP-8820	SLI	222
		Security Maintenance Utility UG/PR	UP-8823	SLI	28
		Consolidated Data Mgmt C & F	UP-8825	SLI	122
		Supervisor Concepts & Facilities	UP-8831	SLI	72
		Dump Analysis UG/PR	UP-8837	SLI	91
		System Installation UG/PR	UP-8839	SLI	236
		Sys Service Programs User Guide	UP-8841	SLI	473
		Sys Service Programs Prog Ref	UP-8842	SLI	142
		Interactive Services Cmds & Fac UG/PR	UP-8845	SLI	254
		Dialog Processor UG/PR	UP-8858	SLI	39
		Operations Handbook Oper Ref	UP-8859	SLI	233
		File Cataloging C & F	UP-8860	SLI	86
		Hardware/Software Summary	UP-8868	SLI	391
		System Concepts & Facilities	UP-8870	SLI	193
		Index & Publications Guide	UP-8874	SLI	117
	Workstation Oper Ref	UP-8910	SLI	83	
	Operator Maintenance Guide	UP-8915	SLI	83	
	Interactive Services Summary	UP-8938	SLI	170	
	ICAM Net Def & Operations UG	UP-8947	SLI	342	
	System Index Tabs	UP-8997	SLI	86	
	Documentation Release Status	UP-9068	SLI	41	
	Sys Rel Desc (SRD) 8.1	UP-9280.51	SLI	225	
	Sys Rel Announcement (SRA) 8.1	UP-9280.68	SLI	17	
	Sys Rel Desc (SRD) 8.1.1	UP-9280.69	SLI	242	
	Sys Rel Announcement 8.2	UP-9280.70	SLI	16	
	Sys Rel Desc (SRD) 8.2	UP-9280.71	SLI	250	
	Sys Rel Announcement (SRA) 8.1.1/8.2	UP-9280.80	SLI	12	
	Sys Rel Announcement (SRA) MAPPER 80	UP-9280.85	SLI	13	
	MAPPER 80 Version 3.0 Sys Enhance.	UP-9280.86	SLI	19	

RELATED DOCUMENTATION

MAILING LIST NO.	TITLE AND DESCRIPTION	NUMBER	TYPE	PAGE COUNT
B02 (Ext Sys Software)	Mktg Central SW Support Procedures	UP-9537	SLI	24
	File Placement Analyzer (FIPLAN)	UP-9731	SLI	38
	RPG II Editor UG/PR	UP-9981	SLI	97
	Sys Rel Desc (SRD) 9.0	UP-10830.2	SLI	165
	DMS Supp Func UG/PR	UP-10870	SLI	235
	2 - 5" x 9" x 1" loose-leaf binders	UP-8430	SLI	NA
	2 - 5" x 9" x 2" loose-leaf binders	UP-8573	SLI	NA
	1 - 5" x 9" loose-leaf binder easel	UP-8573.1	SLI	NA
	3 - Standard (10 3/8" x 11 5/8" x 3 1/2") loose-leaf binders	UP-8700	SLI	NA
	Dialog Spec Lang UG/PR	UP-8806	SLI	234
	Independent Sort/Merge UG/PR	UP-8819	SLI	133
	Data Utilities UG/PR	UP-8834	SLI	136
	SORT3 UG/PR	UP-8836	SLI	878
	Spooling & Job Acctg C & F	UP-8869	SLI	209
1 standard loose-leaf binder	UP-8700	SLI	NA	
B03 (Sort/Merge)	Independent Sort/Merge UG/PR	UP-8819	SLI	133
B04 (Sort3)	SORT3 UG/PR	UP-8836	SLI	87
B07 (IMS-ST)	IMS SSF UG	UP-8364	SLI	303
	IMS/DMS Interface UG	UP-8748	SLI	107
	IMS Concepts & Facilities	UP-9205	SLI	213
	IMS Action Prog in RPG II	UP-9206	SLI	289
	IMS Action Prog in COBOL & BAL UG	UP-9207	SLI	562
	IMS Terminal Users Guide	UP-9208	SLI	151
	IMS Data Defin & UNIQUE UG	UP-9209	SLI	175
	2 standard loose-leaf binders	UP-8700	SLI	NA
B08 (IMS-MT)	Same as B07			
B09 (DMS)	DMS DDL UG/PR	UP-8022	SLI	112
	DMS DML UG/PR	UP-8036	SLI	210
	DMS SSF UG/PR	UP-8272	SLI	219
	IMS/DMS Interface UG	UP-8748	SLI	107
	DMS Summary	UP-9009	SLI	51
B10 (RPG II)	RPG II PR	UP-8044	SLI	254
	RPG II UG	UP-8067	SLI	751
	RPG II Summary	UP-8253	SLI	1
	RPG II Editor UG/PR	UP-8803	SLI	96
	RPG II Editor UG/PR	UP-9981	SLI	97
	1 standard loose-leaf binder	UP-8700	SLI	NA
B13 ('74 COBOL)	1974 ANS COBOL Fundamentals	UP-8805	SLI	273
	1974 ANS COBOL Summary	UP-8612	SLI	48
	1974 ANS COBOL PR	UP-8613	SLI	413
	1 standard loose-leaf binder	UP-8700	SLI	NA
B14 (Streaming Tape)	3782 Tape Drive Oper Ref	UP-9381	SLI	34
	3782 Tape Drive Gen Desc	UP-9382	SLI	17
B15 (FORTRAN IV)	Fundamentals of FORTRAN	UP-7536	SLI	182
	FORTRAN IV PR	UP-8814	SLI	230
	FORTRAN IV Summary	UP-8815	SLI	63

RELATED DOCUMENTATION

MAILING LIST NO.	TITLE AND DESCRIPTION	NUMBER	TYPE	PAGE COUNT
B16 (BASIC)	BASIC PR	UP-9168	SLI	202
	BASIC Summary	UP-9169	SLI	15
B17 (ESCORT)	ESCORT Prog. Lang. UG	UP-8855	SLI	427
	ESCORT Prog. Lang. Summary	UP-8856	SLI	21
B18 (Assembler)	Consolidated Data Mgmt Macro UG/PR	UP-8826	SLI	185
	Supervisor Macro PR	UP-8832	SLI	255
	Assembler UG	UP-8913	SLI	930
	Assembler PR	UP-8914	SLI	372
	Sort/Merge Macro UG/PR	UP-9072	SLI	142
	2 standard loose-leaf binders	UP-8700	SLI	NA
B19 (Gen Editor)	General Editor UG/PR	UP-8828	SLI	270
B20 (ICAM-TSF)	ICAM PR	UP-8269	SLI	502
	Interfacing an RDH PR	UP-8424	RD	133
	ICAM DDI UG	UP-8549	RD	176
	ICAM STDMCP UG	UP-8550	RD	328
	ICAM Utilities UG	UP-8552	SLI	171
	ICAM CPI UG	UP-8945	RD	140
	ICAM MPPS UG	UP-8946	SLI	96
	1 standard loose-leaf binder	UP-8700	SLI	NA
B21 (NTR)	ICAM Utilities UG	UP-8552	SLI	171
B22 (DDP File/ Job Xfer)	DDP Concepts & Facilities	UP-8811	SLI	201
B27 (UTS 400 COBOL)	UTS 400 COBOL PR	UP-8481	SLI	196
B28 (UTS 400 Edit Proc)	UTS 400 Edit Processor UG/PR	UP-9076	SLI	26
B29 (UTS Ld/Dmp Util)	UTS 400 Utility Library PR	UP-8483	SLI	73
	UTS 400/4000 - OS/3 Interface UG/PR	UP-8611	SLI	79
B30 (Menu Gen)	Menu Services C & F	UP-9317	SLI	135
B31 (COBOL Editor)	COBOL Editor UG/PR	UP-9106	SLI	157
B32 (3270 Emul/RTH)	ICAM STDMCP UG	UP-8550	RD	328
B33 (RTP System)	ICAM Remote Term Proc UG	UP-8990	SLI	77
	ICAM Remote Term Proc (RBT) UG	UP-10047	SLI	80
B34 (DDP File Access)	DDP Concepts & Facilities	UP-8811	SLI	201
B35 (IMS-DDP)	Same as B34			

RELATED DOCUMENTATION

MAILING LIST NO.	TITLE AND DESCRIPTION	NUMBER	TYPE	PAGE COUNT
B36 (MAPPER 80)	MAPPER 80 PPS	UP-9265.50	SLI	6
	MAPPER 80 SRA	UP-9280.85	SLI	13
	MAPPER 80 Sys Enhancement	UP-9280.86	SLI	19
	MAPPER 80 Run Functions UG	UP-9734	SLI	140
	MAPPER 80 Manual Functions UG	UP-9735	SLI	196
	MAPPER 80 Forms Gen & Util UG	UP-9736	SLI	168
	MAPPER 80 OR & Coord UG	UP-9737	SLI	107
	MAPPER 80 Intro	UP-10000	SLI	25
B37	File Placement Analyzer UG	UP-9731	SLI	38
	File Placement Analyzer PPS	UP-11456	SLI	2
B50 (S/3 Conv)	System/3 to OS/3 Transition UG/PR	UP-8379	SLI	177
	Intro to OS/3 Conversion	UP-8864	SLI	16
B51 (S/32, 34 Conv)	Intro to System/32, 34 Conversion	UP-8987	SLI	24
	System/32, 34 to OS/3 Conv UG	UP-9318	SLI	102
B52 (360/ 20 Conv)	None Available at Present			
B53 (OS/4 Conv)	OS/4 to OS/3 Comm Conv UG/PR	UP-8515	SLI	89
	OS/4 to OS/3 Asmblr Pgm Trans UG/PR	UP-8516	SLI	313
	OS/4 to OS/3 Conversion Guide UG/PR	UP-8553	SLI	129
	OS/4 to OS/3 Job Cont Conv Util UG/PR	UP-8589	SLI	107
	Intro to OS/4 to OS/3 Conversion	UP-8596	SLI	29
B54 (9200/ 9300 Conv)	None Available at Present			



USER COMMENTS

We will use your comments to improve subsequent editions.

NOTE: Please do not use this form as an order blank.

(Document Title)

(Document No.)

(Revision No.)

(Update Level)

Comments:

From:

(Name of User)

(Business Address)

Fold on dotted lines, and mail. (No postage is necessary if mailed in the U.S.A.)
Thank you for your cooperation



FOLD



NO POSTAGE
NECESSARY
IF MAILED
IN THE
UNITED STATES

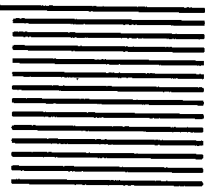
BUSINESS REPLY MAIL

FIRST CLASS PERMIT NO. 21 BLUE BELL, PA.

POSTAGE WILL BE PAID BY ADDRESSEE

SPERRY CORPORATION

**ATTN: Documentation Quality Control Group
C/O SYSTEM PUBLICATIONS**



P.O. BOX 500
BLUE BELL, PENNSYLVANIA 19422-9990



FOLD

