

OmniTerm/750t

User's Manual

Document #400-9001-01
Rev. E
June 2002
© 2002 NLynx Technologies All rights reserved.



OmniTerm/750t Warranty

This document is for use with OmniTerm/750t version 4.0 or higher.

All software, firmware and downloadable operating code described herein or used by the products described herein are copyrighted by and shall remain the property of Decision Data.

All drawings, schematics and artwork used in the manufacture of products described herein are copyrighted. Reproduction of said drawings; schematics and artwork or manufacture of said products without written consent of NLynx Technologies is absolutely prohibited.

Printed in the USA

OmniTerm/750t Limited Warranty

Software Warranty:

NLynx Technologies warrants that for a period of ninety (90) days from the date of purchase by the End User, its Software Products shall conform to its published specifications under normal usage. NLYNX TECHNOLOGIES DOES NOT WARRANT THAT THE OPERATION OF THE SOFTWARE WILL BE UNINTERRUPTED OR ERROR-FREE, OR THAT ALL SOFTWARE DEFECTS WILL BE CORRECTED. In the event a Software Product fails to comply with the warranty set forth above, NLynx Technologies will replace the product. End User must, however, return all copies of the Software, along with proof of purchase, to NLynx Technologies within 90 days from the Software purchase date.

Hardware Warranty:

NLynx Technologies warrants that for the OmniTerm/750t Hardware Product shall be free from defects in materials and workmanship, which arise under proper and normal use and service. In the event the OmniTerm/750t Hardware Product fails to comply with the warranty set forth above, NLynx Technologies will replace or repair the Product. End User must, however, return the Hardware Product, along with proof of purchase, to Decision Data.

Warranty Limitations:

End User's sole remedy under any Warranty provided by NLynx Technologies shall be limited to the replacement or repair of the Product, or at Decision Data's sole discretion, a refund of the purchase price. NLYNX TECHNOLOGIES GRANTS NO WARRANTY, EXPRESS OR IMPLIED OTHER THAN THE WARRANTIES STATED ABOVE. EXPRESSLY EXCLUDED ARE THE IMPLIED WARRANTIES OF MERCHANTABILITY AND FITNESS FOR A PARTICULAR PURPOSE. IN NO EVENT SHALL NLYNX TECHNOLOGIES BE LIABLE FOR SPECIAL, INCIDENTAL, OR CONSEQUENTIAL DAMAGES, INSTALLATION COSTS, LOST REVENUE OR PROFITS, OR ANY OTHER COSTS INCURRED AS A RESULT OF THE USE OF ANY NLYNX TECHNOLOGIES PRODUCT, WHETHER OR NOT USED IN ACCORDANCE WITH INSTRUCTIONS.

Table of Contents

Introduction	
OmniTerm/750t Limited Warranty	i
OmniTerm/750t Features	6
Equipment Listing	7
Configuration	9
Network Setup	11
Network Setup:	11
Remote Setup	14
Remote Configuration (OmniTerm/750t Main Menu):	14
Setup Sessions	15
OmniTerm/750t Setup (Main Menu):	15
Configuring TN5250/5250E Display Sessions:	17
Configuring a TN5250E Printer Session:	22
Configuring VT100/VT220 Sessions:	26
Configuring TN3270/TN3270E Display Sessions:	30
Configuring TN3270E Printer Sessions:	34
Language and Font Selection	36
Language Selection (OmniTerm/750t Main Menu) :	36
Font Types:	36
Keyboard Selection and VT220 Keymapping	38

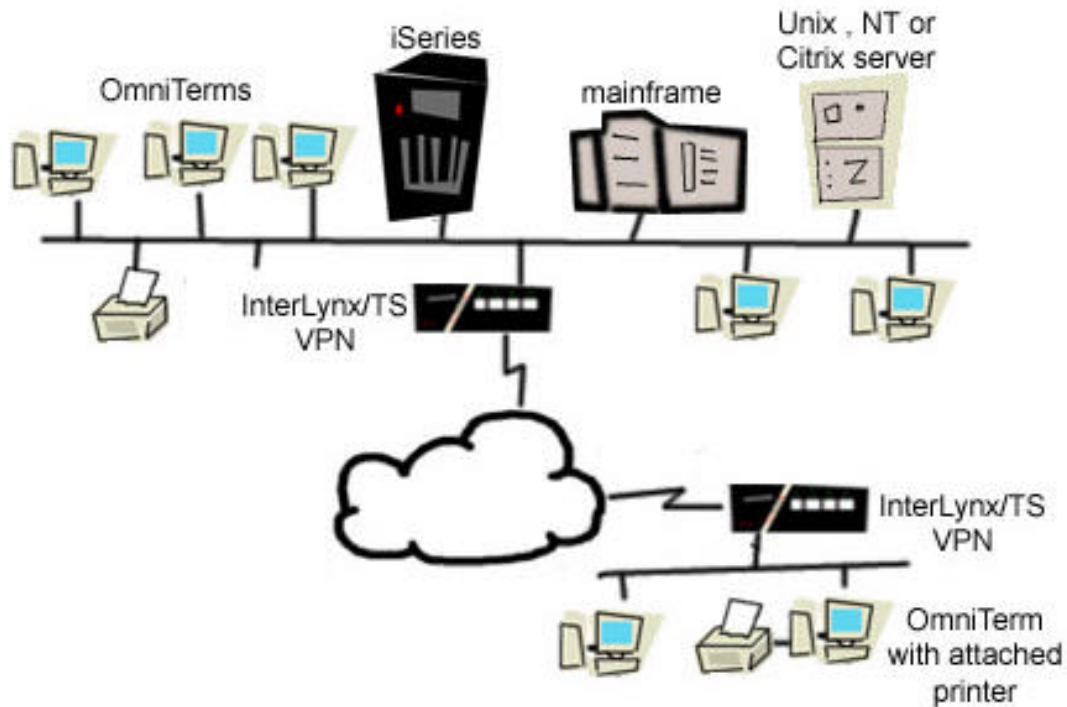
Keyboard Selection (OmniTerm/750t Main Menu):	38
Keymapping	40
Monitor Selection	43
Monitor Setup (OmniTerm/750t Main Menu):	43
Printer Selection	44
Printer Selection (OmniTerm/750t Main Menu):	44
Printing	45
Assigning Passthru Codes	46
Assign Printer Passthru Codes (OmniTerm/750t Main Menu):	46
Email	47
Email Setup (OmniTerm/750t Main Menu):	47
Locking Setup with Password	49
Lock Setup (OmniTerm/750t Main Menu):	49
Upgrades and Patches	50
Upgrade (OmniTerm/750t Main Menu):	50
Reset Configuration	51
Erase Setup (OmniTerm/750t Main Menu):	51
Exit the Setup (OmniTerm/750t Main Menu):	51
Keyboard Navigation	52
Identifying your keyboard	52
OmniTerm/750t 122-key Universal Keyboard	52
NLynx / DD U.S. 122-key 5250 Keyboard	53
NLynx / DD U.S. 122-key 3270 keyboard	54
US Standard 102-key "PC" Keyboard	55
Using Special Keys	56

Using Print Keys	57
Record/Playback	58
To Record keystrokes:	58
ASCII/EBCDIC Translation Table	61
SCS (SNA LU1) EBCDIC to ASCII (Printable Character)	61
SCS (SNA LU1) EBCDIC to ASCII (Hex Character)	62
Email Usage	63
Composing and sending a Test Message to Yourself	68
Hints for Composing a Message	69
Sending a Message	69
About Your Message Index Screen	72
Viewing a Message	73
Replying to a Message	73
Forwarding a Message	73
Deleting a Message	73
Expunging a Message	74
Adding Single Addresses Manually	76
Taking Multiple Addresses to Build a Distribution List	76
Changing a Single Address or a Distribution List	77
Using Address Book Entries When Composing Email	77
Printing Messages	77
Logging Out	78
Using TFTP from the AS/400	79
A. Using ES/TCP	79
B. Using CA/400	79

C. Working with the AS/400 TFTP Server	79
D. Download “omnidist” to your PC	79
F. Downloading the Upgrade to the Omniterm/e	80
Troubleshooting	81
The System Information Screen	81
The System Log Screen	81
The System Command Line Screen	81
Sales & Technical Support	83
Sales Offices	83

Introduction

OmniTerm/750t Features



- Industry-standard 10/100 MB Ethernet connection.
- Eliminates proprietary wiring infrastructure.
- Easy plug and play! No boot server required.
- Connect to any host.
- TN5250/TN3270E/VT220 included.
- Email client included.
- Upgradable and Updateable. Local or server-based configuration. Upgrades and updates available from the Internet, your Intranet or your AS/400.
- Platform that is ready for today and tomorrow.
- STPC multimedia processor included.
- Parallel port for host and screen printing to a PC-type printer
- SVGA support included.
- Serial port included (ready for future applications)

Chapter 1

Equipment Listing

This manual is available on our website at www.nlynx.com. Please refer to this manual for safety and complete installation instructions.

You should find the following equipment in your OmniTerm/750t package:



OmniTerm/750t terminal with stand



Power Cord



Quick Install Guide



*Keyboard * Adapter Cable
(For the NLYNX / DD
5250 or 3270 Keyboard)*

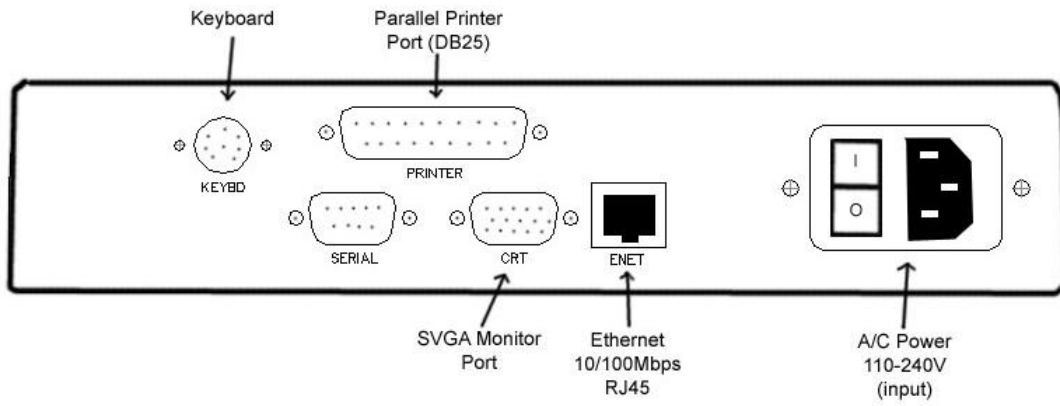


Figure 1 OmniTerm Back Panel

Chapter 2

Configuration

Note: This manual is not intended to be read sequentially to setup the OmniTerm/750t unit. For the initial configuration and most modifications, the OmniTerm/750t Installation Guide should be sufficient. This manual is a reference for detailed information on specific topics.

Using the OmniTerm/750t Setup Menus – The configuration of the OmniTerm/750t is done through a series of configuration menus. Options are selected by either entering the first letter of a menu item, or by using the arrow keys to highlight a selection. For example, to select the “Printer” option from a menu, type the letter “P” for Printer or use the arrow keys to highlight the “Printer” option on the menu. Once you have selected a menu item, press the “Field Exit” key (the “Enter” key on a PC keyboard) to proceed.

Some configuration menu screens have a “Done” option. To exit these screens, select “Done” and press the “Field Exit” key (“Enter” key if you are using a PC keyboard).

1. Power up your Monitor and turn on the OmniTerm/750t Logic Unit.

For a new configuration, the following pop-up window appears:

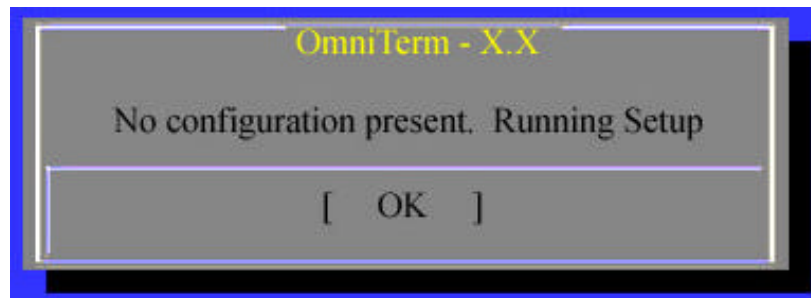


Figure 2: New Configuration screen

2. Press the Field Exit key to get the main OmniTerm/750t configuration screen.

When you modify a configuration, the following pop-up window appears:

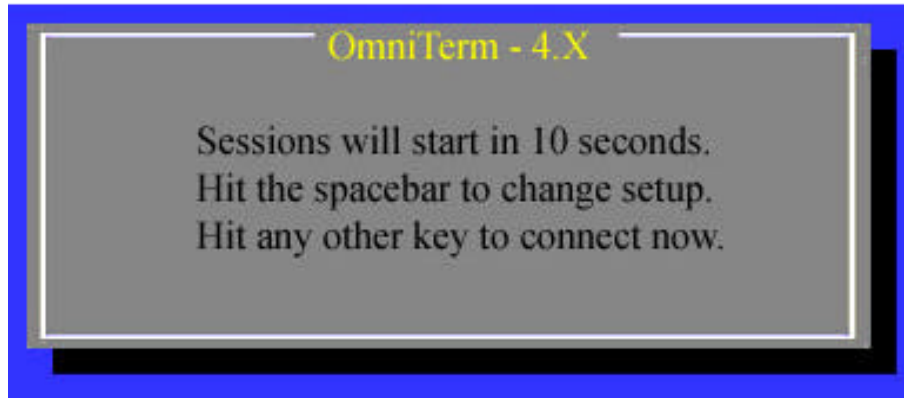


Figure 3: Modify Configuration screen

3. Press the Spacebar. This will bring you to the Main OmniTerm/750t Configuration screen.

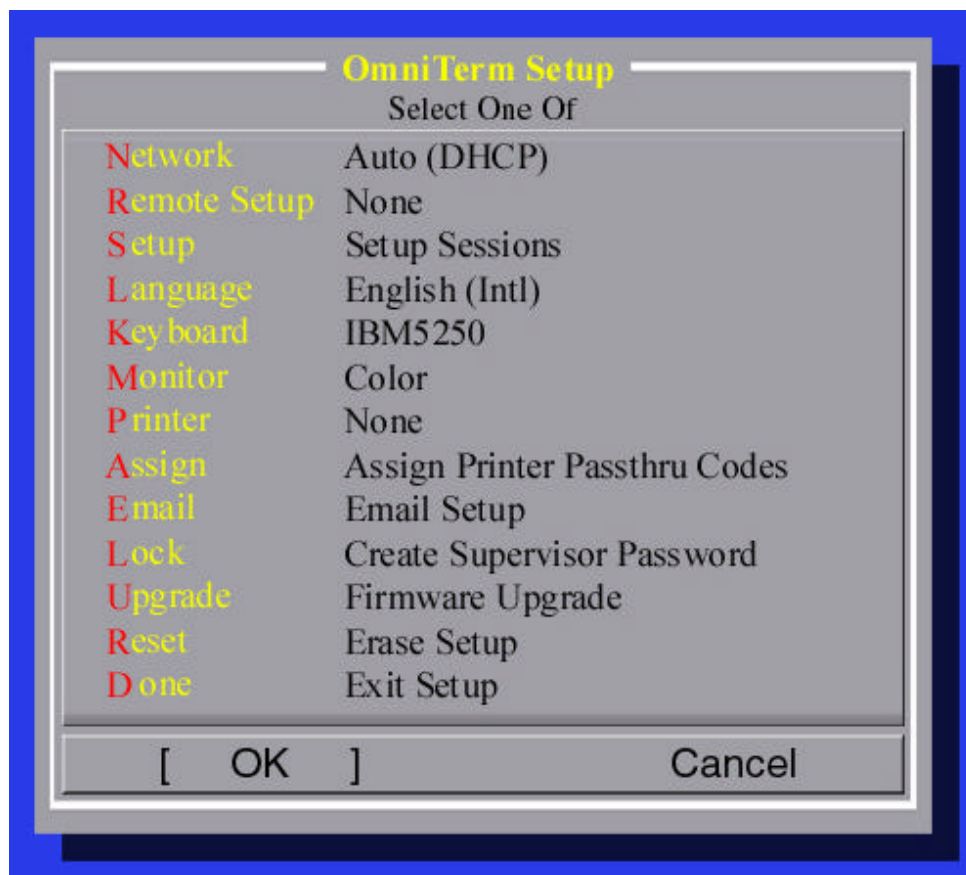


Figure 4: OmniTerm/750t Setup screen

Chapter 3

Network Setup

Network Setup:

Note: If you are using DHCP to automatically configure this unit's IP address information, then leave this setting at the default setting of "Auto(DHCP)".

From the OmniTerm/750t Setup screen:

1. Select "Network".
2. The *OmniTerm/750t Network Setup* window pops up.

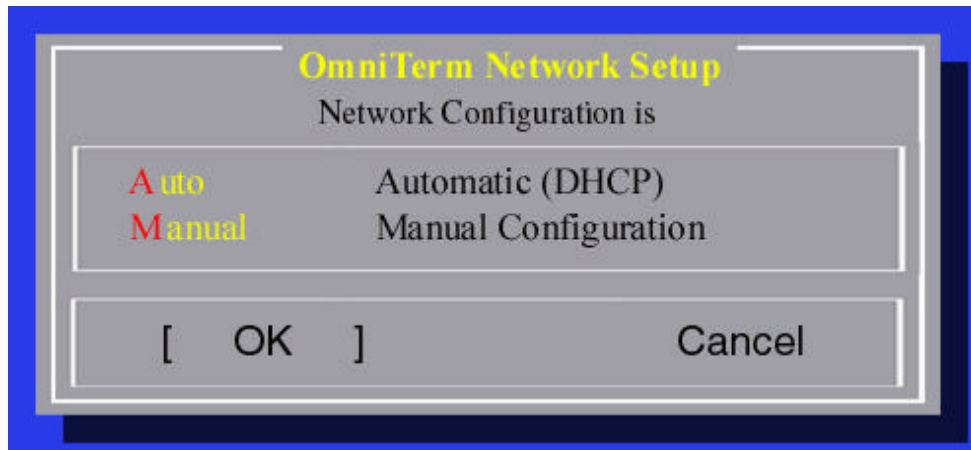


Figure 5: Network Setup screen

To manually configure the OmniTerm/750t IP settings:

3. Select "Manual".

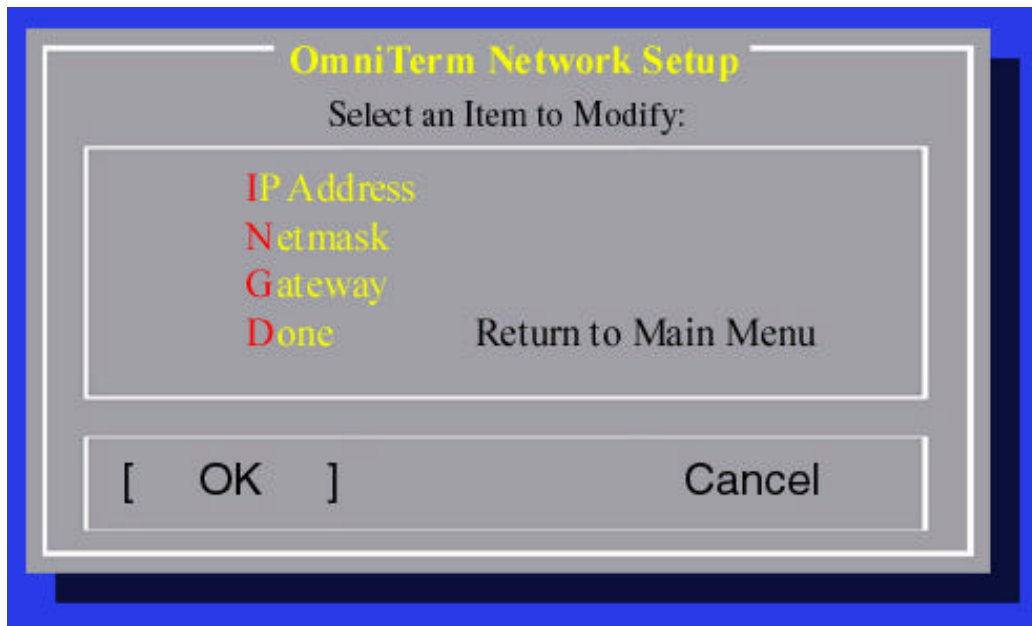


Figure 6: Network Setup screen

4. The OmniTerm/750t Network Setup screen will appear. Select "IP Address".

The OmniTerm/750t IP Address screen will appear.

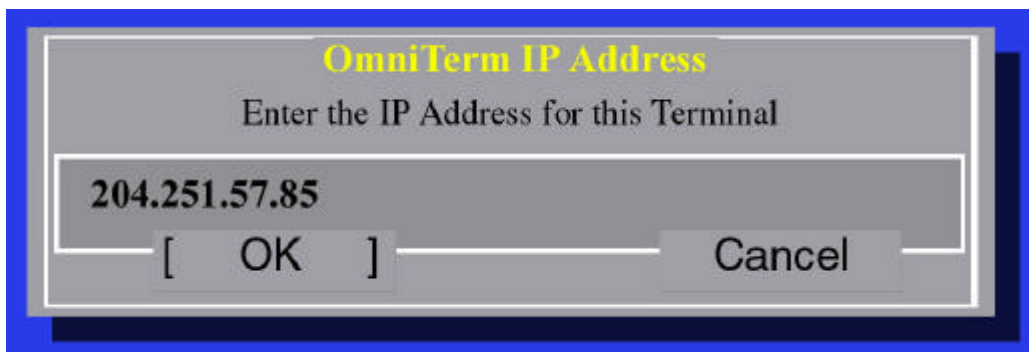


Figure 7: IP Address screen

5. Type in the IP Address that you will use for this unit.

Note: IP Address format: XXX.XXX.XXX.XXX.

6. Select "Netmask".

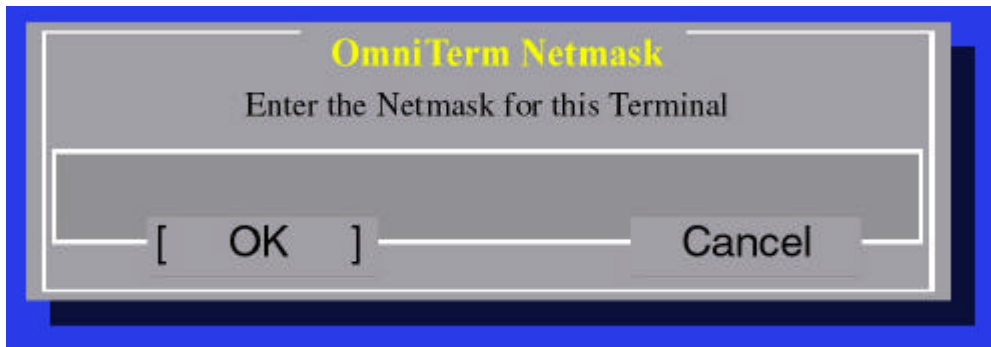


Figure 8: Netmask screen

7. Enter the Netmask of the network the OmniTerm/750t is on.
8. Select "Gateway".

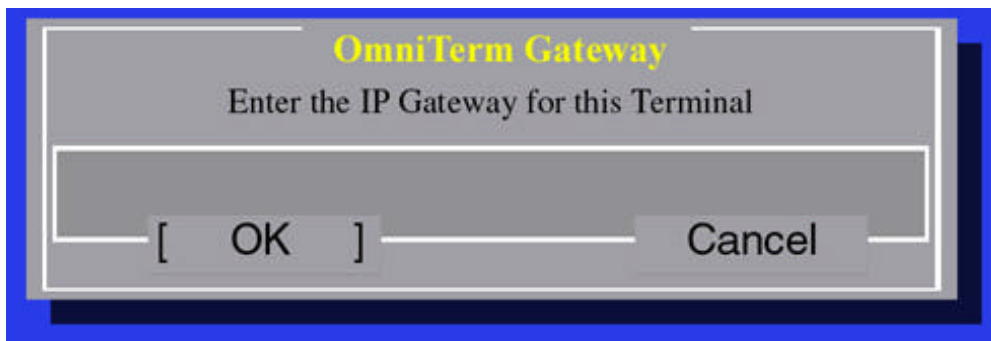


Figure 9: Gateway screen

9. If there is a gateway on this network, type in the Network Default Gateway IP address.
10. Select "Done". Press the Field Exit key to return to the Main OmniTerm/750t Setup menu.

Chapter 4

Remote Setup

Remote Configuration (OmniTerm/750t Main Menu):

“Remote Configuration” is a feature that allows the system administrator to use a Windows PC to build a configuration file that can be placed on any AS/400 or other server and then be automatically downloaded to an OmniTerm/750t as part of the power-up sequence.

For more information on using the Remote Configuration utility and this menu selection, see the Remote Configuration User's Manual (you can download the OmniTerm/750t Remote Configuration User's Manual at <http://www.nlynx.com/>).

Note: Leave this setting at “None” if you are not using “Remote Configuration” (version 4.0 or higher).

Chapter 5

Setup Sessions

OmniTerm/750t Setup (Main Menu):

From the OmniTerm Setup screen:

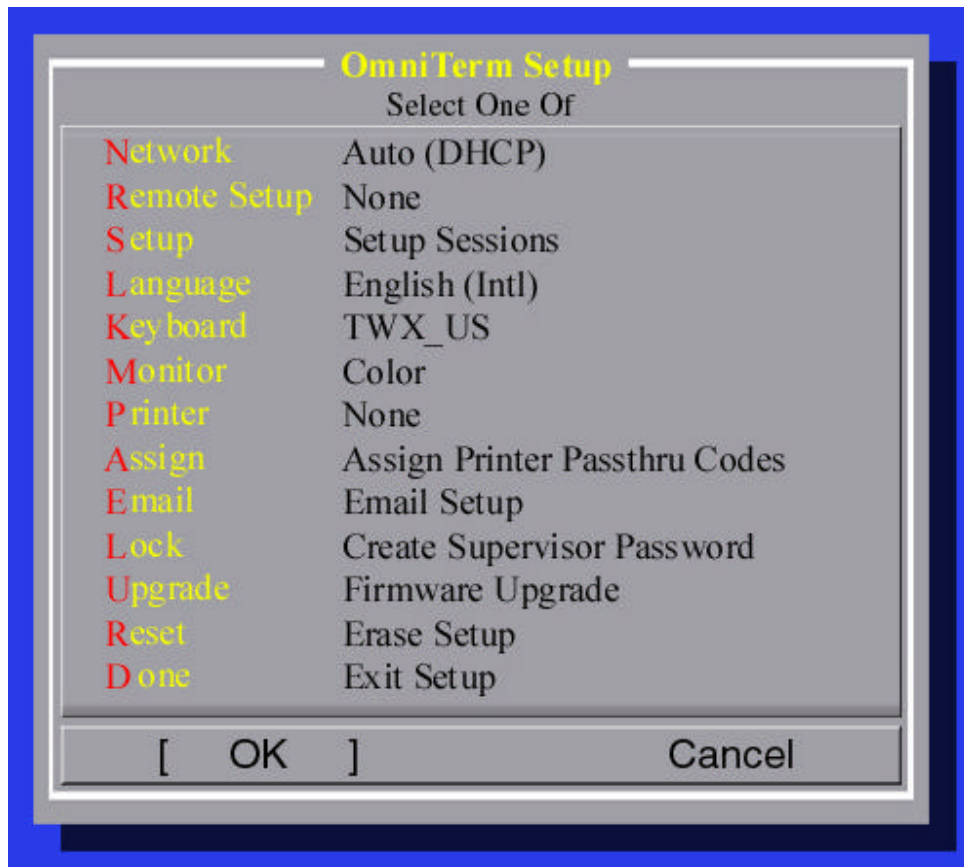


Figure 10: OmniTerm Setup screen

Note: The information that you enter and modify on each of the four host sessions, including colors, cursor type and video mode, will only affect that specific host session. Thus it is possible to use unique color combinations and(or) video modes to differentiate your different host connections.

1. Select "Setup" and the Setup Sessions screen will appear.

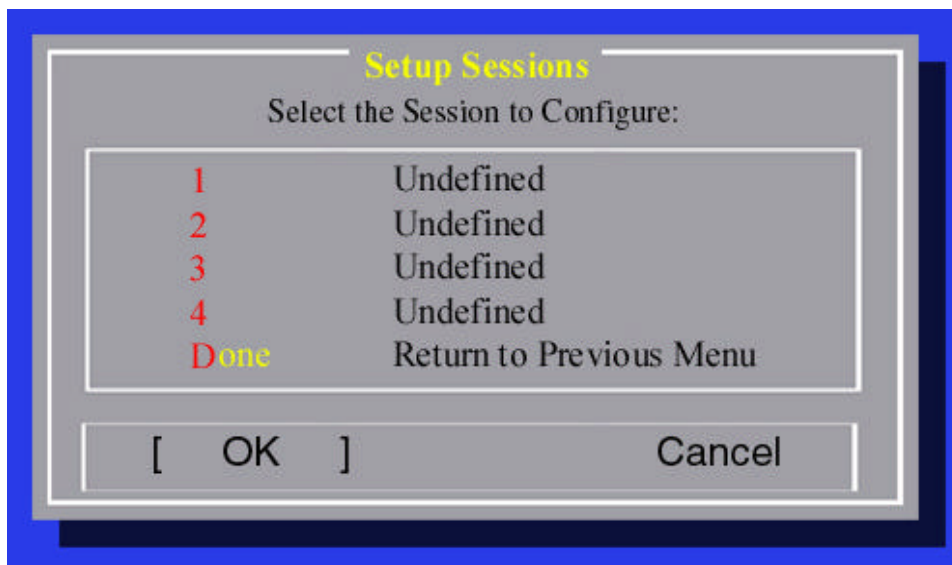


Figure 11: Setup Sessions screen

2. Select a session to configure. The “SessionType” window will appear.

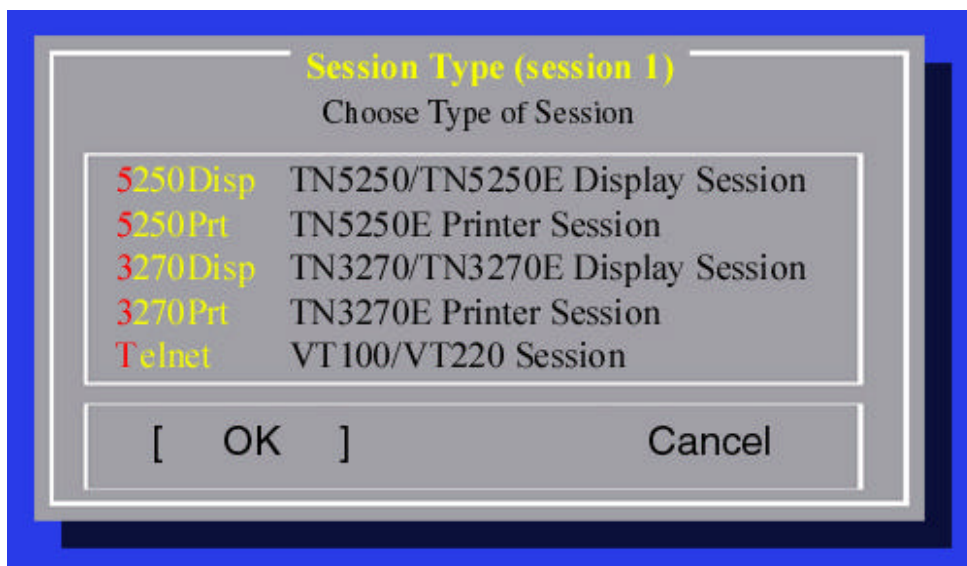


Figure 12: Session Type screen

Configuring TN5250/5250E Display Sessions:

1. For a TN5250/TN5250E Session, select “5250Disp” and a “Session” window will appear.

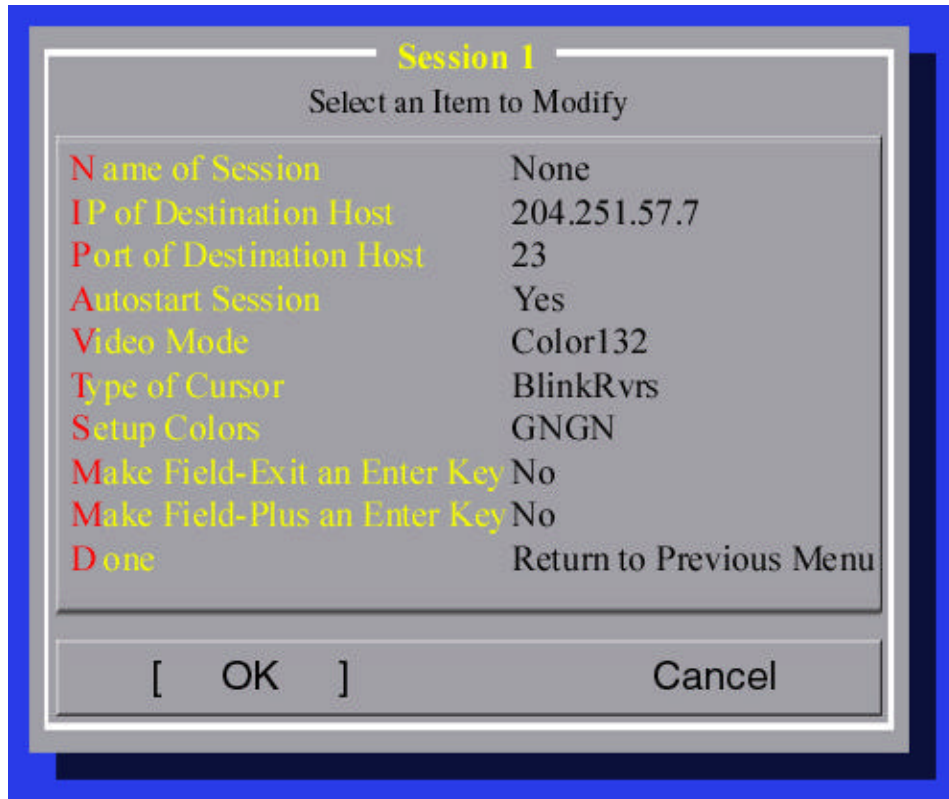


Figure 13: Session Modification screen

2. Select “Name of Session”.
3. For the “Session Name”, if your AS/400 supports TN5250E (Static Device IDs), type in the name you wish the host to configure this session and then press the Field Exit key.

Note: If your AS/400 does not support static device IDs, or if you want your host to assign a dynamic device ID, leave this selection blank.

4. Select “IP of Destination Host”.
5. For the “IP Address of Destination Host”, type in the IP address for the host this session will connect to.

Note: The following parameters are optional:

To change the default port (23):

6. Select “Port at Destination Host” and the “Destination Port” window appears.
7. Enter a new IP port.

To change the Autostart selection:

8. Select "Autostart Session" and the "Session Autostart" window appears.
9. Select "YES" to start the session automatically upon each power up, or select "NO" if you want to start the session manually.

To change the Video Mode

10. Select "Video Mode".
11. For "Video Mode Session", select the following:
 - **Color132:** to support the host color attributes and to automatically switch to 132 column mode when the host goes to this format
 - **Color80:** to support the host color attributes and to stay in 80 column mode at all times. In this mode, you will need to scroll to see 132 column screens.
 - **Mono132:** For monochrome displays and to automatically switch to 132 column mode when the host goes to this format.
 - **Mono80:** For monochrome displays and to stay in 80 column mode at all times. In this mode, you will need to scroll to see 132 column screens.

Note:

- You can select "mono" with a color monitor, but this limits your display to monochrome attributes.
- You should NOT select color if you have a monochrome monitor or your screen will appear dim.

To change the Cursor Type:

12. Select "Type of Cursor".

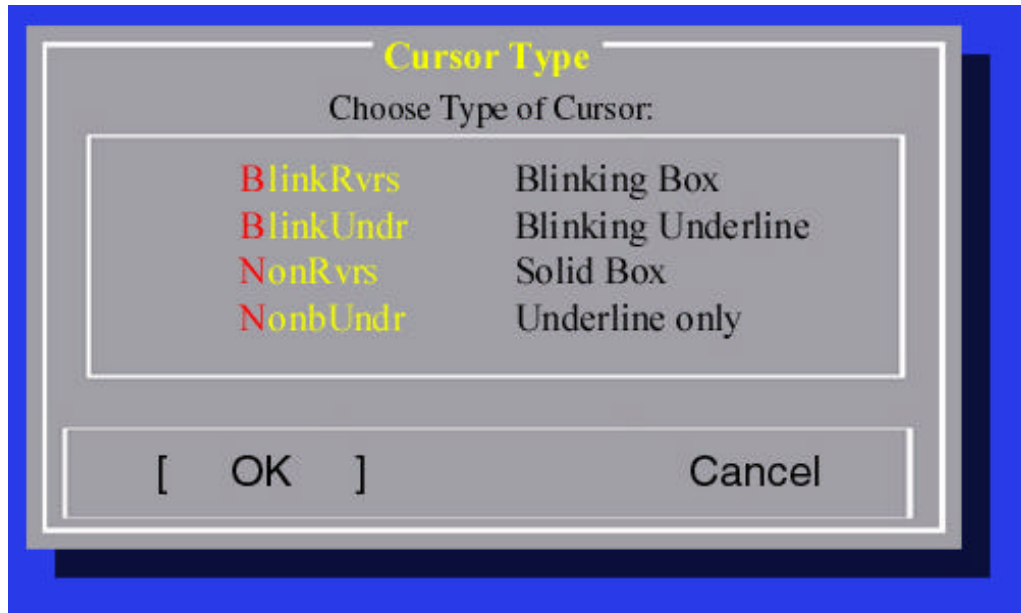


Figure 14: Cursor Type screen

13. To change your cursor type, select “Type of Cursor” and then select one of the following:

- **BlinkRvrs** – Blinking box, for this session
- **BlinkUndr** – Blinking Underline, for this session
- **NonbRvrs** – Solid Box, for this session
- **NonbUndr** – Underline only, for this session

To change the Color Type:

14. To change Text Background, Text Color, Status Line Background or Status Line Text Color, select “Setup Colors”. The “Display Colors for Session X” will appear.

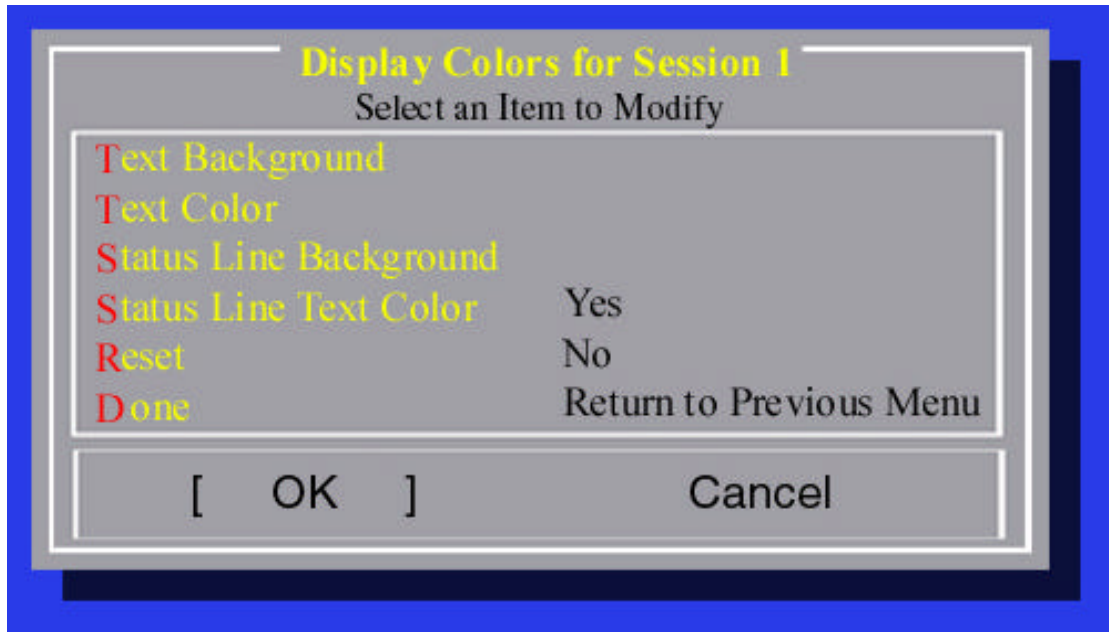


Figure 15: Select Colors screen

Note: G = green, N = black, R = red, W = white, B = blue, Y = yellow, C = purple, M = magenta.

To change any of the colors, choose an item to modify and the “Color Selection” screen will appear. Choose a color by highlighting it and pressing the Field Exit key.



Figure 16: Color screen

To add Host Enter keys:

15. Select “Make Field Exit an Enter Key”, or “Make Field-Exit an Enter Key”.

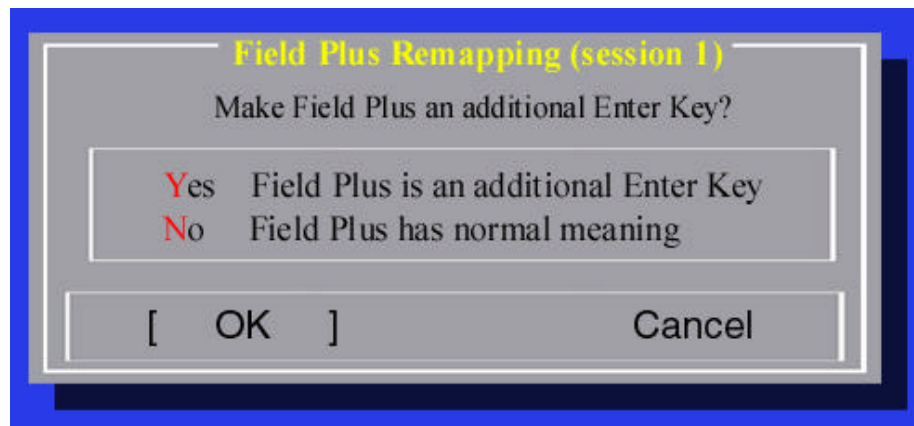


Figure 17: Field-Exit Remapping screen

16. The “Field-Exit Remapping” or “Field Plus Remapping” window pops up.
17. Select “YES” to enable this key as an additional Enter key, or select “NO” if you want this key to have normal meaning.
18. Select “Done” to return to the Main Menu.

Configuring a TN5250E Printer Session:

From the OmniTerm Session Type screen:

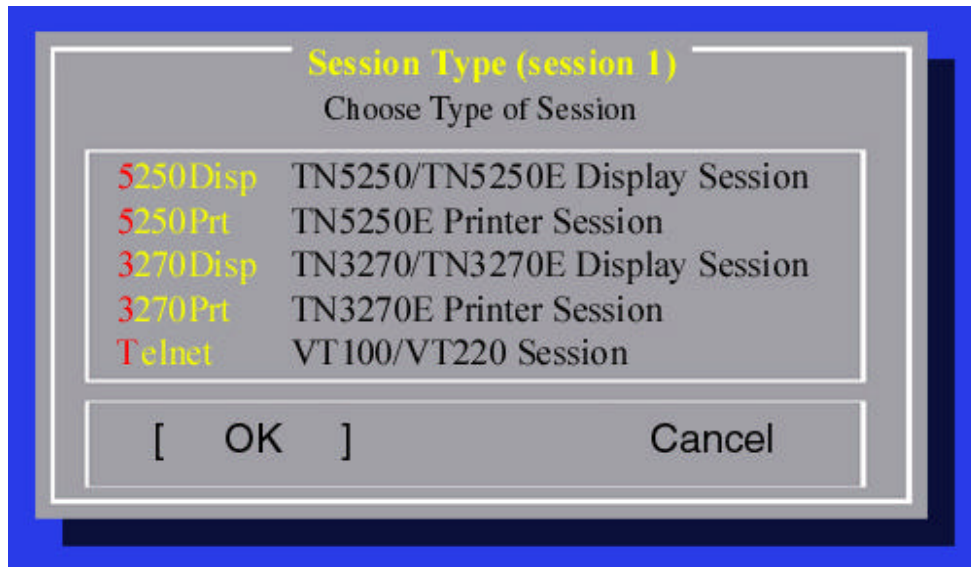


Figure 18: Session Type screen

1. Select “5250Prt” in the “Session Type” window and a “TN5250 Printer Session” window appears.

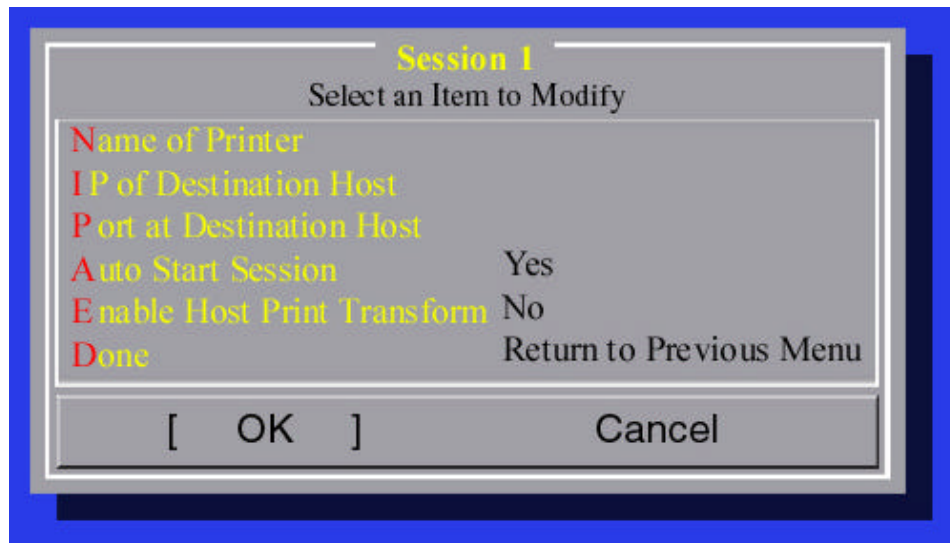


Figure 19: Session Modification screen

2. Select “Name of Printer”
3. For the “Session Name”, type in the name of the printer to use for this AS/400 Session.

Note: Do NOT leave this blank. You must enter a valid AS/400 Device ID here.

4. Select "IP of Destination Host".

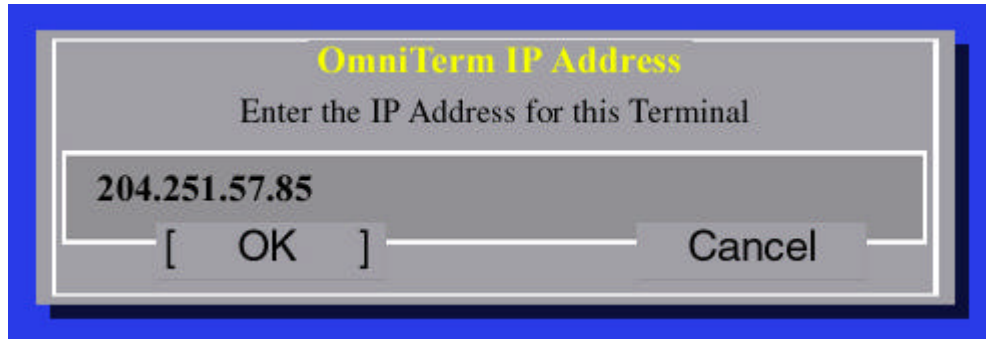


Figure 20:

5. For the "IP of Destination Host", enter the address for the AS/400 that this session will connect to.

To change the default port (23):

6. Select "Port at Destination Host" and the "Destination Port" window appears.
7. Enter the Destination Port.

To change the Autostart selection:

8. Select "Autostart Session".



Figure 21: Session Autostart screen

9. Select "YES" to start the session automatically, or select "NO" if you want to start the session manually.

To enable Host Print Transform:

10. Select "Enable Host Print Transform".

11. Select "Yes" to enable "Host Print Transform".
12. If you have not selected Host Print Transform, then select "Done" to return to the "Setup Sessions" menu.

Note: See your MIS Administrator for device settings entered here. By selecting Host Print Transform, the "Printer Selection Menu" will change and several new options appear. The settings here are determined by the printer you are using and OS/400. The most important setting here is "Host Print Transform Model". You must enter your printer model number here as it is listed in OS/400. **For example, the OS/400 V4R4, an EPSON DFX8000 is "*EPDFX8000".**

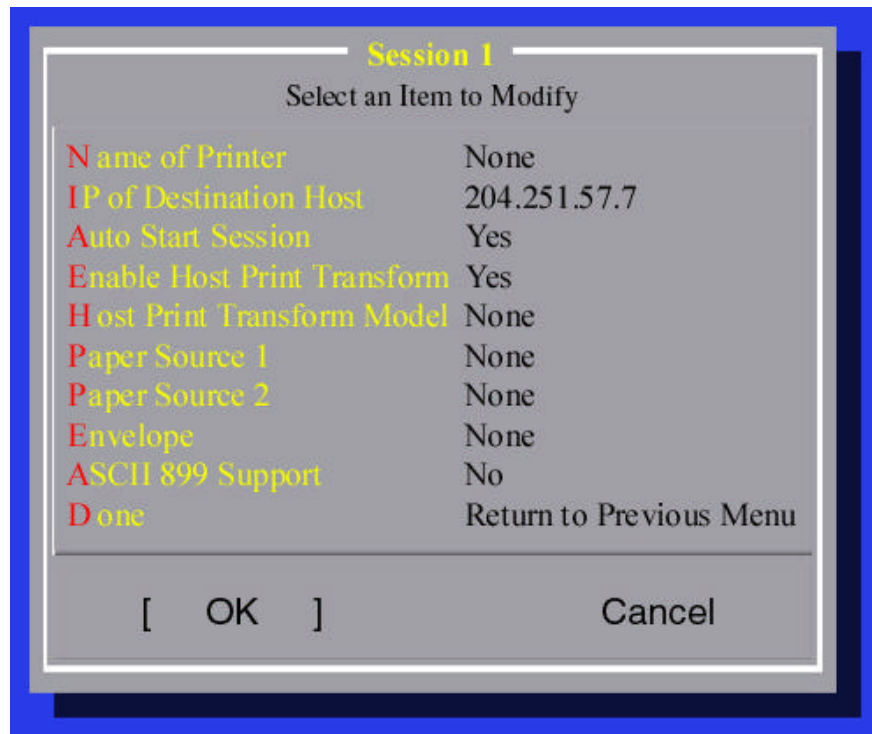


Figure 22: Session 1 screen

1. Select "Host Print Transform Model".

Note: The maximum characters entered here, is 10. This is a TN5250E RFC requirement. OS/400 has several Host Print Transform definitions that are more than 10 characters long. To use one of these definitions see APPENDIX G at the back of the User's Manual.

2. Enter MFG. Type and model number (MFRTYPMDL).

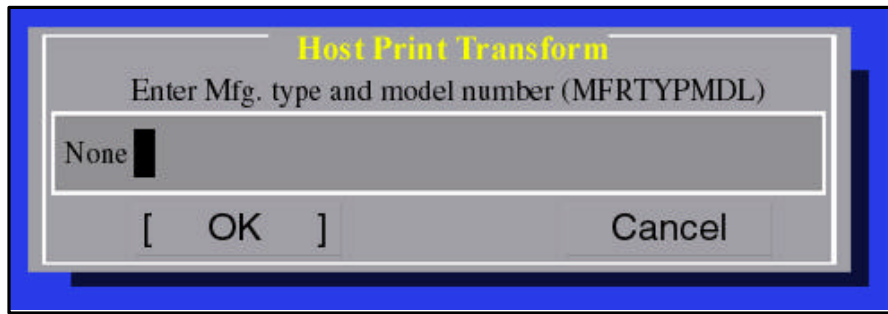


Figure 23: Host Print Transform screen

3. Enter the remaining Host Print Transform selections (Paper Source, Envelope and ASCII 899 Support).
4. Select "Done" to return to the Main Menu.

Configuring VT100/VT220 Sessions:

Note: See your MIS Administrator for device settings entered here.

1. For the VT100/VT220 Session, select “Telnet” in the “Session Type” window and a VT100/VT220 session window appears.

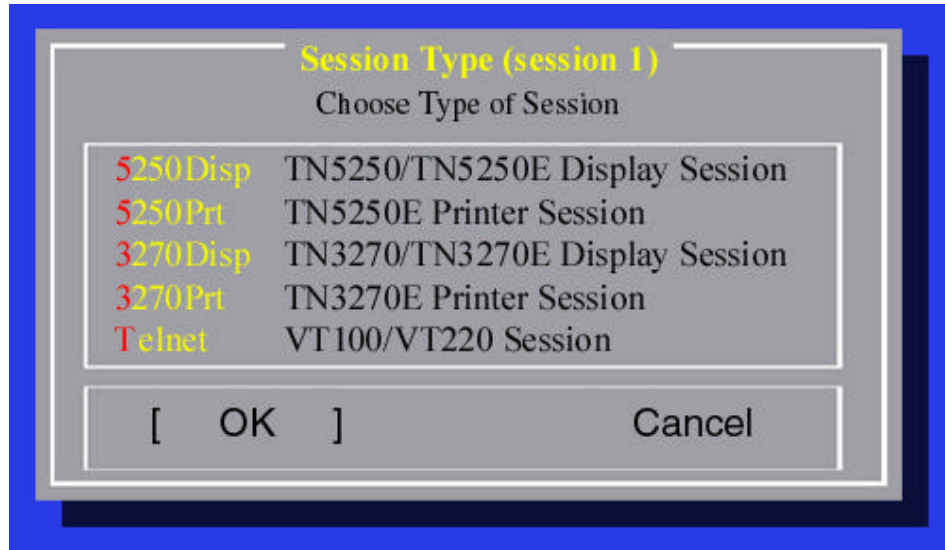


Figure 24: Setup Sessions screen

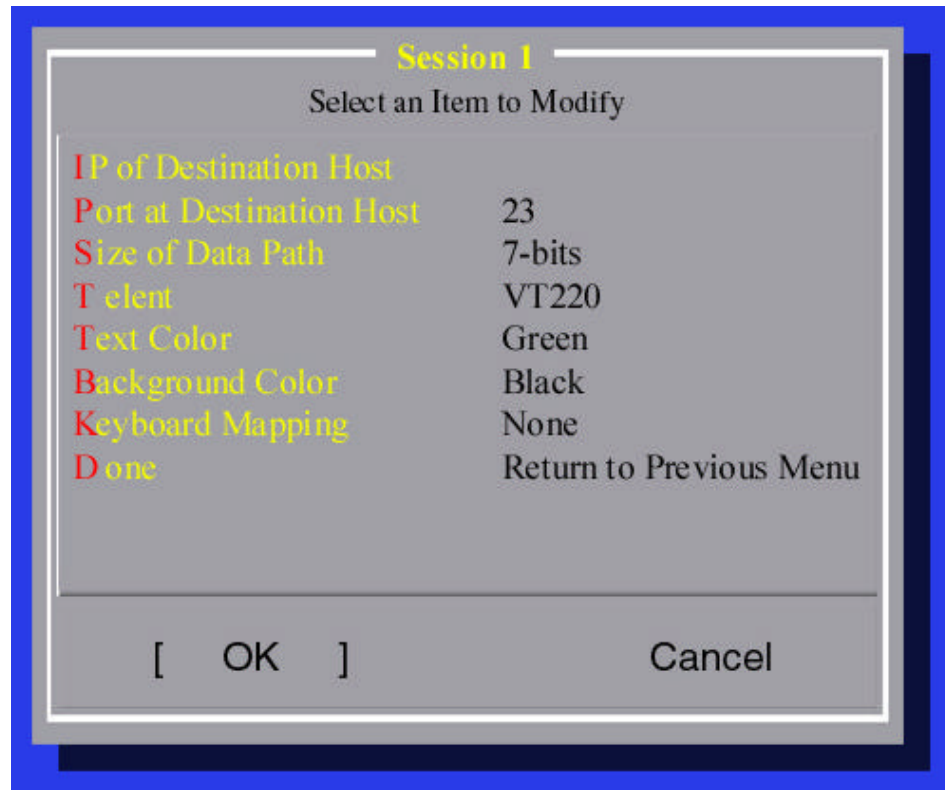


Figure 25: VT220 Session Setup screen

2. Select "IP of Destination"

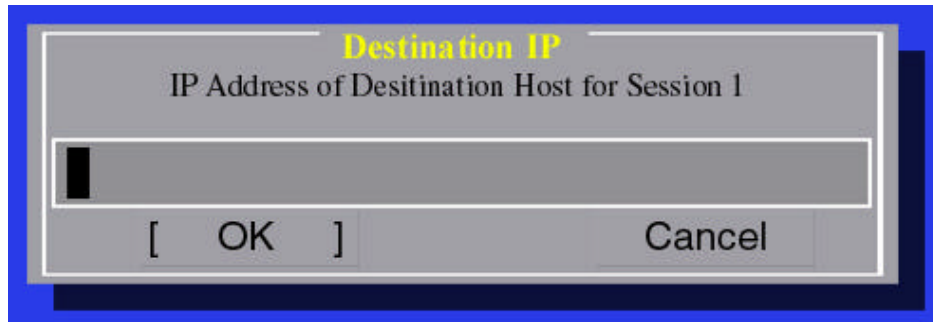


Figure 26: Destination IP screen

3. For the "IP of Destination Host", type in the address for the host this session will connect to.

To change the default port (23):

4. Select "Port at Destination Host" and the "Destination Port" window appears.
5. Enter a new IP port.

To change the Data Path size:

6. Select "Size of Data Path" and the "Select Data Path Width" window appears
7. Select either 8-bits (International Character Sets), or 7-bits (Standard ASCII).

Note: The International character set will only work with 8-bits. The "7-bit" selection is for standard ASCII only.

To change the Telnet emulation type:

8. Select "Telnet".
9. Select either "VT200" or "VT100".

To change the Session Colors:

10. Select "Text Color".

11. Enter a color.



Figure 27: Text color screen

12. Select "BackgroundColor".

13. Enter a color.



Figure 28: Background color screen

12. If you are using VT220 keyboard mappings, then select “Keyboard Mapping” and the “Function Key Remapping for VT220” window appears. For information on building keymaps see “Kmapping” in Chapter 7.

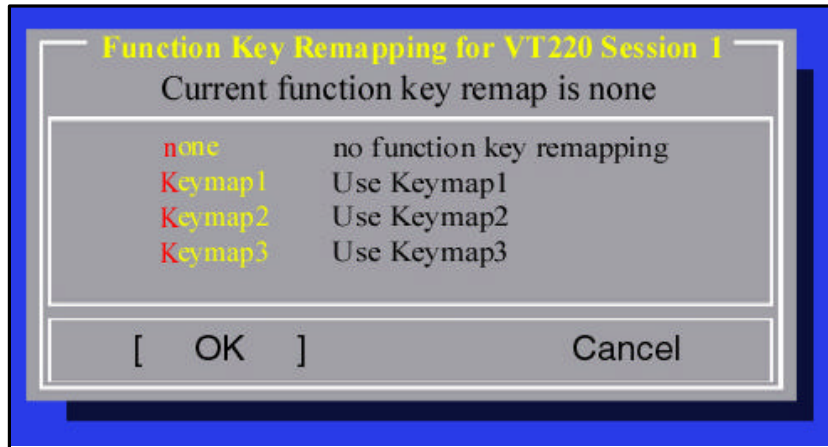


Figure 29: Function Key Remapping screen

13. Select one of the Keymaps for this VT220 Session.
14. Select “Done” to return to the Main Menu.

Configuring TN3270/TN3270E Display Sessions:

1. For a TN5250/TN5250E Session, select “3270Disp” and the TN3270E Session window will appear.

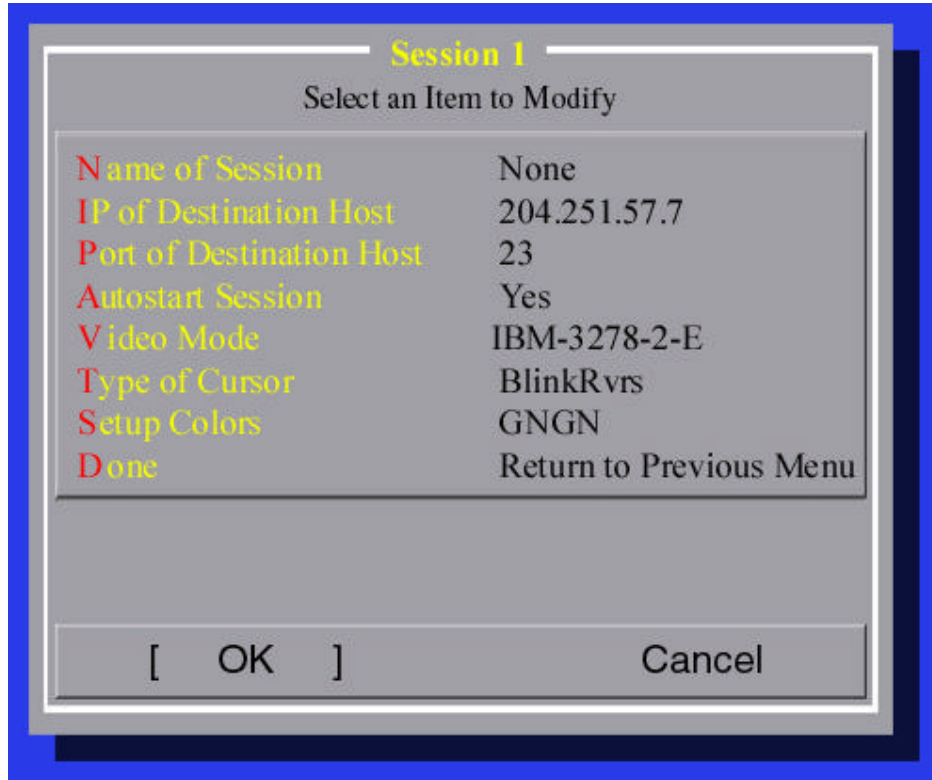


Figure 30: Session Modification screen



Figure 31: TN3270E Session Modification screen

2. Select “Name of Session”.

3. For the "Session Name", if your host supports TN3270E (Static Device IDs), type in the name you wish the host to configure this session and then press the Field Exit key.

Note: If your host does not support static device IDs, or if you want your host to assign a dynamic device ID, leave this selection blank.

4. Select "IP of Destination Host".
5. For the "IP Address of Destination Host", type in the IP address for the host this session will connect to.

To change the default port (23):

6. Select "Port at Destination Host" and the "Destination Port" window appears.
7. Enter a new IP port.

To change the Autostart selection:

8. Select "Autostart Session".
9. Select "YES" to start the session automatically upon each power up, or select "NO" if you want to start the session manually.

To change the emulation type:

10. Select "Video Mode".
11. For "Video Mode Session", select the following:
 - **IBM-3278-2-E:** 24 row x 80 col
 - **IBM-3278-3-E:** 32 row x 80 col
 - **IBM-3278-4-E:** 43 row x 80 col
 - **IBM-3278-5-E:** 27 row x 132 col

To change the cursor type:

12. Select "Type of Cursor".

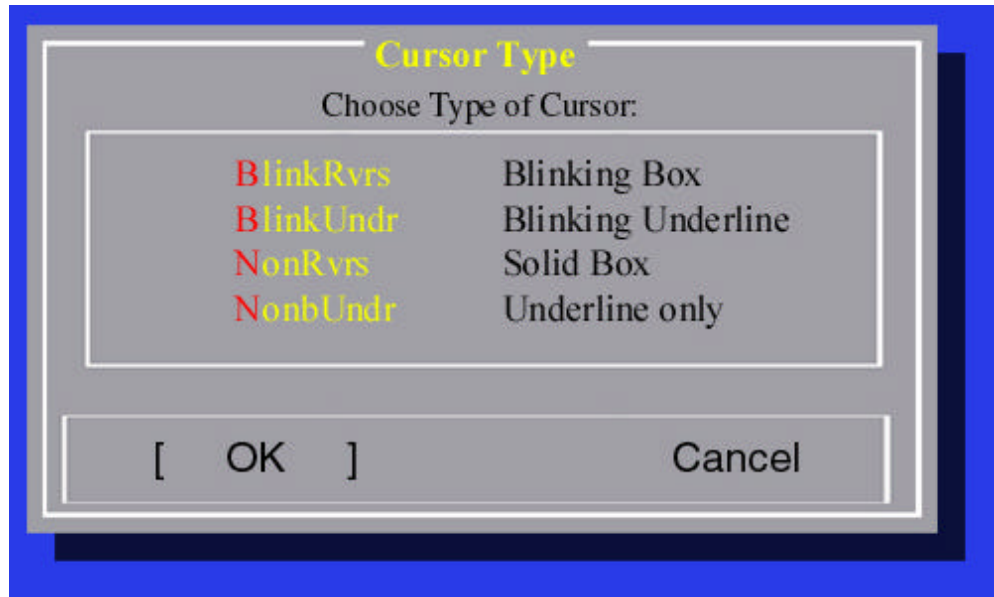


Figure 32: Cursor Type screen

13. To change your cursor type, select “Type of Cursor” and then select one of the following:

- **BlinkRvrs** – Blinking box, for this session
- **BlinkUndr** – Blinking Underline, for this session
- **NonbRvrs** – Solid Box, for this session
- **NonbUndr** – Underline only, for this session

To change Text Background, Text Color, Status Line Background or Status Line Text Color, select “Setup Colors”. The “Display Colors for Session X” will appear.

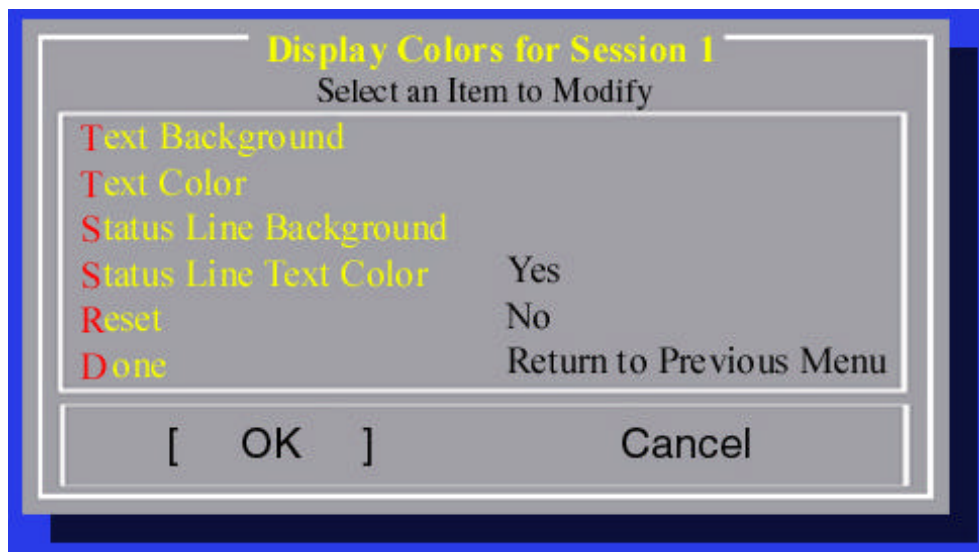


Figure 33: Select Colors screen

Note: G = green, N = black, R = red, W = white, B = blue, Y = yellow, C = purple, M = magenta.

To change any of the colors, choose an item to modify and the “Color Selection” screen will appear. Choose a color by highlighting it and pressing the Field Exit key.



Figure 34: Color screen

Configuring TN3270E Printer Sessions:

1. For a TN3270E Printer Session, select “3270Prt” and a Session window will appear.

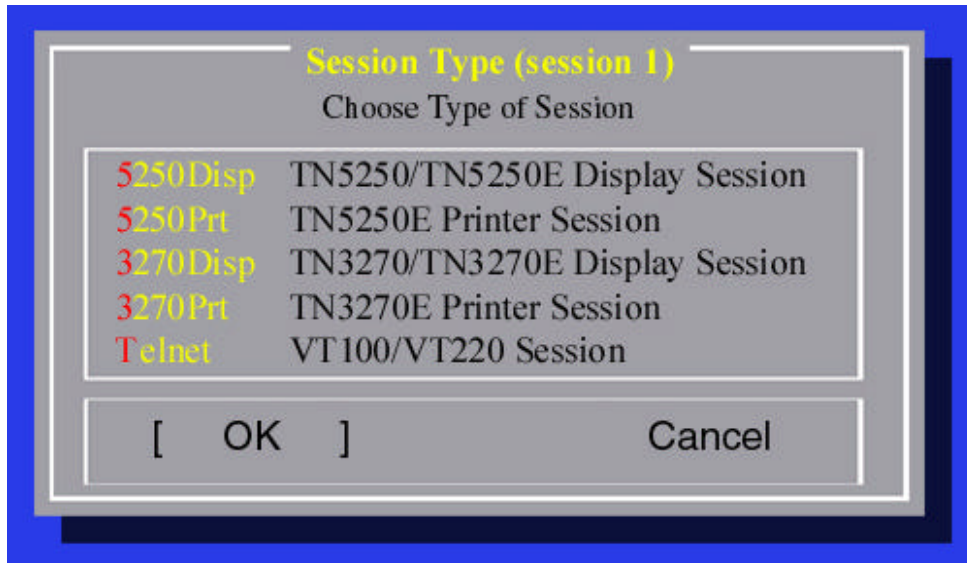


Figure 35: Session screen

2. Select “Name of Printer” and the “Name for Session” window appears.

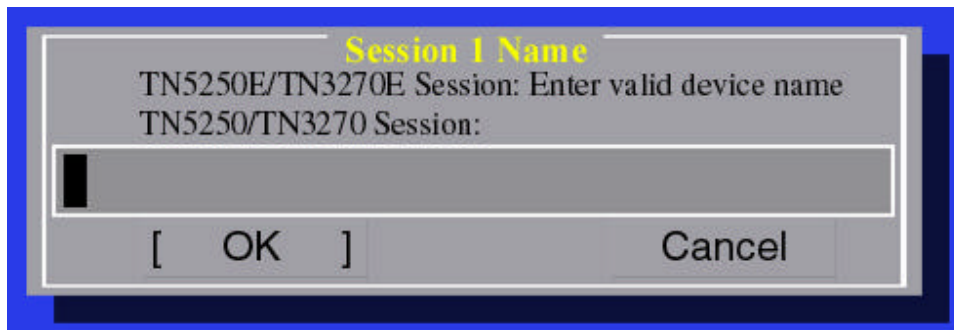


Figure 36: Session Name screen

3. Enter a valid device name.

Note: Do NOT leave this selection blank. You must enter a valid device ID here.

4. Select “IP of Destination” and the “Destination IP” window appears.
5. For the “IP of Destination Host”, type in the address for the host this session will connect to.

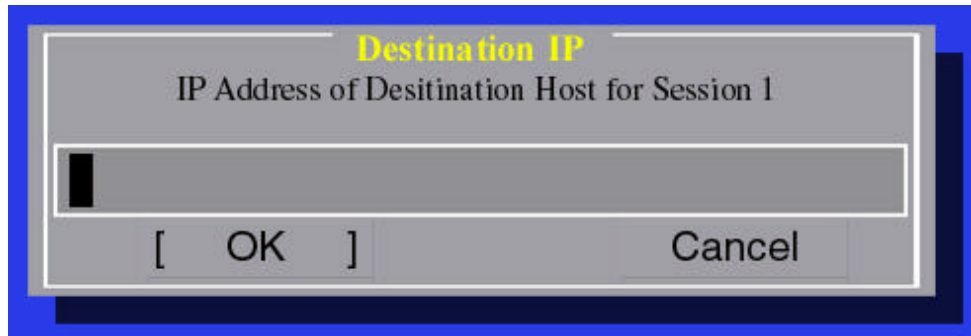


Figure 37: Destination IP screen

To change the Autostart selection:

6. Select "Autostart Session".
7. Select "YES" to start the session automatically upon each power up, or select "NO" if you want to start the session manually.
8. Select "Done" to return to the Main Menu.

Chapter 6

Language and Font Selection

Language Selection (OmniTerm/750t Main Menu) :

Note: This selection will modify the language to be used when configuring the OmniTerm/e. This selection does not change the email user interface which is currently U.S. English only.

From the OmniTerm Setup menu:

1. Select “Language”.
2. The *OmniTerm/750t Language Selection* window pops up and the message “Select Language—Langag--Idioma” appears. The “English” option will be highlighted.

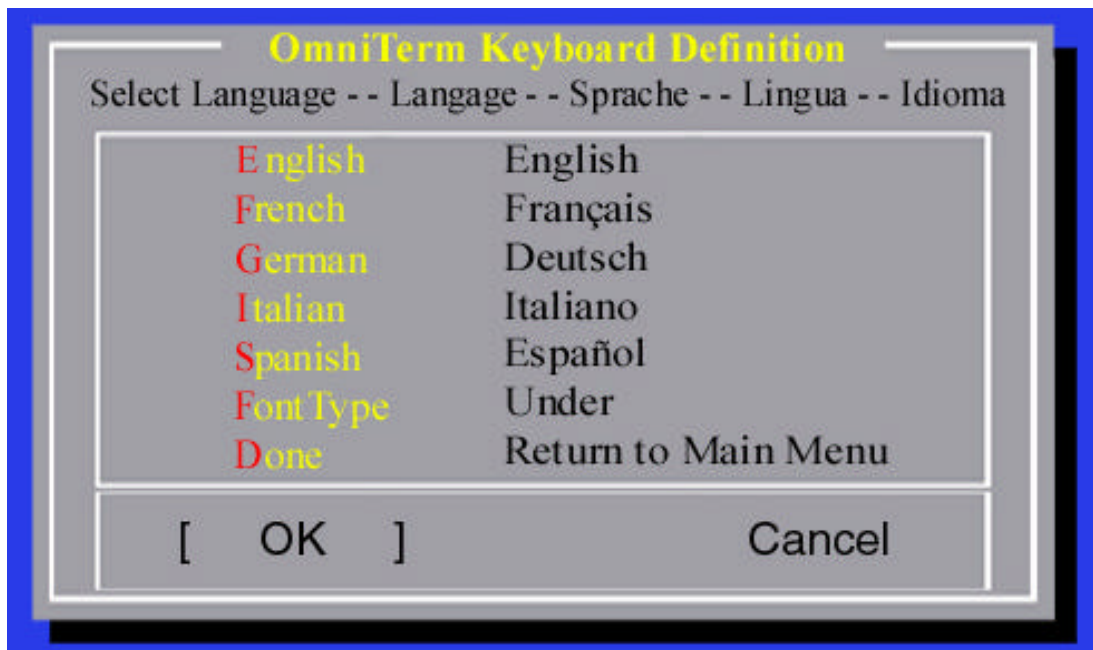


Figure 38: Language Selection screen

3. Select the appropriate Language by highlighting it and hitting the Field Exit key. The “Language Selection” screen will change immediately to the language selected.

Font Types:

Note: For any language there are three possible Font Types: (1) **Intl** - the EBCDIC Multinational Character set; (2) **Local** – the EBCDIC character set for the associated language; (3) **Under** - the special data entry font provided with true underlines for

empty (or space) positions entered into the field. Do NOT select “under” for languages that use Diacritics.

To select a font:

1. Select “FontType” from the Keyboard Definition menu. The “Type of Font” window will appear.

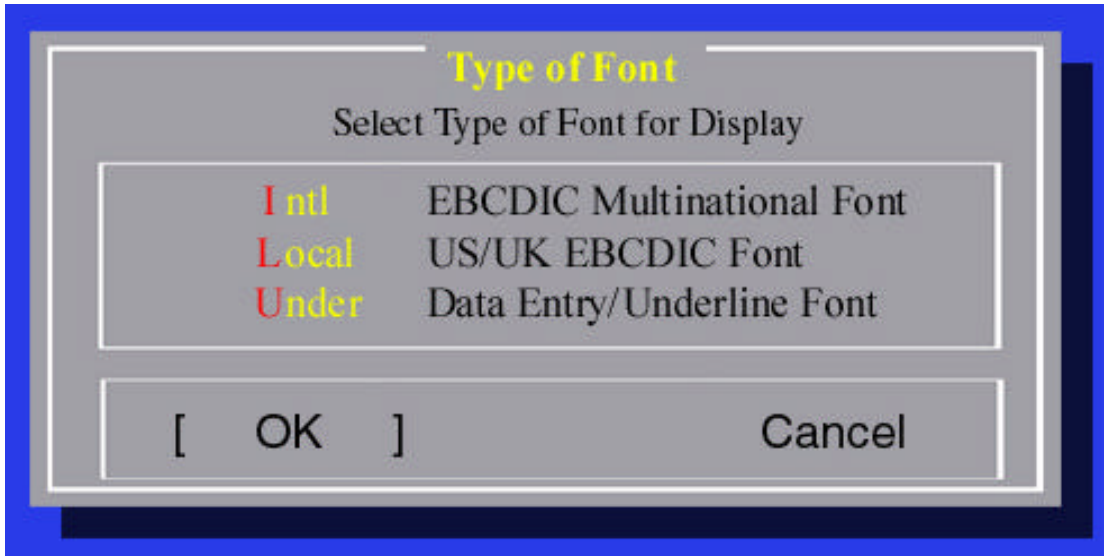


Figure 39: Font Selection screen

2. Select type of font for Display.
3. Select “Done” to return to the Main Menu.

Chapter 7

Keyboard Selection and VT220 Keymapping

Keyboard Selection (OmniTerm/750t Main Menu):

Note: DEFAULT SETTING: TWX_US

Use the following steps to change the keyboard selection if you are using a N Lynx Technologies 5250 or 3270 keyboard:

1. To change the keyboard selection from the default TWX_US (DD5250 keyboard), use the arrow keys (or hit the “K” key) to highlight “Keyboard” then hit the Field Exit key.
2. The “Keyboard Definition” menu will appear.
3. Highlight and then select “Select Keyboard”.
4. The “Keyboard Type” menu will appear.

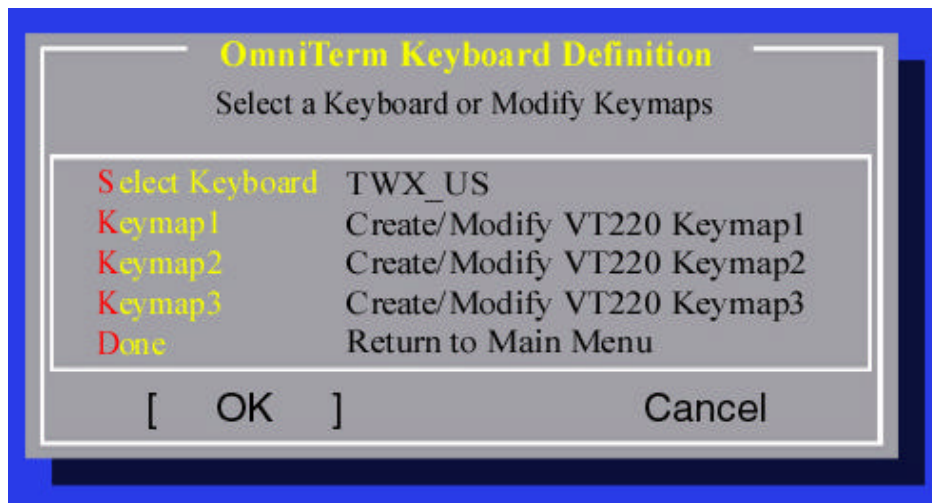


Figure 40: OmniTerm/750t Keyboard Definition screen

5. Highlight and then select your keyboard type.
6. Select “D” to return to the Main Menu.
7. Save the keyboard changes you have made by exiting the setup menu and power OFF/ON your OmniTerm/750t unit.

...or

Use the following steps to change the keyboard selection if you are using an OmniTerm/750t keyboard (RED PF4 key in the upper right corner) or a U.S. PC keyboard:

Note: The arrows on your keyboard will not work until the process is complete.

1. From the OmniTerm/750t Main Configuration menu, highlight “Keyboard” by hitting the “K” key.
2. Select “Keyboard” by hitting the Field Exit or Enter key

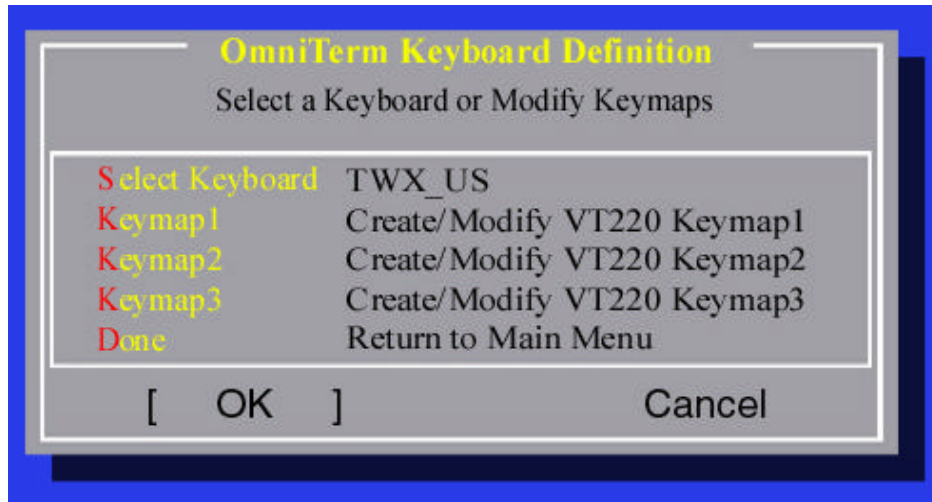


Figure 41: OmniTerm/750t Keyboard Definition screen

3. Highlight “Select Keyboard” on the OmniTerm/750t Keyboard Definition window by hitting the “S” key. Then select it by hitting the Field Exit key.

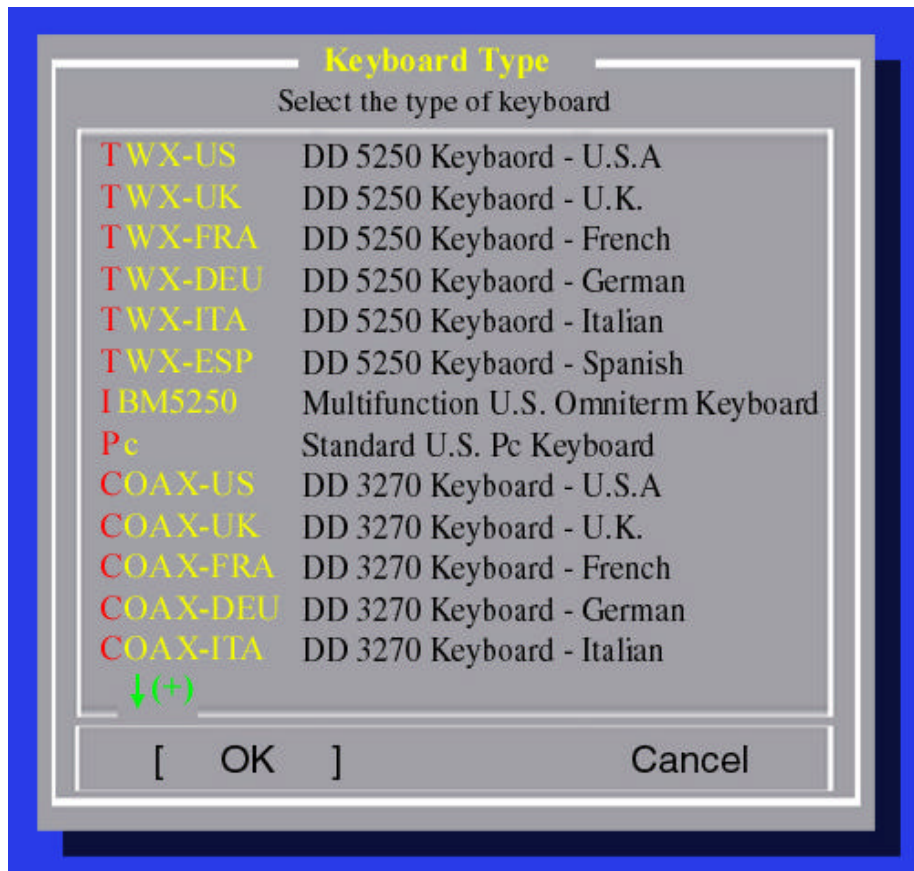


Figure 42: Keyboard Type screen

4. When the “Keyboard Type” menu appears, highlight “IBM5250” by hitting the “I” key (for the OmniTerm/750t keyboard) or “PC” by hitting the “P” key. Then select it by hitting the Field Exit key.
5. Select “Done”.
6. Select “Done” again to save the new setup information.
7. Power OFF/ON your OmniTerm/750t unit and continue with any additional configuration changes.

Keymapping

Keymapping is a feature that allows you to assign a VT220 function or group of characters to a function key.

Note: Keymapping is a function of VT emulation (see VT220 Setup for information on how to choose a keymap that you build here). You can build three different keymaps so it is possible to have three VT220 sessions, each with a different keymap.

From the OmniTerm Keyboard Definition menu:

1. Select “Keyboard” and the “OmniTerm Keyboard Definition” window appears.

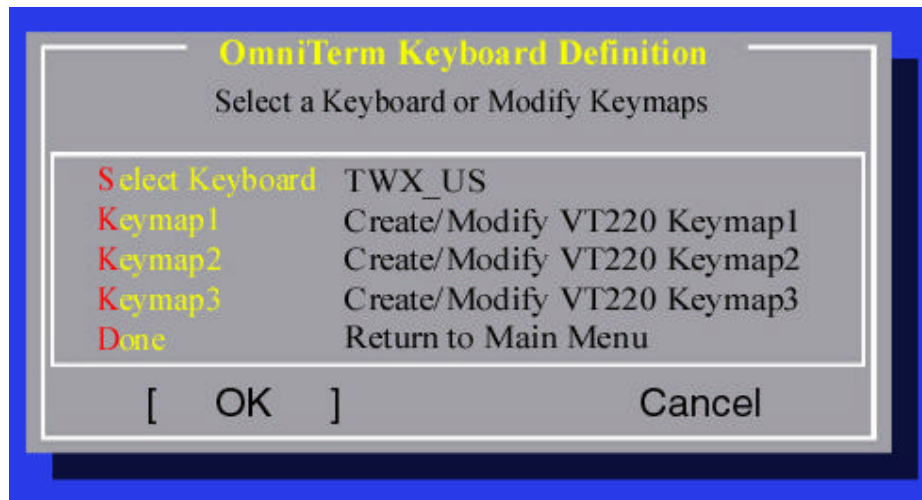


Figure 43: Keyboard Definition screen

2. Select a "Keymap" and that "Keymap" window appears.

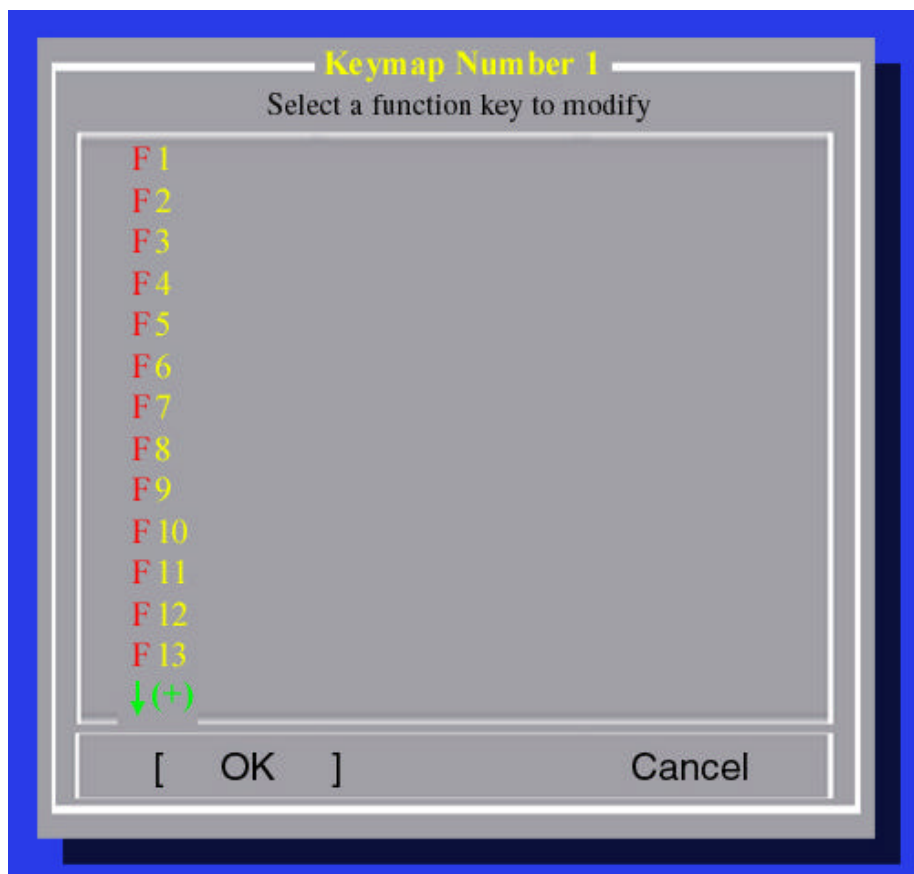


Figure 44: Keymap Number screen

3. To use a function key, highlight it and then select it.
4. The “Keymap” menu for that function key will appear.

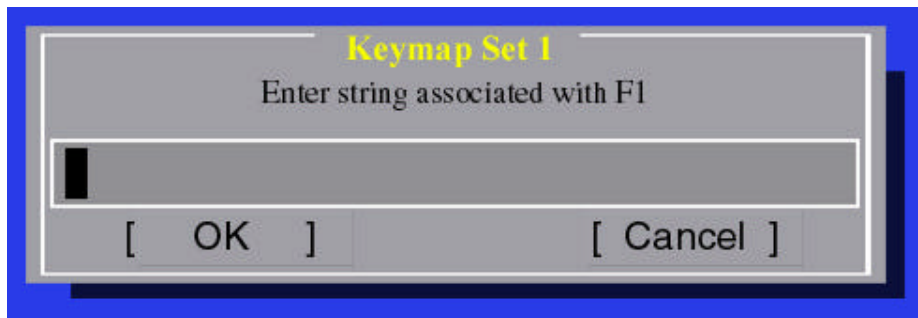


Figure 45: Keymap Set screen

5. Enter the data that you want to use for this function key and then hit the Field Exit key.
6. Repeat steps 3 through 5 for additional function keys.
7. Highlight and select “Done” to return to the “Keyboard Definition” menu.
8. Select another “keymap”, or select “Done” to return to the Main Menu.

Chapter 8

Monitor Selection

Monitor Setup (OmniTerm/750t Main Menu):

Note: This selection only affects the email, TNVT and TN3270 sessions. The AS/400 session colors are set within the “Setup Sessions” menu, for each individual AS/400 session. If you select “Color”, but use a monochrome monitor, the display may be difficult to read.

To change the monitor selection, from the OmniTerm Setup menu:

1. Select “Monitor”.
2. Select either “Color” or “Monochrome”.

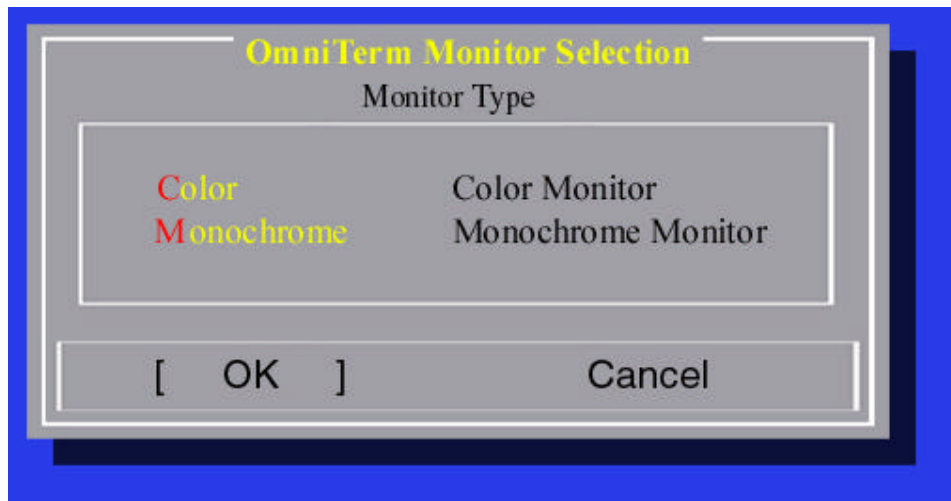


Figure 46: Monitor Selection screen

Chapter 9

Printer Selection

Printer Selection (OmniTerm/750t Main Menu):

Notes:

- Skip this section if you are not attaching a PC-Type printer to this unit.
- Host Printing will only work on a host that supports TN5250E or TN3270E sessions.
- You must select one of the four printer types here (even if you are attaching a different printer and using ASCII pass through or Host Print Transform to control the printer. If you are not sure what printer to use, select "IBM". If you leave this selection as "None", then neither screen printing nor host printing will work.
- Because the OmniTerm/750t can support concurrent local and host printing it is possible to configure different printer drivers which may, or may not work. For Example:
 - The OmniTerm/750t has an EPSON PC-type printer attached to it.
 - In this "Printer Selection" menu you have chosen "EPSON"
 - In session #2, you have configured a TN5250E printer session, with Host Print Transform on, and a model of *IBM42082"
 - This configuration may, or may not, work depending on the printers capabilities.
 - a. For local screen printing (the OmniTerm/750t takes the data off the screen and sends it to the printer), the data will be sent in EPSON FX mode (because that is what was selected in the "Printer Selection" menu).
 - b. For host printing, including host screen printing (where OmniTerm/750t tells the AS/400 to print the screen), the data will be sent to the printer from the AS/400 in the ProPrinter XL mode because that is what was selected in Host Print Transform.
 - c. If your printer can automatically switch between the two modes, then your printer output is fine. However, if your printer cannot automatically switch between the two modes, then host printing or screen printing will not work.

From the OmniTerm Setup menu:

1. Select "Printer".
2. The **Printer Type** window appears and the message "Select the Printer Type" appears. The "None" option will be highlighted. Choose the appropriate printer.

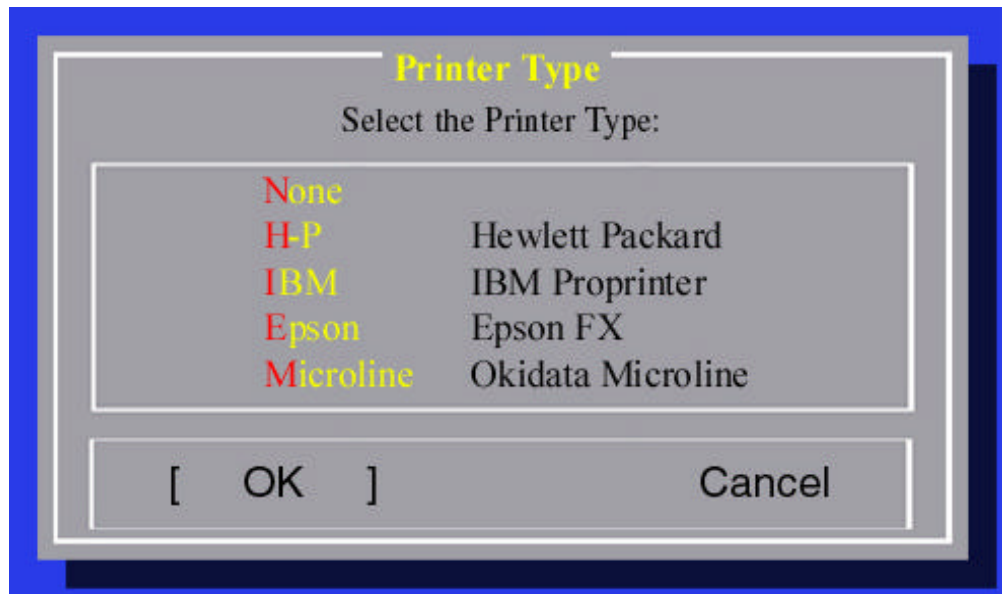


Figure 47: Printer Type screen

- For PCL printers, select “Hewlett-Packard PCL Printer”.
- For IBM dot matrix printers, select “IBM ProPrinter”.
- For Epson dot matrix printers, select “Epson FX”.
- For Okidata dot matrix printers, select “Okidata Microline”.

Printing

Note: For more information on using the OmniTerm/750t printing utility, see the “Keyboard Navigation” section.

Chapter 10

Assigning Passthru Codes

Assign Printer Passthru Codes (OmniTerm/750t Main Menu):

Printer Passthru allows your applications to control the printer. Normally the OmniTerm/750t will convert the host “print data stream” to a PC “print data stream”. When you enter EBCDIC characters in this menu the OmniTerm/750t will watch for these to appear in the host printer data stream. When they do appear, then the OmniTerm/750t will stop translating the print data from the host. The OmniTerm/750t will continue in this mode until it is powered off or until it recognizes the EBCDIC characters sent from the host indicating the end of the passthru.

Note: Do not use printer passthru if you have configured this unit for more than one printer session.

1. To Configure Printer Passthru Codes, select “Assign” and the “Printer Passthru Codes” window will appear.

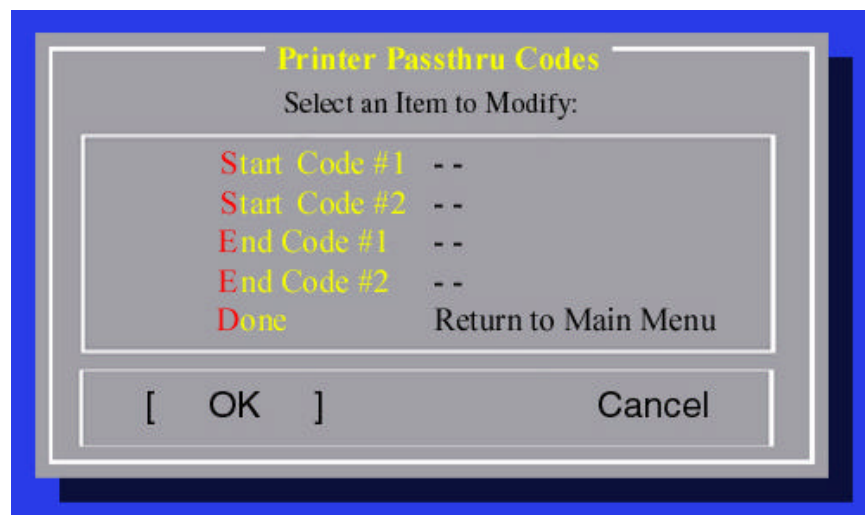


Figure 48: Printer Passthru Codes screen

2. Enter the EBCDIC codes that your application will use to start and end Printer Passthru. Press the “Field Exit” key.

Notes:

- When you enter the EBCDIC codes, backspace over the “-“ symbol and then enter your codes. Do not enter your codes after the “-“ symbols.
- APPENDIX C (page 60) lists EBCDIC codes.

Chapter 11

Email

Email Setup (OmniTerm/750t Main Menu):

Note: If you are not configuring this unit for email you can skip this section.

From the OmniTerm Setup menu:

1. Select “Email” and the “OmniTerm Email Setup” window appears.

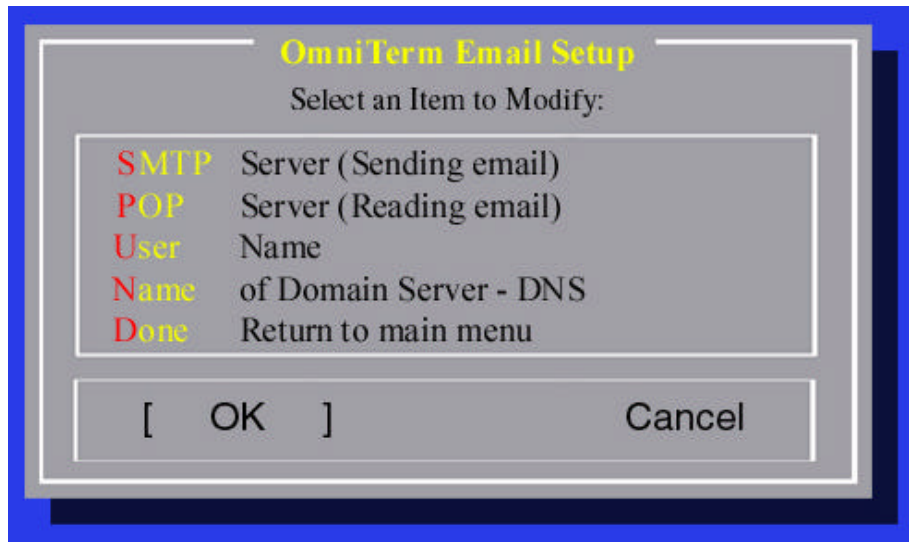


Figure 49: Email Setup screen

2. Select SMTP to enter the IP address of your outbound mail server. The “SMTP Host” window appears.

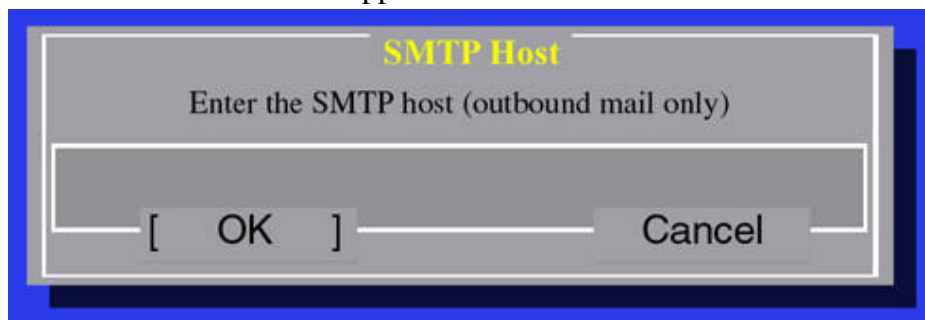


Figure 50: SMTP Host screen

3. Enter the SMTP host IP address.

Note: SMTP host format: XXX.XXX.XXX.XXX

4. Select "POP Server" and the "Pop Host" screen appears.

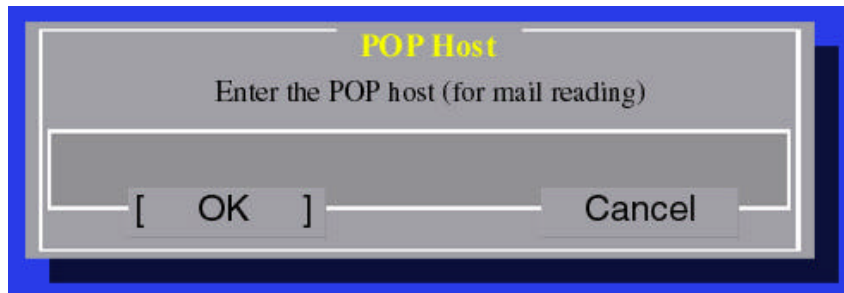


Figure 51: POP Host screen

5. Enter the POP host IP address.

Note: In most environments the SMTP and POP server will be the same server.

6. Select "User Name" and the "Email Sender ID" window appears.



Figure 52: Email Sender ID screen

7. Enter the user's Email User ID.
8. Select "Name of Domain Server (DNS)" and the "Email Domain Name" window appears.

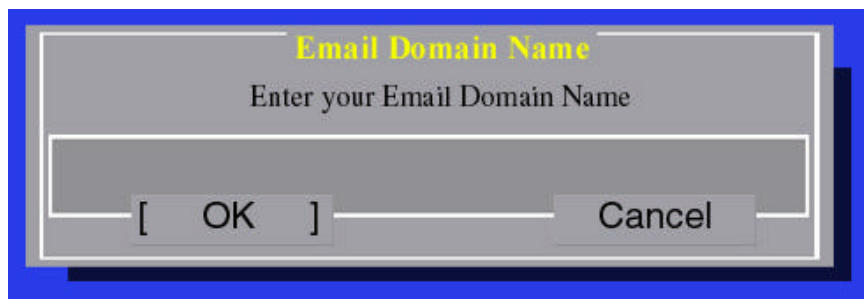


Figure 53: Email Domain Name screen

9. Enter the Domain name of the mail server.

Note: This name is generally the same as you would use in your email address. For example, if your email were robertgerlach@company.com, then you would enter "company.com" here. Refer to APPENDIX D for Email Usage.

Chapter 12

Locking Setup with Password

Lock Setup (OmniTerm/750t Main Menu):

The “Lock Setup” option allows you to enter a password to protect the OmniTerm/750t configuration.

From the OmniTerm Setup menu:

1. Select “Lock” and the “Set Configuration Password” window appears.

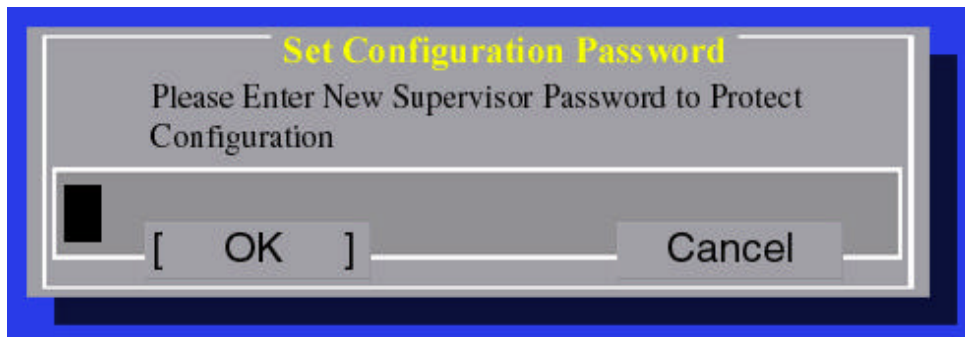


Figure 54: Lock Configuration screen

2. Enter a Supervisor Password and then press the Field Exit key. At this point, you will be asked to re-enter the password to confirm it. Enter the password a second time and press the Field Exit key.
3. Select “Ok”.

Note: The Supervisor lock will become effective after you exit the off-line configuration.

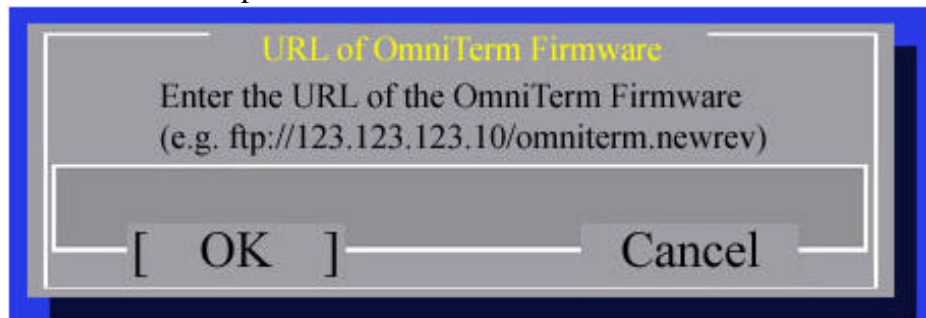
Chapter 13

Upgrades and Patches

Upgrade (OmniTerm/750t Main Menu):

Firmware upgrade is used to download new applications and application patches for your unit. Upgrades and patches can be downloaded from the N Lynx Technologies FTP server; or your FTP server, or AS/400.

From the OmniTerm Setup menu:



1. Select “Upgrade” and “URL of OmniTerm/750t Firmware” window appears.

Figure 55: URL of Firmware screen

2. Enter the URL of the OmniTerm/750t Firmware and press the Field Exit key.

The upgrade process will download all the files to the unit and then ask you if you wish to apply them. If you have problems during this download phase you can restart the unit with no damage to the configuration files.

N Lynx Technologies releases new application software and patches on a regular basis. Information where to get these upgrades, what they contain and how to download them are in the “Demos and Download” area of <http://www.nlynx.com/>.

Chapter 14

Reset Configuration

Erase Setup (OmniTerm/750t Main Menu):

1. To erase a configuration, select “Reset”.
2. The “**Danger**” window pops up and the message “This will erase your Setup Information. Do you really want to do this?” message appears.

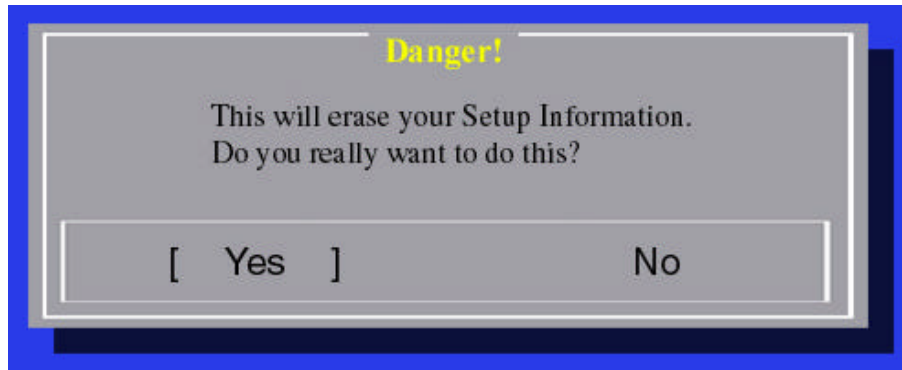


Figure 56: Erase Setup screen

3. Choose “Yes” to erase changes or “No” to cancel.

Exit the Setup (OmniTerm/750t Main Menu):

1. Select “Done” to exit setup and the "Save New Setup Information?" window appears.

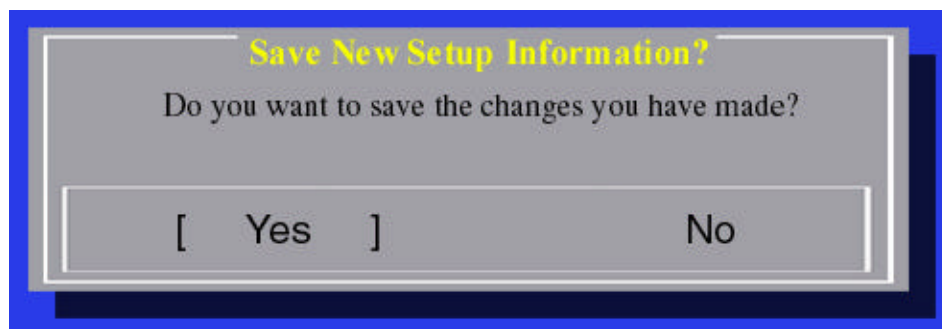


Figure 57: Save New Setup screen

2. Select "Yes" to save the changes or "No" discard changes.

APPENDIX A

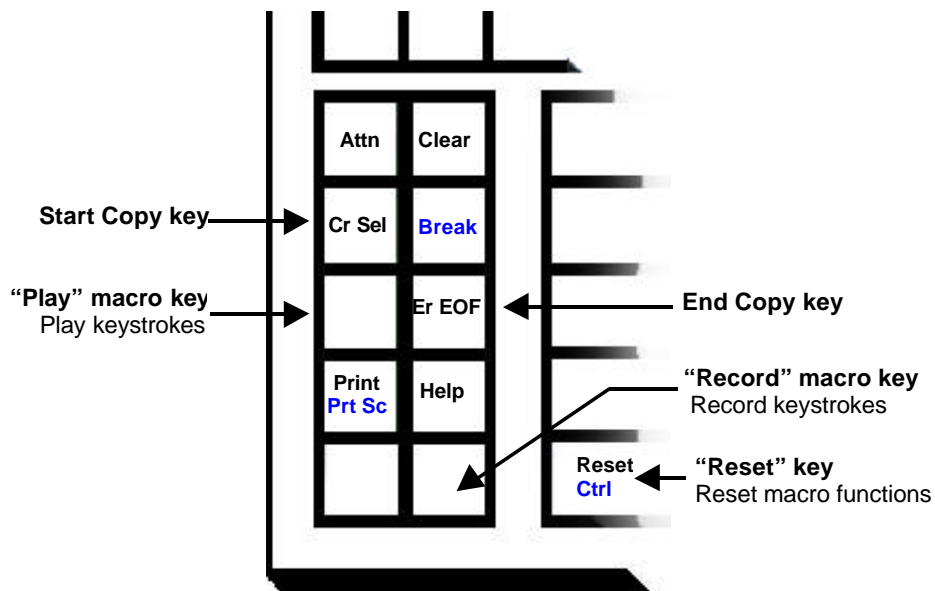
Keyboard Navigation

Identifying your keyboard

Because of its ability to connect to a variety of hosts, your OmniTerm/750t will come with one of several possible keyboards. To identify the keyboard that you are using, refer to the following diagrams.

OmniTerm/750t 122-key Universal Keyboard

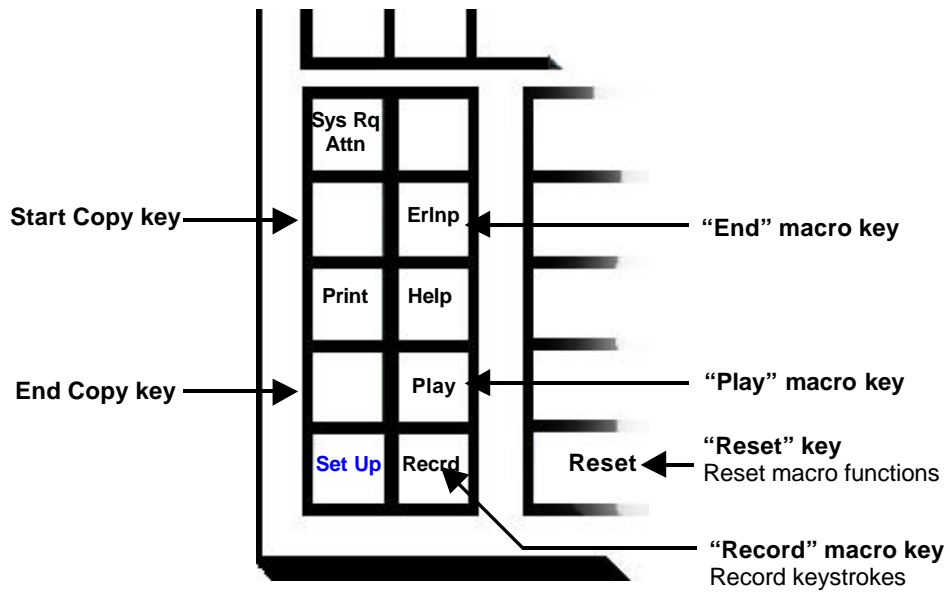
The OmniTerm/750t Universal keyboard can be identified by the red PF4 key in the upper right corner of the keyboard.



OmniTerm/750t "Universal" Keyboard

NLynx / DD U.S. 122-key 5250 Keyboard

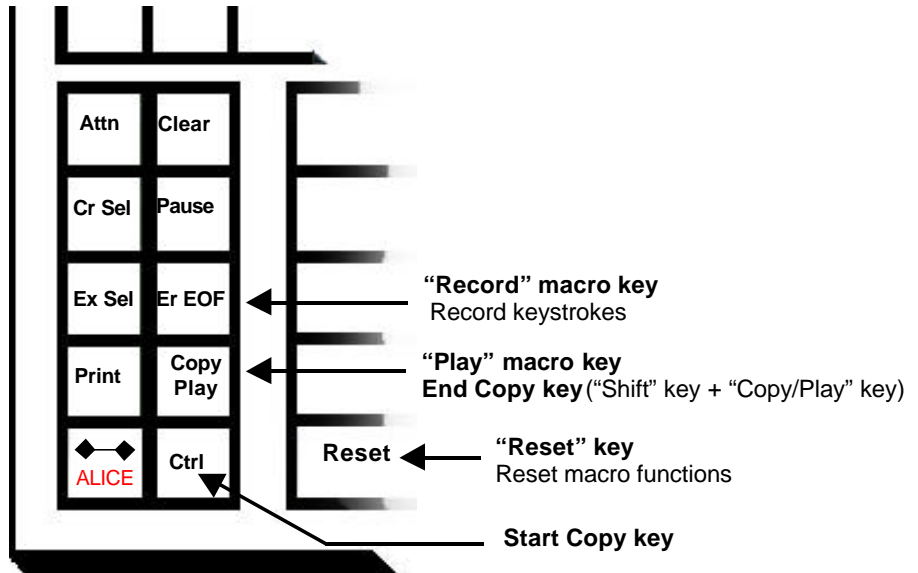
The OmniTerm/750t 5250 keyboard can be identified by the red "ALICE" key in the upper right hand corner of the keyboard.



NLynx / DD U.S. 122-key 5250 Keyboard

NLynx / DD U.S. 122-key 3270 keyboard

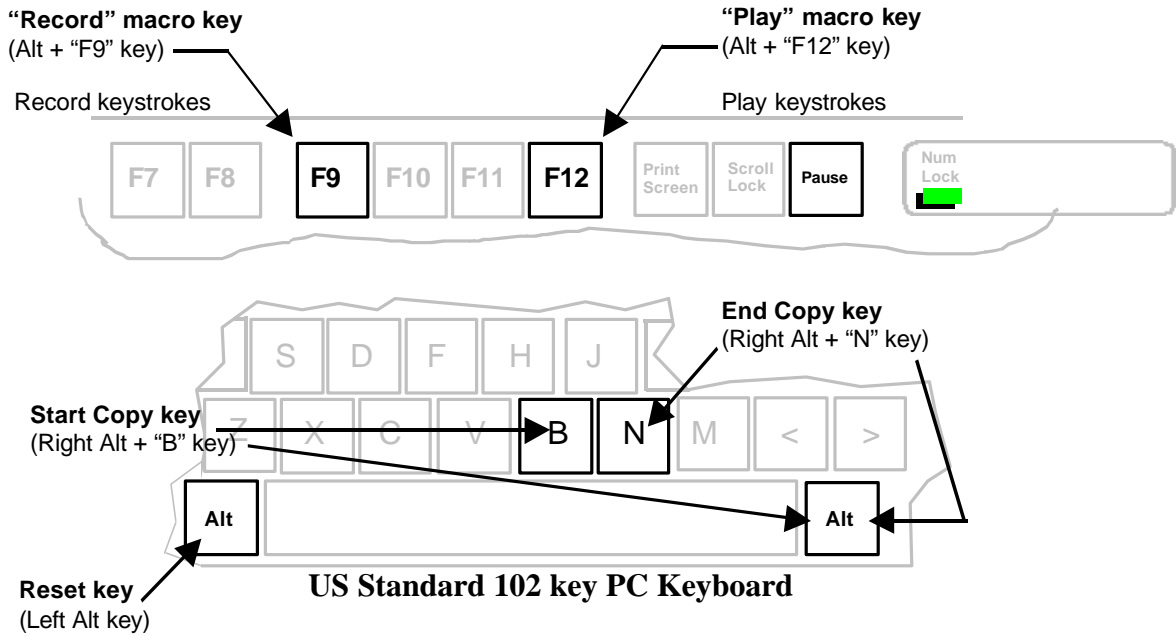
The OmniTerm/750t 3270 keyboard can be identified by the red "ALICE" key located directly below the "Print" key in the lower left corner of the keyboard.



NLynx / DD U.S. 122-key 3270 Keyboard

US Standard 102-key "PC" Keyboard

The US standard 102-key PC keyboard can be identified by the black "PAUSE" key in the upper right hand corner.



Using Special Keys

1. OmniTerm/750t advanced functions are enabled by special key sequences that vary slightly depending on the keyboard in use. After identifying your keyboard, use the table below as a guide.

Note: The “Rule” key is NOT supported on the OmniTerm/e.

Keyboard	Universal	DDUS5250	DDUS3270	PC-102
Online setup	Blank key in lower left hand corner (see diagram)	“Set Up” key in lower left hand corner	Red “ALICE” key in lower left hand corner.	(not available)
Session 1	ALT/PF1	ALT/PF1	ALT/PF1	ALT/PF1
Session 2	ALT/PF2	ALT/PF2	ALT/PF2	ALT/PF2
Session 3	ALT/PF3	ALT/PF3	ALT/PF3	ALT/PF3
Session 4	ALT/PF4	ALT/PF4	ALT/PF4	ALT/PF4
Email	ALT/PF5	ALT/PF5	ALT/PF5	ALT/PF5
Next session	Red PF4	Red “ALICE” key	Black “SPACE” key in upper right hand corner	Black “Pause” key in upper right hand corner
Disconnect session	ALT-Q from any session	ALT-Q from any session	ALT-Q from any session	ALT-Q from any session
Printer control	ALT-P from any printer session	ALT-P from any printer session	ALT-P from any printer session	ALT-P from any printer session
Record macro	(see diagram)	Recrd	Er EOF	Alt+F9
Print key (local printer)	PF6	PF6	PF6	PF6
Print key (system printer)	ALT/PF6	ALT/PF6	ALT/PF6	ALT/PF6
Play macro	(see diagram)	Play	Copy Play	Alt+F12
Reset macro	Reset	Reset	Reset	Left ALT
Start copy	Cr Sel	(see diagram)	Ctrl	Alt+B
End copy	Er EOF	(see diagram)	Copy Play	Alt+N

Note: If you accidentally press the “record” or “play” macro key, macro processing will begin and the macro symbol will appear at the bottom of the screen:

⏏ ??

To clear this function press the record or play key again followed by the reset key. If you accidentally press the “start copy” key, all subsequent entries will be displayed in reverse video. To clear this function, press the “end copy” key.

Using Print Keys

1. OmniTerm/750t printing functions are enabled by special key sequences that depending on the keyboard in use. After identifying your keyboard, use the table below as a guide.

Note: The following table outlines the OmniTerm/750t Printing keys:

Keyboard	Universal	DDUS5250	DDUS3270	PC-102
Print key (local printer)	PF6	PF6	PF6	PF6
Print key (system printer)	ALT/PF6	ALT/PF6	ALT/PF6	ALT/PF6

APPENDIX B

Record/Playback

Note: The Record/Playback command is only functional in an active host session.

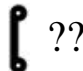


To Record keystrokes:

1. Press the “Record” key.

Note: The “Record” key will vary depending on which keyboard you are using with your OmniTerm/e. A recording symbol will appear at the bottom of the session screen (see below):



Figure 34: Record symbol

2. Choose a “PF” key for playing back recorded keystrokes. You can choose any function key (PF1 – PF24) to save your record/playback sequence. If you choose a function key that already has a macro assigned to it, then the OmniTerm/750t will give you an option to replace the current macro with a new one. To replace a macro, press the “PF” key a second time to start the recording sequence. For example, to replace the PF7 macro:
 - a. Press the “Record” key and the following symbol appears: 
 - b. Press PF7 and the following symbols appear: 
 - c. Press PF7 again and the following symbols appear: 

Note: “REPLACE?” will only appear if you have already saved a macro to this PF key.

At this point, everything you type will be recorded until you press the “Record” key to stop recording.

3. Begin typing.
4. Press the “Record” key to end the recording. The recording symbol will disappear.

To playback keystrokes:



1. Press the “Play” key again and the following symbols appear:
2. Press the function (PFx) key that you selected for the keystrokes you wish to playback.

Adding a Pause in a playback:

A “pause” in a playback will allow you to enter data in the middle of a playback sequence. The following sign-on sequence is an example of how a pause could be used within a user sign-on macro:

Manual sign-on:

1. Enter the User ID and press the “Field Exit” key.
2. Enter the User Password and press Enter.
3. Navigate to the screen you want to use.

This entire sequence could be automated (including the password), but that would defeat the host security system. You can still automate the user sign-on (except for the password entry) by utilizing the “Pause” command.

To automate the user sign-on with a pause (using the PF1 key):

1. Go to the host sign-on screen.
2. Press the “Record” key and the following symbol appears:
3. Press the PF1 key and the following symbols appear:
4. Enter the User ID and press the “Field Exit” key
5. Press the “Pause” key.

⌈ ??

⌈ 01

⌈ 01 ⌋

Note: Once the “Pause” symbol appears, the recording process stops until the “Pause” key is pressed.

6. Enter your password.
7. Press the “Pause” key and the following symbol appears:

⌈ 01

Note: When the “Pause” symbol disappears you can begin to record keystrokes again.

8. Press the Enter key (the host Main Menu appears).
9. Navigate to the screen you want to use.
10. Press the "Record" key and the following symbol disappears:

[01

Note: Recording stops when the "Record" symbol disappears.

To Playback this sample macro:

1. Go to the host Main Menu.
2. Press the "Play" key and the following symbol appears:
3. Press the "PF1" key.
 - User ID will be entered for you
 - Cursor position will be in the "Password" field
 - "Pause" symbol will appear so you may enter keystroke data
4. Enter your password.
5. Press the "Play" key and the rest of your Playback sequence will run.

[??

APPENDIX C

ASCII/EBCDIC Translation Table

This table is designed for translation from EBCDIC to internal ASCII. EBCDIC (Extended Binary-Coded Decimal Interchange Code) is the primary code set used in IBM systems. The EBCDIC to ASCII Translation tables are shown in the following figures.

SCS (SNA LU1) EBCDIC to ASCII (Printable Character)

		MSB															
		0	1	2	3	4	5	6	7	8	9	A	B	C	D	E	F
LSB	0	NUL	-	-	-	Sp	&	-	ø	Ø	°	μ	^	{	}	\	0
	1	-	-	-	-		é	/	É	a	j	~	£	A	J		1
	2	-	-	-	-	â	ê	Â	Ê	b	k	s	¥	B	K	S	2
	3	-	-	-	-	ä	ë	Ä	Ë	C	L	T	.	C	L	T	3
	4	-	-	-	-	à	è	À	È	d	m	u	f	D	M	U	4
	5	-	-	-	-	á	í	Á	Í	e	n	v	§	E	N	V	5
	6	-	-	-	-	ã	î	Ã	Î	f	o	w	¶	F	O	W	6
	7	-	-	-	-	â	ï	Ã	Ï	g	p	x	¼	G	P	X	7
	8	-	-	-	-	ç	ì	Ç	Ì	h	q	y	½	H	Q	Y	8
	9	-	-	-	-	ñ	β	Ñ	`	l	r	z	¾	I	R	Z	9
	A	-	-	-	-	¢	!	!	:	«	ª	l	[-	₁	₂	₃
	B	-	-	-	-	.	\$,	#	»	º	¿]	ô	ú	Ô	Û
	C	-	-	-	-	<	*	%	@	ð	æ	Ð	-	ö	ü	Ö	Ü
	D	-	-	-	-	()	_	'	ý	,	Ý	"	ò	ù	Ò	Ù
	E	-	-	-	-	+	;	>	=	þ	Æ	Þ	'	ó	ú	Ó	Ú
	F	-	-	-	-		¬	¿	"	±	¤	R	=	õ	ÿ	Õ	-

Figure C-1: EBCDIC to ASCII table

SCS (SNA LU1) EBCDIC to ASCII (Hex Character)

MSB

		0	1	2	3	4	5	6	7	8	9	A	B	C	D	E	F
LSB	0	00	2D	2D	2D	20	26	2D	B7	97	DE	C2	5E	7B	7D	5C	30
	1	2D	2D	2D	2D	E7	AA	2F	8A	61	6A	7E	D1	41	4A	E6	31
	2	2D	2D	2D	2D	A2	AB	82	8B	62	6B	73	D2	42	4B	53	32
	3	2D	2D	2D	2D	A4	AC	84	8C	63	6C	74	CA	43	4C	54	33
	4	2D	2D	2D	2D	A0	A9	80	89	64	6D	75	D5	44	4D	55	34
	5	2D	2D	2D	2D	A1	AE	81	8E	65	6E	76	C8	45	4E	56	35
	6	2D	2D	2D	2D	A3	AF	83	8F	66	6F	77	C9	46	4F	57	36
	7	2D	2D	2D	2D	A5	B0	85	90	67	70	78	E3	47	50	58	37
	8	2D	2D	2D	2D	A7	AD	87	8D	68	71	79	E4	48	51	59	38
	9	2D	2D	2D	2D	B1	C3	91	60	69	72	7A	E5	49	52	5A	39
	A	2D	2D	2D	2D	D0	21	7C	3A	CD	C0	C6	5B	E8	D7	D8	D9
	B	2D	2D	2D	2D	2E	24	2C	23	CE	C1	C7	5D	B4	BC	94	9C
	C	2D	2D	2D	2D	3C	2A	25	40	A8	A6	88	E0	B6	BD	96	9D
	D	2D	2D	2D	2D	28	29	5F	27	BE	DC	9E	DF	B2	BA	92	9A
	E	2D	2D	2D	2D	2B	3B	3E	3D	B8	86	98	DB	B3	BB	93	9B
	F	2D	2D	2D	2D	CB	CC	3F	22	CF	D4	E1	E2	B5	BF	95	E9

Figure C-2: EBCDIC to ASCII (Hex) table

For example, to translate “C1” in EBCDIC (which is an “A”), locate “C” on the MSB (horizontal row) and locate “1” on the LSB (vertical row) and “41” is the ASCII translation for “A”.

APPENDIX D

Email Usage

How to Use Email:

The OmniTerm/750t POP3 email will take a “snapshot” of the email on your mail server each time you sign on. For example, if you have 16 messages on your server (10 old messages and 6 new messages) you will see a list of all 16 and be able to work with all of these messages once you sign on. However, if you receive a new message (#17) while you are looking at the current messages, you will not see that the new message has arrived. This is a limitation of POP3 email and most POP3 servers will automatically force POP3 clients off after a set period of inactivity so that you must sign on again to see any new email.

Note: To get to the Email screen, you can press “ALT/PF5” **Note:** To get to the Email screen, you can press “ALT/PF5” (“Pause” key on a PC keyboard) until you get to the email start screen.

To start email (from the Email start screen):

1. Press the “Field Exit” key to run email.



Figure D-1:Email Enter screen

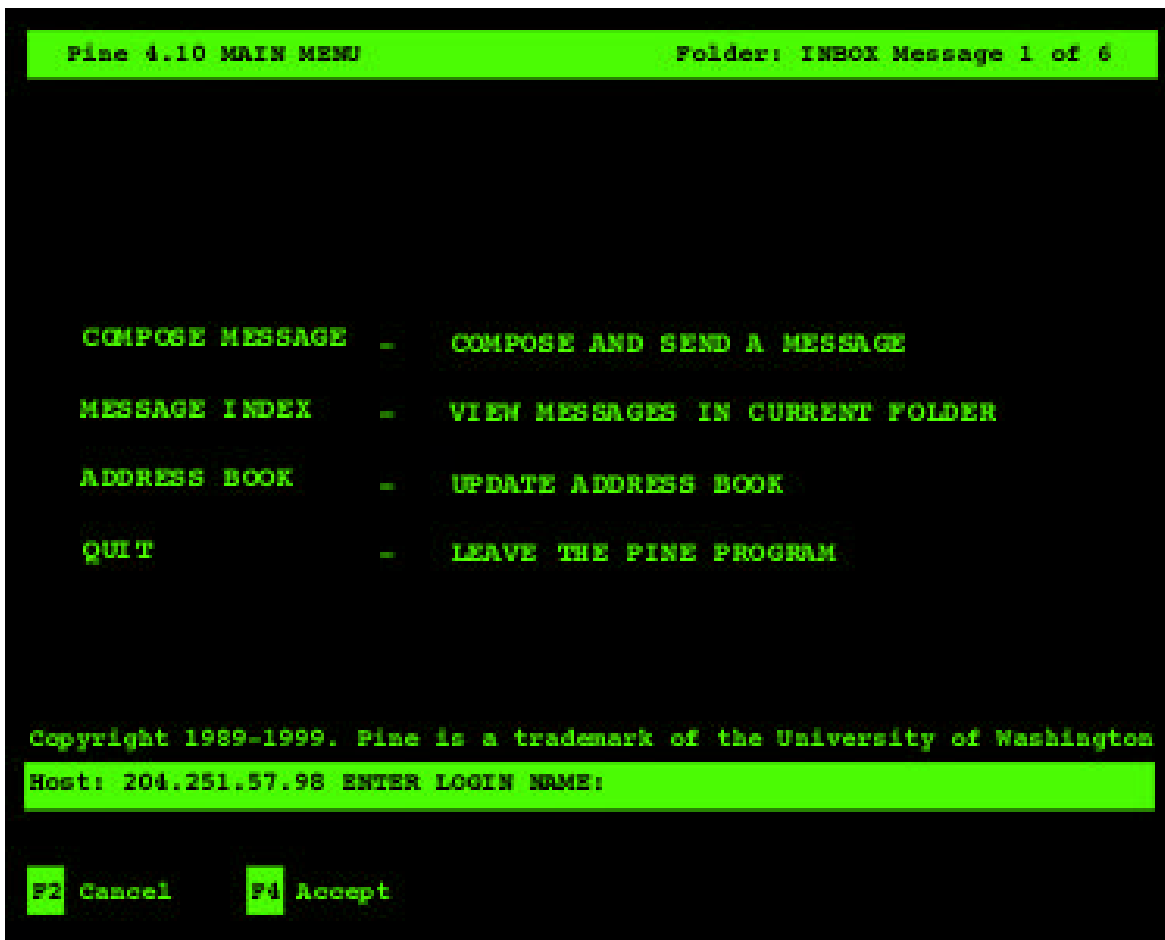


Figure D-2:Email Main Menu screen

2. Enter your login name.

Note: The DEFAULT User ID will be displayed on this screen. To use this ID, press the “Field Exit” key. To use a different User ID, type it in over the DEFAULT ID and press the “Field Exit” key.

3. The “Enter Password” screen appears.
4. Enter your password.
5. Press the “Field Exit” key.

The Main Menu:

From the Main Menu you can choose to write (compose) and send a message, look at an index of your mail messages, update your address book, or quit.

Note: In addition to the selections in the middle of the email screen many screens will have other functions available. These are listed on the bottom of each email screen.

```

Pine 4.10 MAIN MENU                               Folder: INBOX Message 1 of 6

COMPOSE MESSAGE - COMPOSE AND SEND A MESSAGE
MESSAGE INDEX  - VIEW MESSAGES IN CURRENT FOLDER
ADDRESS BOOK   - UPDATE ADDRESS BOOK
QUIT           - LEAVE THE PINE PROGRAM

Copyright 1989-1999. Pine is a trademark of the University of Washington
Host: 204.251.57.98

F1 Main Menu
F2 Cancel    F4 Accept

```

Figure D-3: Email Main Menu screen

Available Commands – Group 1:

- **F2 OTHER CMDS:** Show all other available commands (on some screens the “OTHER CMDS” option is available. Pressing the “OTHER CMDS” function key will bring up additional commands)
- **F3 Quit Pine:** Quit Pine
- **F4 INDEX:** Execute current MAIN MENU command
- **F5 PrevCmd:** Select previous command up on menu
- **F6 NextCmd:** Select next command down on menu
- **F9 RelNotes:** Display Release Notes
- **F10 KBLock:** Temporary locks your keyboard so your email cannot be used while you're away from your unit.

Available Commands – Group 2

Note: Group 2 commands appear after you select “F2” (OTHERCMDS).

- **F2 OTHERCMDS:** Show all other available commands
- **F4 COMPOSE:** Compose a message
- **F7 INDEX:** Message Index screen (displays a summary caption of each message in the INBOX)
- **F8 Journal:** Journal of status messages
- **F10 AddBk:** Address Book screen (allows you to update your personal address book)

```

Pine 4.10 MAIN MENU                               Folder: INBOX Message 1 of 6

COMPOSE MESSAGE - COMPOSE AND SEND A MESSAGE
MESSAGE INDEX  - VIEW MESSAGES IN CURRENT FOLDER
ADDRESS BOOK   - UPDATE ADDRESS BOOK
QUIT           - LEAVE THE PINE PROGRAM

Copyright 1989-1999. Pine is a trademark of the University of Washington
Host: 204.251.57.98

F1 Main Menu
F2 Cancel    F4 Accept

```

Figure D-4: Email Main Menu screen

Compose a Message (from the Main Email Menu)

To write a new email, select “Compose Message” option on the Main Menu (“Compose Message”). The “Compose Message” screen appears.

Available Commands:

- **F2 Cancel:** Cancel
- **F3 Send:** Send email
- **F4 DelChar:** Delete previous character(s)
- **F7 PrvPg/Top:** Move cursor to the top of the previous page
- **F8 NextPg/End:** Move the cursor to the end of the next page
- **F9 Cutline:** Delete all the text on the same line as cursor
- **F10 UnDel Lin:** Undelete all the text on the same line as cursor
- **F12 ToAddrBk:** Open Address Book

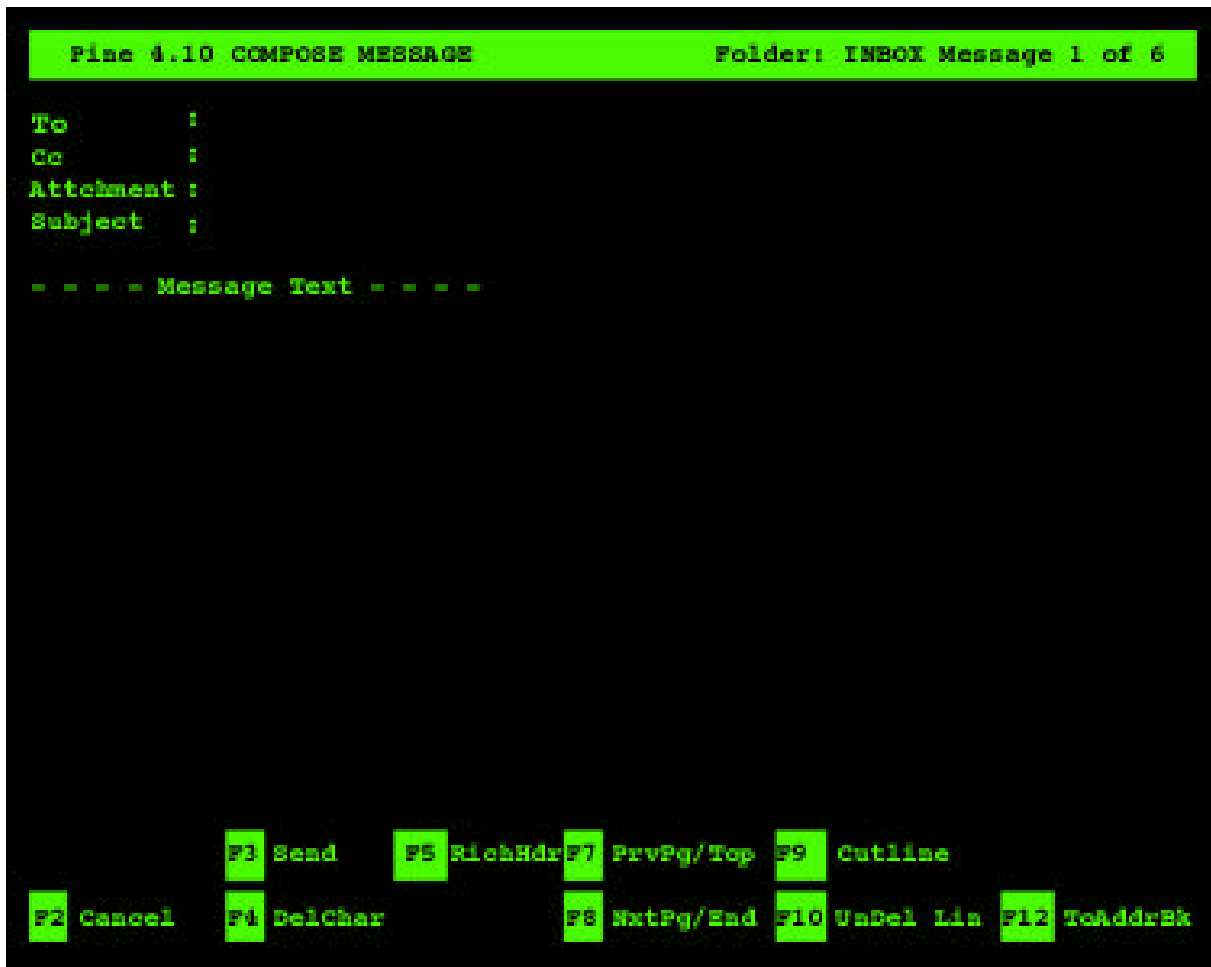


Figure D-5: Compose Email screen

Navigate within the compose screen

To move around, use the **arrow keys**; to correct typing errors, use the “**Backspace**” key.

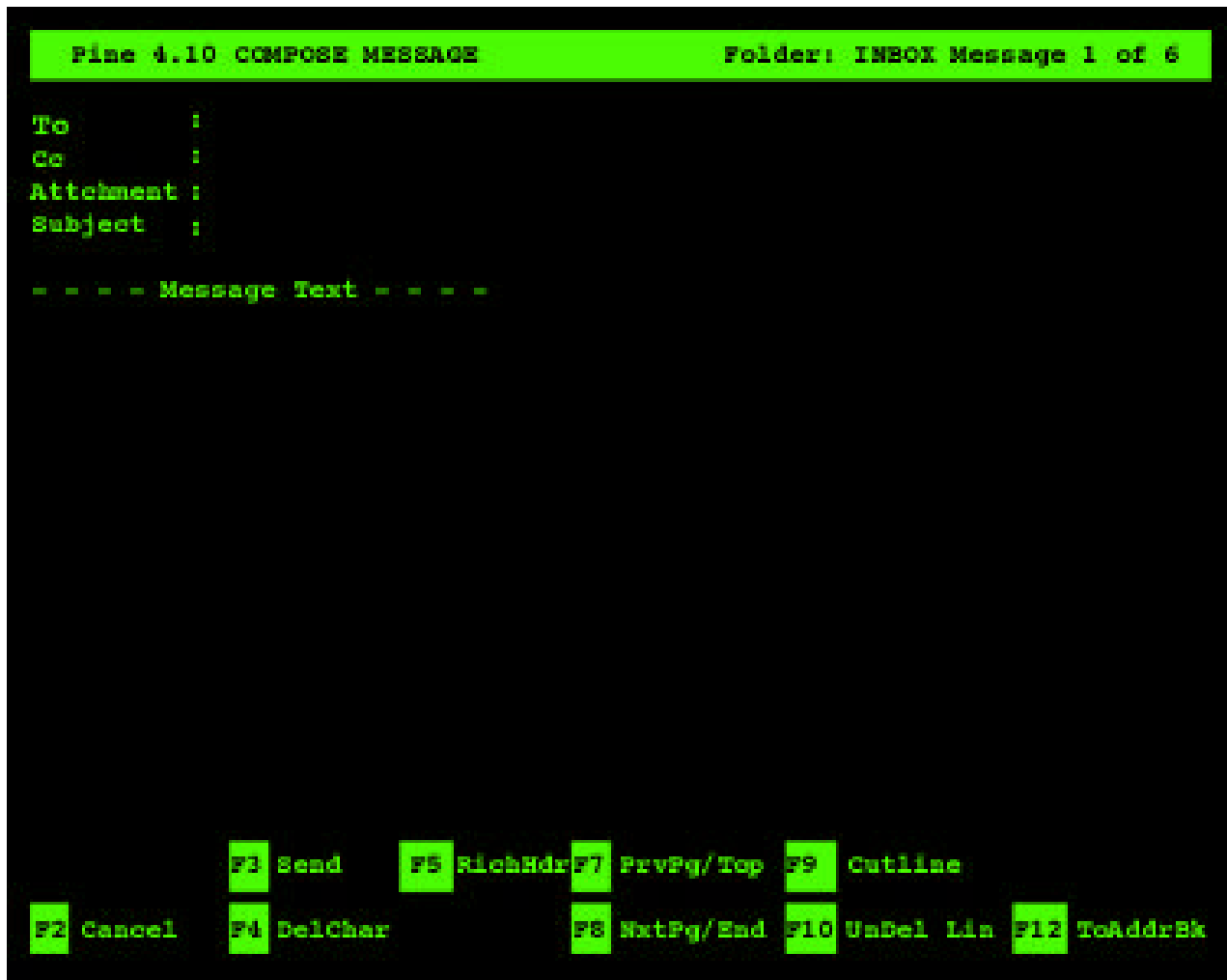


Figure D-6: Compose Email screen

Composing and sending a Test Message to Yourself

To write and send a test message to yourself:

1. Select the “Compose Message” option in the Main Menu.
2. In the “To” field, type your email address and press the “Field Exit” key.
3. In the Cc field, press the “Field Exit” key.
4. In the Subject field, type “**Test**” and press the “Field Exit” key.
5. Below the Message Text line, type “**This is a test**”.
6. To send your message, press the “**F3**” key (Send). You are asked: “Send message?”.
7. Press the “**F3**” key (yes), or press the “Field Exit” key to finish sending.

You have just sent a basic message. There are, of course, other options you can use as you compose a message. A few are summarized in the next section.

Hints for Composing a Message

To:

In this field, type the email addresses of your recipients. Separate multiple addresses with commas. When you are finished, press the "Field Exit" key.

Cc:

In this field, type the email addresses of the persons to whom you want to send copies. Separate their addresses with commas.

Subject:

In this field, enter a one-line description of your message. Recipients appreciate a short, pertinent description, since this is what they see when they scan their index of messages. When finished, press the "Field Exit" key.

Message Text:

Type your message. To move around, use the **arrow keys**. To delete a character, press **<Backspace>**. To delete a line, press the "F9" key (to immediately undelete a line, press the "F10" key).

Sending a Message

After your message is composed, press the "F3" key and then press the "F3" key or press the "Field Exit" key to confirm sending.

Listing Messages

To see a list of the email you have received in your INBOX:

At the “Main Menu” screen, select “Message Index”. All the emails in your “In Box” are listed.

```

Pine 4.10 MAIN MENU                               Folder: INBOX Message 1 of 6

COMPOSE MESSAGE - COMPOSE AND SEND A MESSAGE
MESSAGE INDEX  - VIEW MESSAGES IN CURRENT FOLDER
ADDRESS BOOK   - UPDATE ADDRESS BOOK
QUIT           - LEAVE THE PINE PROGRAM

Copyright 1989-1999. Pine is a trademark of the University of Washington
Host: 204.251.57.98

F1 Main Menu
F2 Cancel    F4 Accept

```

Figure D-7: Main Menu screen

Available Commands – Group 1:

- **F4 [ViewMsg]:** View current message
- **F6 NextMsg:** Open next message
- **F7 PrvPage:** Show previous screen of messages
- **F8 NxtPage:** Show next screen of messages
- **F9 Delete:** Mark message for deletion
- **F10 Undelete:** Remove deletion mark

Note: Messages marked for deletion will be deleted after you quit Pine.

- **F11 Reply:** Reply to original sender
- **F12 Forward:** Forward message to new recipient

Note: Replying (F11) and Forwarding (F12) are your two alternatives for following up on a message after you've read it. When Forwarding, you must supply an email address of the new recipient. In addition, when Replying, you may include (or not include) the original text from the message in your reply.

Available Commands – Group 2:

Note: Group 2 commands appear after you select “**F2**” (**OTHERCMDS**).

- **F2 OTHERCMDS:** Show all other available commands
- **F3 Main Menu:** Return to Main Menu
- **F4 Quit Pine:** Quit Pine
- **F5 Compose:** Compose a message
- **F6 NextNew:** Advance to next “unread” message

Note: The next “interesting” message is one that you have not yet deleted or have not read.

- **F8 WhereIs:** Search Address Book for a specific word
- **F9 Print:** Print message
- **F10 TakeAddr:** Extract email addresses from messages and save in your address book

Note: Once you have saved an address to your Address Book, you can assign a nickname to it to avoid typing long email addresses.

Available Commands – Group 3:

Note: Group 3 commands appear after you select “**F2**” (**OTHERCMDS**).

- **F2 OTHERCMDS:** Show all other available commands
- **F3 eXpunge:** Mark message for deletion
- **F7 SortIndex:** Sort Message Index
- **F8 Jump:** Jump to Message Index
- **F10 Bounce:** Allows you to re-send a message

Note: This command is used primarily to redirect email that has been sent to you in error.

```

Pine 4.10 MESSAGE INDEX                               Folder: INBOX Message 1 of 6

+ N 1 Sep 24      name@company.com      (986) Re: TEST
+ N 2 Sep 23      name@company.com      (509) Re: Lunch
+ N 3 Sep 20      name@company.com      (124) Re: document
+ N 4 Sep  8      name@company.com      (296) Re: Quick Install
+ N 5 Sep  8      name@company.com      (1076)Re: CD artwork
+ N 6 Sep  3      name@company.com      (69)  Re: Help File

F3 FldrList  F5 PrvMsg  F7 PrvPage  F9 DELETE  F11 Reply
F2 OTHERCMDS F4 [ViewMsg] F6 NextMsg  F8 NxtPage  F10 Undelete F12 Forward

```

Figure D-8:Message Index screen

About Your Message Index Screen

When a message is selected it is highlighted.

The first column on the left is blank, or shows a "+" if the message was sent directly to you (i.e., it is not a copy or from a list). The second column may be blank, or it may contain:

- "N" if the message is new (unread),
- "A" if you have answered the message (using the Reply command),
- "D" if you have marked the message for deletion.

Note: If you answer a message as well as mark it deleted (in either order), you only see the "D".

The rest of the columns in the message line show you the message number, date sent, sender, size, and subject. Most of the commands you need to handle your messages are visible at the bottom of the screen, and you can press the "F2" key (OTHER CMDS) to see additional commands that are available.

Viewing a Message

To view a message:

1. At the Message Index screen, use the **arrow keys** to highlight the email you want to view.
2. Press "**F4**" (Viewing) or press the "Field Exit" key to read a selected email.
3. To see the next message, press "**F6**" (NextMsg).
4. To see the previous message, press "**F5**" (PrevMsg).
5. To return from your message to the Message Index, press the "**F3**" key (Main Menu).

Replying to a Message

To reply to an email that you have selected at the Message Index screen or that you are viewing:

1. Press "**F11**" (Reply).

You are asked whether you want to include the original message in your reply. If the original message was sent to more than one person, you are asked if you want to reply to all recipients.

Forwarding a Message

To forward an email that you have selected at the Message Index screen or that you are viewing:

1. Press "**F12**" (Forward). A copy of the message opens and the To field is highlighted.
2. Enter the address of your recipient and send the message as usual. Note that you can modify the original message if you wish, for example, to forward only a portion of it or to add a message or notes of your own.
3. Press the "**F3**" key to send.

Deleting a Message

There are two steps to deleting a message: marking it for deletion and then expunging it. To mark a message for deletion:

1. At the Message Index screen, select (highlight) the message you want to mark for deletion, or simply view the message.
2. Press the "**F9**" key (Delete).

Note: If you are looking at the Message Index screen when you mark a message for deletion, a "D" appears in the left column of the message line and the next message, if there is one, is selected. If you are looking at the Message Text screen when you mark a message for deletion, a "DEL" briefly appears in the upper right corner of your screen, you get an on-screen message that the message has been deleted, and the next message, if there is one, appears.

3. Repeat this process to mark additional messages for deletion.

Undeleting a Message (before Expunging)

If you change your mind about a message you have marked for deletion, select it and then press the “**F10**” key (Undelete) command to remove the deletion mark any time before you expunge a message. Remember: After you expunge a message, cannot get it back.

Expunging a Message

Emails that are marked for deletion remain available until you expunge them. You can expunge a message that is marked for deletion at any time, or you can wait until you quit . Once you have a few messages marked for deletion, you may want to expunge them before you continue to work, because it is easier to look through an index that contains fewer messages. To expunge a message:

Note: Remember, once you expunge a message, it is gone. You cannot get it back.

1. Press “**F9**” to mark the message in your Address Book for deletion.

Note: A message “[Message # marked for deletion]” appears at the bottom of the screen.

2. Press “**F2**” (OTHER CMDS).
3. Press “**F2**” (OTHER CMDS) again.
4. At the Message Index screen, press the “**F3**” key (eXpunge). You are asked:
Expunge # message(s) from "foldername"?
5. Press “**F1**” (yes), “**F2**” (no), or Press the “Field Exit” key. Emails marked for deletion will disappear.

Using the Address Book

You can build a list of your regular email correspondents in your address book. At the Main Menu, select "Address Book". You can use the address book to store email addresses for individuals or groups, to create easily remembered "nicknames" for these addresses, and to quickly retrieve an email address when you are composing a message.



Figure D-9:Address Book screen

Available Commands – Group 1:

- **F2 OTHERCMDS:** See commands in next group
- **F3 MainMenu:** Exit this screen
- **F4 View/Update:** View/Edit selected entry
- **F5 PrevEntry:** Move to previous entry
- **F6 NextEntry:** Move to next entry
- **F7 PrePage:** Previous page of Address Book
- **F8 NextPage:** Next page of Address Book
- **F9 AddNew:** Add new entry to Address Book
- **F10 Delete:** Delete selected entry
- **F11 ComposeTo:** Compose to selected entry

- **F12 WhereIs:** Search Address Book

Available Commands – Group 2

Note: Group 2 commands appear after you select “F2” (OTHERCMDS).

- **F2 OTHERCMDS:** Show all other available commands
- **F3 Quit Pine:** Quit Pine Email
- **F7 Index:** Go to Message Index screen
- **F9 Print:** Print message
- **F11 Forward:** Forward message

There are two ways to add addresses to your address book: you can add them manually or take them from messages. With either method, you specify nicknames for your correspondents. A single address book entry (or nickname) can point to just one email address, or, it can point to more than one. When it points to more than one, it is called a distribution list. Each distribution list has a nickname, a full name, and a list of addresses. These addresses may be actual addresses, other nicknames in your address book, or other distribution lists.

Adding Single Addresses Manually

To add single addresses or distribution lists manually:

1. At the Main Menu, select “Address Book”.
2. Press “F9” (AddNew) and follow the instructions.

Note: *Nickname:* This is a short nickname for this address book entry. If it is used in the place of an address from the composer, the composer will fill in the address(es) for the entry that matches the nickname. *Fullname:* This is the full name field for this entry. If this is going to be a distribution list (more than one address), it should be a descriptive phrase describing the list. If this address book entry is going to be a simple entry with just one address, then this field is the person's name.

Taking Multiple Addresses to Build a Distribution List

Note: You can extract multiple email addresses from an incoming message and save them in your address book. If the message is addressed to you individually, then you may assign a nickname to the sender's address to avoid re-typing or remembering the entire address. If the message contains more than one address, then you will see an Address Selection Screen which lets you choose the address you want to save into your address book.

To take multiple addresses from a message you are viewing or have selected in the index:

1. Press “F12” (AddrBook).
2. Press “F10” (ListMode).
3. For each address you want to take, use “F5” (PrevEntry), “F6” (NextEntry), or the up and down arrow keys to select it, and then press “F10” (Set/Unset) in the box to its left.

4. Press "**F4**" (Select).
5. Follow the instructions.

Changing a Single Address or a Distribution List

To change a single address or a distribution list:

1. At the Main Menu, press "**F4**" (AddrBook) and then Press the "Field Exit" key. You see your personal Address Book screen.
2. Use the **arrow keys** to select the single address or distribution list you want to change.
3. Press "**F4**" (View/Update).
4. Press "**F4**" (Update), then use arrow keys to get to the field where you want to make a change (Type "**F1**" if you need help).
5. Change any of the fields.

Note: Additional comma-separated addresses may be entered in the address field.

Using Address Book Entries When Composing Email

When composing a message, at the "To" or the "Cc" (Carbon Copy) fields you can enter an email address in any of the following ways:

- Type the entire email address.
- Type a nickname you have set up in the address book.

Or...

1. Place your cursor in the To or Cc field and then type "**F12**" (To AddrBk).
2. Use the **arrow keys** to highlight the name you want.
3. Press "**F4**" (Select) or Press the "Field Exit" key.

To send a message to several people using you address book:

- Place your cursor in the To or Cc field and then type "**F12**" (To AddrBk).
- Type "**F10**" (List Mode).
- Using the "**F10**" key, select each name you want.
- Press the "Field Exit" key.

Printing Messages

Before you print from your email session, you must attach a PC-type printer to your parallel port and configure it in the off-line configuration. Please see Setup Configuration section.

You can print a message using the following method:

1. From either the Message Index screen or the Message Text screen, press "**F9**" (Print).
2. You are asked to confirm your choice.
3. Follow the instructions.

Logging Out

To quit:

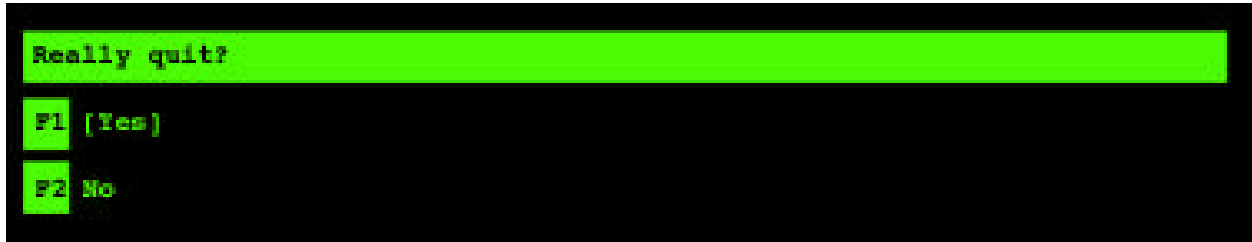


Figure D-10: Email logout screen

1. Select the “Quit” option in the “Main Menu” screen. Press the “**F4**” key (Accept) or press the “Field Exit” key. You are asked: Really quit Pine?
2. Press the “**F1**” key (yes), or press the “Field Exit” key to quit.

APPENDIX E

Using TFTP from the AS/400

Note: The AS/400 must support TFTP. To create the following configuration you must have Security Officer authority on the AS/400.

A. Using ES/TCP

1. On a PC running ES/TCP, sign on as a Security Officer.
2. On a command line type: CRTDIR DIR('OMNITERM') and press ENTER.
3. On a command line type: CHGTFTP ALTSRCDIR('/OMNITERM') and press ENTER.

B. Using CA/400

1. On a command line type: CHGTFTP ALTSRCDIR('/OMNITERM') and press ENTER.

C. Working with the AS/400 TFTP Server

Note: This step will stop and then start all TFTP activity. Make sure that no other applications are using TFTP before starting this step.

1. If the TFTP server is running you must end it and then restart it. On a command line type: ENDTCP SVR *TFTP and press ENTER.
2. To start or restart the TFTP server. On a command line type: STRTCPSVR *TFTP and press ENTER.

D. Download “omnidist” to your PC

The OmniTerm/750t upgrade files are available in two different formats. OmniTerm/750t units that are upgraded directly off of the N Lynx Technologies website use the multi-file format. This format is composed of a sub-directory (for example “omniterm.3.1”) which contains several files, including “boot1”, “boot2”, etc. This multi-file format is also used if you are upgrading your OmniTerm/750t from a local FTP server. Upgrades to the OmniTerm/750t from an AS/400 (TFTP) server use a single format “omnidist” file.

To download an “omnidist” file to your PC, prior to moving to your AS/400:

1. Connect to the N Lynx Technologies FTP server at the following location:

[FTP://204.251.47.68/pub/Terminals/Omniterm](ftp://204.251.47.68/pub/Terminals/Omniterm)

2. Locate the download version you want to download to your PC. For example, the “omnidist” file for version 3.1 would be at the following location:

<FTP://204.251.47.68/pub/Terminals/Omniterm/omniterm.3.1>

3. Download the “omnidist” file to your PC.

Note: This file must be downloaded as a binary with no conversion.

E. Transfer the “OMNIDIST” folder to the AS/400

1. With the AS/400 on your desktop, double click on the AS/400. This will open the AS/400 directory.
2. Locate the “OMNITERM” folder.
3. Drag the file “OMNIDIST” into the OMNITERM folder.
4. In the SEND HOST DATE window, select PC FORMAT = NO CONVERSION and HOST DATA SPECIFICATION to USE SPECIFICATION IN EXISTING HOST DATA (HOST DATA MUST REFERENCE AN OBJECT THAT EXIST).
5. Click on TRANSFER to move the field.

Note: Steps “A” through “C” only need to be done the first time that you upgrade. Future upgrades only require you to run steps “D” through “F”.

F. Downloading the Upgrade to the Omniterm/e

1. In the Setup of OmniTerm/e, select UPGRADE and press return.
2. In the Enter the URL of the OmniTerm/750t Firmware, type in “TFTP://xxx.xxx.xxx.xxx/Omniterm/omnidist” and Press the Field Exit key. (xxx.xxx.xxx.xxx is the IP address of your AS/400).
3. Follow the screen options.

APPENDIX F

Troubleshooting

The OmniTerm/750t unit will display up to four host session, plus an email session. Navigation from session to session is covered in APPENDIX A of this guide.

In addition to these sessions the OmniTerm/750t has three other session windows. These will help you see how the unit is configured and assist you in troubleshooting problems.

The System Information Screen

Session number 6 is the System Information Screen. You can access this screen using the ALT/PF6 key sequence. On this screen you will see the OmniTerm/750t software version, the IP configuration information and the MAC address of the unit. Note that the MAC address is also on a label on the outside of each shipping container and on a label on the back or side of the OmniTerm/750t logic base.

The System Log Screen

As the OmniTerm/750t connects to the network and then to the hosts that have been configured a rolling log is kept. To access this screen:

1. Go to the System Information Screen (Right ALT/PF6).
2. Press the "ESC" key (a ">" will appear on the lower left of the OmniTerm/750t screen).

Note: The "ESC" key applies to a PC keyboard only. The following details outline other keyboards:

- **DD Coax US keyboard:** Press the BLANK key directly above the "7" key on the keypad.
 - **DD TWX_US keyboard:** Press the BLANK key directly above the "7" key on the keypad.
 - **IBM 5250 keyboard:** RED PF1 key directly above the "7" key on the keypad.
3. Enter "log" and hit the Field Exit key.

This sequence will bring you to the log screen, which may assist you in seeing what has or has not happened during the connection process. To exit this screen uses the ALT/PF_x sequence to go to any of the 5 host sessions.

The System Command Line Screen

The command line screen will let you "PING" other IP devices on the network. PING is a valuable low-level command that can be used to verify that the OmniTerm/750t is on the network and that it has logical IP access to the hosts and email services that you want to use. For example, if you cannot get a sign on screen to an AS/400 and all of the configuration information appears correct then you can "PING" that AS/400 to see if it will respond to you. If a PING does

not work then that indicates an IP connection problem, at which time you can use PING to step through the network to see where the problem exists.

A possible sequence is:

1. Can you PING any device on your local network? If not, then check the cable, hub and/or IP address you are using.
2. If you can get to the network but not to a specific host, then ping something between the OmniTerm/750t and the host (a router). And then gradually PING your way to the host to see where it is broken.

To access this screen:

1. Go to the System Information Screen (ALT/PF6).
2. Press the ESC key (a ">" will appear on the lower left of the OmniTerm/750t screen).

Note: The "ESC" key applies to a PC keyboard only. The following details outline other keyboards:

- **NLynx/DD Coax US keyboard:** Press the BLANK key directly above the "7" key on the keypad.
 - **NLynx/DD TWX_US keyboard:** Press the BLANK key directly above the "7" key on the keypad.
 - **IBM 5250 keyboard:** RED PF1 key directly above the "7" key on the keypad.
3. Enter "cmd" and hit the Field Exit key.
 4. Enter ping (enter the IP address of the device you want to query "ping" in this format).

Note: IP address format: ping XXX.XXX.XXX.XXX

To exit this screen, use the ALT/PF_x sequence to go to any of the 5 host sessions.

Contact Information

Sales & Technical Support

Sales Offices

NLynx - United States/Latin and South America/Asia

8313 Hwy 71 West
Austin, TX 78735
Tel: 1-800-328-2696
or 1-512-301-8000
FAX: 1-512-301-8195

***NLynx - Northern Europe/
United Kingdom***

4th Floor, The Graftons
Stamford New Road
Altrincham, Cheshire
Great Britain WA14 1DQ
Tel: +44 161 928 7014
FAX: +44 161 928 7015

NLynx - Southern Europe/Middle East/ Africa

Tour "Le Ventose"
6, Boulevard Henri Sellier
92150 Suresnes, FRANCE
Tel : +33 (0) 1 44 91 00
FAX : +33 (0) 1 41 44 91 01

Technical Support

NLynx - United States/Latin and South America/Asia

Toll free: (888)-659-6967
Tel: (512)-301-8180

NLynx - Northern Europe/United Kingdom

Tel: +44 161 928 7014
FAX: +44 161 928 7015

NLynx - Southern Europe/Middle East/ Africa

Tel : +33 (0) 1 44 91 00
FAX : +33 (0) 1 44 91 01

<http://www.nlynx.com/>