

**UNIVERSAL
PROM PROGRAMMER**

Order Number: 9800159A

**schematic
drawings**

intel[®]

**UNIVERSAL
PROM PROGRAMMER**

Order Number: 9800159A

PROM PROGRAMMER
REFERENCE SCHEMATIC DRAWINGS

TABLE OF CONTENTS

- SECTION 1 - MODULES
- SECTION 2 - HARNESS & CABLE ASSEMBLIES
- SECTION 3 - MAJOR ASSEMBLIES
- SECTION 4 - SYSTEM POWER

SECTION 1

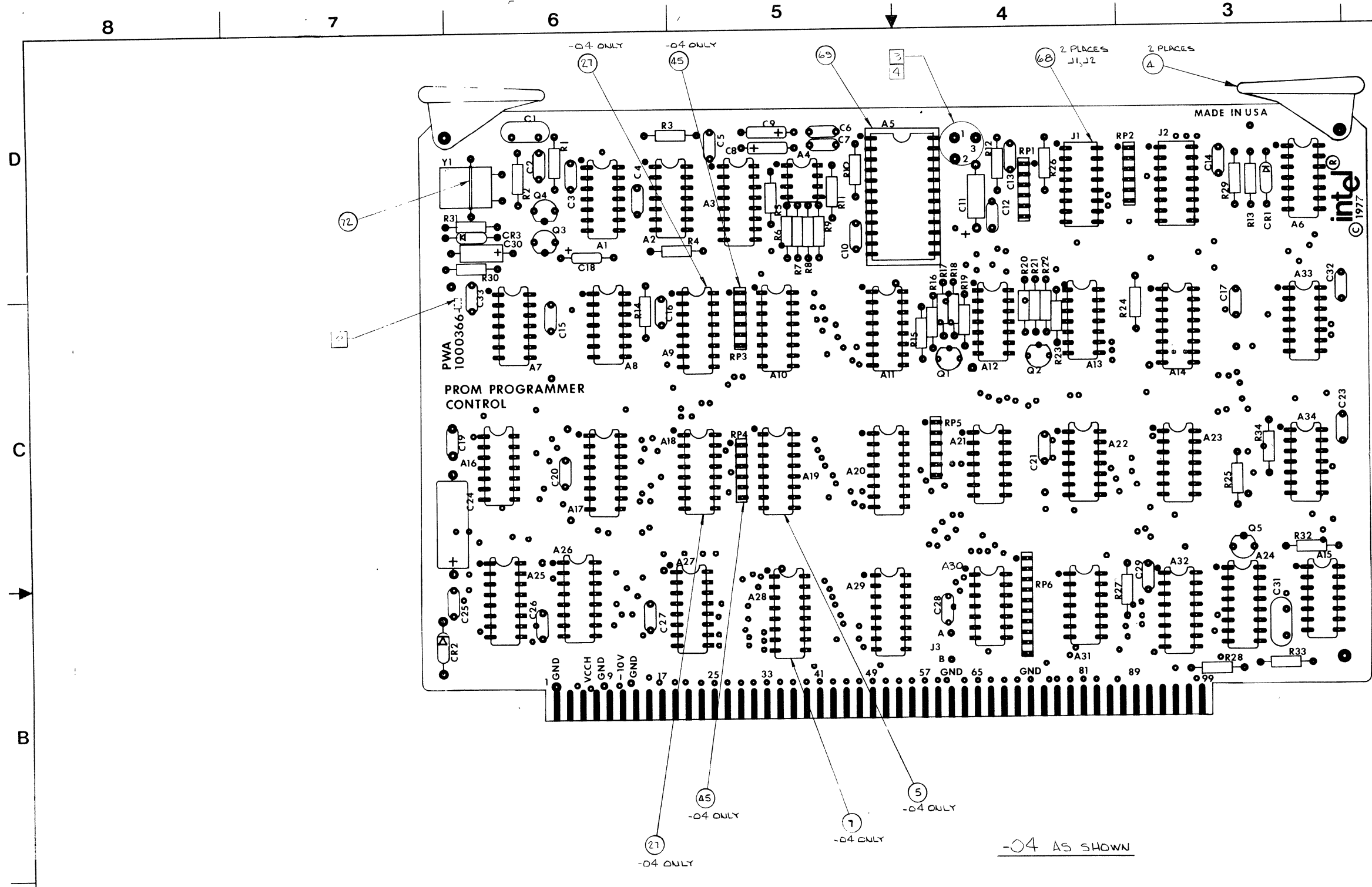
MODULES

1000366 } - PROM PROGRAMMER CONTROL
2000368 }

1000419 - 16/24 SOCKET

1000421 } - MOTHERBOARD
2000423 }

1000424 - 24/24 SOCKET



REV	DESCRIPTION	DATE	BY	CHKD
A	ENG'G RELEASE	7-28-75	J. H.
B	PROD REL	8-1-76
C	SEE ECO# 01055-1	8-17-77
D	SEE ECO# 01215	9-20-77

NOTE: UNLESS OTHERWISE SPECIFIED
 1. ASSEMBLY NO. IS 1000366-XX
 2. MARK DASH NO. IN POSITION SHOWN
 3. PIN 1 & 3 USED FOR TEST ONLY
 4. PIN 1 & 2 USED FOR NORMAL OPERATION.

4000845	MDS-UPP-102/51	2:1	DATE: 10/4/75	3065 BOWERS AVE SANTA CLARA CALIF 95051 PRINTED WIRING ASSEMBLY PROM PROGRAMMER CONTROL MCD 1000366
4000845	MDS-UPP-101/51		DATE: 11/1/75	
4000369	MDS-UPP-102		DATE: 7/75	
4000369	MDS-UPP-101		DATE: 7/28/75	
2:1 4000845 MDS-UPP-102/51 4000845 MDS-UPP-101/51 4000369 MDS-UPP-102 4000369 MDS-UPP-101			AUTH BY: <i>[Signature]</i> DATE: 7/28/75	D MCD 1000366

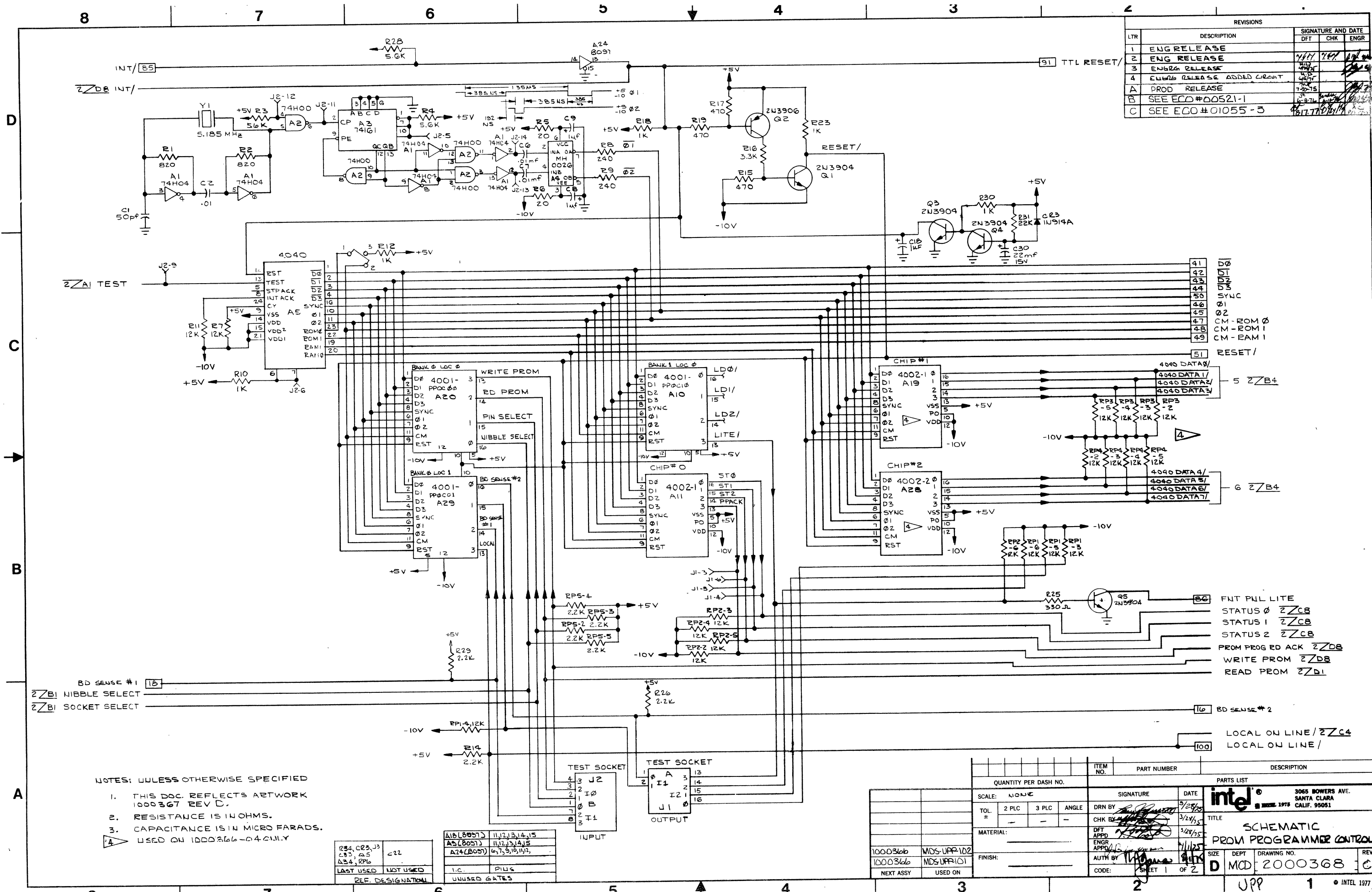
A

A

8 7 6 5 4 3 2 1

REVISIONS

LTR	DESCRIPTION	SIGNATURE AND DATE		
		DFT	CHK	ENGR
1	ENG RELEASE			
2	ENG RELEASE			
3	ENGRS RELEASE			
4	ENGRS RELEASE ADDED CIRCUIT			
A	PROD RELEASE			
B	SEE ECO #00521-1			
C	SEE ECO #01055-3			



- 41 D0
- 42 D1
- 43 D2
- 44 D3
- 45 SYNC
- 46 01
- 47 CM-ROM 0
- 48 CM-ROM 1
- 49 CM-RAM 1
- 51 RESET/

- 5 Z/B4
- 6 Z/B4

- 86 FMT PUL LITE
- STATUS 0 Z/C8
- STATUS 1 Z/C8
- STATUS 2 Z/C8
- PROM PROG RD ACK Z/D8
- WRITE PROM Z/D8
- READ PROM Z/D1

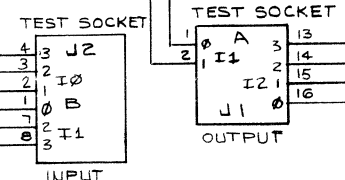
- 100 LOCAL ON LINE / Z/C4
- 100 LOCAL ON LINE /

NOTES: UNLESS OTHERWISE SPECIFIED

1. THIS DOC. REFLECTS ARTWORK 1000367 REV D.
 2. RESISTANCE IS IN OHMS.
 3. CAPACITANCE IS IN MICRO FARADS.
- ▲ USED ON 1000366-04 ONLY

REF. DESIGNATION	QTY	DESCRIPTION
C22	22	
C23, C25	2	
C34, R26	2	

REF. DESIGNATION	QTY	DESCRIPTION
A16 (B007)	11, 12, 13, 14, 15	
A5 (B007)	11, 12, 13, 14, 15	
A24 (B007)	6, 7, 9, 10, 11, 12	



QUANTITY PER DASH NO.		PARTS LIST	
SCALE:	NONE	SIGNATURE	DATE
TOL:	2 PLC 3 PLC ANGLE	DRN BY	3/24/75
MATERIAL:		CHK BY	3/24/75
FINISH:		DFT APPD	3/24/75
		ENGR APPD	3/24/75
		AUTH BY	3/24/75
		CODE:	SHEET 1 OF 2

3065 BOWERS AVE.
SANTA CLARA
CALIF. 95051

INTEL

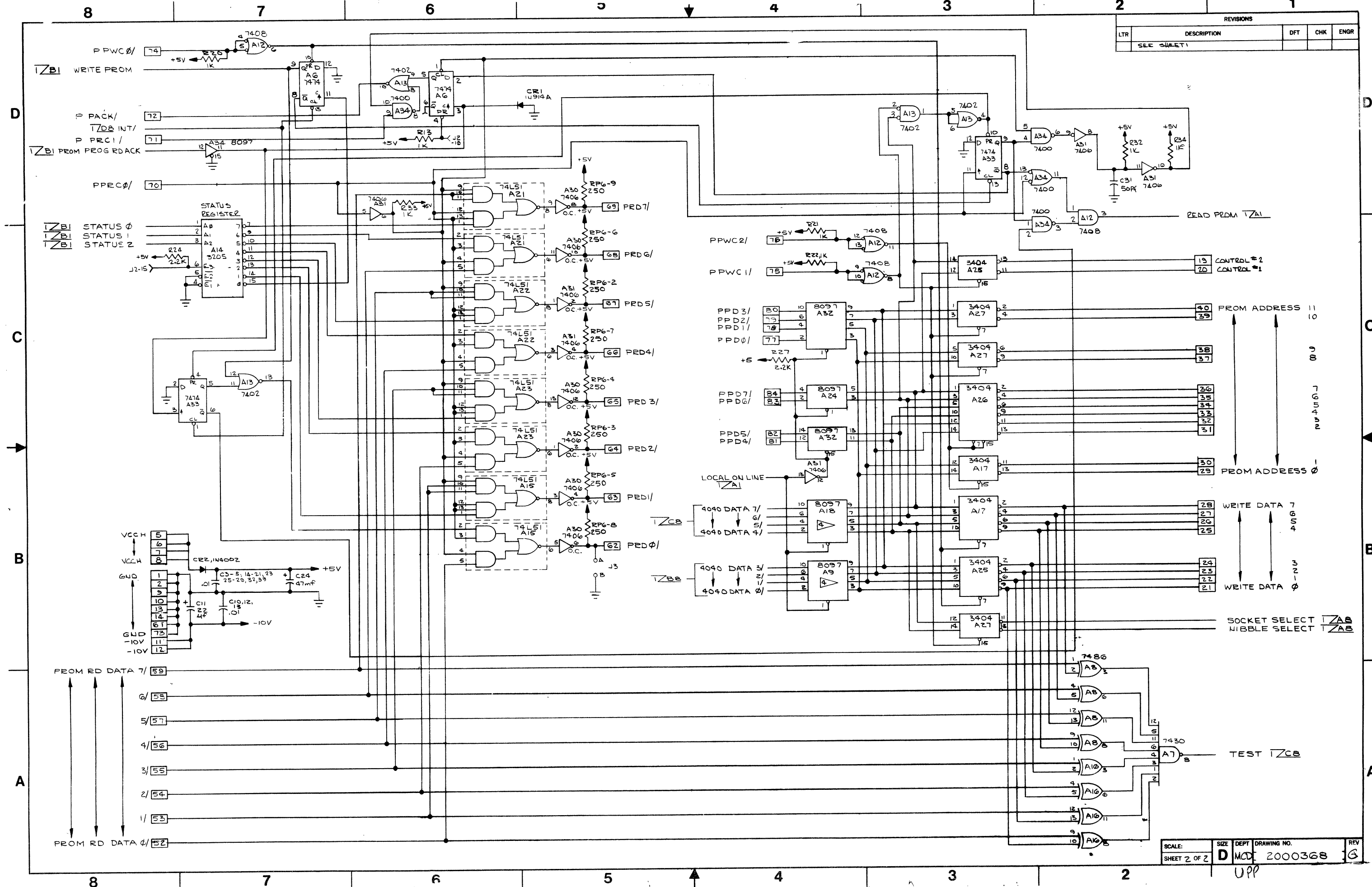
TITLE: **PROM PROGRAMMER CONTROL**

DEPT: **MCD** DRAWING NO.: **2000368** REV: **C**

Upp 1 INTEL 1977

REVISIONS

LTR	DESCRIPTION	DFT	CHK	ENGR
	SEE SHEET 1			



FROM ADDRESS 11
 FROM ADDRESS 10
 FROM ADDRESS 9
 FROM ADDRESS 8
 FROM ADDRESS 7
 FROM ADDRESS 6
 FROM ADDRESS 5
 FROM ADDRESS 4
 FROM ADDRESS 3
 FROM ADDRESS 2
 FROM ADDRESS 1
 FROM ADDRESS 0

WRITE DATA 7
 WRITE DATA 6
 WRITE DATA 5
 WRITE DATA 4
 WRITE DATA 3
 WRITE DATA 2
 WRITE DATA 1
 WRITE DATA 0

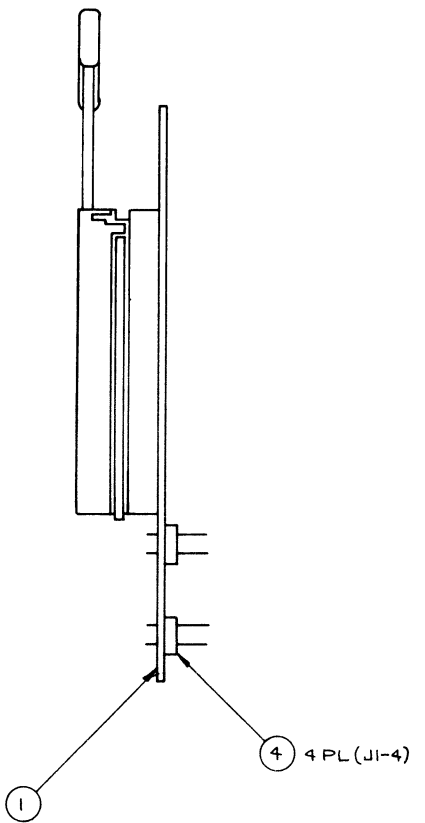
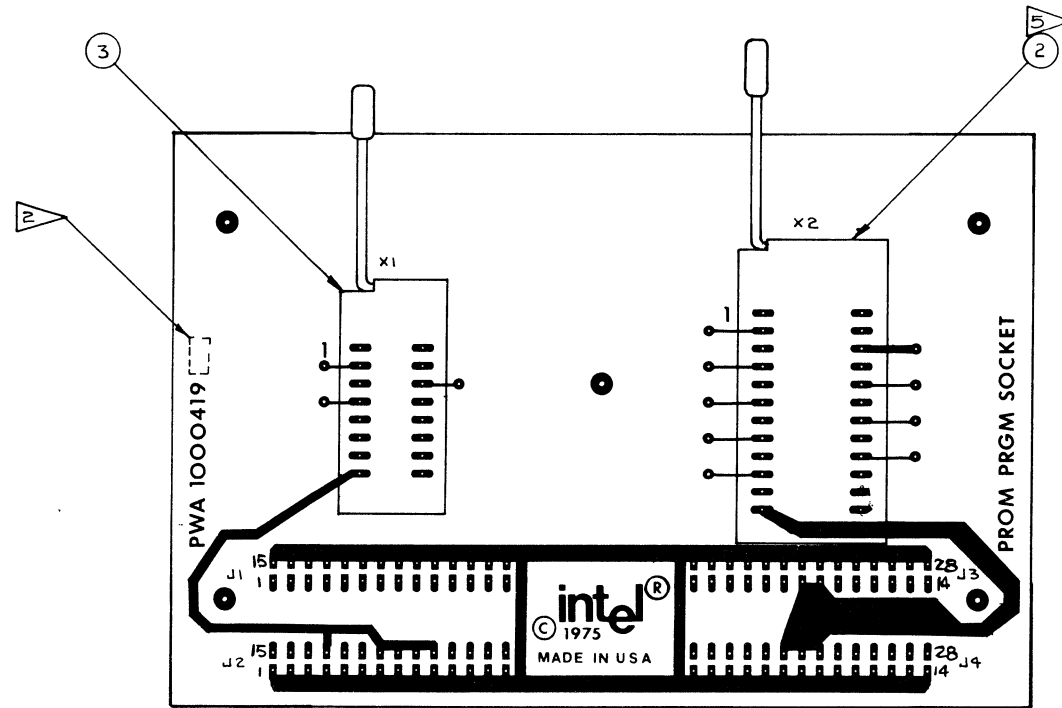
CONTROL #2
 CONTROL #1

TEST IZCB

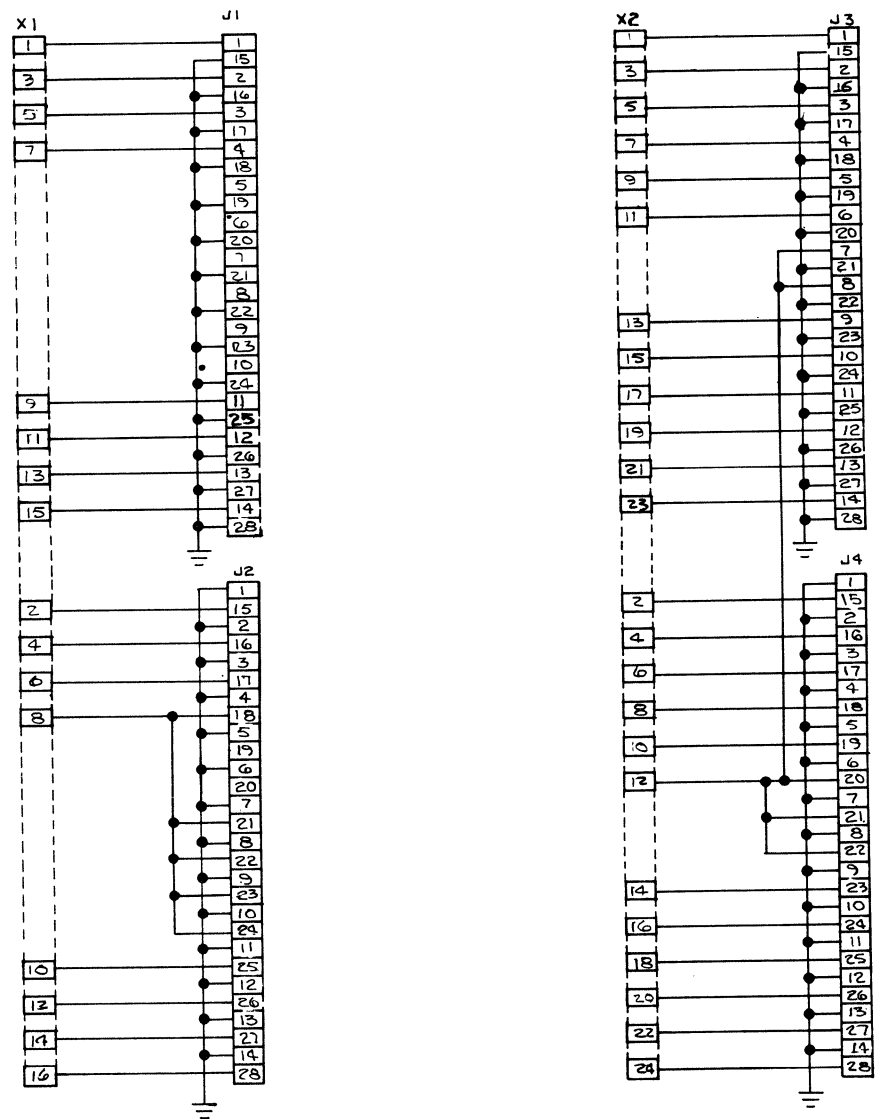
UPP

8 7 6 5 4 3 2 1

2	ENG RELEASE	3/1/75	10/1/75
A	PRODUCTION RELEASE	3/1/75	11/1/75
B	SEE ECO # 00261-1	3/1/75	11/1/75
C	SEE ECO # 00302	3/1/75	11/1/75
D	SEE ECO # 00500-1	3/1/75	11/1/75
E	SEE ECO # 00512-1	3/1/75	11/1/75
F	SEE ECO # 00983-1	3/1/75	11/1/75



SCHEMATIC 3



- NOTES: UNLESS OTHERWISE SPECIFIED;
1. ASSEMBLY NO. IS 1000419-01.
 2. INK STAMP DASH NUMBER & REVISION LEVEL IN POSITION SHOWN. USING CONTRASTING INK CHARACTERS TO BE .12 HIGH.
 3. P&I LEVEL OF F/II & PNB ARE THE SAME
 5. ZERO INSERTION PRESSURE SOCKET MOUNTING AND CLEANING INSTRUCTIONS
 - I. MATERIAL NOTE: POLYSULFONE MATERIAL IS GOOD UP TO 150°C CONTINUOUS OPERATION. CLEAN ONLY WITH METHYL ALCOHOL, FREON Tc (ONLY) OR WATER AND DETERGENT.
 - II. MOUNTING: THESE SOCKETS ARE DESIGNED PRIMARILY FOR P.C. BOARD MOUNTING OR USE WITH A RECEPTACLE. FOR P.C. MOUNTING SOCKET MUST BE SOLDERED WITH CONTACTS IN THE 'OPEN' POSITION.

ITEM NO	QUANTITY PER DASH NO	PART NUMBER	DESCRIPTION
4	4	68-097	CONN, 28 PIN, J1-4
1	3	68-129	SOCKET 16 PIN, X1
1	2	68-130	SOCKET 24 PIN, X2
1	1	1000420-01	PWB PROM PRGM SOCKET 16/24

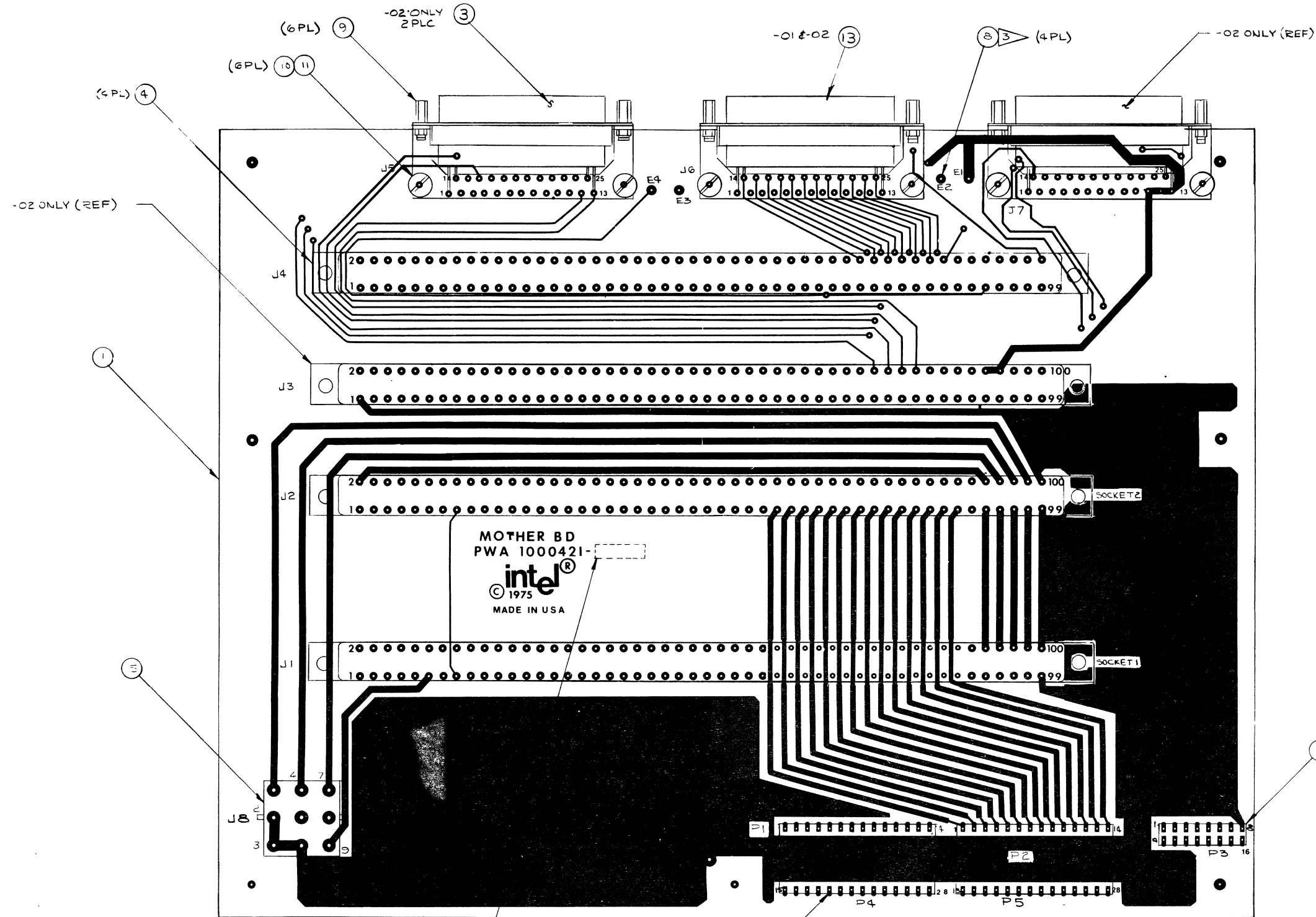
4000248	MDSUPP151	SCALE 2:1	SIGNATURE	DATE 3/1/75	<p>3065 BOWEN'S AVE SANTA CLARA, CALIF. 95051</p>
4000571	UPP 501	TOL 2 PLG 3 PLG ANGLE	DRN BY <i>Riemans</i>	3/24/75	
4000448	Mbs-Upp.101	MATERIAL	CHK BY <i>H. J. ...</i>	3/24/75	
NEXT ASSY USED ON		FINISH	DFT APPD <i>H. J. ...</i>	3/24/75	
			ENGR APPD <i>S. H. ...</i>	4/29/75	TITLE PRINTED WIRING ASSEMBLY PROM PROGRAMMER SOCKET, 16/24
			AUTH BY <i>S. H. ...</i>	4/29/75	SIZE DEPT DRAWING NO REV D MCD 1000419 F
			CODE SHEET 1 OF 1		UPP

8 7 6 5 4 3 2 1

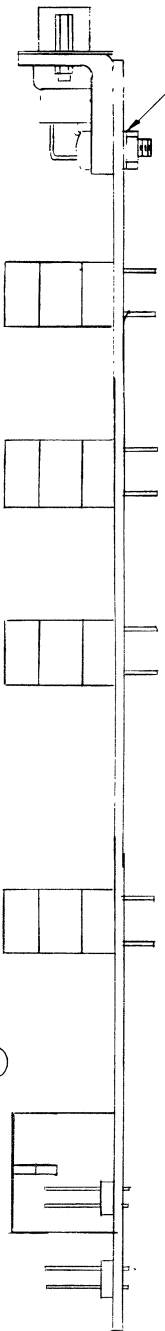
8 7 6 5 4 3 2 1

D
C
B
A

2	ENG RELEASE	10/18/75
A	PRODUCTION RELEASE	3/18/75
B	SEE ECO NO. #00257-	
C	SEE ECO # 0028-1	
D	SEE ECO # 00335	
2	UPDATED N/A USED ON	3/18/75



2 (NY LON WASHER) 6PL



NOTES: UNLESS OTHERWISE SPECIFIED;
 ASSY NO. IS 000421-XY
 1. STAMP DASH OR REV LTR IN POSITION SHOWN USING CONTRASTING INK CHARACTERS TO BE .12 HIGH.
 2. SWAGE LTO POSITION SHOWN 4 PL.

(4PL) 6
 -02 VERSION SHOWN
 -01 SAME AS -02 EXCEPT OMIT J3, J5, J7.

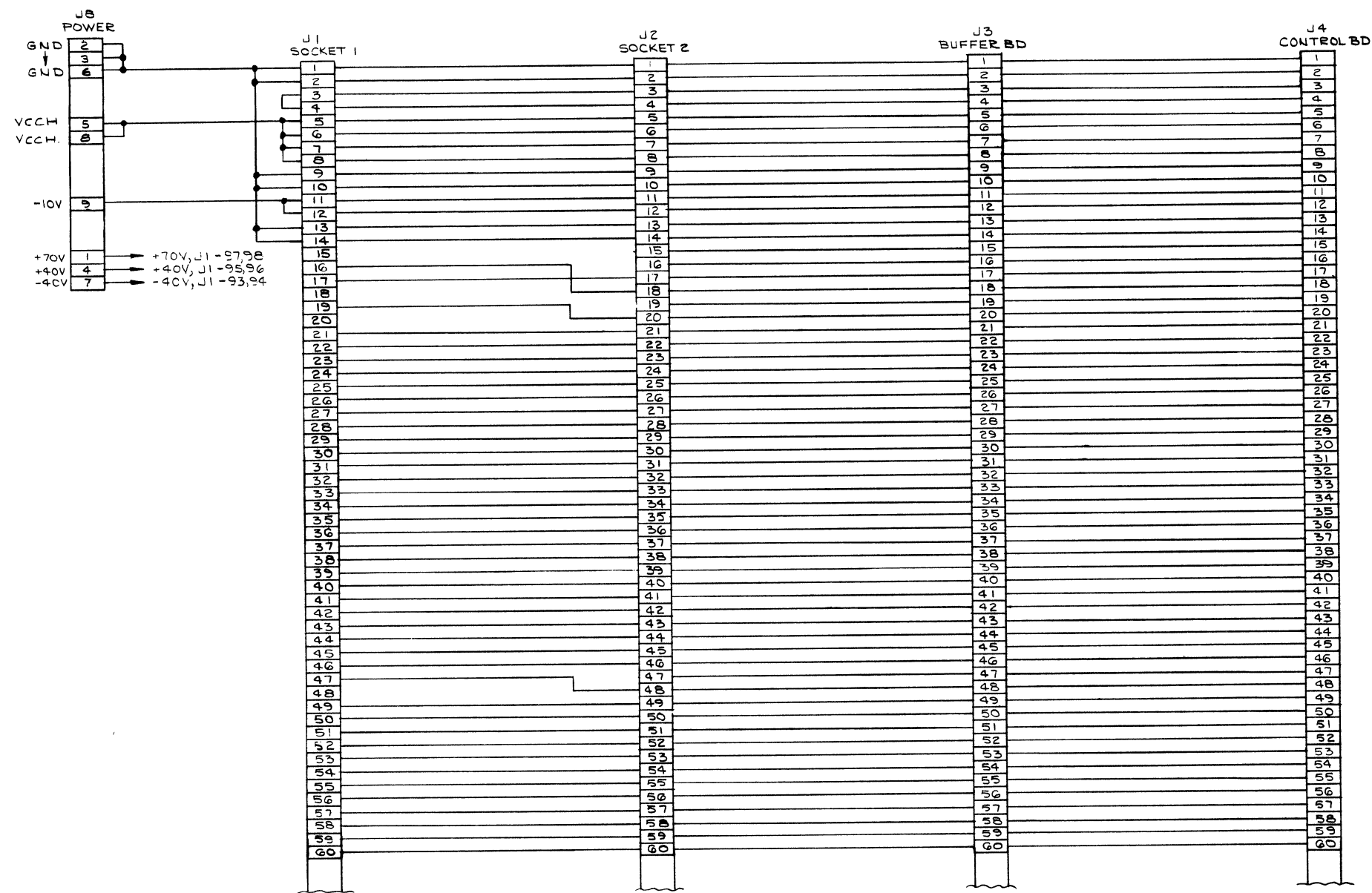
QUANTITY PER DASH NO		ITEM NO	PART NUMBER	DESCRIPTION
4000846	MDS-UPP-101/51			
4000846	MDS-UPP-102/51			
4000447	MDS-UPP-101			
4000447	MDS-UPP-102			

SCALE	2:1	SIGNATURE	DATE	3065 BOWERS AVE SANTA CLARA CALIF. 95051
TOL	2 PLC 3 PLC ANGLE	DRN BY	3/18/75	
MATERIAL	SEE PL	CHK BY	3/18/75	
FINISH		ENGR APPD	3/18/75	
		AUTH BY	4/23/75	REV
		CODE	SHEET 1 OF 1	D 410 1000421 D1

8 7 6 5 4 3 2 1

UPP 1

REVISIONS				
LTR	DESCRIPTION	SIGNATURE AND DATE		
		DFT	CHK	ENGR
1	ENG RELEASE	<i>[Signature]</i>		2/10/75
2	ENG RELEASE	<i>[Signature]</i>		2/18/75
A	PROD. RELEASE	<i>[Signature]</i>		3/18/75
B	SEE ECO NO. #257-3	<i>[Signature]</i>		4/2/75
C	SEE ECO # 00281-3	<i>[Signature]</i>		4/2/75
D	SEE ECO 00342	<i>[Signature]</i>		11-18-75
E	ECO 00357	<i>[Signature]</i>		11-18-75



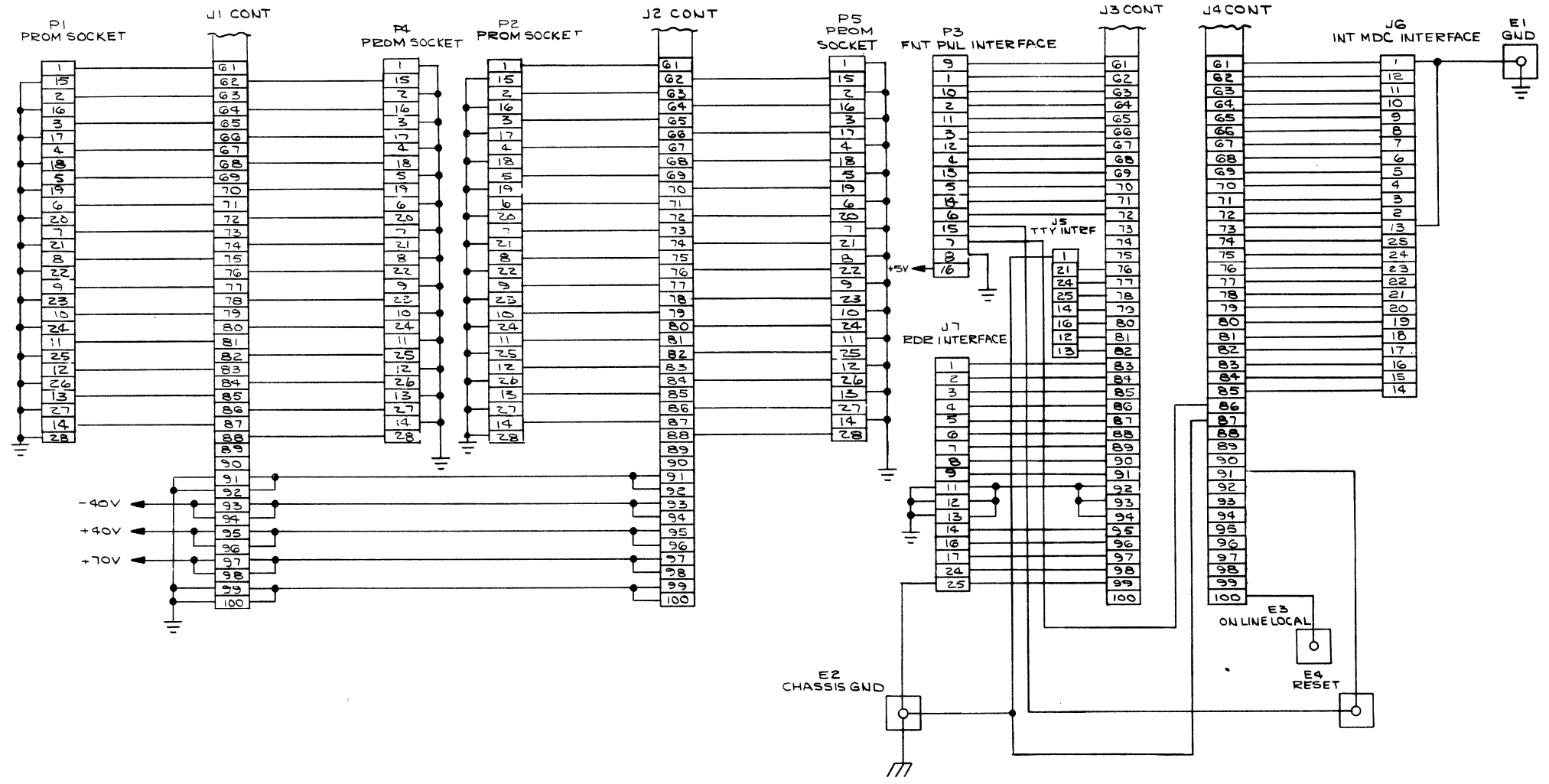
SEE SHT #2 FOR PINS 61-100

NOTES: UNLESS OTHERWISE SPECIFIED
 1. THIS DOC. REFLECTS ARTWORK REV. 2.

ITEM NO.	PART NUMBER	DESCRIPTION
QUANTITY PER DASH NO.		
SCALE: /		
TOL. ±	2 PLC	3 PLC ANGLE
MATERIAL: /		
FINISH: /		
SIGNATURE		DATE
DRN BY <i>[Signature]</i>		2/10/75
CHK BY <i>[Signature]</i>		2/18/75
DFT APPD <i>[Signature]</i>		3/18/75
ENGR APPD <i>[Signature]</i>		3/18/75
AUTH. BY <i>[Signature]</i>		4/2/75
CODE: SHEET 1 OF 2		SIZE DEPT DRAWING NO. REV
		D 410 2000423 E

UPP 1

REVISIONS				
LTR	DESCRIPTION	DFT	CHK	ENGR
	SEE SHT * 1			



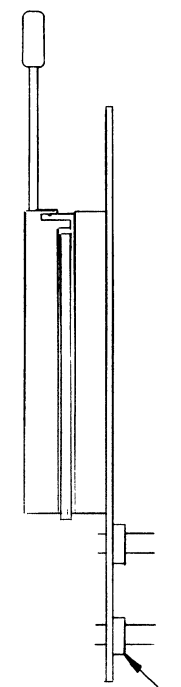
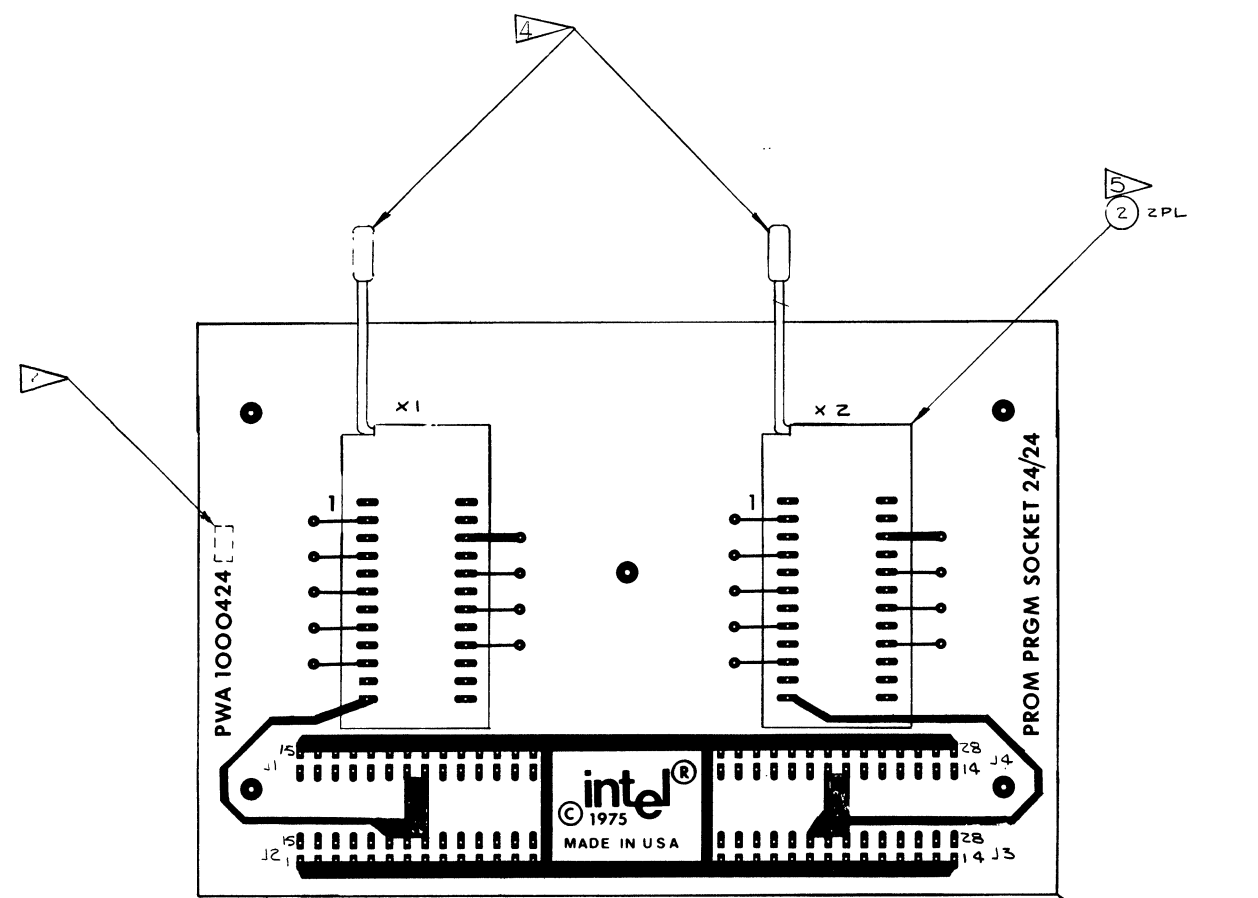
D
C
B
A

D
C
B
A

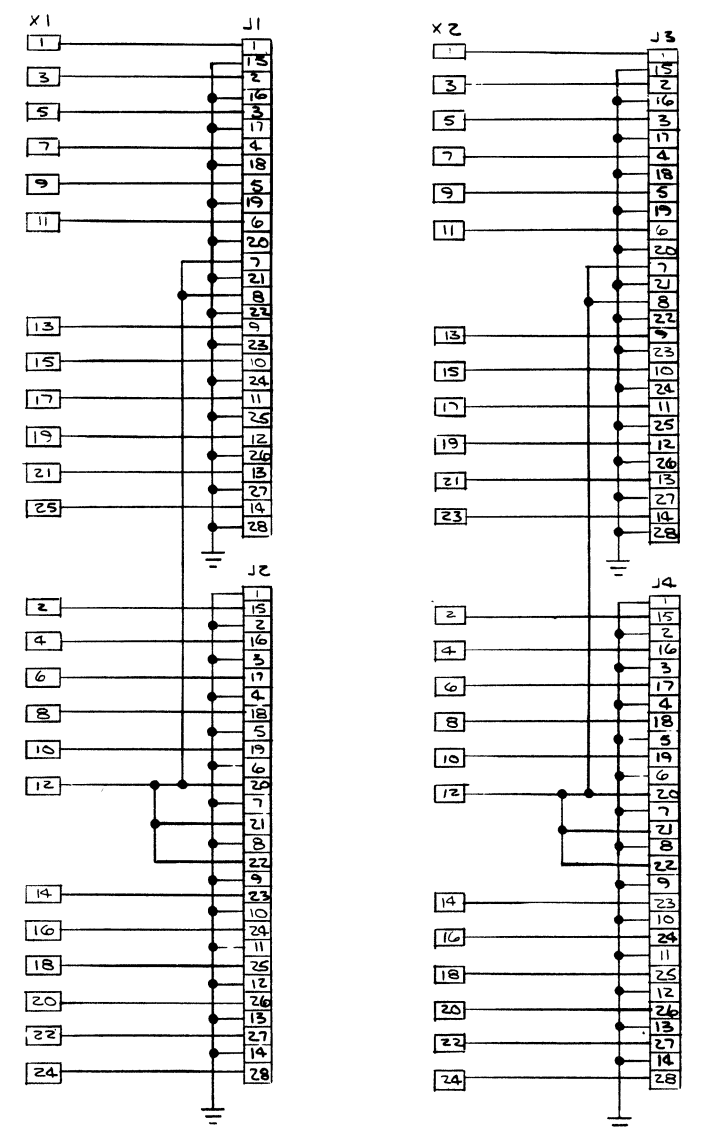
SCALE:	SIZE	DEPT	DRAWING NO.	REV
SHEET 2 OF 2	D	410	2000423	E

Upp 1 © INTEL 1978

REVISIONS			
TR	DESCRIPTION	SIGNATURE AND DATE	
		DFT	CHK ENGR
2	ENG RELEASE	<i>[Signature]</i>	<i>[Signature]</i>
A	PRODUCTION RELEASE	<i>[Signature]</i>	<i>[Signature]</i>
B	SEE ECO 00500-2	<i>[Signature]</i>	<i>[Signature]</i>
C	SEE ECO# 00512-2	<i>[Signature]</i>	<i>[Signature]</i>



SCHMATIC 3



- NOTES: UNLESS OTHERWISE SPECIFIED;
 1. ASSY NO. IS 1000424-01.
 2. INK STAMP DASH NUMBER IN POSITION SHOWN USING CONTRASTING INK CHARACTER TO BE .12 HIGH MIN.
 3. LATEST ARTWORK REV NO. IS 'A'.
 4. CLOSE CONTACTS ON SOCKETS BEFORE SOLDERING.
 5. ZERO INSERTION PRESSURE SOCKET MOUNTING AND CLEANING INSTRUCTIONS:
 I. MATERIAL NOTE: POLYSULFONE MATERIAL IS GOOD UP TO 150°C CONTINUOUS OPERATION. CLEAN ONLY WITH METHYL ALCOHOL, FREON 12 (ONLY) OR WATER AND DETERGENT.
 II. MOUNTING: THESE SOCKETS ARE DESIGNED PRIMARILY FOR P.C. BOARD MOUNTING OR USE WITH A RECEPTACLE. FOR P.C. BOARD MOUNTING SOCKET MUST BE SOLDERED WITH CONTACTS IN THE 'OPEN' POSITION.

QUANTITY PER DASH NO	ITEM NO	PART NUMBER	DESCRIPTION
4	3	68-097	CONN 28 PIN, J1-4
2	2	68-130	SOCKET, 24 PIN, X1-2
1	1	1000425	PWB PROM PRGM SKT, 24/24

SCALE	SIGNATURE	DATE	TITLE
2:1	<i>[Signature]</i>	3/20/75	PRINTED WIRING ASSEMBLY
TOL = 2 PLC 3 PLC ANGLE	DRN BY <i>[Signature]</i>	3/24/75	PROM PRGM SOCKET, 24/24
MATERIAL	CHK BY <i>[Signature]</i>	3/24/75	
FINISH:	DFT APPD <i>[Signature]</i>	3/24/75	
	ENGR APPD <i>[Signature]</i>	3/24/75	
	AUTH BY <i>[Signature]</i>	3/24/75	
	CODE: SHEET 1 OF 1		

SIZE	DEPT	DRAWING NO.	REV
D	410	1000424	C

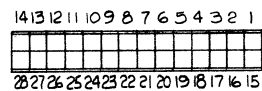
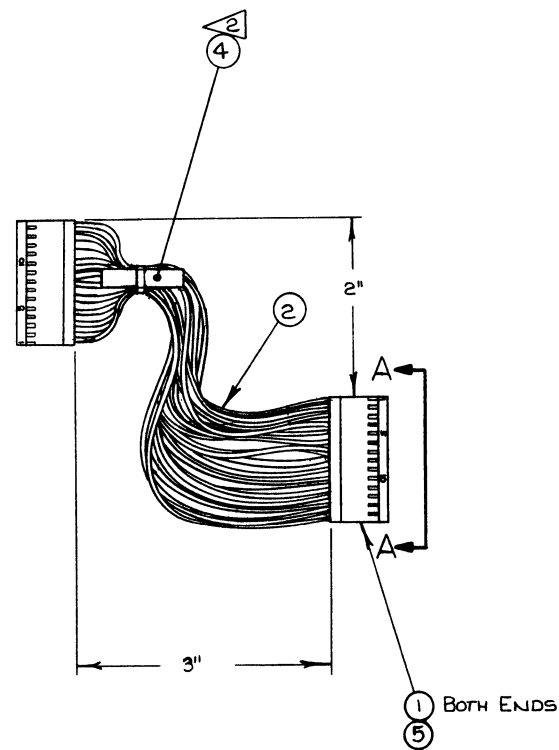
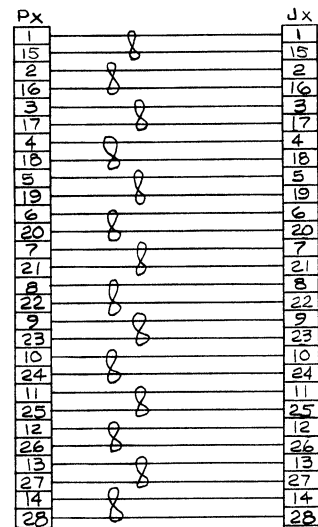
SECTION 2
HARNESS & CABLE ASSEMBLIES

- 4000440 - HARNESS ASSEMBLY PROM SOCKET
- 4000520 - EXTENSION CABLE
- 4000544 - U.P.P. - 998

UPP

REVISIONS

LTR	DESCRIPTION	SIGNATURE AND DATE		
		DFT	CHK	ENGR
1	ENGR RELEASE	3-28-75	5/12/75	5/12/75
A	PROD RELEASE	7-28-75		
B	SEE ECO 00508	8/12/75	8/27/75	9/1/75



VIEW A-A
(SCALE: 2/1)

NOTES: UNLESS OTHERWISE SPECIFIED,

1. ASSY NO IS 4000440-1.

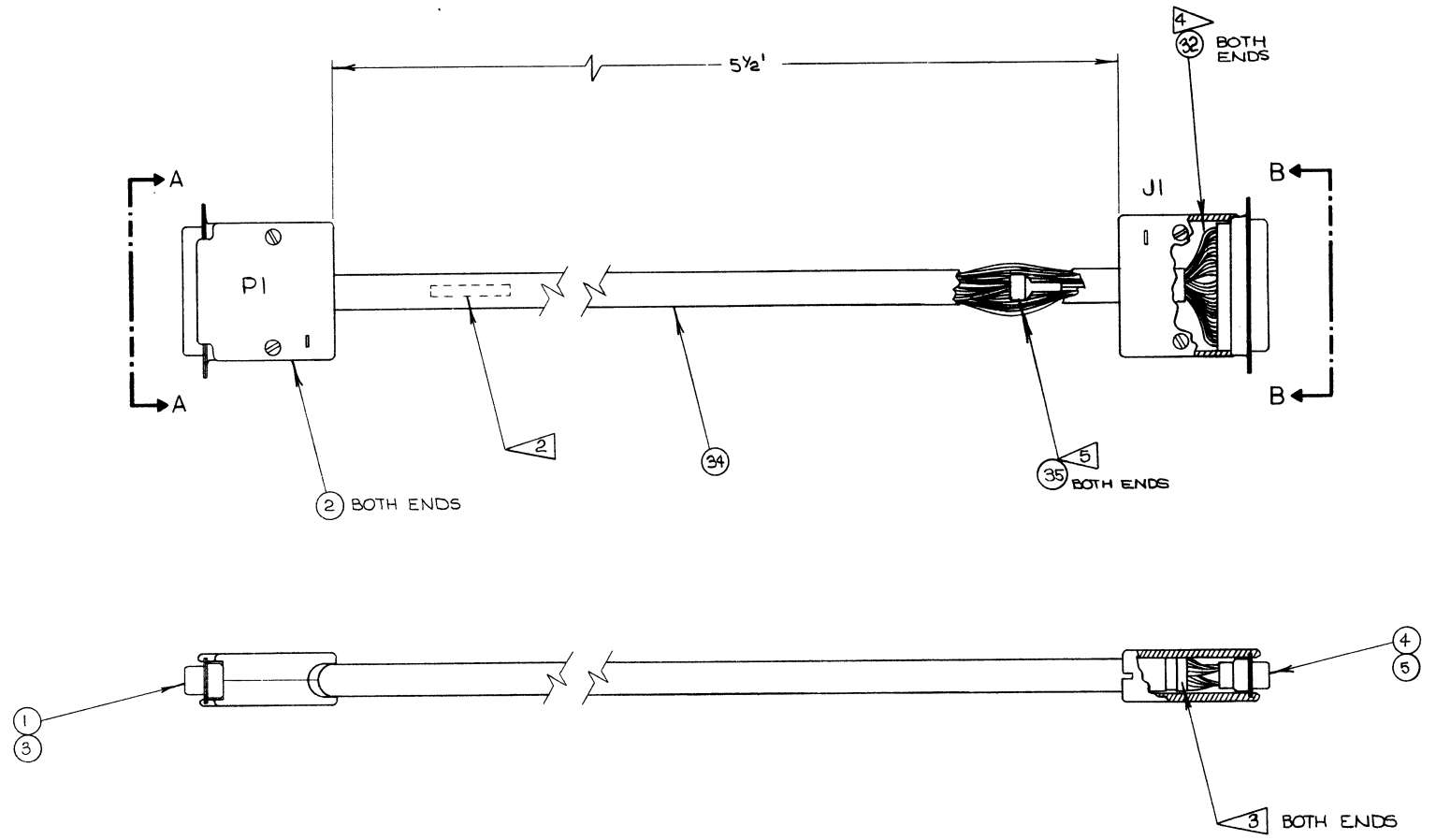
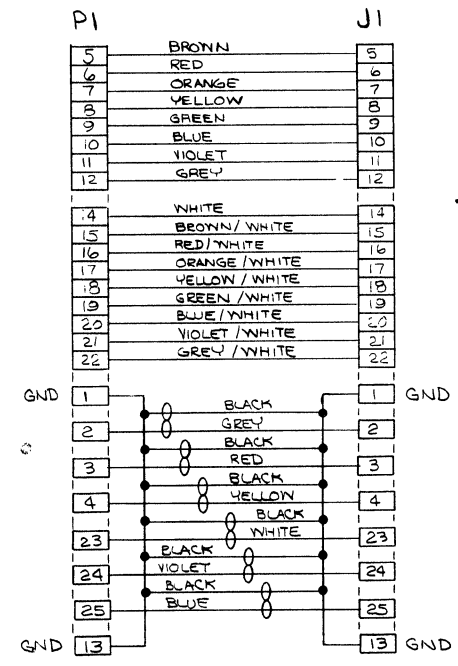
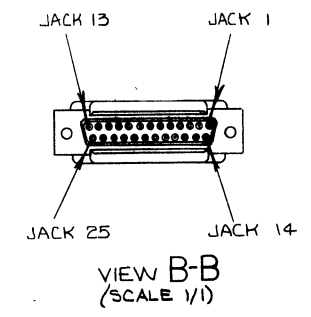
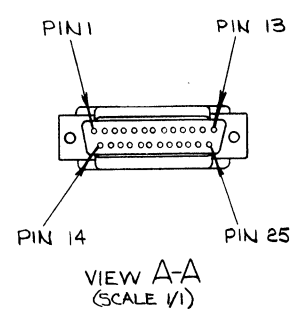
MARK ASSY NO. AND REV LTR. IN INK ONTO ITEM 4.

ITEM NO.	QUANTITY PER DASH NO.	PART NUMBER	DESCRIPTION
56	5	68-115	PIN, FEMALE,
1	4	80-000	TIE WRAP, LABELING
	3		
14	2	86-099	WIRE, 26 GA, BLK # OR TW PR
2	1	68-096	CONN, FEM, 28-PIN
01			

SCALE: 1/1		SIGNATURE		DATE		PARTS LIST	
TOL. ±	2 PLC	3 PLC	ANGLE	DRN BY	S. MAULEY	3-28-75	 3065 BOWERS AVE. SANTA CLARA CALIF. 95051
MATERIAL: SEE P.L.				CHK BY	[Signature]	5/12/75	
FINISH:				DFT APPD	[Signature]	5/12/75	
NEXT ASSY USED ON				ENGR APPD	[Signature]	5/12/75	
CODE: 4000440		SHEET 1 OF 1		TITLE		HARNESS ASSY PROM SOCKET	
SIZE	DEPT	DRAWING NO.	REV				
D	410	4000440	B				

UPP 1

REVISIONS			
LTR	DESCRIPTION	SIGNATURE AND DATE	
		DFT	ENGR
1	ENGR RELEASE	S.M.	6-3-75
A	PROD RELEASE	S.M.	6-1-75
B	SEE ECO # 00313	S.M.	9-21-75
B1	UPDATED N/A-USED ON	DS	5/20/76



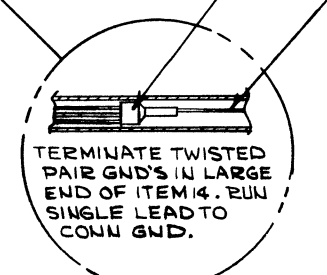
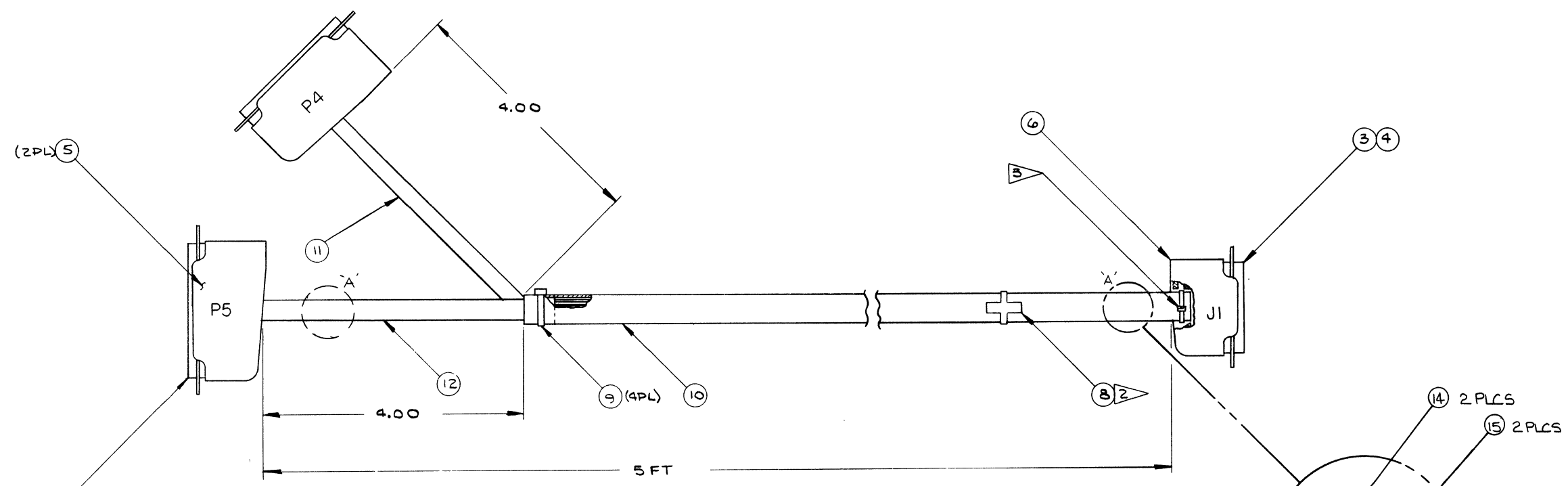
- NOTES:
UNLESS OTHERWISE SPECIFIED,
- ASSY NO IS 4000520-01.
 - MARK ASSY NO AND REV LTR IN INK APPROX WHERE SHOWN.
 - BRING INSULATION INSIDE HOOD AND PAST TIE WRAP APPROX 1/8" AS SHOWN.
 - RUN ITEM 32 FROM PIN/JACK 1 TO PIN/JACK 13. SOLDER CONNECT THE BLACK-INSULATED GND WIRES OF THE TWISTED PAIRS TO THIS BARE BUS.
 - TERMINATE BLACK GND WIRES IN LARGE END OF ITEM 35. RUN TWO SINGLE BLACK WIRES (ITEM 32) FROM SMALL END OF ITEM 35 INTO CONN J1, P1 (ITEMS 1, 4) AND TERMINATE AT PINS 1 AND 13.

QUANTITY PER DASH NO.		ITEM NO.	PART NUMBER	DESCRIPTION
SCALE: 1/1	TOL ±	2 PLC	3 PLC	ANGLE
MATERIAL: SEE R.L.		SIGNATURE		DATE
FINISH:		DRN BY	6-3-75	
NEXT ASSY		USED ON	CHK BY	6/3/75
			DFT APPD	6/12/75
			ENGR APPD	6/27/75
			AUTH BY	6/27/75
			CODE:	SHEET 1 OF 1

intel
 © INTEL 1975 SANTA CLARA CALIF. 95061
 TITLE: **UNIVERSAL PROM PROGRAMER CABLE**
 DEPT: **410** DRAWING NO: **4000520** REV: **B1**

UPP 1

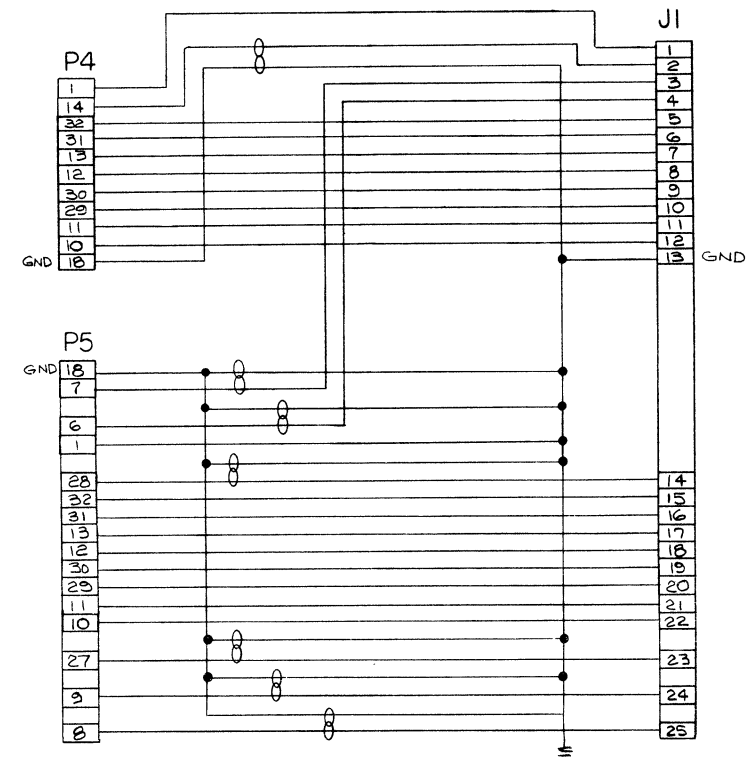
REVISIONS			
LTR	DESCRIPTION	SIGNATURE AND DATE	
		DFT	CHK
1	ENG RELEASE	<i>[Signature]</i>	<i>[Signature]</i>
A	PROD REL	9-11-75	8/1/75
B	SEE ECO # 00343	J. J.	8/1/75
C	SEE ECO # 00394	10-21-75	8/1/75
D	SEE ECO # 00616	11-17-76	8/1/75



SKETCH A (2 PLCS)

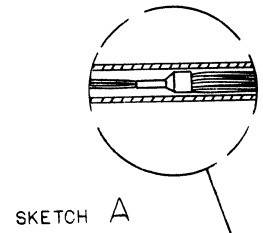
NOTES: UNLESS OTHERWISE SPECIFIED;

- 1. P/N IS: 4000544-01.
- 2. INK STAMP P/N & REV LTR IN POSITION SHOWN.
- 3. INSTALL TIE WRAP INSIDE CONN HOOD AS SHOWN. (TYP)

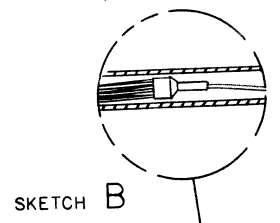


QUANTITY PER DASH NO.		ITEM NO.	PART NUMBER	DESCRIPTION
SCALE: 1:1				
TOL. * 2 PLC 3 PLC ANGLE				
.125				
MATERIAL: SEE P/L				
FINISH:				
4000631 IMM6-90				
4000622 IMM8-92				
4000621 IMM8-91				
NEXT ASSY	USED ON			
SIGNATURE		DATE	PARTS LIST	
<i>[Signature]</i>		7/15/75	intel® 3065 BOWERS AVE. SANTA CLARA CALIF. 95051	
CHK BY <i>[Signature]</i>		7/15/75	TITLE CABLE ASSEMBLY, INTELLEC.B, INTELLEC.B/MOD&O, /LPP	
DFT APPD <i>[Signature]</i>		8/7/75	SIZE DEPT DRAWING NO. REV	
ENGR APPD <i>[Signature]</i>			D 410 4000544 D	
AUTH BY <i>[Signature]</i>			UPP 1	
CODE: <		SHEET 1 OF 1		

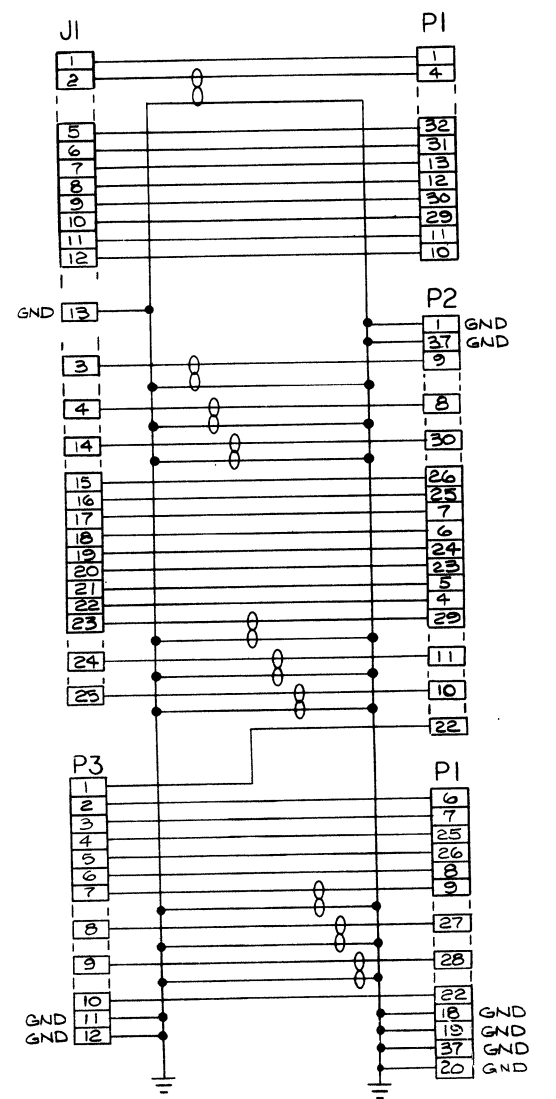
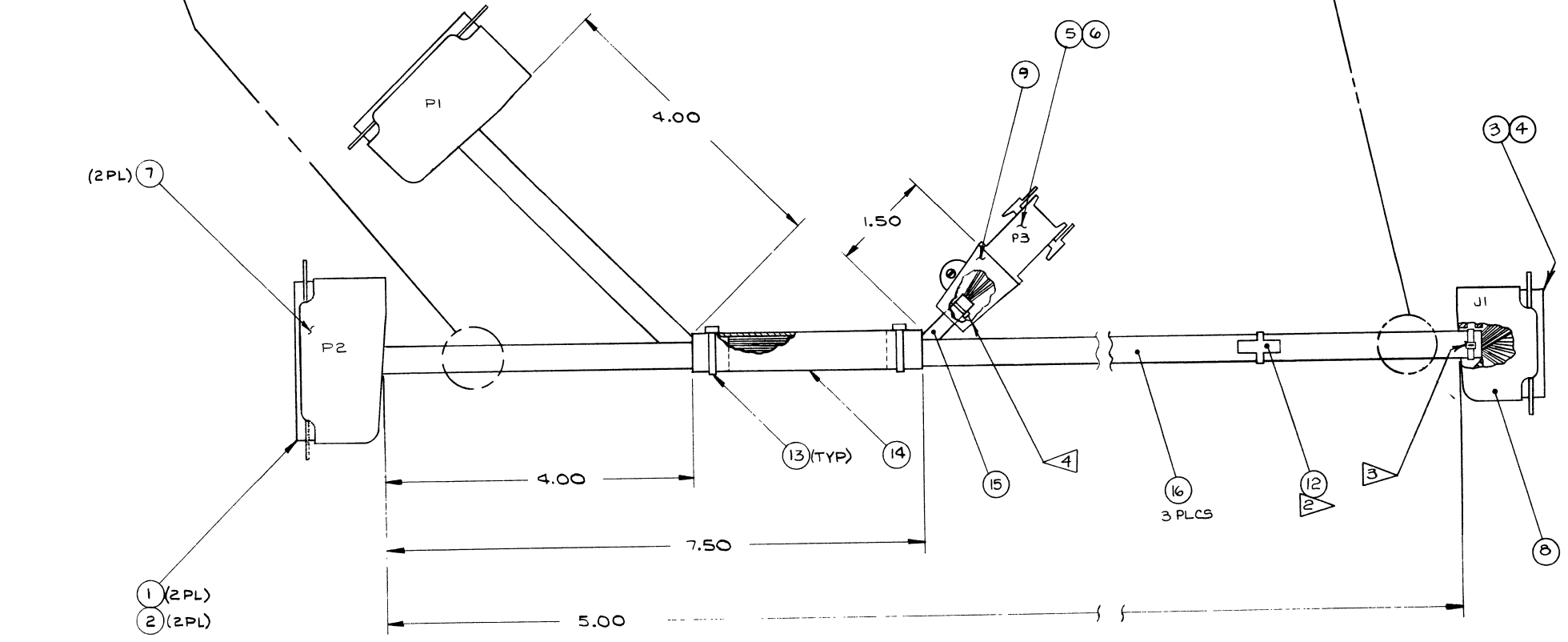
REVISIONS			SIGNATURE AND DATE		
LTR	DESCRIPTION		DFT	CHK	ENGR
1	ENG RELEASE				



TERMINATE BLK WIRES (EXCEPT THAT ONE TWISTED WITH A RED WIRE) INTO THE LARGE END OF A BUTT SPLICE (ITEM 18). RUN TWO BLK WIRES FROM SMALL END OF BUTT SPLICE INTO CONN "P2" AND TERMINATE AT PINS 1 & 32. FOR CLARITY THIS SKETCH DOES NOT SHOW OTHER WIRES ENTERING CONN "P2".



TERMINATE ALL BLK WIRES INTO LARGE END OF BUTT SPLICE (ITEM 18). RUN ONE BLK WIRE (ITEM 38) FROM SMALL END OF BUTT SPLICE INTO CONN "J1" AND TERMINATE AT PIN 13. FOR CLARITY THIS SKETCH DOES NOT SHOW OTHER WIRES ENTERING CONN "J1".

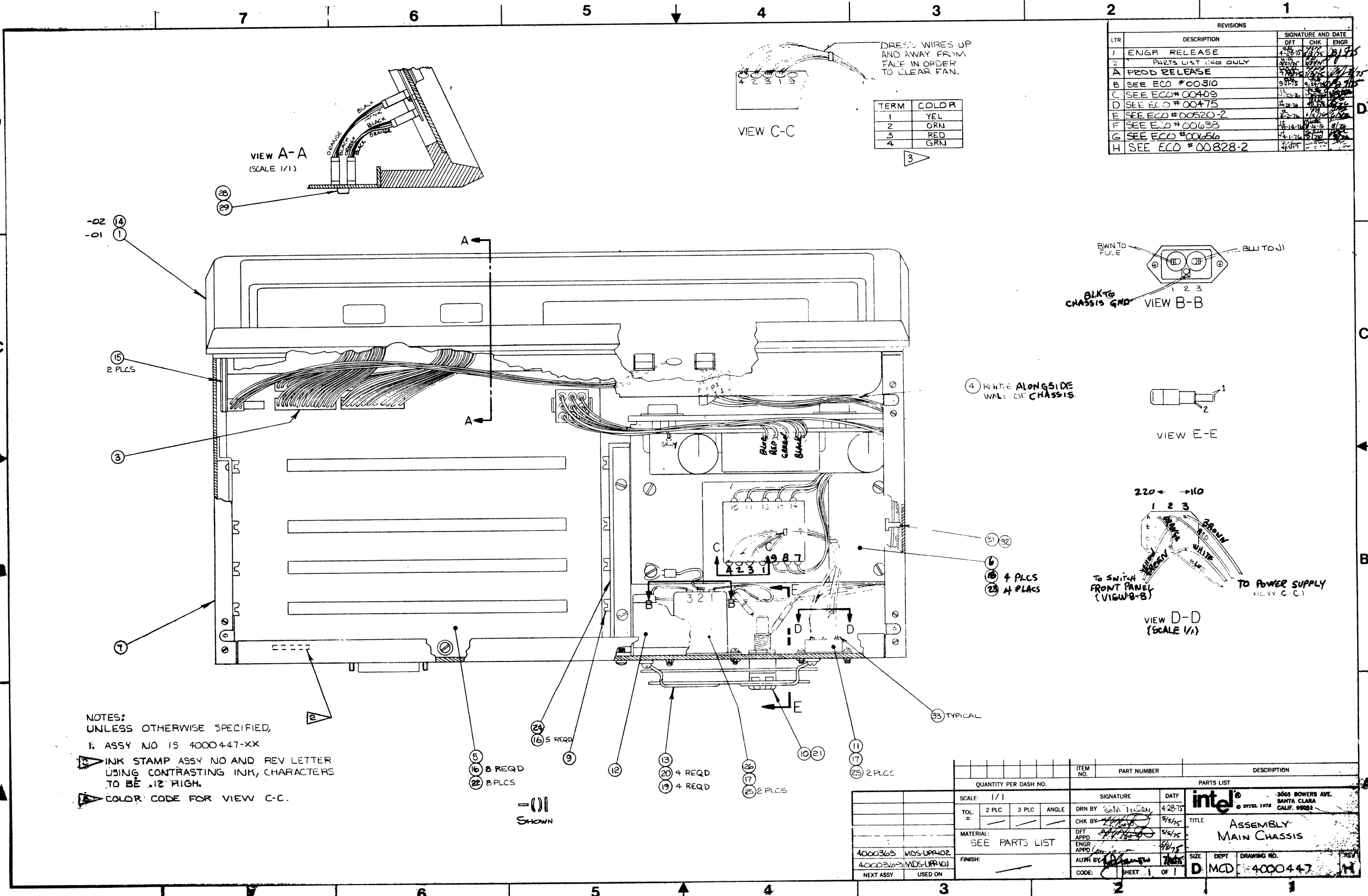


- NOTES: UNLESS OTHERWISE SPECIFIED;
- 1. P/N IS 4000545-01.
 - 2. INK STAMP P/N & REV LTR IN POSITION SHOWN.
 - 3. INSTALL TIE WRAP INSIDE CONN HOOD AS SHOWN. (3 PL)
 - 4. INSTALL TIE WRAP INSIDE STRAIN RELIEF AS SHOWN.

QUANTITY PER DASH NO.		ITEM NO.	PART NUMBER	DESCRIPTION
SCALE:		SIGNATURE		DATE
TOL. ±	2 PLC	3 PLC	ANGLE	DRN BY
	.125			7/15/75
MATERIAL:		DFT APPD		7/15/75
SEE P/L		ENGR APPD		7/15/75
FINISH:		ALPH BY		
4000349	Mbs-UPP-100	CODE:	SHEET 1 OF 1	SIZE DEPT DRAWING NO. REV
NEXT ASSY	USED ON			D 410 E4000545 1

SECTION 3
MAJOR ASSEMBLIES

- 4000447 - MAIN CHASSIS ASSEMBLY
- 4000448 - FRONT PANEL ASSEMBLY
- 4000450 - MAIN FRAME ASSEMBLY

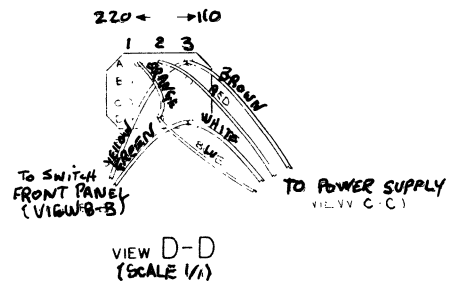
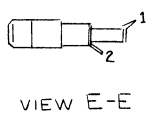
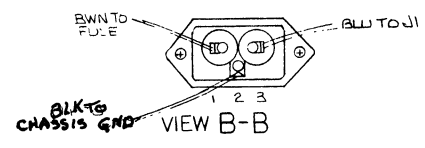


VIEW A-A
(SCALE 1/1)

VIEW C-C

REVISIONS			
LTR	DESCRIPTION	SIGNATURE AND DATE	
		DFT	ENGR
1	ENGR RELEASE	4-28-75	[Signature]
2	PARTS LIST CHG ONLY	5/15/75	[Signature]
A	PROD RELEASE	7/15/75	[Signature]
B	SEE ECO #00510	9/15/75	[Signature]
C	SEE ECO #00409	11/20/75	[Signature]
D	SEE ECO #00475	12-27-75	[Signature]
E	SEE ECO #00520-2	1-2-76	[Signature]
F	SEE ECO #00633	1-14-76	[Signature]
G	SEE ECO #00656	4-1-76	[Signature]
H	SEE ECO #00828-2	4-30-76	[Signature]

TERM	COLOR
1	YEL
2	DRN
3	RED
4	GRN



NOTES:
UNLESS OTHERWISE SPECIFIED,
1. ASSY NO IS 4000447-XX
2. INK STAMP ASSY NO AND REV LETTER USING CONTRASTING INK, CHARACTERS TO BE .12" HIGH.
3. COLOR CODE FOR VIEW C-C.

—(—) SHOWN

QUANTITY PER DASH NO.		PARTS LIST	
SCALE:	1/1	SIGNATURE	DATE
TOL. 2 PLC	3 PLC	DRN BY [Signature]	4-28-75
ANGLE		CHK BY [Signature]	5/15/75
MATERIAL: SEE PARTS LIST		DFT APPD [Signature]	5/15/75
FINISH:		ENGR APPD [Signature]	4/15/75
NEXT ASSY USED ON		APPR BY [Signature]	7/15/75
		CODE: SHEET 1 OF 1	

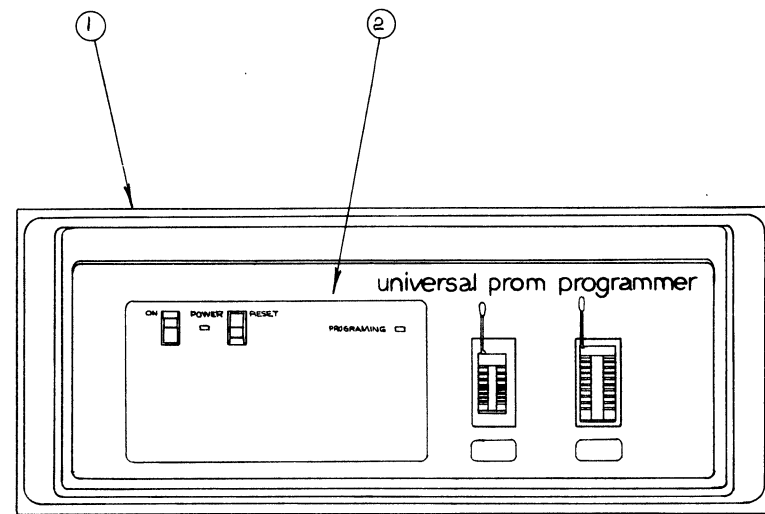
3055 BOWERS AVE.
SANTA CLARA CALIF. 95051

intel

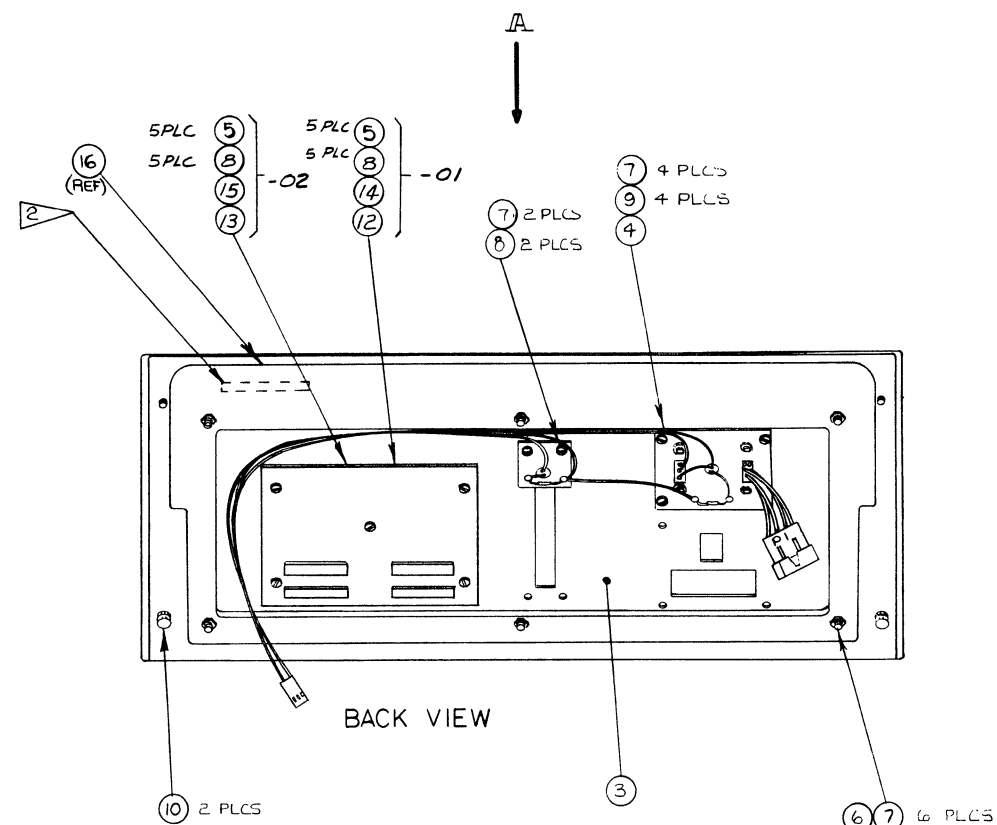
TITLE: ASSEMBLY MAIN CHASSIS

SIZE: D MCD DEPT: 4000447

REVISIONS				
LTR	DESCRIPTION	SIGNATURE AND DATE		
		DFT	CHK	ENGR
I	ENGR RELEASE			
A	-02 ADDED. PROD RELEASE			
B	SEE ECO 00312-3			
C	SEE ECO 00529			

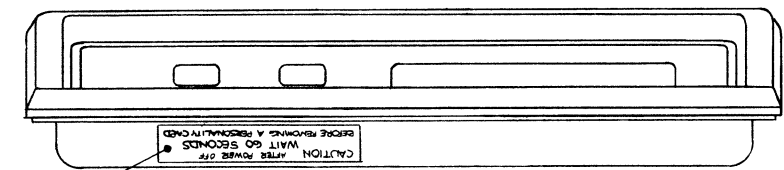


FRONT VIEW



BACK VIEW

- () |
SHOWN



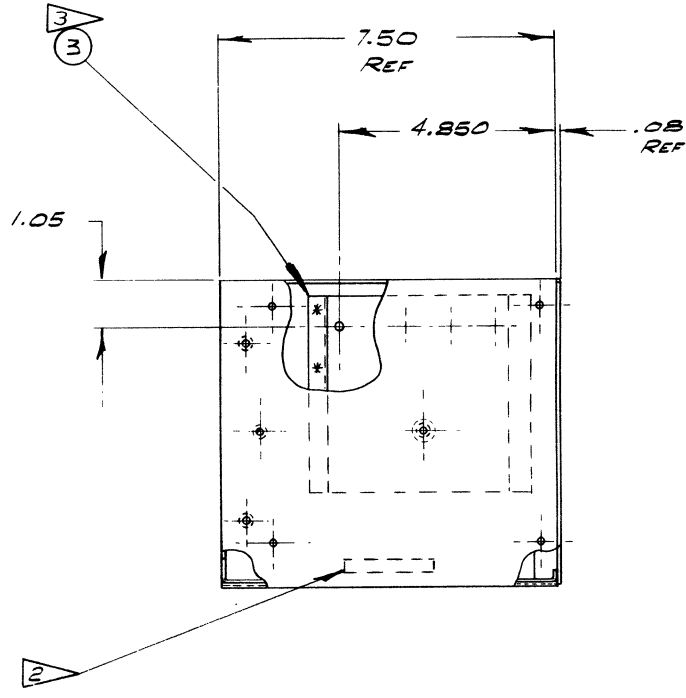
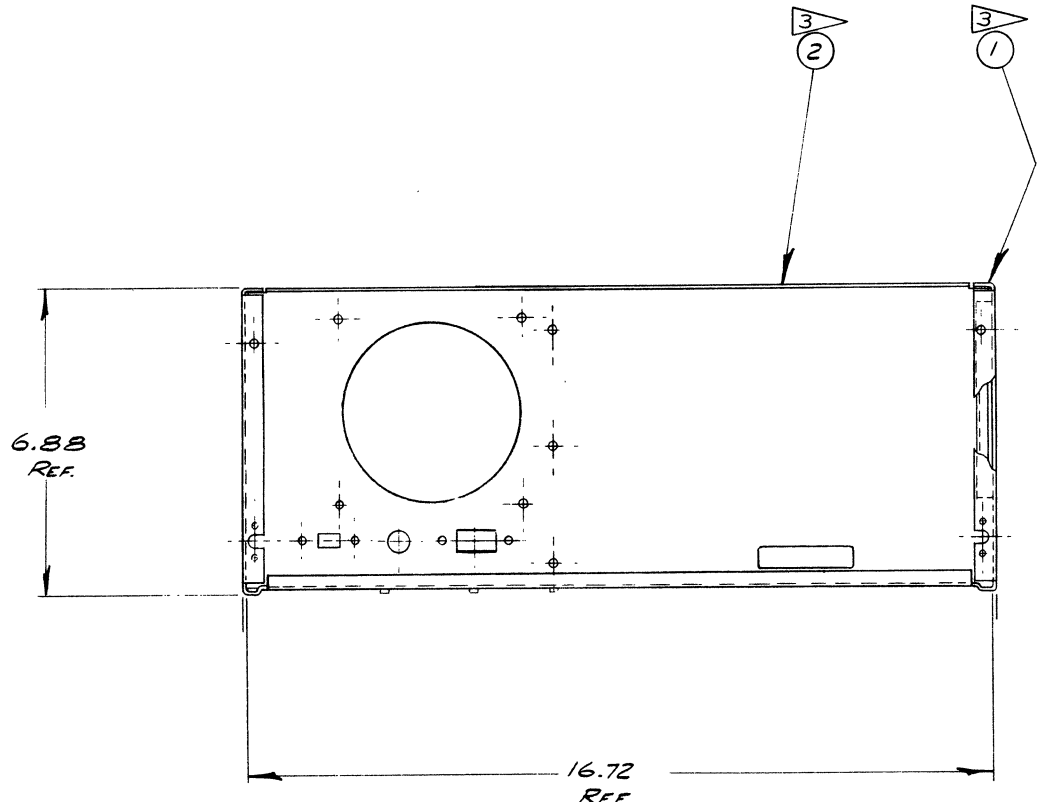
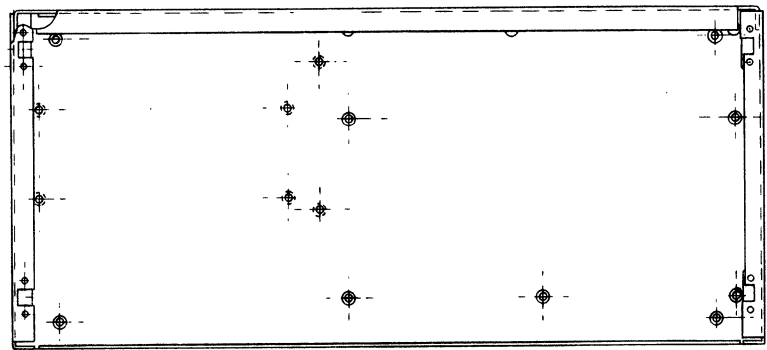
NOTES:
UNLESS OTHERWISE SPECIFIED,
1. ASSY NO IS 4000442-XX

2. INK STAMP ASSY NO AND REV LETTER IN POSITION SHOWN USING CONTRASTING INK, CHARACTERS TO BE .12 HIGH

3. PLACE LABEL, ITEM 16, APPROX WHERE SHOWN. TYPE ON LABEL TO READ FROM FRONT VIEW.

QUANTITY PER DASH NO.		ITEM NO.	PART NUMBER	DESCRIPTION
SCALE: 1:2		SIGNATURE		DATE
TOL	2 PLC	3 PLC	ANGLE	DRN BY
*	/	/	/	5/7/75
MATERIAL:		DFT		5/7/75
SEE PARTS LIST		ENGR		5/7/75
FINISH:		APPD		5/7/75
4000447	MDS UPP 102	AUTH BY		7/1/75
4000447	MDS UPP-101	CODE:		SHEET OF
NEXT ASSY	USED ON	PARTS LIST		DESCRIPTION
		intel		3065 BOWERS AVE. SANTA CLARA CALIF. 95051
		TITLE		FRONT PANEL ASSEMBLY
SIZE	DEPT	DRAWING NO.	REV	
D	410	4000442	C	

REVISIONS				
LTR	DESCRIPTION	SIGNATURE AND DATE		
		DFT	CHK	ENGR
1	ENG. RELEASE	4/17/75	J.P.	4/17/75
A	PROD RELEASE	7/16/75	J.P.	7/16/75
B	SEE ECO #00303	8/21/75	J.P.	8/21/75
C	SEE ECO #00308	9/19/75	J.P.	9/19/75
D	SEE ECO #00474	11/18/75	J.P.	11/18/75
E	SEE ECO #00574	12-21-76	J.P.	12-21-76



- NOTES:
- PART No is 3000450-XX
 - MARK PART No & REV LETTER IN POSITION SHOWN USING CONTRASTING INK. CHARACTERS TO BE .12 HIGH.
 - THESE ITEMS TO BE SPOT WELDED TOGETHER AS SHOWN ON THIS SHEET
 - SEE TABLE
 - SILKSCREEN A/WORK REV A AVAILABLE FROM MCD DRAFTING

4 FINISH TABLE

VERSION	FINISH
-01	CHARACTERS & LINES TO BE NITRO BLUE WITH THE EXCEPTION OF THE WORD 'CAUTION' WHICH WILL BE RED.
-02	CHARACTERS & LINES TO BE GRAY WITH THE EXCEPTION OF THE WORD 'CAUTION' WHICH WILL BE RED. (SHERWIN-WILLIAMS #245)

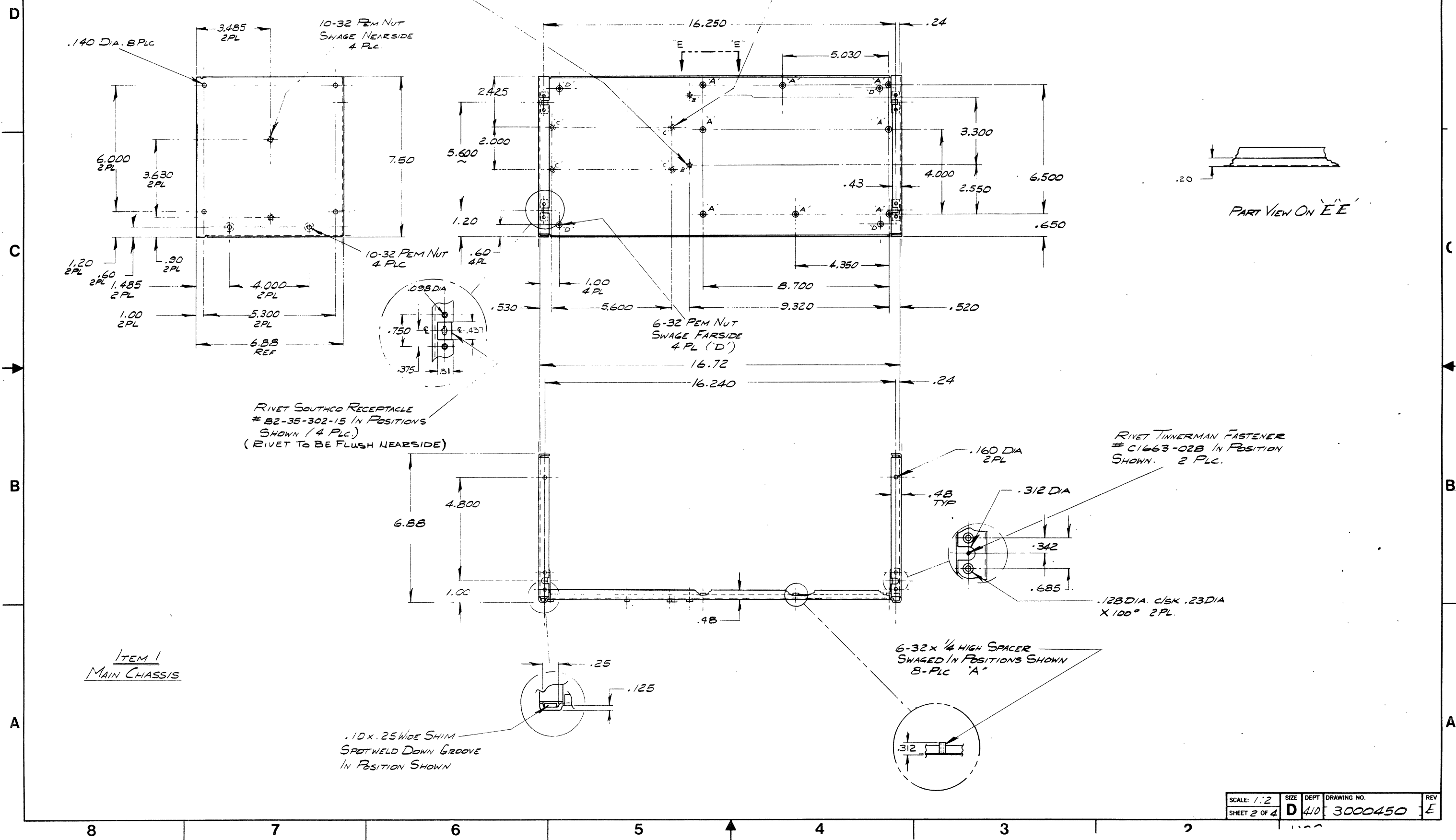
QUANTITY PER DASH NO.		PARTS LIST	
SCALE:	1:2	SIGNATURE	DATE
TOL =	2 PLC 3 PLC ANGLE	DRN BY	4/17/75
	.02 .010 0°15'	CHK BY	4/17/75
MATERIAL:	.08 THK AL	DFT APPD	4/17/75
FINISH:	ALODINE CLEAR	ENGR APPD	7/16/75
		AUTH BY	7/16/75
		CODE:	SHEET 1 OF 4

ITEM NO.	PART NUMBER	DESCRIPTION
1	3	CROSS SUPPORT
1	2	REAR PANEL
1	1	MAIN CHASSIS

intel		3065 BOWERS AVE. SANTA CLARA CALIF. 95051	
TITLE		MAIN FRAME ASSEMBLY	
SIZE	DEPT	DRAWING NO.	REV
D	410	3000450	E

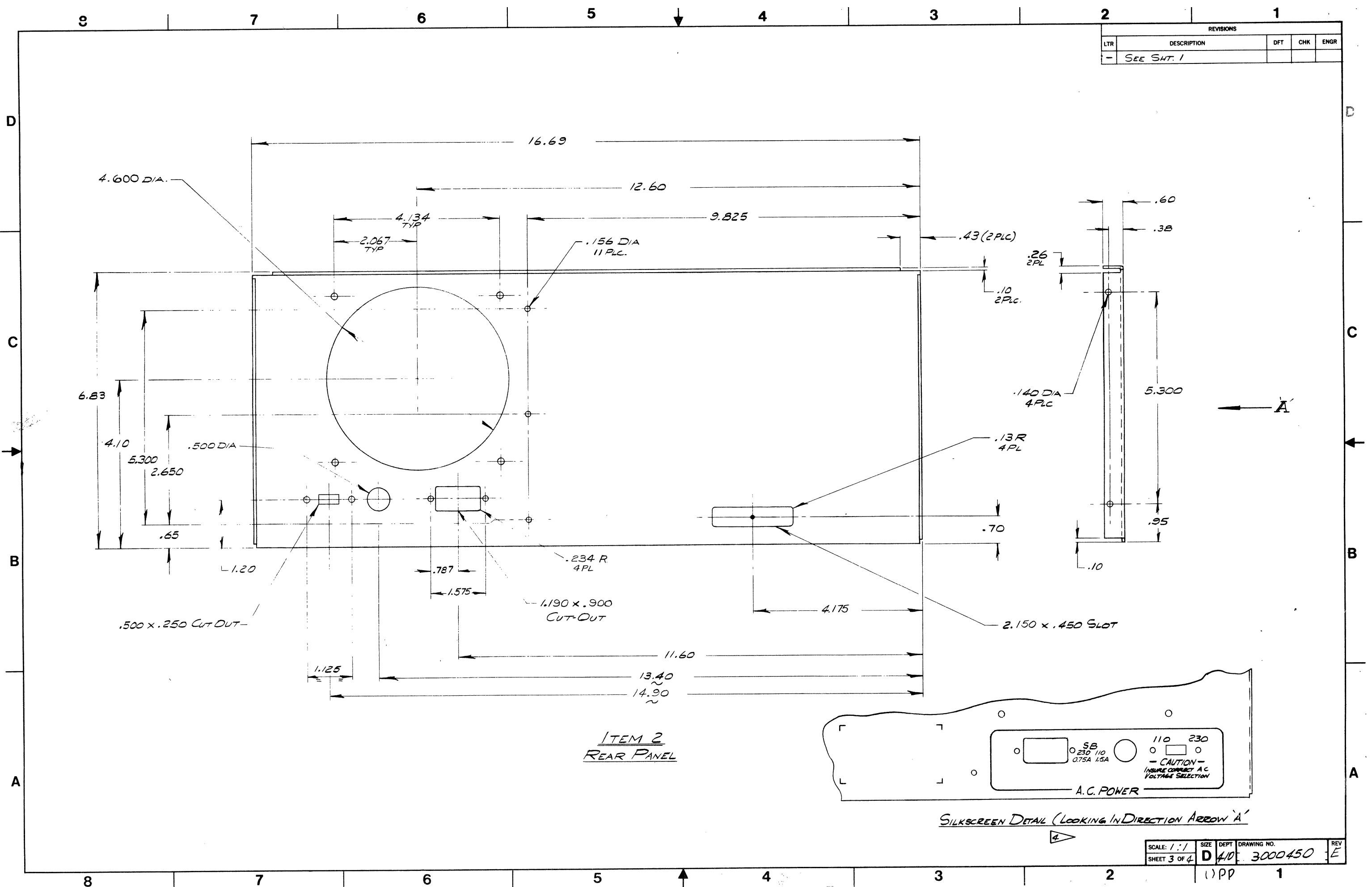
8 7 6 5 4 3 2 1

REVISIONS				
LTR	DESCRIPTION	DFT	CHK	ENGR
-	SEE SHT. 1			



SCALE: 1:2	SIZE: D	DEPT: 410	DRAWING NO: 3000450	REV: E
SHEET 2 OF 4				

REVISIONS				
LTR	DESCRIPTION	DFT	CHK	ENGR
-	SEE SHT. 1			



ITEM 2
REAR PANEL

SILKSCREEN DETAIL (LOOKING IN DIRECTION ARROW 'A')

SCALE: 1:1	SIZE: D	DEPT: 410	DRAWING NO.: 3000450	REV: E
SHEET 3 OF 4			(1) PP	

8

7

6

5

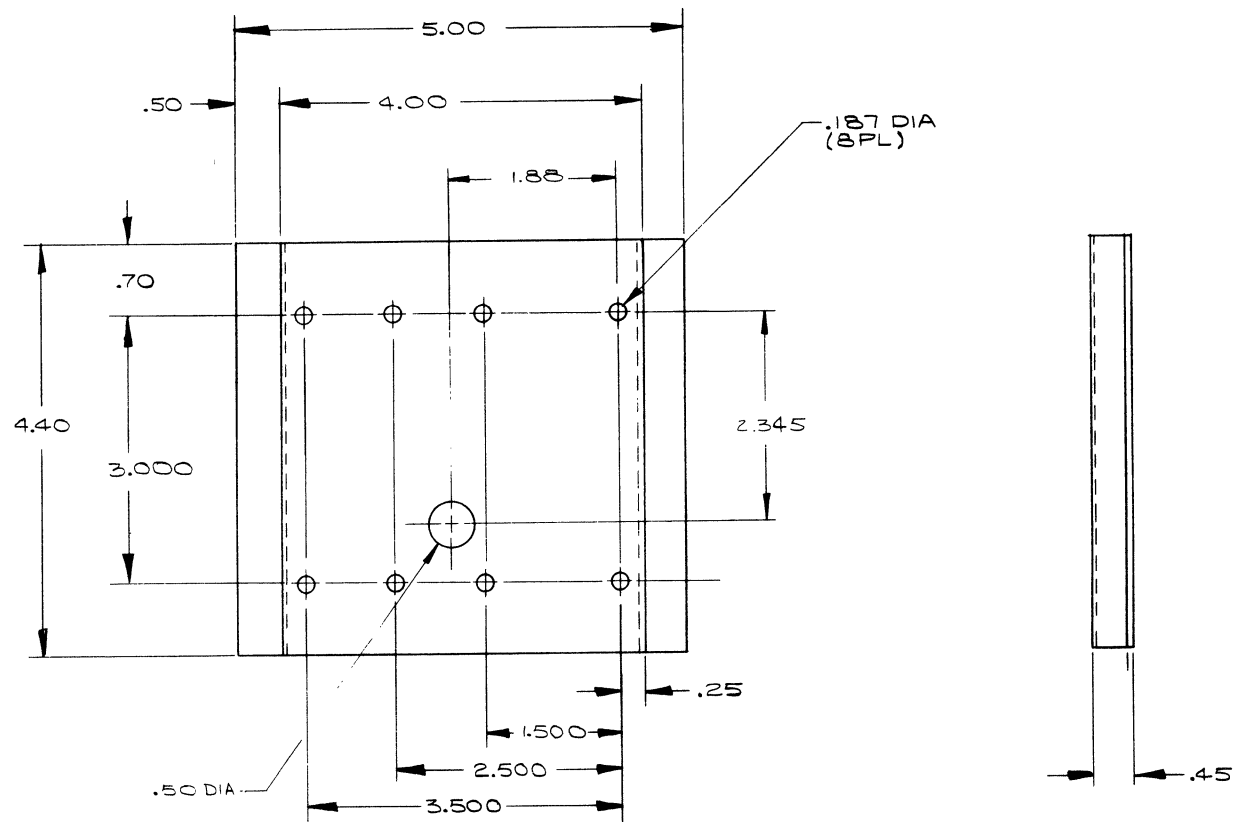
4

3

2

1

REVISIONS				
LTR	DESCRIPTION	DFT	CHK	ENGR
-	SEE SHT #1			



ITEM 3
CROSS SUPPORT

SCALE: 1:1	SIZE: D	DEPT: 410	DRAWING NO: 3000450	REV: E
SHEET 4 OF 4				

UPP 1

8

7

6

5

4

3

2

1

SECTION 4
SYSTEM POWER

4000399 - POWER SUPPLY

2000497 - SCHEMATIC - AC/DC POWER DISTRIBUTION

12205F - POWER ONE SCHEMATIC

REVISIONS			SIGNATURE AND DATE		
LTR	DESCRIPTION	DFT	CHK	ENGR	DATE
D	REDRAWN PER ECO #828-1				4-13-77

ELECTRICAL SPECS:
A.C. INPUT
 115-220V 50-60Hz FIELD SELECTABLE
D.C. OUTPUT - REGULATED
 STABILITY: ±0.1% FOR AN 8 HR PERIOD AFTER INTIAL WARM-UP.
 RESPONSE TIME: LESS THAN 50μ SEC FOR 50-100% LOAD CHANGE. VOLTAGE CHANGE NOT TO EXCEED ± 5%

+5.85 VDC. VCCH
 MAX LOAD - 2.5A
 REGULATION - 0.2% (LINE & LOAD)
 MAX RIPPLE - 10MV PK-PK
 CURRENT LIMIT - 3.5A
 OVER VOLTAGE PROTECTION - @ 6.8V

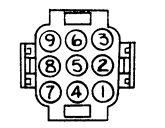
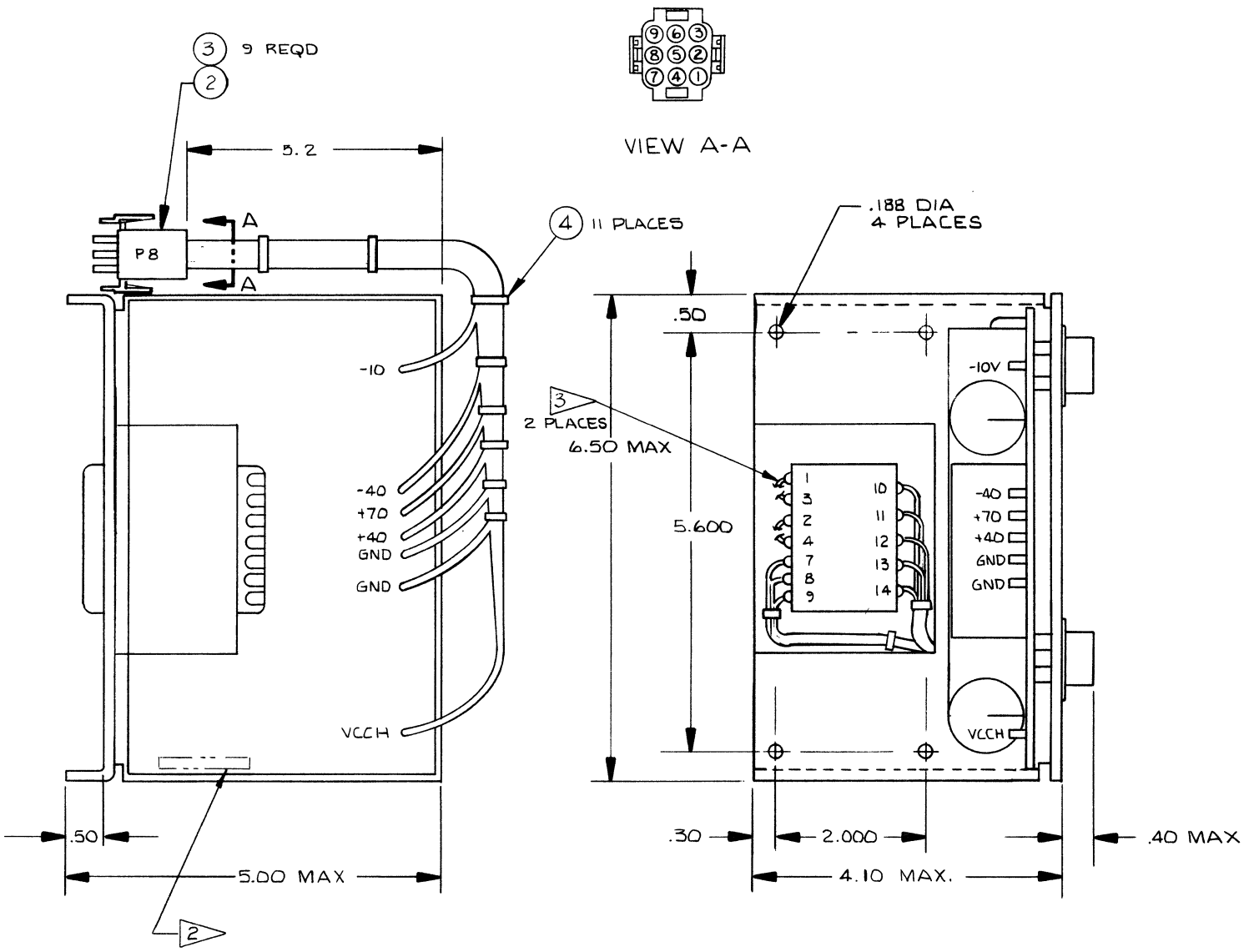
-10 VDC
 MAX LOAD - 0.75A
 REGULATION - 0.3% (LINE & LOAD)
 MAX RIPPLE - 10MV PK-PK
 CURRENT LIMIT - 1.25A

D.C. OUTPUT - UNREGULATED
 ± 40VDC
 MAX LOAD - 0.5A @ 115V A.C.
 MAX VOLTAGE - ±55V @ 20 MA @ 125 V.A.C.
 MIN VOLTAGE - ±35V @ 0.5A @ 105V A.C.
 MAX RIPPLE - ≤ 3V PP

+70 VDC
 MAX LOAD - 0.4A @ 115V A.C.
 MAX VOLTAGE - +90V @ 20MA @ 125V A.C.
 MIN VOLTAGE - +63V @ 0.4A @ 105V A.C.
 MAX RIPPLE - ≤ 6.5V PP

ENVIRONMENT
 TEMP 0° - 65°C WITH MOVING AIR (75CFM)
 HUMIDITY - UP TO 90% RELATIVE HUMIDITY WITH NO CONDENSATION

MECHANICAL SPECS:
 TERMINAL LUGS ON ALL 5 OUTPUTS
 FUSES ON ± 40 AND + 80, FUSE @ 1A
 WEIGHT - ≤ 6 LBS
 DIMENSIONS AS SHOWN
 TIE CLIPS INSTALLED APPROX WHERE SHOWN
 22 AWG WIRE USED
 WORKMANSHIP TO CONFORM TO MCS STD QAW9007



- NOTES: UNLESS OTHERWISE SPECIFIED,**
- PART NO. IS 4500399-01.
 - INK STAMP PART NO. AND REV LTR IN APPROXIMATE POSITION SHOWN USING CONTRASTING INK CHARACTERS TO BE .12 HIGH.
 - THESE HARDWARE CONNECTIONS MUST BE CUT AND ELIMINATED.
 - FOR PROCUREMENT SEE LV. 4500399.

NO.	FROM	TO	COLOR & SIZE
9	-10V	P8-9	BLU 20 AWG
8	VCCH	P8-8	RED
7	-40V	P8-7	YEL
6	GND	P8-6	BLK
5	VCCH	P8-5	RED
4	+40V	P8-4	GRY
3	GND	P8-3	BLK
2	GND	P8-2	BLK
1	+70V	P8-1	BRN 20 AWG

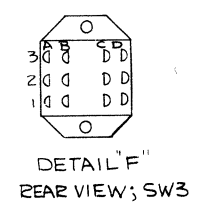
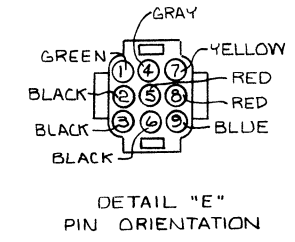
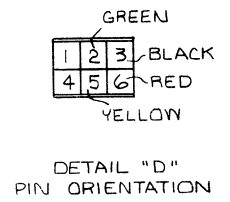
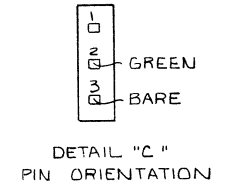
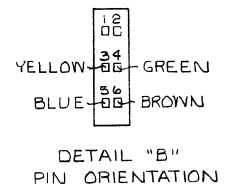
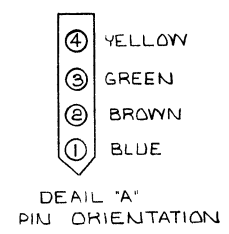
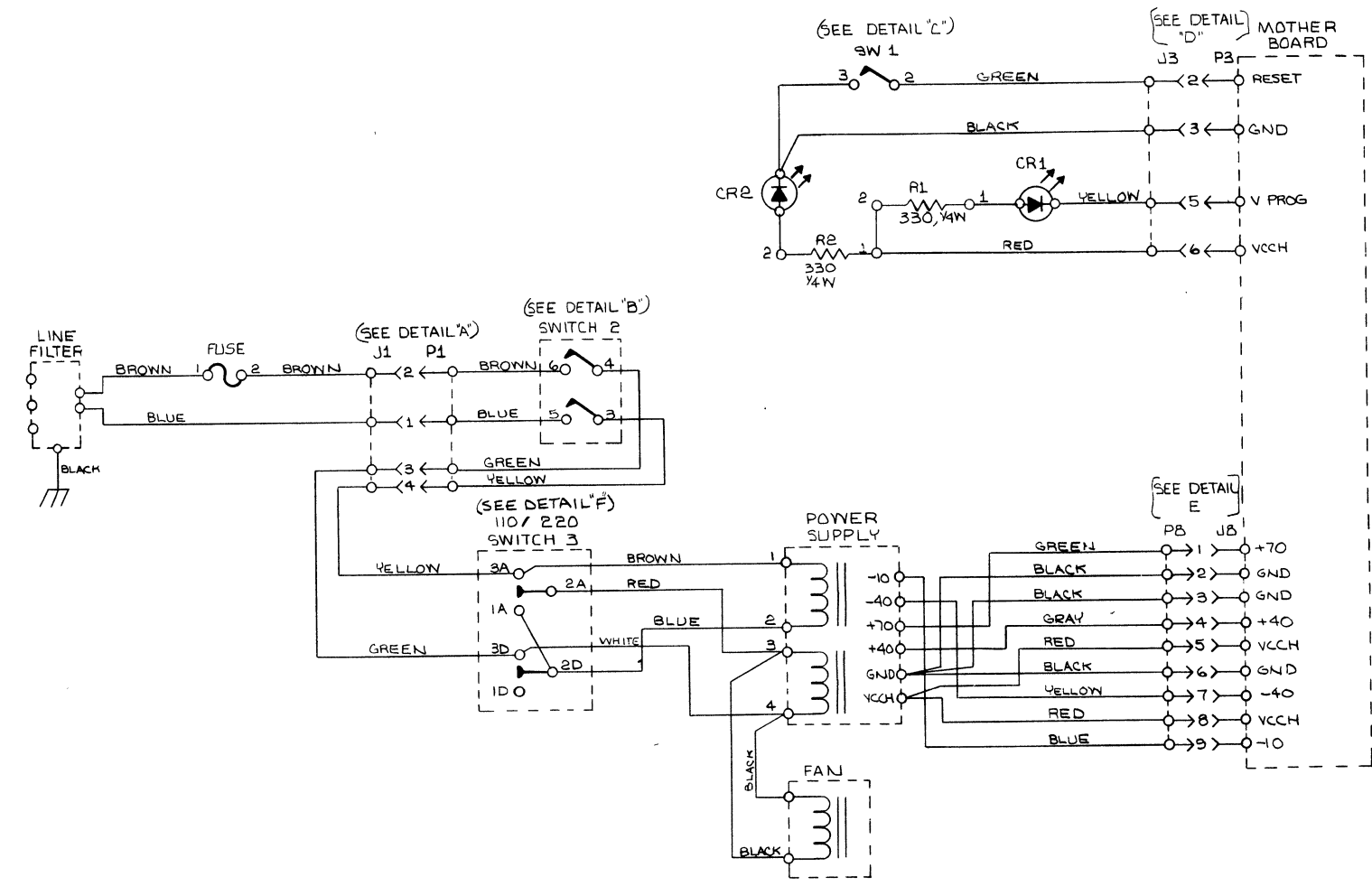
ITEM NO.	PART NUMBER	DESCRIPTION
11	4	PANDUIT-PLT 1.51 TIE WRAP
9	3	AMP # 350536 CONTACT, FEM, 18-20 AWG
1	2	AMP # 350551-1 CONN, MALE, 9 PDS
1	1	4500399-01 POWER SUPPLY

SCALE: 1/1	SIGNATURE: R. SLOCUM	DATE: 4/13/77
TOL. ± .02 .010	CHK BY: J. Chaturvedi	4/15/77
MATERIAL:	DFT APPD: [Signature]	ENGR APPD: [Signature]
FINISH:	AUTH BY: [Signature]	DATE: 4/15/77
CODE:	SHEET 1 OF 1	

QUANTITY PER DASH NO.	PARTS LIST	
	SIZE	DEPT
	D	MCD
	DRAWING NO.	REV
	4500399	D

8 7 6 5 4 3 2 1

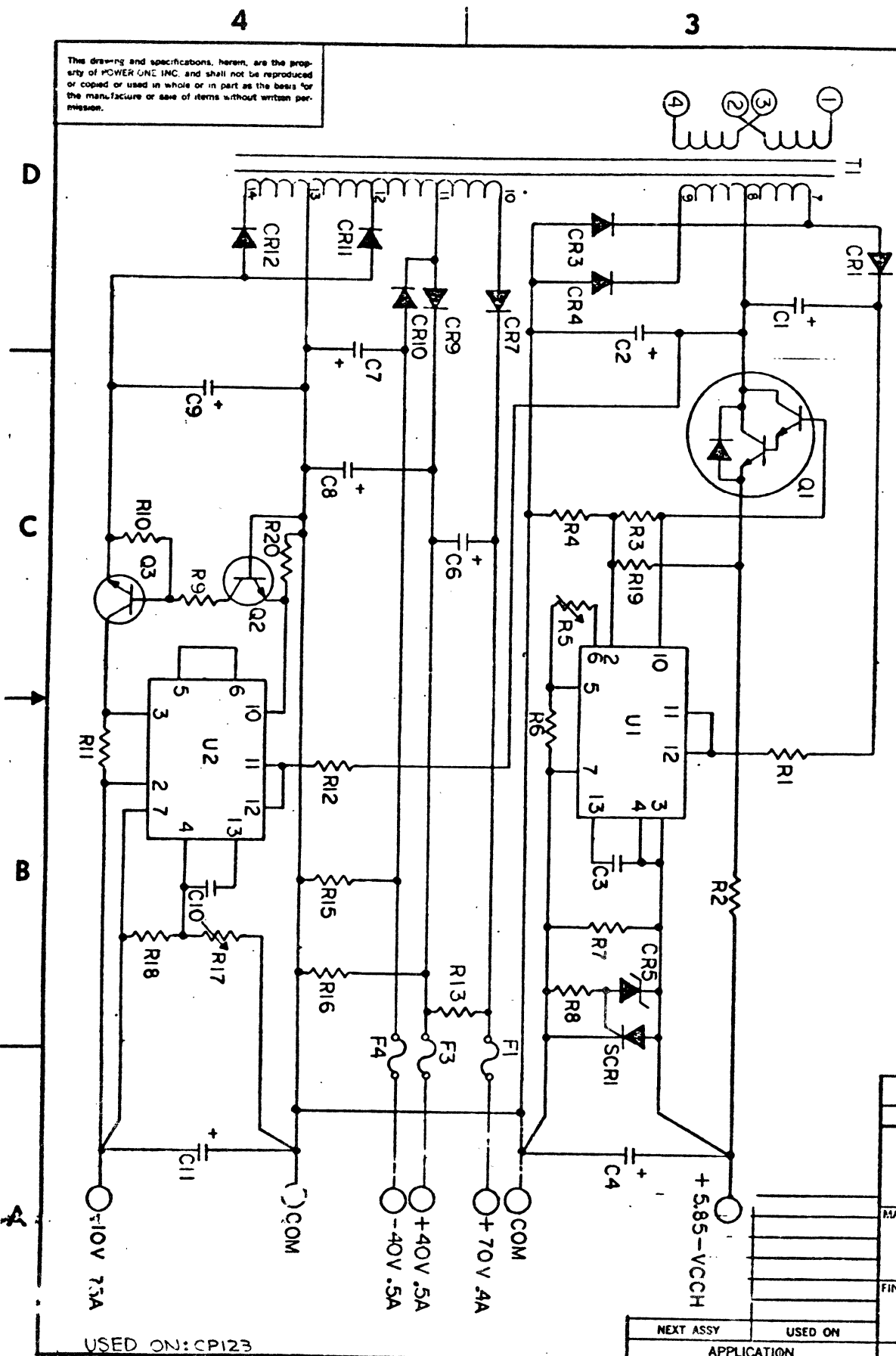
REVISIONS				
LTR	DESCRIPTION	SIGNATURE AND DATE		
		DFT	CHK	ENGR
1	ENGR RELEASE	6/1/75	7/1/75	
A	PROD RELEASE	6-1-75	8/1/75	
A1	UPDATED N/A-USED ON	DS	5/20/76	



QUANTITY PER DASH NO.		ITEM NO.	PART NUMBER	DESCRIPTION					
SCALE: ---	TOL: ±	2 PLC	3 PLC	ANGLE	SIGNATURE	DATE	PARTS LIST		
4000845 MDS-UPP 101/51	4000845 MDS-UPP 102/51	4000369 MDS-UPP 101	4000369 MDS-UPP 102	NEXT ASSY USED ON	DRN BY: S. M. O'Quinn	6-1-75	intel® 3065 BOWERS AVE. SANTA CLARA CALIF. 95051		
					CHK BY: [Signature]	7/1/75	TITLE: SCHEMATIC AC/DC POWER DISTRIBUTION		
					DFT APPD: [Signature]	7/1/75	SIZE: D DEPT: 410 DRAWING NO.: 2000497		
					ENGR APPD: [Signature]	7/1/75	REV: A1		
					FINISH: ---	AUTH: [Signature]	SHEET 1 OF 1		
					CODE: ---		UPP 1		

8 7 6 5 4 3 2 1

This drawing and specifications, herein, are the property of POWER ONE, INC. and shall not be reproduced or copied or used in whole or in part as the basis for the manufacture or sale of items without written permission.



USED ON: CP123

NOTE: UNREGULATED OUTPUT ARE RATED FOR INTERMITTENT LOADS.

REVISIONS				
ZONE	LTR	DESCRIPTION	DATE	APPROVED
F		REL. REV. 09 WAS 2405, 89	4-4-76	

REF DES	CP123	DESCRIPTION
C1,4,11	220/16	CAPACITOR, ELECT.
C2	9000/16	
C8,6,7	1800/60	
C9	2400/35	ELECT
C3,10	.001/100	CAPACITOR, MYLAR
CR1,7,12,9,10,11	AE1C	DIODE 1A 200V
CR3,4	AE3B	DIODE 3A 100V
CR5	1N753A	DIODE ZENER
SCR1	50303L93	SCR, 5A
C1	2N5055	TRANSISTOR, DARL, NPN
C2	2N2905	TRANSISTOR, PWR NPN
Q3	12500-5	SIGNAL PNP
R3,7,9	530Ω	RESISTOR, 1/2W, 5% CF
R4,6,10,18,20	2.2K	
R8,11,12	47Ω	
R19	220Ω	
R13,16,15	4.7K	1/2W, 5% CF
R11	.56Ω	2W, BWH
R2	.12Ω	RESISTOR, 2W, BWH
R5,17	1.5K	POTENTIOMETER
F1,4,3	1A	FUSE 1A
U1,2	4LA 723	IC VOLTAGE REGULATOR
T1	12202	TRANSFORMER
P.C.B	12201	PRINTED CIRCUIT BOARD
CHASSIS	12347	CHASSIS

QTY REQD	CODE IDENT	PART OR IDENTIFYING NO.	NOMENCLATURE OR DESCRIPTION
PARTS LIST			
TOLERANCE .XX = .030 .XXX = .010		CONTRACT NO.	
FINISH:		APPROVALS	DATE
MATERIAL		DRAWN STOKES	4-13-76
FINISH		CHECKED	
		DRAWN BY	
		APPROVED	9/11/76
NEXT ASSY		USED ON	
APPLICATION		DO NOT SCALE DRAWING	
		POWER ONE, INC. 531 DAWSON DRIVE CAMARILLO, CALIF. 93010 (805)484-2806	
		SCHEMATIC CP123	
SIZE	CODE IDENT NO.	DRAWING NO.	
C	54407	12205 F	
SCALE	UPP		SHEET CF



INTEL CORPORATION, 3065 Bowers Avenue, Santa Clara, California 95051 • (408) 987-8080

Printed in U.S.A. H524/579/20K NCG